

Can solar panels be plugged into an inverter?

Solar panels can be plugged directly into an inverter input. In a grid tied system, the solar panels and inverter do not need a battery because power can be transmitted and sent to the grid. Connecting solar panels to an inverter is very easy. There might be some extra steps needed depending on the solar power kit, so check yours for more details.

How to install a solar inverter?

Use the wiring diagram from the manufacturer. This will help your solar system perform well and work safely. After setting up the solar panels, connect them to the inverter. The inverter turns the panels' DC power into AC power for your home. It's important to follow the inverter's install guide closely for a safe and reliable setup.

What is the purpose of connecting solar panels to an inverter?

The main purpose of connecting solar panels to an inverter is to convert the direct current (DC) electricity produced by the solar panels into alternating current (AC) electricity that can be used to power household appliances and be fed into the electrical grid.

Do I need a solar inverter?

The primary role of an inverter is to convert the DC voltage generated by the solar panels and batteries into AC power for home appliances. There are primarily two scenarios where an inverter is necessary. Where you are using a hybrid system. This is where you use solar panels in a hybrid solution for your home.

How do you connect a solar inverter to a grid?

Here are the steps to connect the inverter to the grid: Connect the solar panels to the inverter using the appropriate cables. Connect the inverter to the grid using the appropriate cables. Make sure the inverter is turned off before connecting the cables. Connect the AC output of the inverter to your home or business electrical panel.

How do you connect a solar inverter to a battery?

After connecting the solar panels to the inverter, you need to connect the inverter to the battery or grid. If

# CAN WE CONNECT SOLAR PANEL DIRECTLY TO INVERTER



you're using a battery,connect the inverter to the battery terminals. If you're connecting to the grid,connect the inverter to the electrical panel using a dedicated circuit breaker.



Connecting Solar Panels to the Solar Charge Controller: The first step involves linking the solar panels to the solar charge controller using the cables that come with your solar installation kit. In this set-up, the positive terminal is connected to the positive terminal and likewise for the negative terminal.



In this blog, we will learn how to use a solar panel to power a fan and understand its operation. Can I Run A Fan Directly From the Solar Panel? Yes, you can run a fan directly from the solar panel, but if you intend to use an AC-powered fan, you must incorporate a solar inverter. Solar panels generate DC energy, which isn't compatible with

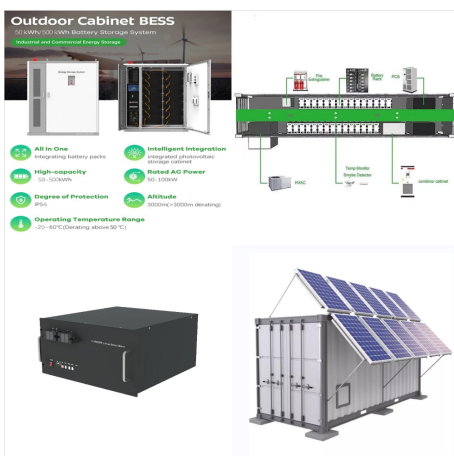


Can you connect a solar panel directly to an inverter? Theoretically, you can connect a solar panel directly to an inverter, but in most cases, the tight input tolerances of an inverter will not allow this connection arrangement. The voltage generated by any solar panel is not always the same as the panel's rated output voltage.

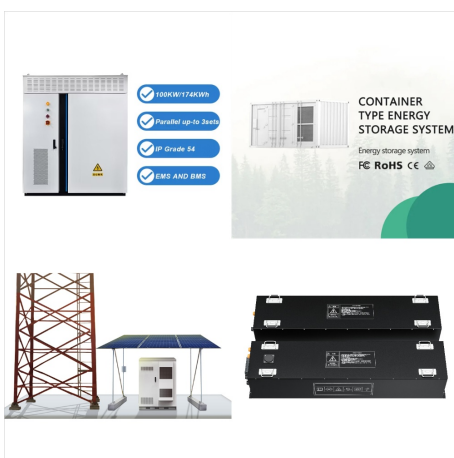
# CAN WE CONNECT SOLAR PANEL DIRECTLY TO INVERTER



Can I Connect Solar Panel Directly to the Inverter?  
Solar panels and inverters are two key components in a photovoltaic (PV) system. Solar panels convert sunlight into direct current (DC) electricity, while inverters convert DC electricity into alternating current (AC), which is the type of electricity used in homes and businesses.



1 hour ago? Link the Inverter to the Load: Attach the inverter output directly to the electrical load or grid connection. Use appropriate wiring to handle the expected current. Turn On the Inverter: Power on the inverter after confirming all connections are solid. This should initiate the ???

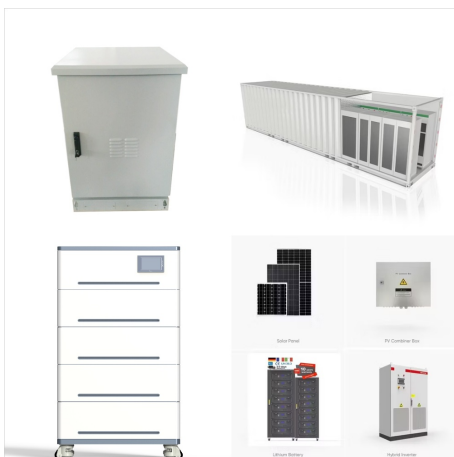


By following proper connection procedures and safety precautions, you can ensure a safe and efficient solar power system. Here at SolarClue(R), we offer a smart, practical, and "beautiful" solution. What happens if I connect solar panels directly to an inverter? It can damage the inverter and panels due to unregulated voltage and current

# CAN WE CONNECT SOLAR PANEL DIRECTLY TO INVERTER



Can You Connect An Inverter Directly To A Solar Panel? Theoretically, you can connect an inverter directly to a solar panel, but in most cases, the narrow input tolerances of an inverter will not allow for this ???



Here we explain how to power a load directly with a solar panel, why batteries are necessary, and the pros & cons of using a solar panel directly without a battery. Can I Connect a Solar Panel Directly to a Load? The best power output for a single solar panel is defined by several aspects, like the solar panel efficiency, the technology used



Types of Inverters. There are several types of inverters that might be installed as part of a solar system. In a large-scale utility plant or mid-scale community solar project, every solar panel might be attached to a single central inverter. String inverters connect a set of panels???a string???to one inverter. That inverter converts the power produced by the entire string to AC.



# CAN WE CONNECT SOLAR PANEL DIRECTLY TO INVERTER



## Can I Connect Solar Panel Directly to the Battery?

After going through the last question you know if you can run solar panels without an inverter, now you must also want to know can I connect a solar panel directly to the battery. Although it is possible to connect a solar panel directly to the battery, it is generally not recommended.



While it is technically possible to directly connect an inverter to a solar panel, this method is not recommended and can damage the inverter. Solar panels can produce varying voltages based on sunlight exposure, which may lead to instability if directly connected to an inverter without any regulatory mechanism.



The main purpose of connecting solar panels to an inverter is to convert the direct current (DC) electricity produced by the solar panels into alternating current (AC) electricity that can be ???

# CAN WE CONNECT SOLAR PANEL DIRECTLY TO INVERTER



Learning how to connect a solar panel to an inverter is essential in maximizing the efficiency of your solar energy system. In this tutorial, I will provide a step-by-step guide on connecting the inverter to the solar panel, explaining the reasons behind the connection and discussing the different types of solar panel inverters available. By following these instructions, ???



As a rule of thumb, you can connect your solar panels directly to a battery if the output voltage ( $V_{mp}$ ) doesn't exceed 35% of the rated battery voltage. That's 16V max. for a 12V battery . If the solar panel  $V_{mp}$  is too high (overvoltage), this ???



Many people wonder whether it's possible to connect an inverter directly to a solar panel. In this article, we will explore the feasibility and implications of connecting an inverter directly to a solar panel. If you're curious about this topic and want to learn more, keep reading! 1. Understanding Inverters and Solar Panels

# CAN WE CONNECT SOLAR PANEL DIRECTLY TO INVERTER



When installing the solar inverter, ensure easy access to the power supply shut-off so that it can be easily turned off in case of emergencies or maintenance. Additionally, mount the inverter out of reach of children to prevent accidental tampering or contact with live electrical components. 3. Regularly monitor the inverter



That's why we have decided to look at some of the most common questions related to solar inverters. Many newcomers to solar energy are even unsure of what an inverter is and may have questions such as: Can You Connect An Inverter Directly To A Solar Panel? In theory, you can indeed connect an inverter directly to a solar panel, but



Step-by-Step Guide to Connecting Solar Panels to an Inverter 1. Install the Solar Panels. First, you need to mount the solar panels in a location that gets plenty of sunlight. If you're installing them on your roof, follow these steps: Positioning: Place the panels where they will receive the most sunlight, usually a south-facing roof.

# CAN WE CONNECT SOLAR PANEL DIRECTLY TO INVERTER



The usual supports for solar panels are brackets for sloped roofs, and mount rails for flat roofs. These solar panel mounts can be easily bought from solar stores or home improvement stores. When installing these supports, you should make sure that they are secured to your house's rafters or trusses. This will make it firmer and safer.



You can run a fan directly from a solar panel. However, if you use an AC-powered fan with a solar panel, you need to add a solar inverter. This is because solar panels produce DC energy incompatible with AC-powered appliances. In addition, the inverter would invert the DC waves to AC waves, making it safer to connect the fan to a solar panel.



In addition, the DC load can be directly connected to the charge controller (only DC load terminals).  
Related Post: [How to Design and Install a Solar PV System? With Solved Example](#); The following solar panel wiring diagram shows that an 120W, 12V solar panel is directly connected to the 12V charge controller.



# CAN WE CONNECT SOLAR PANEL DIRECTLY TO INVERTER



It is possible to connect solar panels directly to the inverter without using a charge controller. There are different types of solar panel inverters available (string inverters, "By connecting solar panels to an inverter, we can efficiently harness the power of the sun and seamlessly integrate renewable energy into our daily lives."



Connecting the solar panels directly to the battery could overcharge and damage the battery. What Happens if You Connect Solar Panels Directly to a Battery? When sunlight hits the cells on a solar panel, it produces a chemical reaction and generates direct current (DC). The solar panel transmits this current into the battery.



You can connect a solar panel directly to an inverter and run your appliances. Solar panels can be plugged directly into an inverter input. In a grid tied system, the solar panels and inverter do ???

# CAN WE CONNECT SOLAR PANEL DIRECTLY TO INVERTER



We may earn commissions for purchases made through links on our site. Final Thoughts on Can you Connect a Solar Panel directly to an Inverter. There will be different setups for different electrical power purposes, many of which will not need to be tracked with equipment. However, these systems must be checked regularly to prevent any



Connecting Appliances Directly to Solar Panels. In theory, it is possible to connect electrical appliances directly to solar panels without using an inverter. However, this method is not recommended for several reasons. Firstly, most electrical appliances run on AC power, which means they require a stable supply of alternating current.

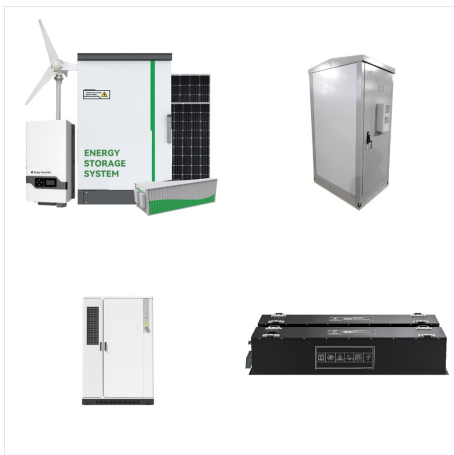


Step 2: Connecting the Solar Panels We opted for a series connection to increase the system's voltage. By connecting the positive terminal of one panel to the negative terminal of the next, we ensured the total voltage was the sum of the individual panel voltages. Expert Insights From Our Solar Panel Installers About How to Connect Solar

# CAN WE CONNECT SOLAR PANEL DIRECTLY TO INVERTER



The first part is the power optimizer, which handles DC to DC and optimizes or conditions the solar panel's power. There is one power optimizer per solar panel, and they keep the flow of energy equal. For example, with a standard string inverter, if one solar panel produces less energy, all the solar panels in that string will produce less energy.



How to Connect Solar Panels to an Inverter. Finally, the solar power inverter is connected to the solar battery in an off-grid system. For grid-tied solar panels, large inverters or even small micro inverters may be connected directly after the charge controllers, in lieu of a storage battery onsite.



To connect a solar panel to an inverter, you need to use a solar charge controller to regulate the flow of energy from the panel to the inverter. code requirements and following manufacturer guidelines for connection is imperative to a successful and safe solar energy system. Now that we have laid the groundwork by understanding the basics