

Should you leave a lithium-ion battery plugged in all the time?

Leaving a lithium-ion battery plugged in all the time is not recommended for several reasons: Heat Accumulation: Continuous charging can lead to heat buildup, one of the main factors that degrade battery health over time.

Can a lithium ion battery be left on a charger?

Factors involved include the kind of lithium ion battery to be charged, the type of charger to be used, and ambient temperature. Some battery experts say that it is not OK to leave a lithium-ion battery on the charger, because it may give the cell a certain amount of strain.

Should you charge a lithium ion battery all the way up?

When your battery is discharging, Battery University recommends that you only let it reach 50 percent before topping it up again. While you're charging it back up, you should also avoid pushing a lithium-ion battery all the way to 100 percent. If you do fill your battery all the way up, don't leave the device plugged in.

Can you leave a Li-ion battery on a charger?

Leaving Li-ion batteries on chargers for extended periods should not cause any harm to the battery itself. However, it's important to note that leaving any type of battery continuously connected to a charger may still consume small amounts of energy over time. This can lead to increased electricity costs and also contribute to unnecessary waste.

Can you leave a battery on a charger?

While it may be tempting to leave batteries on chargers, doing so can have detrimental effects on their performance and overall lifespan. Leaving batteries on chargers for extended periods of time can lead to overcharging, which can cause overheating and potential damage to the battery cells.

Can you drain a lithium battery quickly?

Some products, like power tools, are designed to drain batteries quickly, but being gentle on the battery can still extend its lifespan. Using larger capacity batteries can reduce the drain rate, and periodically checking on unused batteries is advised. What is the impact of depth of charge on lithium batteries?

CAN YOU LEAVE LITHIUM BATTERIES PLUGGED IN



Lithium batteries are designed to protect them from getting damaged, so try not to worry too much. Thanks for submitting a tip for review! This article was co-authored by Ken Colburn and by wikiHow staff writer, Danielle Blinka, MA, MPA. Ken Colburn is a Consumer Electronics Expert and the Founder & CEO of Data Doctors Computer Services.



It's a frustrating experience that can leave you feeling helpless. As a driver, I always want to be prepared for any situation on the road. Lithium-ion batteries can experience thermal runaway. This leads to overheating and can be hazardous. While charging times vary, don't leave your jump starter plugged in for too long



Determining whether you should leave your boat battery charger plugged in all winter depends on several factors: the type of charger you have, local weather conditions, access to reliable power sources, and personal preferences regarding convenience versus potential risks.

CAN YOU LEAVE LITHIUM BATTERIES PLUGGED IN



They need to be charged and discharged regularly to maintain their health. When you leave your laptop plugged in all the time, you're keeping the battery at 100% charge, which can cause it to degrade faster. Over time, this can lead to a shorter battery life and the need to replace the battery sooner than you would if you used it normally.



Lithium-ion batteries are expensive. You want to do all you can to extend the life of the fuel that powers your cordless tools. Of the top 5 killers, we have the most control over heat, but having good charging habits also helps considerably. Combined, all these tips should help add life to your battery packs. Lithium-ion Battery Maintenance



You are plugged into a 7-Pin receptacle on your tow vehicle. If your RV has a 7-pin connection to your tow vehicle, that means that one of the pins provides charging power for your RV house battery. This awesome feature helps recharge your house batteries on trips, so you have full batteries when you arrive. However, it can also cause a headache.

CAN YOU LEAVE LITHIUM BATTERIES PLUGGED IN



Can I Leave my Dyson plugged in all the time?
Dyson upright vacuum cleaners (V6, V7, V8, V10, and V11) are designed so that you can store the unit on the charger and keep it plugged in all the time. Storing the Dyson vacuum on the charger will not harm the battery. It is also not necessary to use the unit until the battery is depleted.



In theory, you can leave the Battery Tender(R) Plus battery charger connected to a battery forever. That's a really long time. Sales people like to say, "Just plug it in and forget about it!" However, practically speaking, it is a good idea to check on the battery at least once every couple of weeks. Strange things can happen.



By following these steps, you can ensure that your batteries are in optimal condition for winter storage. In the next section, we will discuss the importance of disconnecting and removing batteries from devices before storing them. Store lithium batteries for the winter in a cool, dry place at around 50% charge.

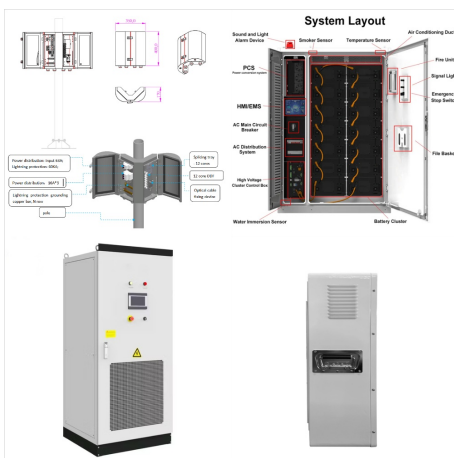
CAN YOU LEAVE LITHIUM BATTERIES PLUGGED IN



Store your batteries at a cool temperature below 75 °F (24 °C). Heat can damage and drain lithium batteries, so pick a storage location that has a stable, cool temperature. Keep them inside your home in a cool room that's steadily room temperature.



Should you leave a lithium battery on charge all the time? Leaving a lithium-ion battery plugged in all the time is not recommended for several reasons: Heat Accumulation : Continuous ???



Understanding the Impact of Continuous Charging. Keeping your Jackery power station plugged in constantly can have several adverse effects on its battery life. Batteries, particularly lithium-ion types commonly used in portable power stations, are designed with a finite number of charge cycles. Each time you charge the battery, it uses up part of its overall lifespan.

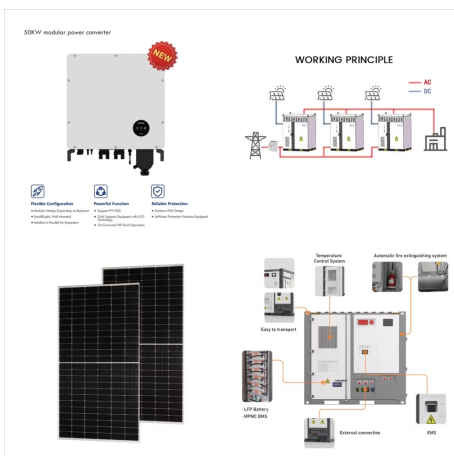
CAN YOU LEAVE LITHIUM BATTERIES PLUGGED IN



In contrast to lead-acid batteries, lithium-ion batteries are less impacted by cold weather and will not freeze under most conditions. In fact, Battle Born LiFePO4 Batteries won't experience any negative operating effects until conditions reach subzero temperatures. Can You Leave Marine Batteries on Your Boat in Freezing Temperatures? Although the ability to leave ???



Actually, now that you have a lithium battery, winter storage is easier than you might think. While standard lead-acid (flooded lead acid, or FLA for short) batteries self-discharge fairly rapidly, sometimes as much as 10% to 20% per month, the modern crop of lithium iron phosphate (lithium for short) batteries tend to self-discharge around 1%



Unlike lithium-ion batteries, which should not be overcharged, lead-acid batteries can handle a float charge without adverse effects. Convenience: Leaving your golf cart plugged in all the time can be convenient. You won't need to worry about whether the battery is charged before your next round of golf. Factors to Consider:

CAN YOU LEAVE LITHIUM BATTERIES PLUGGED IN



1. Dimension. Shark Cordless Vacuum Cleaner has a small body with dimensions of about 10.24" in width and 51.18" in height. So one can easily make space for the vacuum cleaner to store, which is not the case with the traditional vacuum cleaner as ???



When you bring your cart out to use again, we suggest charging the battery before driving so that you start with a full charge. BigBattery can help you learn more about lithium-ion golf cart batteries and how to properly care for and maintain your equipment. We have a wide selection of parts, services, and many helpful blogs like this one to

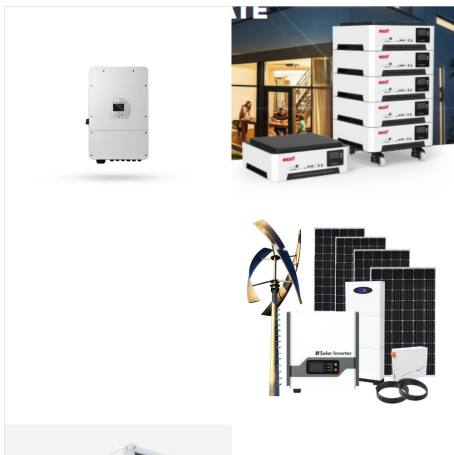


With older phones, if you leave you phone plugged in overnight, it is going to use a bit of energy by constantly trickling new juice to the battery every time it falls to 99%. That is eating into

CAN YOU LEAVE LITHIUM BATTERIES PLUGGED IN



1. Battery Maintenance. Lead-Acid Batteries: If your RV has lead-acid batteries, leaving them plugged in is generally a good idea, especially if you have a battery maintenance mode or a smart charger that can maintain a proper charge without overcharging. Lead-acid batteries can self-discharge, and a maintained charge helps prevent them from freezing.



Additionally, by keeping your RV plugged in you can keep your batteries topped off so that they are ready to go as soon as you are ready to take your RV out on the road again. You can also keep your fridge on during the winter when you keep your RV plugged in. This is beneficial because you likely will have leftover food that you would need to



??? If you won't be using a lithium-ion battery for an extended period (e.g., several months), store it at around 40% charge level. By following these guidelines and taking proper care of your lithium-ion battery, you can ensure that it continues to ???

CAN YOU LEAVE LITHIUM BATTERIES PLUGGED IN



Moreover, leaving the battery on the charger for prolonged periods can also increase the risk of overcharging, which can lead to safety concerns such as the potential for fire or battery leakage. It is important to note that the specific impact may vary depending on the type of battery and charger used, as well as the duration of overcharging.



You absolutely can leave DeWalt batteries on the charger even after they are fully charged; in fact, the company recommends it. DeWalt battery charges come equipped with a maintenance mode which allows fully charged batteries to safely remain fully charged in the charger until they are ready to be used.



Be sure to leave the cordless tool's battery plugged in until it's completely charged. Most chargers have an indicator to let you know when the battery is fully charged. Properly Store Batteries. Some manufacturers suggest 30%-50% charge for lithium-ion batteries. But it's best to store most rechargeable batteries at about 40%-50% charge.

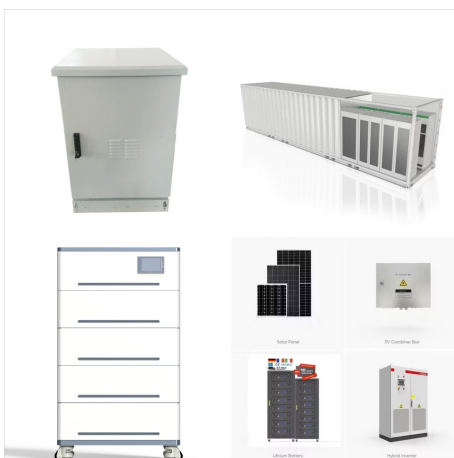
CAN YOU LEAVE LITHIUM BATTERIES PLUGGED IN



The question of whether it is safe to leave a drill battery plugged in at all times is one that is frequently debated, and it is essential to understand the potential risks and benefits associated with this practice. (Ni-MH), or lithium-ion (Li-ion) technology. It is important to know the differences between these types of batteries, as



Lead-acid batteries" conditions and charging methods must be much more precise to avoid damage than a typical lithium battery. Lithium batteries can withstand intense cold and heat much better than lead-acid batteries. A lithium battery can capably charge without possible damage in any temperature between 0-130 degrees Fahrenheit.



Properly maintaining and caring for your lithium-ion batteries can mitigate the effects of battery aging. By implementing storage guidelines, charging practices, and avoiding excessive ???

CAN YOU LEAVE LITHIUM BATTERIES PLUGGED IN



A fully charged battery can keep from freezing in extreme temperatures, more so than a partially charged one. Disconnect the coach from the battery and you are good to leave the lithium RV batteries where they sit. Just make sure that you never charge your lithium battery below 32 degrees Fahrenheit so they do not get damaged.



If you have battery switch for the cranking battery it should off during charging to prevent current in the outboards electronics. Up plug the trolling motor when not using the boat for weeks at a time. Check all the rocker or toggle switches including storage locker lights etc making sure they are off.



In order to extend the lifespan of your Ryobi battery, you should pay attention to how you charge it. How Lithium-Ion Batteries Work. When a Lithium-Ion battery is being charged, the lithium ions move between the cathode to the anode through an electrolyte solution contained in a battery cell. When a battery is discharged, this happens in reverse.

CAN YOU LEAVE LITHIUM BATTERIES PLUGGED IN



In order to extend the lifespan of your Ryobi battery, you should pay attention to how you charge it. How Lithium-Ion Batteries Work. When a Lithium-Ion battery is being charged, the lithium ions move between the ???



Leaving lithium batteries on the charger can generate excessive heat, especially if the charger is not designed to handle the battery's specific charging requirements. This can lead to thermal runaway, a dangerous situation that can cause fires or explosions. Battery Age and ???