

How do I wire a backup camera?

The wire that shows active power when the vehicle is in reverse gear is the reverse light wire. Once you have found the reverse light wire, you can then proceed with wiring your backup camera. Make sure to secure all connections and use appropriate wiring connectors to ensure a reliable connection.

Can a backup camera be wired to a brake taillight?

I stead of wiring the camera to the reverse tail light...can I wire it to the brake taillight so that it can be on all the time?? You can wire a backup camera,like the Rear View Safety Backup Camera System #RVS-770614,to a different function so that it stays on all of the time.

How do I wire a backup camera to a reverse light?

Here are the key tools and materials you will need for wiring a backup camera to the reverse light: 1. Multimeter: A multimeter is an important tool for diagnosing electrical problems and testing the voltage of the reverse light to determine the appropriate connection point for the camera.

How does a backup camera work?

Wiring the backup camera to the reverse light ensures that the camera is activated when the vehicle is put into reverse gear. This means that whenever you shift your car into reverse, the camera will automatically turn on, providing a clear view of the area behind your vehicle on the display screen.

How do I install a backup camera in my car?

If you want to install a backup camera in your vehicle,one of the easiest ways to power it is by wiring it to the reverse light. This allows the camera to turn on automatically whenever you put your vehicle in reverse,providing you with a clear view of what's behind you.

Are tail lights a backup camera?

Reverse Lighting Your tail lights are a very convenient source of backup camera power,and not just because they're already in the rear of your vehicle (where the camera will be installed). They also already receive an

# CAN YOU TAP REAR BACKUP CAMERA POWER FROM BRAKE LIGHTS



electrical signal that turns them on when you put your vehicle into reverse.



No mounting required, it just snaps right in. You fish the wire in behind the license plate mount. Then up through the grommet the tail light wires go through. Under the trim all the way to the front and plug into your head unit. The power wires tap into the reverse light circuit at the light. I'm very happy with it. For \$17, you really can't



???Excellent Performance for Reversing??? Red LED Brake Tail Light with rear view camera offers you clear day and night vision for your vehicle back up, perfect 150° viewing angle features a true dimension of the site to avoid blind spots make parking safer and simpler. CCD sensors can provide you with realistic and natural color image.



The Mercedes Sprinter Third Brake Light Backup Camera is complete with a 150° deg; backup camera using a MT9V139 lens with night vision and all the wires, connectors and mounts you will need. The Third Brake Light is completely waterproof with an IP68 rating, strong and reliable, shock resistant with a 10G vibration rating (highest in the industry) and comes with a full year ???

# CAN YOU TAP REAR BACKUP CAMERA POWER FROM BRAKE LIGHTS



Many truck owners are surprised to learn that you can retrofit a backup camera if your pickup is missing one from the factory. license plate mounts while closing the distance between a third brake light mount and the rear of your pickup. is to tap into either a cigarette lighter (if equipped) or a 12V power outlet using a T-tap or tap

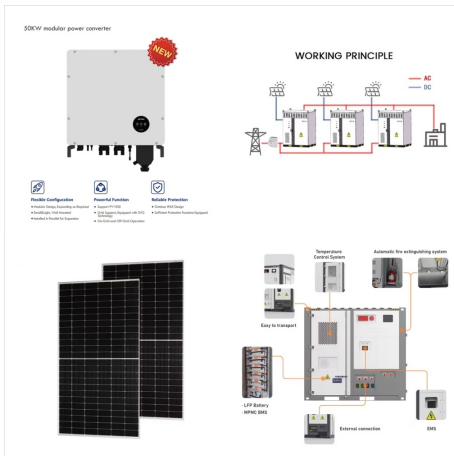


Single backup light works great! My solution is a single light which mounts in the center of the spare (and is easily removed if I ever need the spare). It is 37.5W halogen, Hella Optilux 88708 for \$20. It is wired with a relay from ???



???Excellent Waterproof???The brake light camera designed with fully sealed glue filling craft, with International Standard IP69 Waterproof Property. And it is built in guidelines ON/OFF switch. ???Fits and Looks Like Factory???This Third Brake Light Backup Camera is an aftermarket 3rd light and camera, not OEM.

# CAN YOU TAP REAR BACKUP CAMERA POWER FROM BRAKE LIGHTS



If you want to install a backup camera in your vehicle, one of the easiest ways to power it is by wiring it to the reverse light. This allows the camera to turn on automatically whenever you put your vehicle in reverse, providing you with a ???



Best way to tap into rear backup lights. was to just tap into the back up light wiring under the rear bumper. Better said, right before the plug for the back up lamp. I tapped into the wires just before the plug, and soldered my taps on, then covered with heat shrink tubing. I ran the tap wires (power for the camera and monitor) up behind



The Nissan NV Third Brake Light camera is complete with a 130° deg; Angle backup camera using a MT9V139 sensor with night vision and all the wires, connectors and mounts you will need. The Third Brake Light is completely weatherproof with a IP68 rating, strong and reliable, shock resistant with a 10G vibration rating (highest in the industry) and comes with a full year ???

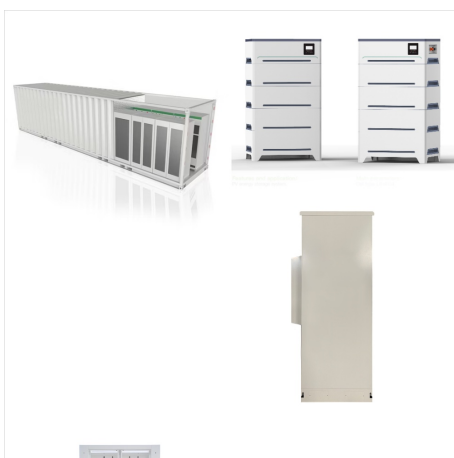
# CAN YOU TAP REAR BACKUP CAMERA POWER FROM BRAKE LIGHTS



To successfully install a backup camera, you will need a few tools and materials. These items will help you properly wire the camera and ensure a secure installation. Here are the essential tools and materials you will need: 1. Backup Camera. The first and most important item you will need is a backup camera.



To successfully install a rear-view camera, first remove your vehicle's rear license plate and interior trunk panel. Using a power drill, punch a small hole through the exposed license plate mounting area and run your camera's power and video cord through it. Attach a bare wire power cable to your camera's power connector, then strip your car's reverse light wires and ???



Pin #8 in block X10 for the reverse trigger signal and then uses either Constant, Accessory or Ignition accordingly for power depending on when you want the camera to be powered. Usually Ignition. View attachment 1 And here are some install instructions that you can adapt to your particular camera.

# CAN YOU TAP REAR BACKUP CAMERA POWER FROM BRAKE LIGHTS



Next, you need to supply a signal to the rearview camera. This can be done by tapping into your reverse lights. You simply disassemble your taillight assembly and locate the wires that run to your reverse light. Grab a friend and ???



Brake light, led light for the camera, and the camera itself. The camera is great, head and shoulders above the cheapo Amazon cameras I've been using. The unit looks great on the back of the truck, I know folks have been balking at the cost, I found a great deal on Amazon for it, but if you look at the options out there, there's really not one



3rd Brake Light Backup Camera Systems. Cameras to replace the 3rd brake light; Factory Screen Integration . Audi, BMW, Toyota, Mazda, etc. GPS with Backup Camera Systems. We can help you get around; Backup Monitors. On Dash, On Mirror, Visor Mount; Backup Cameras. Portable, Bumper, License, Hitch, Bird's Eye; Backup Kits Parts & Accessories

# CAN YOU TAP REAR BACKUP CAMERA POWER FROM BRAKE LIGHTS



Amazon : EWAY 3rd Third Brake Light Backup  
Camera for Mercedes Benz Sprinter Volkswagen  
VW Crafter Vans 2007-2019 Roof Mount Reversing  
Camera for Top Rear Brake Light 8 IR Light Night  
Vision Rearview Camera : Electronics

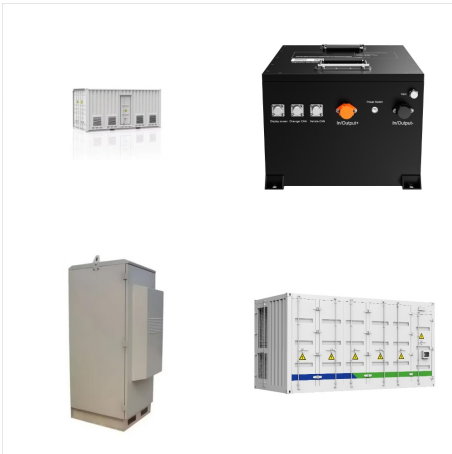


This Jason Cap Third Brake Light&nbsp; is  
complete with a 130& deg; MT9V139 sensor and a  
&nbsp; rear backup camera with 6 infra-red  
illuminators for night vision and all the wires,  
connectors and mounts you will need. The Third  
Brake Light is completely weatherproof with a IP68  
rating, strong and reliable, shock resistant with a  
10G vibration rating (highest in the ???)

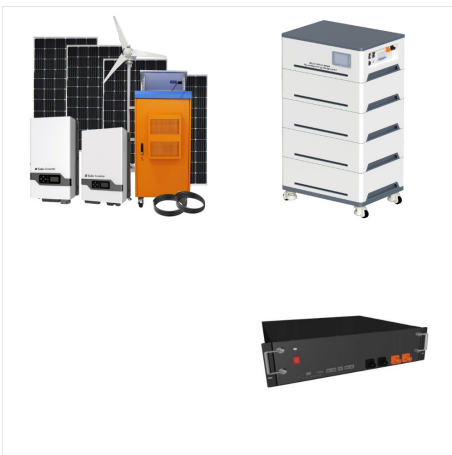


Buy EWAY 3rd Third Brake Light Cargo Backup  
Camera for Ford F150 2015-2020, F250 F350 F450  
F550 2017 up, Ranger 2019 up, Maverick 2022 up,  
LED High Mount Stop Lamp Rear View Reverse  
Hitch Camera RCA Input: Vehicle Backup Cameras  
- Amazon FREE DELIVERY possible on eligible  
purchases ???Excellent Performance???The truck  
rear tail high

# CAN YOU TAP REAR BACKUP CAMERA POWER FROM BRAKE LIGHTS



Our shop specializes the most types of 3rd brake light cameras, we offer more than 20 kinds vehicle specific third brake light backup cameras. Shop With The Most Types Of Third Brake Light Cameras. FAQ; Glossary; Shipping; Blog; About Us; Third Brake Light Camera For Fiat Ducato / Peugeot Boxer and Citroen Jumper. \$139 \$129. Third Brake



The universal third brake light camera mounts onto any flat surface of RV, bus and cargo van. Our universal brake light backup camera system uses top CCD image sensor with 600 TV lines to produce the highest quality of video image possible. CCD lenses are superior to cheaper CMOS lenses. They deliver crisper images and a much better color balance.



\* Brake Light Wire (for Alpine HCE-TCAM1-WRA cameras so I can remove the factory 3rd brake light which impairs rear visibility) \* Non-Switched battery power (for dashcam to monitor when parked). I know I can run wire to battery, but most likely looking to tap into the same place as the other two Brake and Reverse signals.

# CAN YOU TAP REAR BACKUP CAMERA POWER FROM BRAKE LIGHTS



Instead of using the lockpick's power and ground, try connecting the camera directly to another power and ground (preferably the radio) and see if the picture comes up on the screen when in reverse. If so I can help you wire the system so that you can have both a backup camera and a camera for any use.



Running it to the brake light function is probably not the best solution as that means it will only receive power when you are braking. You can use a circuit tester like part # PTW2992 to help you determine which wires are for which functions on your vehicle.



100% Waterproof Camera. The backup camera is built with IP68 rating, which means it is 100% waterproof. With Built-in Brake Lights. The built-in brake lights will turn on automatically when the camera is working. Specification for this universal third brake light camera: Image sensor :CCD; Resolution :756(H) X 504(V) TV line :600TV lines; TV