



What is a Canadian solar installation manual?

This general manual provides important safety information relating to the installation, maintenance, and handling of Canadian Solar modules. Professional installers must read these guidelines carefully and strictly follow these instructions. Failure to follow these instructions may result in death, injury, or property damage.

What are the installation requirements for a Canadian Solar module?

All the requirements of the standard module installation manual and specific tracker detailed installation instructions should apply. The following tracker manufacturers and types are approved with Canadian Solar modules. The allowable maximum twist angle of the module is 0.5 degree.

What is the installation manual for CS-series solar modules?

INSTALLATION MANUAL OF STANDARD SOLAR MODULES This general manual provides important safety information relating to the installation, maintenance and handling of CS-series solar modules. Professional installer must read these guidelines carefully and strictly follow these instructions.

Can Canadian solar modules be mounted on a single axis tracker?

Canadian Solar Inc. modules can be mounted on single-axis trackers using center clamps or mounting holes as described below. All the requirements of the standard module installation manual and specific tracker detailed installation instructions should apply.

Where can I find the latest version of the Canadian Solar manual?

We recommend checking regularly for the most updated version. The information contained in this manual is subject to change by Canadian Solar Inc. without prior notice. Canadian Solar Inc. gives no warranty of any kind whatsoever, either explicitly or implicitly, with respect to the information contained herein.

Which grounding methods are recommended for Canadian Solar Inc standard modules?

One grounding method is recommended for Canadian Solar Inc. standard modules, as described below. For alternative grounding methods, please refer to Annex B (Alternative Grounding Methods) of this installation manual. It may not be possible to use standard grounding methods for certain module ranges. Please refer to Annex B for more details.

CANADIAN SOLAR PANEL INSTALLATION MANUAL



INSTALLATION MANUAL DISCLAIMER The information contained in this manual is subject to change by Canadian Solar Inc. without prior notice. Canadian Solar Inc. gives no warranty of any kind whatsoever, either explicitly or implicitly, with respect to the information contained herein. 1.2 **LIMITATION OF LIABILITY** Canadian Solar Inc. shall not be



Inverter Commissioning Checklist Coming Soon
String Sizing Tool (XLS) Installation Manuals
Installation Manual of CSI-5K-S22003E Inverter
Installation Manual of CSI-7/8/9kW-S22003-E AU
Inverter Warranty Warranty Documents Inverter
Warranty Extension

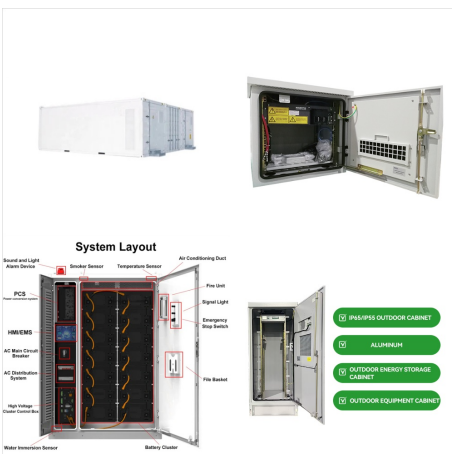


We have 1 CanadianSolar CS6R-MS Series manual available for free PDF download: Installation Manual CanadianSolar CS6R-MS Series Installation Manual (43 pages) Brand: CanadianSolar | Category: Solar panel | Size: 2.14 MB

CANADIAN SOLAR PANEL INSTALLATION MANUAL



Canadian Solar Three phase Inverters covert DC power from the photovoltaic (PV) array into alternating current (AC) power that can satisfy local loads as well as feed the power distribution grid. This manual covers the three phase inverter model listed below: CSI-75K-T400GL02-E, CSI-80K-T400GL02-E, CSI-100K-T500GL02-E, CSI-110K-T540GL02-E



Title:

CanadianSolar-HiKuBlack_CS3N-MS_v2.7_F30_J2

_NA Author: Canadian Solar Inc. Subject:

CS3N-380|385|390|395|400MS 380 W ~ 400 W

Canadian Solar (USA) Inc. is committed to providing high quality solar products, solar system solutions and services to ???



1.1 INSTALLATION MANUAL DISCLAIMER The information contained in this manual is subject to change by Canadian Solar without prior notice. Canadian Solar gives no warranty of any kind whatsoever, either explicitly or implicitly, with respect to the information contained herein.

CANADIAN SOLAR PANEL INSTALLATION MANUAL



This manual describes the installation process and provides a set of guidelines for EP Cube system information. However, Canadian Solar (CSI) and Eternal Planet Ltd (EP) believes in striving for rated circuit breaker or fused disconnect in a service entrance rated panel (UL-67 Listed) is required between Utility Meter and Smart Gateway. 12

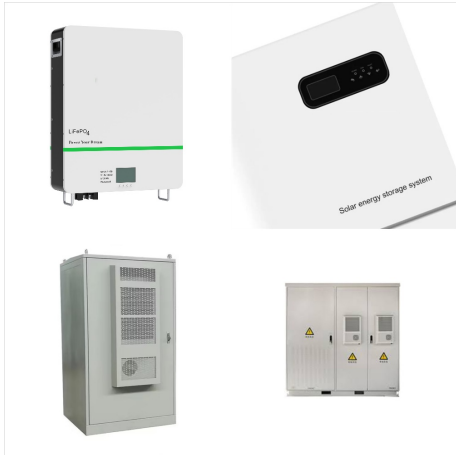


This general manual provides important safety information relating to the installation, maintenance and handling of CS-series solar modules. Professional installer must read these guidelines carefully and strictly follow these instructions. Failure to follow these instructions may result in death, injury or property damage. The installation



inverter installation location. Canadian Solar recommends using a sun shade minimizing direct sunlight when the ambient air temperature around the unit exceeds 104°F/40°C. Exposure to direct sunlight will increase the operational temperature of the inverter and may cause output power limiting. Canadian Solar recommends inverter installed to avoid

CANADIAN SOLAR PANEL INSTALLATION MANUAL



INSTALLATION AND OPERATION MANUAL
VERSION 1.5 CANADIAN SOLAR INC. Global
Headquarters: 545 Speedvale Avenue, West
Guelph, Ontario N1K 1E6, Canada Tel: +1 519 837
1881 Sales Inquiries Email:
sales.ca@canadiansolar Technical Inquiries Email:
service.ca@canadiansolar CANADIAN SOLAR
(USA), INC. North America Headquarters:



Page 14 INSTALLATION MANUAL ANNEX OF
STANDARD SOLAR MODULES For professional
use only Page 15 INSTALLATION MANUAL
DISCLAIMER The information contained in this
manual is subject to change by Canadian Solar Inc.
without prior notice. Canadian Solar Inc. gives no
warranty of any kind whatsoever, either explicitly or
implicitly, with respect to



View and Download CanadianSolar CS6L-MS
installation manual online. PHOTOVOLTAIC
MODULE. CS6L-MS solar panel pdf manual
download. Also for: Cs6r-ms, Cs6ra-ms, Cs6rb-ms,
Cs6r-ms-hl, Cs6w-ms, Cs7l-ms, Cs7l-ms-r,
Cs7n-ms, Cs6w-t, Cs6r-t, Cs6r-h-ag, Cs6ra-h-ag,
6r-mb-hl, Cs6w-mb-ag,

CANADIAN SOLAR PANEL INSTALLATION MANUAL



1.1 INSTALLATION MANUAL DISCLAIMER The information contained in this manual is subject to change by Canadian Solar without prior notice. Canadian Solar gives no warranty of any kind whatsoever, either contained herein. In the event of any inconsistency among different language versions of this document, the English version shall prevail.



View and Download Canadian Solar CS6P-PE installation manual online. Solar module. CS6P-PE solar panel pdf manual download. Also for: Cs6a-pe, Cs5p, Cs5a, Cs5ah, Cs6a, Cs5t, Cs6p, Cs6x, Cs6v, Cs6vh, Cs5c, Cs6h, Cs6e, Cs6d, Cs6c, Cs5e, Cs5h. Solar panel Canadian Solar CS3U-P Installation Manual. Standard solar modules (40 pages) Solar panel



En-Rev Im/Gn-aDm-En/1.1 Copyright february 2018. Canadian solar Inc. 1.0 GEnERal InfoRmatlon 1.1 Installation manual DIscIaimER 1.2 Ilmitation of llaBIlltY 2.0 safEtY PRECautionS 3.0 mECHanICal / EIECtRICal sPECIfICatIons 4.0 unPaCKInG and stoRaGE 5.0 moDuLE Installation 5.1 moDuLE WIRInG 5.2 GRounDInG 6.0 mountInG InstRuCtlons

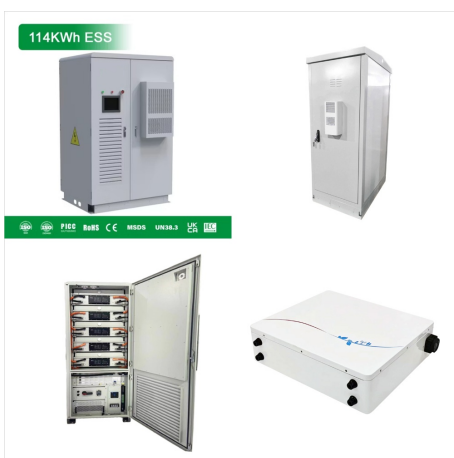
CANADIAN SOLAR PANEL INSTALLATION MANUAL



Page 1 CSI SERIES GRID-TIED PV Inverter
CSI-7KTL1P-GI-FL & CSI-8KTL1P-GI-FL
CSI-9KTL1P-GI-FL & CSI-10KTL1P-GI-FL
INSTALLATION AND OPERATION MANUAL
CANADIAN SOLAR INC. Global Headquarters:
VERSION 1.2 545 Speedvale Avenue, West
Guelph, Ontario N1K 1E6, Canada Tel: +1 519 837
1881 Sales Inquiries Email:
sales.ca@canadiansolar ???

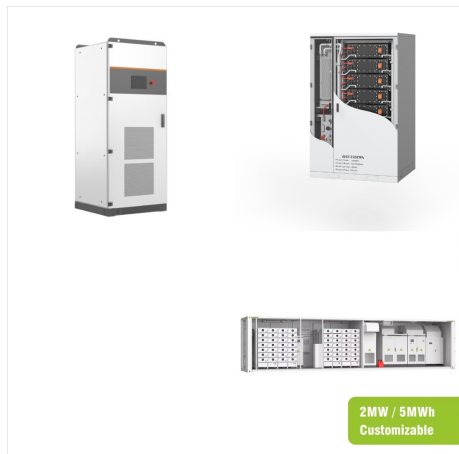


Inverter Commissioning Checklist String Sizing Tool
(XLS) Warranty Inverter Warranty - USA & Canada
Inverter Warranty - Caribbean Installation Manual
Installation Manual of
CSI-75-100K-T480GL02-U-Inverters Installation
Manual of KTL-GS_Series (UL)_50-66 kW
Installation Manual of KTL-GS_Series (UL)_25-40 k

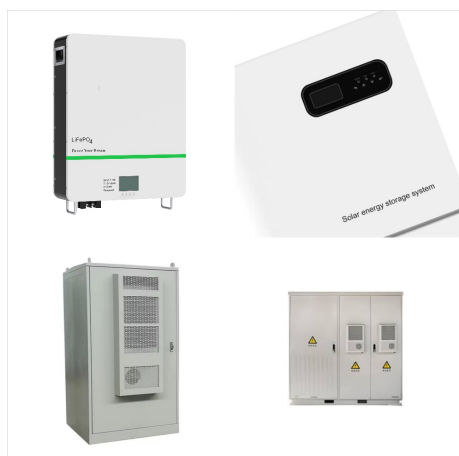


Installation manual Disclaimer The information
contained in this manual is subject to change by
Canadian Solar Inc. without prior notice. Canadian
Solar Inc. gives no warranty of any kind whatsoever,
either explicitly or implicitly, with respect to the
information contained herein. 1.2 Limitation of
Liability

CANADIAN SOLAR PANEL INSTALLATION MANUAL



TENGA EN CUENTA LO SIGUIENTE: Canadian Solar no vende su informaci?n. Revise nuestra Pol?tica de privacidad para acceder a los detalles sobre la informaci?n recopilada y utilizada. Si tiene alguna solicitud espec?fica relacionada con sus datos, utilice los detalles de contacto mencionados en la Pol?tica de privacidad. OK



EP Cube Lite Installation Manual EP CUBE LITE
INSTALLATION The EP Cube can be mounted on a floor or wall with floor mounting brackets provided in the shipment. For wall- mounted installation, an optional mounting kit needs to be ordered. 1. Site Survey CAUTION



INSTALLATION MANUAL DISCLAIMER The information contained in this manual is subject to change by Canadian Solar Inc. without prior notice. Canadian Solar Inc. gives no warranty of any kind whatsoever, either explicitly or implicitly, with respect to the information contained herein. In the event of any inconsistency among different

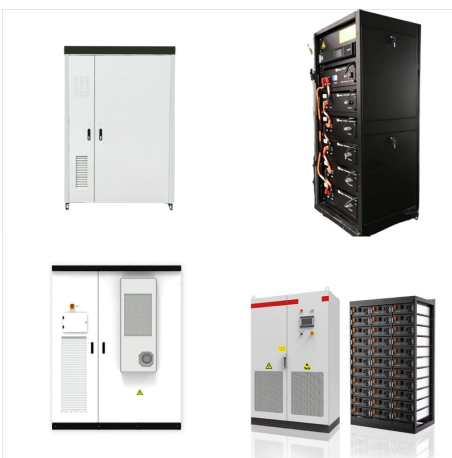
CANADIAN SOLAR PANEL INSTALLATION MANUAL



INSTALLATION MANUAL DISCLAIMER The information contained in this manual is subject to change by Canadian Solar Inc. without prior notice. Canadian Solar Inc. gives no warranty of any kind whatsoever, either explicitly or implicitly, with respect to the information contained herein. This Manual (or document) is written in English with



1.1 INSTALLATION MANUAL DISCLAIMER The information contained in this manual is subject to change by Canadian Solar without prior notice. Canadian Solar gives no warranty of any kind whatsoever, either explicitly or implicitly, with respect to the information contained herein. In the event of any inconsistency among different

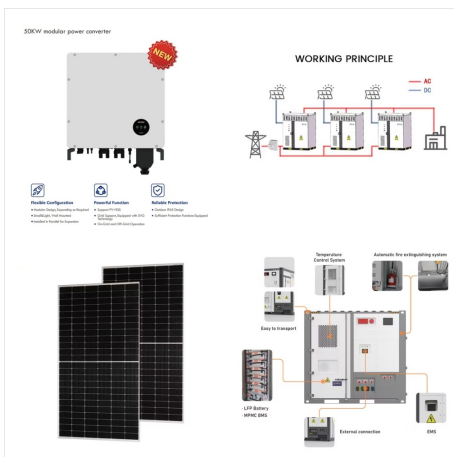


INSTALLATION AND OPERATION MANUAL
VERSION 1.0 (2020.4) 2 4 6 6 6 6 9 9 13 4 2 3 5
11 the solar panel's DC isolator shall be switched on. To stop the inverter, the Grid Supply Main Switch (AC) must be switched off before the solar panel's DC isolator shall be inverter installation location. Canadian Solar recommends using a sun shade

CANADIAN SOLAR PANEL INSTALLATION MANUAL



This installation manual is applicable for EU and EEA countries only. 1.1 INSTALLATION MANUAL
DISCLAIMER The information contained in this manual is subject to change by Canadian Solar Inc. without prior notice. Canadian Solar Inc. gives no warranty of any kind whatsoever, either explicitly or implicitly, with respect to the informa-



Canadian Solar Inc. shall not be held responsible for damages of any kind, including ??? without limitation ??? bodily harm, injury or damage to property, in connection with handling PV modules, system installation, or compliance or non-compliance with the instructions set forth in this manual. 2.0 SAFETY PRECAUTIONS Warning



Page 14 INSTALLATION MANUAL ANNEX OF STANDARD SOLAR MODULES For professional use only Page 15 INSTALLATION MANUAL
DISCLAIMER The information contained in this manual is subject to change by Canadian Solar Inc. without prior notice. Canadian Solar Inc. gives no warranty of any kind whatsoever, either explicitly or implicitly, with respect to

CANADIAN SOLAR PANEL INSTALLATION MANUAL



This installation manual is applicable for EU and EEA countries only. 1.1 INSTALLATION MANUAL
DISCLAIMER The information contained in this manual is subject to change by Canadian Solar Inc. without prior notice. Canadian Solar Inc. gives no warranty of any kind whatsoever, either explicitly or implicitly,