



Hamburg, Germany - Caterpillar Marine, partnering with Caterpillar Innovation & Technology Development Division (ITDD), is in the process of developing a proprietary advanced propulsion system for marine applications. The Cat(R) Marine Advanced Variable Drive (AVD) is a patented system that leverages Caterpillar's extensive experience with heavy duty



Hamburg/Germany Caterpillar Marine Power Systems Falckensteiner Str. 2, 24159 Kiel/Germany
Caterpillar Marine Power Systems 22 Cobham Road Wimborne Dorset BH21 7 PW Caterpillar Marine Power Systems 100 NE Adams St. AC6131 Peoria, IL 61629/USA ASIAPACIFIC Caterpillar Marine Trading (Shanghai) Co., Ltd.



Caterpillar Marine Power Systems (CMPS)
Caterpillar Marine Power Systems (CMPS) is a division of Caterpillar Inc., a renowned global leader in heavy maritime directory. Companies; Hamburg Germany. Neumuehlen 9 Hamburg-22763 Germany. Maritime News. Liberia-flagged Tanker Struck off Yemen.

CATERPILLAR MARINE POWER SYSTEMS HAMBURG



CAT_Marine_Power_Selection_Guide_Ums dd 4-6
08.05.18 10:54. 3 Caterpillar Marine is headquartered in Hamburg, Germany and part of Caterpillar Inc., headquartered in Peoria, Illinois, United States Our mission is to offer advanced marine power solution systems.



Engine uptime is critical for you, your crew, your clients and your bottom line. That's why Cat and MaK propulsion engines power your vessel to any port. The industry's largest range of engines provide the reliability you need. Caterpillar Marine Power Systems ensure that you have an engine on board that will work as hard as you do. Select from our wide range of Commercial ???



Neum?hlen 9 22763 Hamburg/Germany Tel: (713) 895-1449 Email: cat_power@cat Website:
Managing Director: Nigel Parkinso . MN 100:
Caterpillar Marine. Posted by Nicole Ventimiglia.
Caterpillar Marine Power Systems has one simple objective: to surpass customer expectations by providing outstanding sales and service



Die Motorverfügbarkeit spielt eine wesentliche Rolle für Sie, Ihre Besatzung, Ihre Kunden und Ihre Gewinne. Daher können Antriebssysteme von Cat und MaK Ihr Schiff in jeden Hafen bringen. Die breiteste Modellpalette der Branche bietet die Zuverlässigkeit, die Sie benötigen. Mit Caterpillar Marine ist dafür gesorgt, dass Ihr Schiffsmotor so ausdauernd arbeitet wie Sie.



Zeppelin Power Systems is the official partner of Caterpillar for Cat and MaK engines and a leading provider of drive, propulsion, traction and energy systems. It is a legal entity of the Zeppelin group with over 7,800 employees and a turnover of over 2.3 bn euros and has been partnering with Caterpillar for more than 60 years.



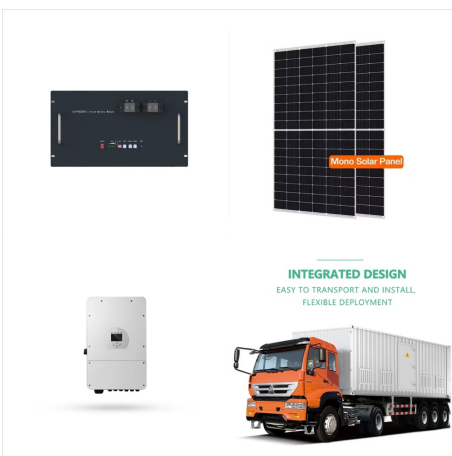
Caterpillar Marine Power Systems
HEADQUARTERS Caterpillar Marine Power
Systems Neumühlen 9 22763 Hamburg/Germany
EUROPE, AFRICA, MIDDLE EAST Caterpillar
Marine Power Systems Neumühlen 9 22763
Hamburg/Germany Caterpillar Marine Power
Systems Falckensteiner Str. 2, 24159 Kiel/Germany
Caterpillar Marine Power Systems 22 Cobham ???



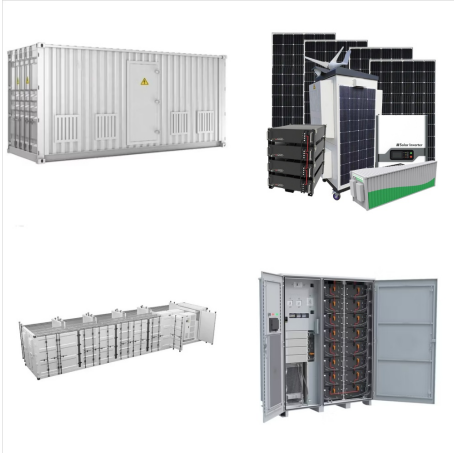
Caterpillar's Germany locations today include manufacturing Dortmund, Lunen, Kiel, Mannheim, and Rostock. Our origins in Germany began more than 180 years ago. Diesel and Dual-Fuel Engines for Marine, Oil & Gas and Power Generation; ???



The portfolio of the Power Systems business unit includes Caterpillar engines of the Cat, MaK, and EMD brands. We are a leading provider of drive, propulsion, traction, and energy solutions for industrial and marine applications, rail vehicles, the oil and gas industry, and power generation. In addition to electricity generators, we also offer



Lafayette, IN - Caterpillar Marine is pleased to announce the first shipment of Cat(R) 3500 series marine gas engines from its Lafayette, Indiana manufacturing facility. Five Cat G3516 marine engines were selected to power the Becker Marine Systems subsidiary, Hybrid Port Energy, LNG-Hybrid Barge, the world's first LNG-powered barge in the Port of Hamburg.



. Kiel, Germany ??? Caterpillar Motoren GmbH & Co. KG announces an expanded portfolio with new integrated services solutions and upgrades supporting emission reductions for medium speed engines (MaK). The company will highlight the latest solutions at the 2022 SMM Exhibition held September 6 ??? 9 in Hamburg, Germany.



Hamburg, Germany - Caterpillar Marine is proud to have successfully supported EPSA in supplying marine power systems for 21 shipsets for the Pacific Patrol Boat Replacement (PPBR) for Austal Limited. PPBR is part of the Commonwealth's Pacific Maritime Security Program to enhance maritime security cooperation across the South Pacific.



Caterpillar Marine Power Systems Report this profile Hamburg, Deutschland View Christian's full profile See who you know in common Get introduced Contact Christian directly Join to view full profile Explore collaborative articles We're unlocking community knowledge in a new way.



O tempo de atividade do motor ? fundamental para voc?, sua equipe, seus clientes e seu lucro final. ? por isso que os motores de propuls?o Cat e MaK potencializam sua embarca??o para qualquer porto. A maior gama de motores do setor oferece a confiabilidade de que voc? precisa. Com o Caterpillar Marine, voc? tem um motor de bordo que acompanha a intensidade do seu ???



Consult Caterpillar Marine Power Systems's entire Brochure - Cat Marine Careers catalogue on NauticExpo. Page: 1/12. Exhibit with us {{>currencyLabel}} Back {{>currenciesTemplate}} English. Hamburg Europe, Africa, Middle East Mossville Engine Center Kiel Engine Center Greenville, SC Center of Excellence Americas Regional Headquarters



Diamonds from Italy ??? Fincantieri uses MaK power plant for four new cruise vessels Hamburg, Germany ??? in March 2006, Italian shipyard Fincantieri ordered a ship set comprising 4x MaK 12 M 43 C and 2x MaK 8 M 43 C marine engines to power the new Caterpillar Marine Power Systems, with headquarters in Hamburg, Germany, brings together all

CATERPILLAR MARINE POWER SYSTEMS HAMBURG



Hamburg, Germany ??? Caterpillar Marine is pleased to announce Cat(R) power solutions have been selected to power four 3100 LM RoPax Ferries for Stena Line. Each ferry will be equipped with two MaK??? 12 M 43 C propulsion engines. "By combining a set of proven technologies Caterpillar's solution will provide Stena Line the most fuel efficient ferries in the world and will set a new ???



Zeppelin Power Systems Marine Portfolio 4 The Zeppelin Group ??? Worldwide Sites 6 With our own workshop at our Hamburg site, we have the added capability in the field of turbo-chargers. Repairs for Cat, Napier, KBB, KKK and The Cat SCR System solution was designed by Caterpillar to meet future IMO III emissions require -



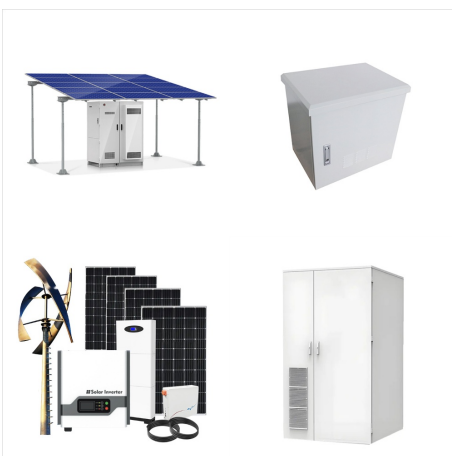
Engine uptime is critical for you, your crew, your clients and your bottom line. That's why Cat propulsion engines power your vessel to any port. The industry's largest range of engines provide the reliability you need. Caterpillar Marine ensure that you have an engine on board that will work as hard as you do. Select from our wide range of Commercial Propulsion Engines, High ???



Efficient power solution can deliver up to \$250,000 in fuel savings for offshore supply vessels. Hamburg, Germany - Caterpillar Marine is pleased to announce the launch of the Mak M 25 E engine platform at the 2014 SMM Exhibition, held September 9 -12 in Hamburg, Germany developed for state-of-the-art vessel designs with an emphasis on fuel savings, the ???



Hamburg, Germany - Caterpillar Marine will unveil new power ratings for the Cat(R) C175 propulsion engine for commercial vessels at the 2014 SMM Exhibition, held September 9 -12 in Hamburg, Germany. Designed specifically as a high speed power solution for commercial applications including ocean going and harbor tugs, the C175-16 propulsion engine is now ???



Leif Gross, sales director Global Cruise Projects at Caterpillar Marine Power Systems in Hamburg, commented: "The design of the VM 43 C makes it a perfect match for cruise ships. Considering forthcoming IMO II regulation and increased environmental standards in general, it is essential for us to build in capability for both extra power and



The Cat Marine Hybrid System optimizes the use of currently available components and operates diesel engines at peak efficiency. For customers, this means significant reductions in owning ???



Cat Repair Option Marine; Rail Connection
Lippstadt; Spare parts; Turbocharger Service; Oil
diagnosis; Zeppelin Power Systems GmbH
Ruhrstrasse 158 22761 Hamburg Germany. Phone:
+49 40 8531510 Fax: +49 40 85315139 Email:
zps.hamburg@zeppelin