

Do cell towers have backup generators?

Backup Generators: Many of the most important cell towers have backup generators in place to kick in should a main power source go down. Some of the towers relying on natural gas even have a direct source of natural gas piped in to power backup generators.

Why do cell towers need backup power?

Backup power to cell towers is also crucial for emergency situations, providing a means for EMTs and others to share vital information. To protect against power loss, cell towers have begun to put the following precautions into place:

What are the components of a cell tower?

The core components of a cell tower are the radio equipment, antenna support structure, and antenna(s). The specific frequencies they use depend on the carriers occupying the tower. To keep everything running smoothly, a primary power system and a backup power or battery system are also essential, as power systems can and will fail occasionally.

How do cell towers work?

In general terms, cell towers use power to generate radio waves at a certain frequency. Your cell phone is tuned into a specific frequency range (or band) depending on what carrier you have and the features you're trying to use. That's how cell towers work. What Components are in a Cell Tower?

What is a cell tower?

A cell tower, also known as a cell site, or a Base Transceiver Station, is a structure that produces a cellular signal as a "cell" in a cellular network. This is accomplished with a myriad of transceivers, digital signal processors, control electronics, primary and backup electrical power, and GPS receivers.

What is a cellular tower & why is it important?

It's a critical component in a cellular network, which allows mobile devices like cell phones and tablets to connect to the internet and make calls. Cell towers are also known as cellular towers, cell phone towers, antenna towers, communication towers, mobile towers, telecom towers, telephone towers, wireless

CELL PHONE TOWER POWER BACKUP



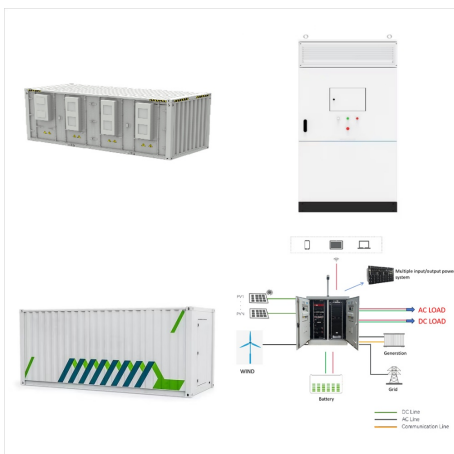
communication towers, and 5G towers.



Neither California nor the federal government requires cell phone towers to have backup power, even though network service is a critical part of modern life. Instead, maintaining service is left up to cell phone companies, which have generators lasting days at some sites but batteries which can survive just a few hours at others. When those run



Backup and emergency power generators play a number of important roles in the telecommunications industry. Whether it's running lighting that keeps your crew working around the clock in an emergency or providing standby power for a cell tower, a telecom generator must be easy to use, reliable and tough enough to perform in the most demanding conditions.



Backup for Urban and Remote Cell Towers. Cell tower space is becoming crowded with many others industries vying for the rented space. You need backup telecom generators that can deliver the needed kW's, while fitting into ???

CELL PHONE TOWER POWER BACKUP



Most cell phone towers run on electricity from the grid, although they often also have onsite backup power, like diesel generators or batteries. ReliOn fuel cells provided seamless backup power at 56 Sprint cell towers, where grid outages averaged 16 hours per site, with one outage lasting 50 hours. Today, more than 6,000 fuel cell systems



Explore 5 types of cell phone towers and their roles in mobile communication. Learn about their components and functions for seamless connectivity including monopole, lattice, guyed, stealth and Rooftop towers. UPS is used as battery backup system in case of failure of mains power. Cell site consists of various interfaces with PSTN for wired



In the latter category, cell towers are often attached to buildings, bridges, tunnels, water towers, traffic lights, street lights, billboards, etc. Also Read: Do Phone Towers Cause Cancer? The Range Of A Cell Tower. The working range of a cell tower is defined as the range within which mobile devices can connect reliably to the cell tower.

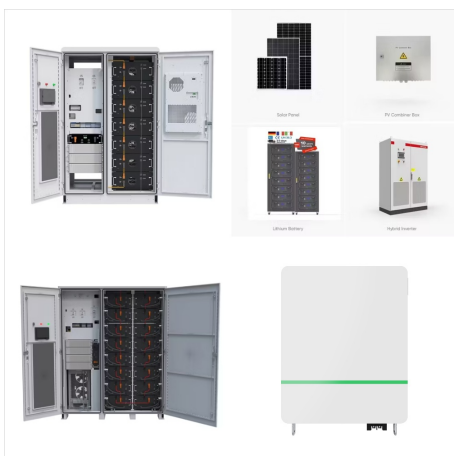
CELL PHONE TOWER POWER BACKUP



TG90? Portable Charger 10000mah Cell Phone Battery Backup, Ultra Slim Power Bank with Built in Cables, Portable Phone Charger Battery Packs Compatible with iPhone16/15 and Android Phones. 4.3 out of 5 stars. 3,578. 200+ bought in past month. \$39.99 \$???

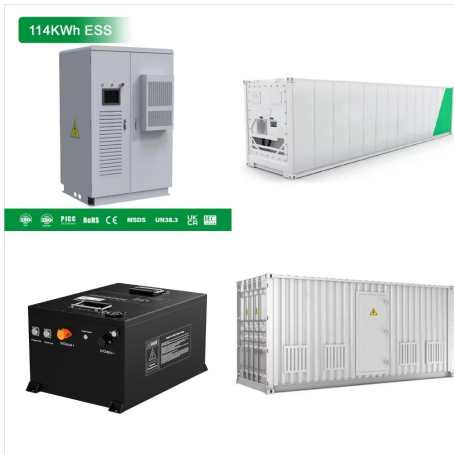


Cell phone towers operate on the power grid, and not all towers have a backup power supply in place should the electricity go out. Depending on the extent of a power outage, not all the towers in an area could be affected as it could be just one major circuit on the grid having a problem, so anything not on that circuit is fine.



Backup for Urban and Remote Cell Towers. Cell tower space is becoming crowded with many others industries vying for the rented space. You need backup telecom generators that can deliver the needed kW's, while fitting into a smaller footprint. Generac Industrial Power provides rugged diesel and natural gas generators to provide the standby power

CELL PHONE TOWER POWER BACKUP



Yes, cell phone towers have backup power to ensure uninterrupted service during such times. In fact, most cell phone towers have multiple backup power sources, including batteries, diesel generators, and solar panels. Backup Power Lines of Defence. The batteries are typically the first line of defence in case of a power outage, providing backup



A cell site, cell phone tower, cell base tower, or cellular base station is a cellular-enabled mobile device site where antennas and electronic communications equipment are placed a GPS receiver for timing (for CDMA2000/IS-95 or GSM systems), ???



Battery Backup Power Systems for Security
Cameras; Forever power off grid solar Phone
Number Street Address City State ZIP Code
shipping container lighting, bus shelter lighting,
mailbox lighting, traffic counting kits, cell tower ???

CELL PHONE TOWER POWER BACKUP



A cell site is composed of the antenna and ground equipment and other equipment such as transmitters, receivers, GPS, backup power sources, base transceiver stations; whereas the cell tower is the physical structure on which the equipment sits. This is all to say, when you make a call, your phone will find the nearest cell tower and send a



When PG& E and SDGE shutoff of power, will the cell towers work? Some cell towers will be operational for a brief period of time and other cell towers will go completely offline. The site specific answer will depend on if the cell tower, or cell site, has a back-up generator, or if the wireless carrier has swiftly deployed a back-up generator.



"Since 2010, American Tower's shared generators have provided over 420,000 hours of backup power due to outages, with over 90,000 hours of power provided due to outages in 2020 alone," the company

CELL PHONE TOWER POWER BACKUP



The QuantumCore Uninterruptible Power Supply (UPS) Series provides a backup power battery solution for cell phone towers and other critical telecom infrastructure, supporting telecommunication system hardening, restoration and long term emergency response. This compact, cost-effective telecom battery backup system is capable of storing up to



Negotiating Cell Tower Lease Language; Reasons Why a Cell Phone Company Is Interested in Leasing Your Property; by the FCC has created a requirement that carriers increase or provide sufficient emergency/backup power at their cell sites. These backup power rules, which are currently being contested by CTIA and other entities, require that



The bill aims to obligate companies like AT& T and Verizon to provide battery backup to their hundreds of cell towers and warnings to cell users when backup is running low or about to run out. SB431 is part of a package of bills designed to provide backup power to not only cell towers, but also to hospitals and vulnerable residents.

CELL PHONE TOWER POWER BACKUP



Fortunately, a cell phone will work during a power outage, although users should remember there are many reasons why calls might not get through. Advertisement Therefore, cell towers typically have battery backup arrangements that support operations for two to four hours, depending upon call traffic. In 2008 the FCC wanted to order an eight



That's because many cell phone towers have batteries or generators that act as backup power in the event of a failure of the electrical grid. Up and down the East Coast, coverage on all the



The order was an outgrowth of the FCC-established Hurricane Katrina Panel's findings that landline and cell phone companies in the impact area did not maintain adequate power backup supplies to keep the telephones operating, and power backup supplies need to be installed at key phone and cell phone locations nationwide.

CELL PHONE TOWER POWER BACKUP



power fails, the Cell Site will fail without a reliable source of uninterrupted backup power. The CSRIC WG9 Backup Power Sub-team has come together to identify the approaches and recommendations to share backup power resources to enhance the reliability of the Nation's critical communication infrastructure.



The QuantumCore Uninterruptible Power Supply (UPS) Series provides a backup power battery solution for cell phone towers and other critical telecom infrastructure, supporting telecommunication system hardening, restoration ???



Sacramento, CA ??? As the Kincade Fire burns in Sonoma County forcing the largest evacuation ever in the county during one of the biggest Public Safety Power Shutoffs in California history, the cell towers residents have come to rely on have gone dark. This has left hundreds of thousands of Californians in harm's way without their cell phone during a disaster.

CELL PHONE TOWER POWER BACKUP



The height of a cell phone tower is crucial for optimal signal transmission. Taller towers help signals travel over longer distances and avoid obstacles like trees or buildings. They often feature backup power supplies and other critical infrastructure to ensure continuous operation. - Towers can be freestanding, attached to buildings, or



Phone company representatives met with lawmakers over what the issue was with backup power. AT& T and Verizon representatives said that only 3% of the cell phone towers in blackout affected areas were down, with most areas having the slack taken up by other surrounding towers still on the grid.