



Power range: 1-10 kVA. The CPSS 3 Central Power Supply for emergency systems (1-10kVA) uses the fully digital control technology and the latest high frequency conversion technology, thus presenting high efficiency, high power factor and other advantages. The CPSS 3 is a tower Central Power Supply which features significant energy savings and greatly reduces operating costs.



The hybrid power supply system is designed to provide reliable and uninterrupted power supply while minimizing the environmental impact and reducing the dependency on fossil fuels. The system is usually automated and can switch between the different power sources based on the availability of the energy sources and the power demand.



RP-Technik GmbH's product range includes complete systems for up to 50,000 luminaires, supplied with power either centrally or decentrally. The different systems can be combined with each other, can be optimally customised to individual requirements and ???

# CENTRAL POWER SUPPLY SYSTEMS



Covering multiple aspects of the central power supply system, the BS EN50171 looks at source of power, fixtures and distribution. Meeting particular safety and performance standards ensures the reliability of CPSS solutions which are supporting emergency lighting systems.



Central Battery Systems are crucial emergency lighting solutions designed to support your lighting, fire safety and emergency backup systems. They are central power supply systems that protect your emergency and exit lights, exit signage and other life ???

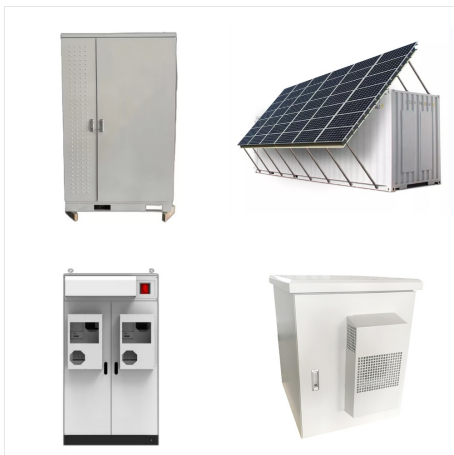


The Central Power Supply for emergency systems CPSS7 (10-200kVA) is a static CPSS. It utilizes advanced 3-level inverter technology and digital technology for complete interconnection, offering benefits such as high efficiency and high power density while only taking up a small amount of floor space.

# CENTRAL POWER SUPPLY SYSTEMS



Central Power Supply Systems require a combination of resilience, regulatory compliance, and ease of use. To meet these objectives, Riello UPS's emergency UPS typically incorporate the following features: Battery autonomy up to three hours or longer if necessary (at least one hour if there is an on-site generator)



The EMERGENCY CPSS range (Emergency Central Power Supply System) has been designed to answer your needs in terms of power supply for your safety system. All our Emergency products are compliant with standard EN 50171. ???



Central battery systems provide an uninterrupted power supply to a group of loads from a central location. These systems are more space and energy-efficient because the batteries are located in a central area, rather than being spread ???

# CENTRAL POWER SUPPLY SYSTEMS



applicable systems. Systems Certified to: BS EN 50171 2021, BS EN 61508 & IEC 62477 80 EMERGI-LITE EMERGENCY LIGHTING & CENTRAL POWER SUPPLY SYSTEMS System design The system has been designed solely for emergency lighting, and not modified from other less essential power supply requirements. As such, the system



, Central Power Systems & Services has been providing partners with the highest level of support. No matter the situation, we have solutions for Power Generation, Power Distribution, Industrial Engines, Construction and Agricultural Equipment, Custom Manufactured Projects and On-Highway Transportation Service.



Experience innovative power solutions with Central Power, an industry leader since 1954. mtu Rolls-Royce products leverage proven technologies to deliver optimized performance and environmental sustainability that meet modern energy needs. With the revolutionary Kinetic PowerPack UPS system based on kinetic energy exchange via an electromagnetic clutch, you ???

# CENTRAL POWER SUPPLY SYSTEMS



The CBS central power supply system is a an advanced, reliable and user-friendly central battery system, designed in compliance with the requirements and all important standards. The CBS system can be flexibly adapted to each ???



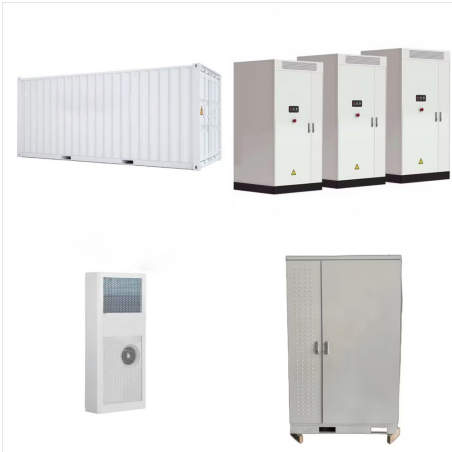
The EMergency CPSS range (Emergency Central Power Supply System) has been designed to answer your needs in terms of power supply for your safety system. All our Emergency products are compliant with standard EN 50171. Conformity ???



Central Power can offer generator genset rental solutions for your power needs. Power Generator rentals of all sizes ranging in size from 5kW to 1,750kW are available. Central Power has the rental products you need to get the job done and to keep your power on. We focus on delivering precisely what each client needs, when they need it 24/7/365.



# CENTRAL POWER SUPPLY SYSTEMS



Emergency central battery systems ??? BSI Kitemarked (KM 673347) to BS EN 61508:2010 (SIL2 capable) ??? Available with integrated EMEX Test system 2 EMERGENCY LIGHTING CENTRAL BATTERY POWER SUPPLY SOLUTIONS. Slave emergency lighting A full range of slave luminaires and exit signs, including LED, for use with AC/AC and AC/DC



to dedicated emergency luminaires in the event of power failure for a determined period of time. Below considerations must be given when selecting a central power supply for life safety system EN50171 The European Norm (EN) or standard for the design and build of Life safety Central power supplies is EN50171. EN50171 is not



central power supply systems. They are designed to operate in a passive standby mode which means they are able to provide full power to the emergency lighting load from cold (previously un-powered load) within the time limits of EN 1838.

# CENTRAL POWER SUPPLY SYSTEMS



Central power supply systems RP-Technik GmbH's product range includes complete systems for up to 50,000 luminaires, supplied with power either centrally or decentrally. The different systems can be combined with each other, can be optimally customised to individual requirements and most of them are T?V type-tested.



Central Power Supply Systems (AC/DC) Central Power Supply Systems provide low voltage AC power (nominally 24V, 50V or 110V AC) whilst mains to the system is healthy, and low voltage DC (of the same voltage) when mains fails. Learn more on how to select the right central battery systems for emergency lighting here.



Central Power Supply Systems (CPSS) are vital pieces of equipment across various industries and facilities, providing a centralised power source to critical equipment, such as emergency ???

# CENTRAL POWER SUPPLY SYSTEMS



Central Power Supply Systems (CPSS) are vital pieces of equipment across various industries and facilities, providing a centralised power source to critical equipment, such as emergency lighting, fire alarms, security systems, and other essential devices. Also known as Central Supply System (CSS), they play a crucial role in maintaining safety



Central Power Supply Systems (CPSS) are a specific type of standby power solution used with emergency and safety-related applications such as lighting, alarms and security systems. Also ???



UPSBuyer is your destination for CSS range by Riello UPS, providing robust Central Power Supply Systems designed for emergency scenarios. Featuring the Sentinel Tower, Sentryum, Multi Sentry, and Master series, our CSS offerings provide the assurance your safety systems need during power interruptions, meeting rigorous EN 50171 standards.



# CENTRAL POWER SUPPLY SYSTEMS



A Central Power Supply System (CPSS) differs from a common UPS because it has precise characteristics. A CPSS is used to power emergency systems, mainly for security lighting in public and private buildings, but also for automatic firefighting systems, fume extraction equipment, alarms and carbon monoxide detection systems.



They are similar to AC/DC Central Power Supply Systems but differ in that they maintain an AC output at all times. Central Power Supply Systems (AC/DC): During normal operation, these systems supply low voltage AC power (typically 24V, 50V, or 110V AC). However, in the event of a mains failure, they switch to providing low voltage DC power of



Generac Services is the factory authorized distributor for Generac Industrial Power Systems in South Florida. We supply our customers quality generator sets for commercial, standby, prime, portable, industrial, rental and residential ???

# CENTRAL POWER SUPPLY SYSTEMS



A selection of standards regulates emergency lighting systems in the UK. These include workplace safety, fire safety, as well as measures that control design, material, clarity, size, locations of the fittings, central power supply and maintenance.