



What are solar charge controllers & lithium batteries?

Before delving into the specific settings, it's essential to grasp the fundamental concepts associated with solar charge controllers and lithium batteries. Charge controllers regulate the voltage and current from solar panels to charge batteries optimally.

How do charge controllers protect lithium batteries from overcharging?

Ensuring the safe and efficient charging of lithium batteries with solar power requires the use of charge controllers. These devices play a vital role in regulating the current flow from solar panels to lithium batteries, preventing overcharging and ensuring battery safety.

How to charge a lithium battery with solar power?

To charge a lithium battery with solar power, make sure you have solar panels, charge controllers, batteries, and inverters. Match the solar panel wattage, charge controller amperage, and battery specifications carefully. High-quality charge controllers enhance safety and efficiency.

What is a solar charge controller?

Solar charge controllers play an integral role in solar power systems, making them safe and effective. You can't simply connect your solar panels to a battery directly and expect it to work. Solar panels output more than their nominal voltage. For example, a 12v solar panel might put out up to 19 volts.

How to charge a lithium battery effectively?

Utilize advanced technology and efficient charging methods for battery longevity. Charging lithium batteries effectively requires essential components like solar panels, charge controllers, batteries, and inverters. When it comes to solar power, the efficiency of the charging process hinges on the quality of these components.

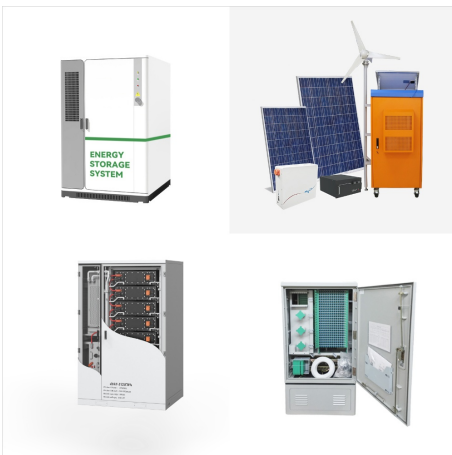
Can I use a PWM controller with a lithium battery?

While it's technically possible to use a PWM controller with a lithium battery, it's not recommended due to the limitations of PWM controllers in managing the unique charging profiles of lithium batteries. What happens if my solar charge controller is undersized?

# CHARGE CONTROLLER FOR LITHIUM ION BATTERY



The IQ4 LIFEPO4 is tailored for use with today's state-of-the-art LiFePO4 batteries that use a Battery Management System. The IQ-LIFEPO4 allows the DLS to deliver proper voltage to charge the larger 2-Stage Smart Charge Controller for the ???



The IQ4 LIFEPO4 is tailored for use with today's state-of-the-art LiFePO4 batteries that use a Battery Management System. The IQ-LIFEPO4 allows the DLS to deliver proper voltage to charge the larger 2-Stage Smart Charge Controller ???



Lithium-ion batteries have Hi, I have a LifePo4 12v 100ah Lithium Battery can I use a Noma100W solar panel with 8.5amp controller to charge this battery? Your info says to charge with a 14.4 volt controller???:the Noma controller says it is 14.2v Thank you! Reply.

# CHARGE CONTROLLER FOR LITHIUM ION BATTERY



A specialized lithium-ion charge controller is designed specifically to meet these requirements and ensure optimum performance and longevity of the battery. Some advanced models come with additional features such as remote monitoring capabilities and programmable settings for customized charging profiles.



Check out this Best Choice List of Solar Charge Controller for Lithium ion Battery and lithium ion battery for rv solar-21%. MPPT Solar Charge Controller. 60A MPPT Solar Charge Controller 48V 24V \$ 299.00 Original price was: \$299.00. \$ ???

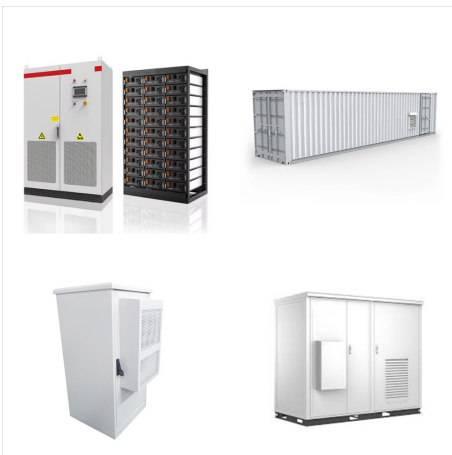


Do You Need a Solar Charge Controller for a Lithium Ion Battery? You need a solar charge controller to charge any 12V battery with a solar panel. You also need to take into account the correct size cable for the 12v solar panel. A portable generator may be an exception because it should have one built-in and an inverter.

# CHARGE CONTROLLER FOR LITHIUM ION BATTERY



How to Charge Lithium-ion (or LiFePO4) Batteries?  
There are several ways to charge Lithium batteries  
??? using solar panels, a DC to DC charger  
connected to your vehicle's starting battery  
(alternator), with an inverter charger, or with a  
portable 12V battery charger or 24V battery charger.  
While charging LiFePO4 batteries with solar is  
perfect for sunny days, you ???



Sodium Ion; Dual Purpose; AGM; Lead Carbon;  
Gel; By Capacity. 0 to 100Ah; 101 to 200Ah Our  
range of lithium-compatible solar charge controllers  
is specifically designed for lithium batteries,  
ensuring optimal charging and extending the battery  
life. We offer both MPPT and PWM solar charge  
controllers that are compatible with lithium



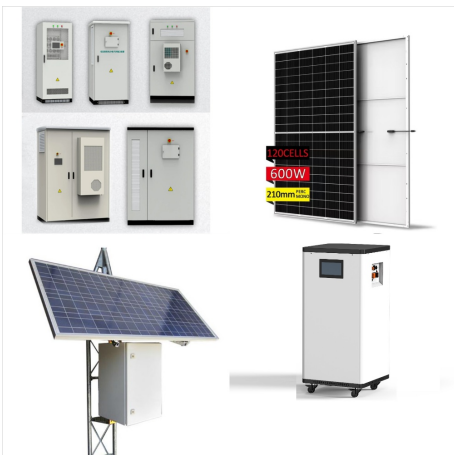
Premium MPPT solar charge controller suitable for  
use with Lead Acid, LiFePO4 or LiNiMnCoO2  
lithium batteries. Compounds & Accessories Fans  
Equipment Knobs Other Components Modules &  
Sub Assemblies Power & Batteries Rechargeable  
Batteries Ni-MH & Ni-Cd Batteries Li-Ion/Li-Po SLA  
& Gel Non-Rechargeable Charge Mode F04 is for  
Lithium 12



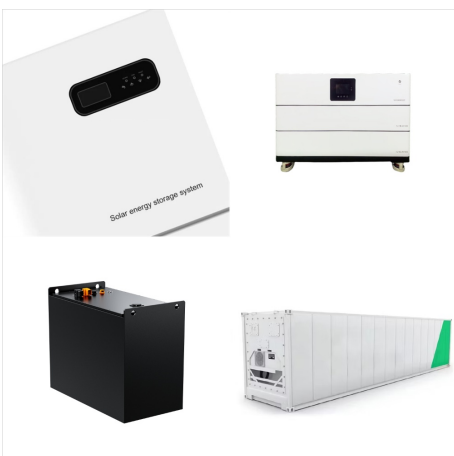
# CHARGE CONTROLLER FOR LITHIUM ION BATTERY



Very universal and versatile module for charging any type of the battery with 12 or 24 volts. You can use generator, solar panel and any other power supply as 10V~30V DC Input to charge your 12V or 24V Lead-acid batteries, lithium-ion batteries, polymer batteries, Car ???



Programming Other MPPT Solar Charge Controllers  
If your system has a Morningstar Professional Series SunSaver MPPT, Schneider Conext MPPT, Magnum Energy MPPT, or another type of MPPT solar charge controller, it may still be compatible with Battle Born Batteries.. First, ensure it can be programmed with the following settings: Absorption voltage: ???



Solar Charge Controllers With over 4 million products sold in over 100 countries since 1993 ??? functioning in some of the most extreme environments & mission-critical applications in the world ??? Morningstar Corporation is truly "the leading supplier of solar controllers and inverters." Morningstar's stable management along with the lowest employee ???

# CHARGE CONTROLLER FOR LITHIUM ION BATTERY



The charge controller in your solar installation sits between the energy source (solar panels) and storage (batteries). Charge controllers prevent your batteries from being overcharged by limiting the amount and rate of charge to your batteries.



To ensure the efficient and safe charging of lithium ion batteries using solar power, it's crucial to set up the solar charge controller correctly. In this guide, we'll walk you through ???



Lithium-ion Battery Rated Charge Current: The maximum current the charge controller can charge the battery is called rated charge current. Battery Voltage: The number refers to the compatible nominal battery voltage and is usually available on the system. Most popular MPPT systems are compatible with 12V and 24V batteries; therefore, they

# CHARGE CONTROLLER FOR LITHIUM ION BATTERY



Safety Instructions: A) Make sure your battery has enough voltage for the controller to recognize the battery type before first installation. Too low or dead voltage battery won't activate the solar charge controller B) The solar charge controller can be charged for lead acid batteries (Sealed, Flooded, AGM, GEL), 3S or 6S lithium ion and 4S or 8S lifepo4 batteries, but you need to ???



Buy 12V MPPT Solar Charge Controller for 3S Lithium ion Battery online from KTRON India. Its a high end solar Charge Controller using CN3722 chip. Get Lightning Fast dispatch on all orders without any extra charge. And avail GST credit on all your purchases. KTRON India.

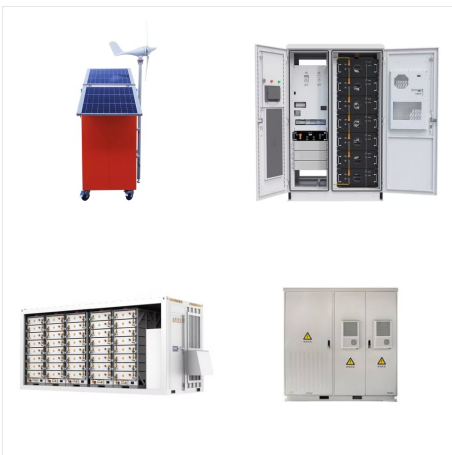


Amazon : lifepo4 charge controller. 20A 12V 24V Solar Charge Controller PWM Regulator for Solar Panel kit System for AGM Lead Acid Gel Sealed Flooded and Lithium Battery, LiFePO4 Lithium Ion Phosphate Deep Cycle Battery. 3.8 out of ???

# CHARGE CONTROLLER FOR LITHIUM ION BATTERY



There are also multi-chemistry chargers that can charge different types of lithium batteries such as Li-Ion, LiFePO4, and more. When selecting a lithium battery charger controller, prioritize models that offer these ???



How long does it take to charge a lithium battery. The time it takes to charge a lithium battery depends on several factors, including the power output of the charger and the capacity of the battery. Generally, charging a lithium battery can take anywhere between 1-4 hours, depending on the specific charger and battery combination.



To charge a lithium battery with solar power, make sure you have solar panels, charge controllers, batteries, and inverters. Match the solar panel wattage, charge controller amperage, and battery specifications carefully.



# CHARGE CONTROLLER FOR LITHIUM ION BATTERY



Safety Instructions: A) Make sure your battery has enough voltage for the controller to recognize the battery type before first installation. Too low or dead voltage battery won't activate the solar charge controller B) The solar charge controller can be charged for lead acid batteries (Sealed, Flooded, AGM, GEL), 3S or 6S lithium ion and 4S or 8S lifepo4 batteries, but you need to ???



With a max input limit of 100V, the EPEVER 40A charge controller is ideal for use with small and medium size arrays. You can wire up to four 12V solar panels in series (12V solar panels usually exceed that voltage, hence the limit of 4).



For example, for  $R_{SETI} = 2.87 \text{ k}\Omega$ , the fast charge current is 1.186 A and for  $R_{SETI} = 34 \text{ k}\Omega$ , the current is 0.1 A. Figure 5 illustrates how the charging current varies with  $R_{SETI}$ . Maxim offers a handy development kit for the MAX8900A that allows the designer to experiment with component values to explore their effects on not only the constant-current ???

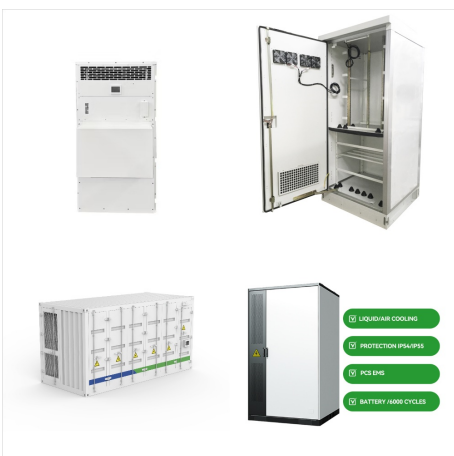
# CHARGE CONTROLLER FOR LITHIUM ION BATTERY



Automatic Li-Ion Cell Charger and Controller Circuit.  
Conclusion. Would it be possible to make this able to charge 6x 4.2v Lithium ion battery's separately with their own scr trigger while only using 1 lm317.  
Reply. Afterburn Effect says. August 30, 2017.



1. Allto Solar 20Amp 12V/24V MPPT Solar Charge Controller For Lithium Ion Battery. The Allto Solar 20Amp 12V/24V MPPT Solar Charge Controller is a versatile and efficient device designed specifically for charging ???



W 12V solar panel ??? I'd recommend a 50 to 100 watt solar panel for this setup. The max solar panel size for this setup is 120 watts. 12V LiFePO4 battery ??? I'm using a 100Ah battery, but you could use a smaller or bigger one as long as it's still a 12V battery.; Allto Solar MPPT charge controller ??? This isn't your traditional-looking MPPT charge controller, but ???

# CHARGE CONTROLLER FOR LITHIUM ION BATTERY



Lithium ion Battery Charge . Lead Acid Battery Charge Support ; The user interface is a little difficult but after initial setup this is an awesome charge controller. I have a 48v lithium ion battery bank with 200Ah capacity. I charge with a couple panels that output about 51v, 4A. Read more. 3 people found this helpful.



Lithium-ion (Li-ion) batteries are popular due to their high energy density, low self-discharge rate, and minimal memory effect. Within this category, there are variants such as lithium iron phosphate (LiFePO4), lithium nickel manganese cobalt oxide (NMC), and lithium cobalt oxide (LCO), each of which has its unique advantages and disadvantages



Renogy Wanderer Li 30A 12V PWM Negative Ground Solar Charge Controller Solar Panel Regulator w/ Temp Sensor Function Fit for Lithium, Sealed, Gel, and Flooded Batteries, Wanderer Li 30A. Visit the Renogy Store. 4.4 5,131 ratings. ???

# CHARGE CONTROLLER FOR LITHIUM ION BATTERY



with Lithium-ion Batteries . With the growing availability and decreasing cost of lithium-ion batteries, they are more frequently used in solar + storage systems where daily cycling is part of the duty cycle. While OutBack Power's Radian and FXR inverters, as well as the FLEXMax charge controllers, were