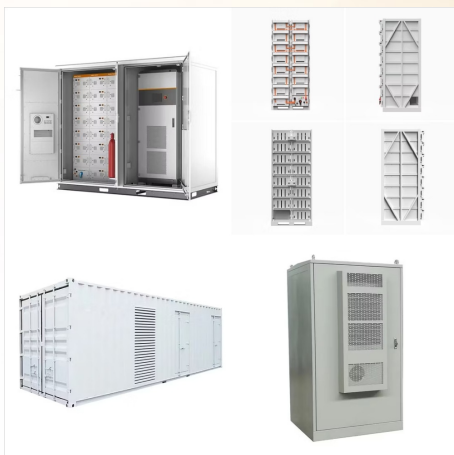


Reputable KTM dealer advised against lithium battery on "22 890 Adventure R. They had issues with electronics acting up on 1290 but can't say if it would apply to the 890. Couple hours later, unhooked the other battery and let it finish the charge. Battery has been doing very well for the last several weeks. I think the voltage will stay



Trickle charge the battery: Trickle charging means charging a fully charged battery at a rate equal to its self-discharge rate, thus enabling the battery to remain at its fully charged level; this state occurs almost exclusively when the battery is not loaded, as trickle charging will not keep a battery charged if current is being drawn by a



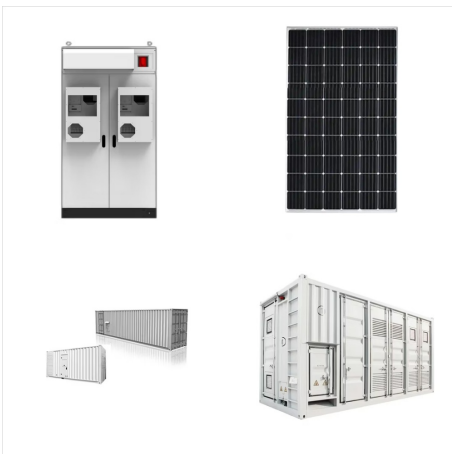
What chargers are people using for the lithium battery on electric start sxf's? Jump to content. 250/350/450/505 SX-F & XC-F; Activity. All Activity; TT Picks; Podium; Search; More . Forums; Clubs; Articles; Reviews. Products; Vehicles; More . KTM sells 2, a \$40 one and a \$150 charger. I use the \$40 charger it works and I feel the more



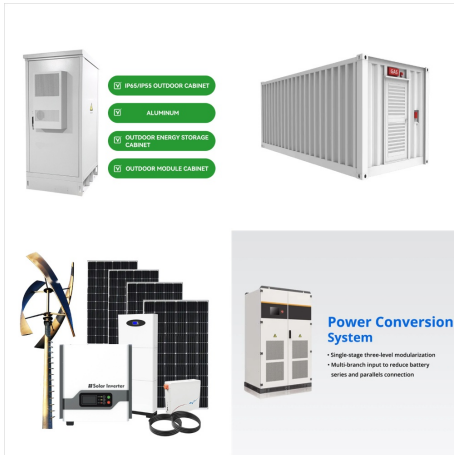
Charge question, the fuel or oil pump was kicking on when on charger. I sold my 2017 TX and now have a 2020 TPI TX and I love it, only 35 hours. It's super winter here and I was trying to charge Lithium battery with a lithium specific charger. I tried some cleaning up terminals and diode grease a



Most standard chargers are not suited to Lithium battery charging, I would recommend reading the chargers instructions very carefully to ensure suitability before use The new KTM Husky LI batteries are really good, have two 2017 and haven't bothered to charge either and so far not one issue (over 100 hours using them).



Is the KTM electrical charging system set up to handle a Lithium battery? Lithium (LiFePO_4) batteries accept a much larger charging current than Lead Acid (traditional) batteries, like comparing a fire hose to a garden hose volume of water. This can overtemp the alternator, if the bikes regulator isn't set up for Lithium.



Did a good amount of research and found out that not all lithium batteries are the same. This is a Lithium Iron or LiFePO4 which can tolerate higher temps, are much safer and don't catch fire or explode like the older Lithium Ion. This one has plenty of cold cranking amps, 140. KTM USA told me our 690's require 125-130 cca.



Don't bother. A lithium iron phosphate battery will hold its charge for over a year on the shelf. If it goes flat on the bike, your bike's electrics are at fault. If you insist on buying one, this is as sophisticated as you will ever need. Maypole MP7402 Automatic Battery Trickle Charger 12volt 0.5Ah from County Battery Services.



If your motorcycle battery is dead then you have come to the right place! This motorcycle battery finder will help you select the right battery for your motorcycle. Whether you're going for a cheap lead-acid battery, a better quality one, like a VRLA or AGM or whether you want to step into the future and buy a lightweight Lithium battery, this guide is for you. We've listed every make and ???



I'm thinking of using a lithium battery because i have absolutely no trust to the yuasa ytz14s-bs that is installed from the . I dont trickle charge the battery through the winter as Lithium batteries dont need that. the worldwide KTM forum community to discuss topics covering Super Duke, 500 EXC, RC8, KTM 690, 790, 990, 1190, 1290. KTM



The Tusk Lithium Pro Battery TLFP-7L is the ideal choice for KTM 300 XC-W (Fuel Injected) models from 2019 to 2023, thanks to its advanced lithium iron phosphate technology.. Weighing just 1.5 pounds, it's a third of the weight of traditional lead/acid batteries, making it a fantastic lightweight option.. This high-performance battery boasts 140 CCA and a ???



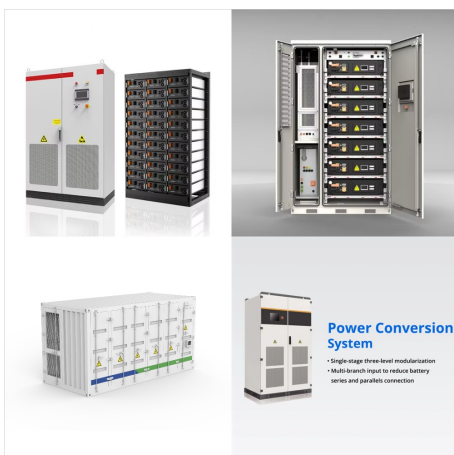
To properly charge a lithium battery, follow these steps: What type of charger should I use for lithium batteries? It is essential to use a charger specifically designed for lithium batteries. These chargers are equipped with a built-in circuitry that regulates the charging process, preventing overcharging and ensuring the battery's longevity



Hello everyone, im new here, waiting for my KTM 890 r to be delivered, i would like information on the best usb charger cable, and lithium battery options out there . i was thinking of the quadlock usb charger or the one on the KTM parts website. I have been wayiting almost 3 months now and I got to the point ill order all the small upgrades



The Shorai Lithium-Iron Battery LFX19A4-BS12 stands out as an exceptional choice for KTM 1290 Super Adventure R owners, especially those looking to shed weight without sacrificing performance.. Weighing in at just 4.3 pounds less than previous generations, this battery offers a compact size that enhances the bike's agility. Its robust construction ???



into this mix you have new technologies such as lithium batteries offering huge weight saving but at a price premium When weight is a major consideration lithium is the way to go, remember to buy an appropriate charger for your lithium. Just like Lead/Acid Lithium can also be over charged with the wrong charger.

CHARGING KTM LITHIUM BATTERY



If it is Lithium Ion, it has no place on a motorcycle as it is a fire risk. If it is Lithium Iron (LiFePO4) then use a standard charger and NOT an Optimate or similar. The charging cycle used by an Optimate is not good for LiFePO4 chemistry. What brand is it? If it is a Shorai then you have an excellent battery that should serve you well.



I flattened a KTM lithium battery and it wouldn't respond at all to my battery tender. The BT's light blinked as if it wasn't hooked up. So I pulled the battery out of the bike and put the old lead acid battery back in. Then for the heck of it, I left the BT on the lithium battery overnight. Next day, it was fully charged.



NOCO GENIUS2, 2A Smart Car Battery Charger, 6V and 12V Automotive Charger, Battery Maintainer, Trickle Charger, Float Charger and Desulfator for Motorcycle, ATV, Lithium and Deep Cycle Batteries \$49.95 \$ 49 . 95



I want to upgrade my new 890R with a lighter-weight Lithium battery. Im looking for experiences and recommendations on brands and specific batteries. batteries were no longer being recommended for the 790/890 on advice from Zero Gravity that the onboard computer of the KTM had issues with the battery management module on the battery



Maximum charge current for fast charging - 32 amps. FITMENT. KTM 790 Adventure 2019-2021, 2024; KTM 790 Adventure R 2019-2020; KTM 790 Adventure R Rally 2020; KTM 890 Adventure 2021-2023; KTM 890 Adventure R 2021-2024; KTM 890 Adventure R Rally 2021. 2024; KTM 890 SMT 2024; KTM 1290 Super Duke GT 2016-2023; KTM 1290 Super Duke R 2020-2022



1-48 of 228 results for "ktm battery charger"
Results. Check each product page for other buying options. Price and other details may vary based on product size and color. ULTRAPOWER 4-Amp 14.6 Volt LiFePO4 Battery Charger, 12.8 Volt LiPO Lithium Battery Charger, 4-Stages Smart Battery Charger for Cars, Motorcycles, Golf Carts, UAV, Fishing Boat



Charging a lithium battery pack may seem straightforward initially, but it's all in the details. Incorrect charging methods can lead to reduced battery capacity, degraded performance, and even safety hazards such as overheating or swelling. By employing the correct charging techniques for particular battery chemistry and type, users can



If your bike produces less than that because of a tired charging system, the lithium battery will not charge, and it will ultimately run out of juice, leaving you high and dry. 2025 KTM 990 Duke R ??? First Look. 2025 BMW M 1000 R and S 1000 R ??? First Look. Next. Prev. You may also be interested in. The 10 Best Motorcycle Helmets You Can



Non-lithium profile chargers tend to have a lower charge current rate. iTechworld lithium deep cycle batteries can take a charge current of up to 50 amps. Selecting a charger with a lithium profile and a high charge current will ensure your battery will charge very quickly. Check out our range of lithium battery chargers. The best way to charge