



Should you charge a lithium ion battery first?

There is no reason that charging a Li-ion battery up the first time before playing with your new device, would in any way extend the life of the device or the battery. The simple fact is properly stored lithium-ion batteries are charged to about 50%, and lose some of that charge (depending) while sitting around in the package, or being shipped.

How long should you charge a new lithium ion battery?

Overcharging can damage your battery and shorten its lifespan. As many of us know, it is best practice to charge a new lithium-ion battery for 8 hours before using it. This allows the battery to reach its full capacity and ensures optimal performance. However, there are a few things to keep in mind when charging your new battery for the first time.

How to charge a lithium ion battery?

Here are some tips for charging your lithium-ion battery: Make sure you are using a charger specifically designed for lithium-ion batteries. Using the wrong type of charger can damage your battery or even cause it to catch fire. Lithium-ion batteries should be charged between 32°F and 113°F (0°C and 45°C).

When should you charge a battery?

That's because manufacturers typically only ship batteries with enough power to get them from the factory to your door. For this reason, it's important to charge (the three main types of battery charging are constant current charging, constant voltage charging, and pulse width modulation) your battery as soon as you can after receiving it.

What voltage should a lithium battery be charged?

Understanding the charging voltages for lithium batteries is crucial for maintaining battery health and performance. This includes knowing the appropriate voltages for the bulk, absorption, and float stages of charging. For lithium batteries, the recommended voltage range for battery charging is between 14.2 and 14.6 volts.

Should you charge a lithium ion battery at room temperature?

CHARGING LITHIUM BATTERIES FOR THE FIRST TIME



Most manufacturers recommend that you charge lithium-ion batteries at room temperature for optimal results. Charging them in extreme cold or heat can decrease their lifespan significantly. Once the battery is fully charged, remove it from the charger immediately to prevent overcharging (which can also shorten its lifespan).



Properly managing the charge level of your lithium batteries before winter storage is essential for their longevity and performance. Here are some important charging and discharging guidelines to follow: 1. Fully Charge the Batteries: Before storing your lithium batteries, ensure that they are fully charged. This helps prevent self-discharge



If you don't charge a lithium battery for a long time, it will eventually discharge and become unusable. A lithium battery will self-discharge at a rate of about 5% per month, so if you don't use it for six months, the battery will be completely discharged. First, if the battery is more than three years old, it's probably best to

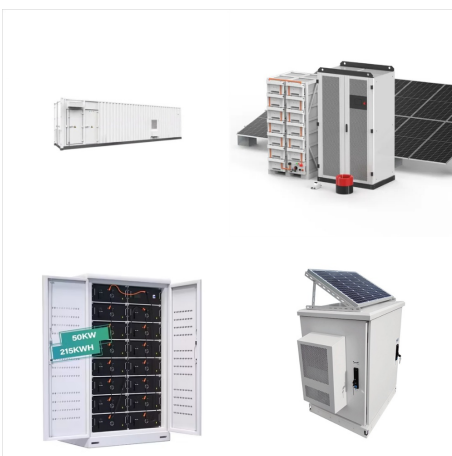
CHARGING LITHIUM BATTERIES FOR THE FIRST TIME



For 48V lithium batteries, charge to 58.4V for 30 minutes and float at 55.2V. Avoid Lead-Acid Chargers: It's crucial to avoid using lead-acid battery chargers with LiFePO4 batteries, as they can damage the battery. Monitor the Charging Process: Your battery will ???



So, you've just purchased your first lipo battery and you're eager to get it charged up and ready to go. Don't worry ??? we've got you covered on how to charge a lipo battery for the first time. Charging a lipo battery may seem daunting at first, but with a few simple steps, you'll be able to power up your battery safely and efficiently.



Lithium batteries have revolutionized the world of portable electronics, powering everything from smartphones to electric vehicles. Their lightweight design and high energy density make them a popular choice for consumers and industries alike. However, ensuring the longevity and safety of lithium batteries begins with proper charging practices, especially during the ???

CHARGING LITHIUM BATTERIES FOR THE FIRST TIME



Tip #4: Charge it Fully the First Time. If you're charging the battery for the first time, you should charge it for at least 12 hours. Plug it into the battery overnight and it should be ready to go in the morning. This will make certain that every cell has received a charge. Most newer lithium-ion bike batteries need charging regularly.



Advantages of lithium-ion batteries. Generally, lithium ion batteries are more reliable than older technologies such as nickel-cadmium (NiCd, pronounced "nicad") and don't suffer from a problem known as the "memory effect" (where nicad batteries appear to become harder to charge unless they're discharged fully first). Since lithium-ion batteries don't contain ???



Additionally, when charging a lithium battery with a normal SLA charger, you would want to ensure that the charger does not have a desulfation mode or a dead battery mode. If you have any questions about an existing charger's ???

CHARGING LITHIUM BATTERIES FOR THE FIRST TIME



Lithium-ion batteries represent a significant advancement in energy storage technology, offering high energy density and longevity. Proper charging and maintenance are paramount to harnessing their full potential and ensuring safety. This authoritative guide provides essential insights into the effective care of lithium



Charging lithium iron batteries requires lithium-specific battery chargers with intelligent charging logic. Using lead acid chargers may damage or reduce the capacity of lithium batteries over time. Charging lithium batteries at a rate of no slower than C/4 but no faster than C/2 is recommended to maximize battery life.



However, consistent use of fast charging methods can contribute to slightly reduced battery life over time. Charging lithium batteries correctly is essential for maximizing their lifespan, performance, and safety. By following the appropriate charging methods, using the right charger, and understanding optimal techniques, you can ensure your

CHARGING LITHIUM BATTERIES FOR THE FIRST TIME



? For the first time, Florida is making rules for safe use of dangerous rechargeable batteries that have become a big part of everyday life. Read full article: Charging lithium-ion battery may



Lithium batteries charge at 95% to 98% efficiency, which means that if 1000 watts of power is input to the battery, the battery retains 950 to 980 watts. Lithium batteries maintain this efficiency for their useful lifetime. Lead-Acid batteries, ???



Advantages of lithium-ion batteries. Generally, lithium ion batteries are more reliable than older technologies such as nickel-cadmium (NiCd, pronounced "nicad") and don't suffer from a problem known as the "memory ???

CHARGING LITHIUM BATTERIES FOR THE FIRST TIME



Note: If you're charging a Go Go(R) Endurance Li battery box for the very first time or after 25 days of storage, your battery will be in shut down mode.

Below are a few suggestions for achieving the maximum range per charge. Lithium-ion batteries perform best with short or interval charging and partial discharges;



When you charge a LiFePO4 battery, you are applying an external voltage to drive current from the anode to the cathode of the battery. The lithium battery charger acts as a pump, pumping current upstream, opposite the normal direction of current flow when the battery discharges. When the charger's applied voltage is higher than the open-circuit battery voltage, ???



1. Standard Charging: The standard charging method involves connecting the battery to the charger and allowing it to charge at a moderate rate. This method is safe and provides a steady charge, but it may take longer to reach full capacity. 2. Fast Charging: Fast ???

CHARGING LITHIUM BATTERIES FOR THE FIRST TIME



Discover optimal charging voltages for lithium batteries: Bulk/absorb = 14.2V???14.6V, Float = 13.6V or lower. Avoid equalization (or set it to 14.4V if necessary) This straightforward process provides a clear indication of the battery's charge level. Safety First: Calculating charging time for lithium batteries is a crucial step in

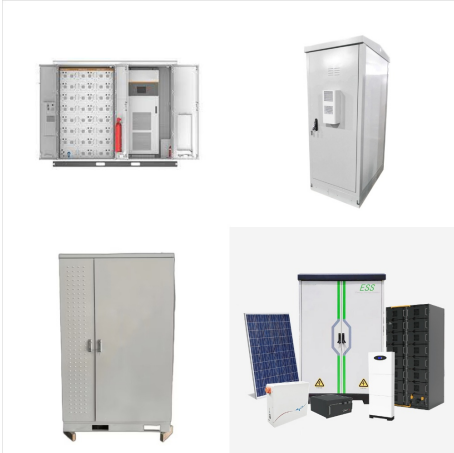


Everything you need to know about charging lithium batteries can be founded here, help your lithium battery charge quicker, last longer. A Lithium-Ion battery's average life span is 2 to 3 years or 300 to 500 charge cycles, whichever comes first. As we put it, a charging cycle is a duration of utilization when the battery is fully charged



The formulas for the calculator can be found here.. Is It Essential To Fully-Charge a LiPo Battery for the First Time? Yes, it is, and here is the reason. The scientific concept behind lithium-polymer batteries is that ions flow from the positive electrode to the negative electrodes through a lithium polymer electrolyte, which acts as a conduction medium.

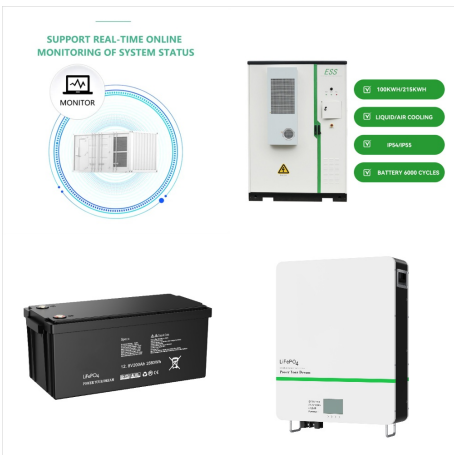
CHARGING LITHIUM BATTERIES FOR THE FIRST TIME



Additionally, when charging your lithium LiFePO4 batteries, always remember to match your charger to deliver the correct current and voltage for the lithium battery you are charging. For example, use a 12V lithium charger to charge a 12V lithium battery. Below is the charging voltage references. 3 Best Ways to Charge LiFePO4 Lithium Batteries



When the battery is first put on charge, the voltage shoots up quickly. This behavior can be compared to lifting a weight with a rubber band, causing a lag. Figure 3: Volts/capacity vs. time when charging lithium-ion [1] The capacity trails the charge voltage like lifting a heavy weight with a ???

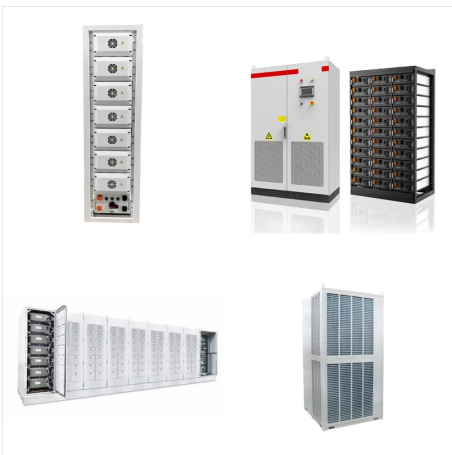


Before charging a lithium battery for the first time, it is essential to ensure that the battery is of good quality and eliminate the possibility of lithium battery failure. Checking the condition and state of a lithium battery can be done through simple visual inspections as well as more in-depth tests including voltage checks and load testing.

CHARGING LITHIUM BATTERIES FOR THE FIRST TIME



Part 4. Frequently held myths regarding battery charging. Lithium-ion battery charging is often misunderstood, which might result in less-than-ideal procedures. Let's dispel a few of these rumors: 1. Recollection impact. Unlike other battery technologies, lithium-ion batteries do not experience the memory effect.



And I don't think the first charge is where it will necessarily go wrong. I mean, I've seen batteries go wrong after a few hundred cycles and I've things go wrong with a brand new battery. RNG, I guess lol. I think it's more or less to make sure the battery and the charging circuit are working correctly. Sort of like quality control after shipping.



The battery can be used without any problems at this charge level, even the first time it is used. Charging a lithium-ion battery to 100% takes a little longer, with the exact time depending on the type of battery. Three points count for ensuring correct charging of a lithium-ion battery. First, the temperature should be between +5 and +40

CHARGING LITHIUM BATTERIES FOR THE FIRST TIME



When you charge a LiFePO4 battery, you are applying an external voltage to drive current from the anode to the cathode of the battery. The lithium battery charger acts as a pump, pumping current upstream, opposite the ???

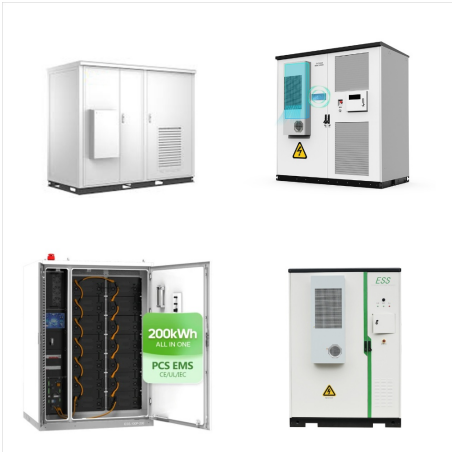


To charge your lithium-ion battery, simply connect it to the charger and plug it into an outlet. The process can take several hours, so it's best to do it overnight or while you're at ???



Lithium battery is a kind of consumable product, and its life span is fixed, so mastering the correct method of using lithium battery is the secret to extend the battery life. The above shows the correct way to charge the lithium battery for the first time, and the tutorial about the correct use of the lithium battery.

CHARGING LITHIUM BATTERIES FOR THE FIRST TIME



The real sweet spot for a battery is 50 percent charge as that means that half of its moveable lithium ions are in the lithium cobalt oxide layer and the other half are in the graphite layer.