



How do you charge a lithium battery in an RV?

While this works for lead-acid batteries, it's not ideal for lithium batteries, which prefer a consistent charging current. Shore Power - When you're connected to campground electricity (shore power), your RV's converter takes the incoming 120V AC and converts it to 12V DC to charge your batteries.

What is a lithium RV battery?

Lithium RV batteries, specifically LiFePO₄, are known for superior performance under various conditions compared to traditional lead-acid batteries. Lithium batteries perform well in high-temperature, around 140°F (60°C). However, extreme heat will deteriorate the battery's health over time.

Can a generator charge a lithium battery in an RV?

Like shore power, the generator's output goes through your RV's converter to charge the batteries. More than likely, your RV's converter isn't meant to charge lithium batteries. Solar Panels - Many RVs are equipped with solar panels or have the capability to add them.

Can a regular RV battery charger charge a dead lithium battery?

There's also a chance that the regular RV battery charger won't be able to charge a dead lithium battery since they require a higher voltage. This can be confusing for a regular battery charger. You may end up stuck at the campsite with no way to charge your lithium RV battery.

Are lithium batteries good for RV camping?

Lithium batteries have revolutionized the world of RV camping, offering longer life, faster charging, and improved performance compared to traditional lead-acid batteries. However, many RV enthusiasts find themselves wondering about the complications of charging these powerful energy sources using their RV's built-in charging system.

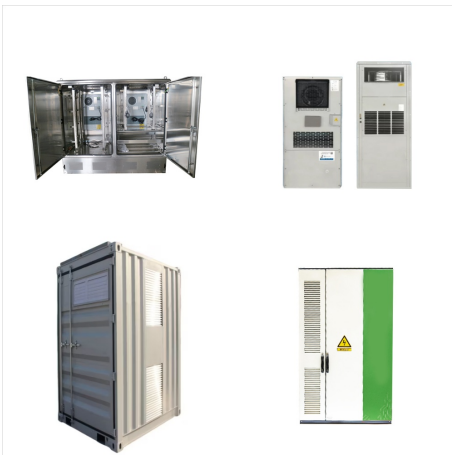
Can I charge a lithium RV battery with a solar panel?

Related Product: Charge your new lithium RV batteries with a Renogy Rover MPPT Solar Charge Controller with Solar Panels (click to view on Amazon) When choosing a lithium battery for your RV, get a 12-volt option to stay compatible with the 12 volt RV electrical system.

CHARGING LITHIUM RV BATTERIES **SOLAR**



Lithium batteries charge up to a higher voltage than lead-acid batteries. While lead acid charges up to 13.6V, lithium will charge to 14.6V (13.9-14.6V is considered "full"). If your charge controller is not programmable or does not have a "Lithium" or "Deep Cycle" setting, you may only be able to charge your new lithium battery to



Adhering to voltage requirements, temperature considerations, and lithium battery charging profiles are essential for safe and efficient charging of lithium batteries. but it requires the right equipment to protect both the battery and the charging system. In any system, such as an RV or boat where an alternator is present, you can use the



#3 Adding a battery monitor. While adding a lithium battery monitor with a shunt is optional, the video's expert highly recommends it. The reason is that in lithium batteries the voltage profile starts at a higher voltage than lead ???

CHARGING LITHIUM RV BATTERIES **SOLAR**



Lithium batteries, particularly LiFePO4 (Lithium Iron Phosphate), have become a popular choice for RV owners due to their efficiency, longevity, and lightweight nature. However, like any technology, they can encounter issues. This guide will help you troubleshoot common problems associated with RV lithium batteries, ensuring you can maintain optimal performance ???



There's a lot of talk about lithium RV batteries, and with good reason. RV lithium batteries are rechargeable 12-volt batteries that have become a popular alternative to lead-acid batteries, particularly for RVers who spend a lot of time off the grid and/or who use solar power. RV lithium batteries are based on a newer, more efficient lithium



Like most of the best lithium RV battery options, the ExpertPower battery comes with a built-in BMS that protects it from overcharging, overheating, short circuits, deep discharge, and excessive low self-discharge. One battery cycle is the entire process of storing, dispersing, and re-charging the battery again.

CHARGING LITHIUM RV BATTERIES **SOLAR**



1) How to Store Lithium RV Batteries for Winter 1.1) Charge the Battery 1.1.1) Never Charge Below 32°F / 0°C 1.1.2) Warm the Battery Before Charging 1.2) Disable the Heating Function 1.3) Disconnect From Any Load ???



How Do Lithium Batteries Charge in An RV? When you upgrade to lithium batteries in your RV, you'll have several options for charging them. One standard way to replenish them is by plugging your RV into an electrical outlet ???

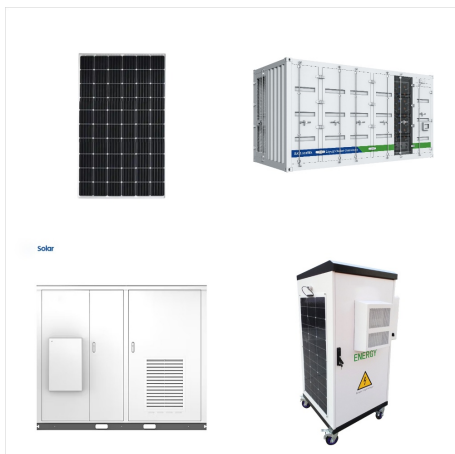


The proper charge cycle for the RV's house battery bank must be used, especially if they're Lithium. Those require a different charging profile than flooded lead-acid batteries do, which requires the system to be set up ???

CHARGING LITHIUM RV BATTERIES **SOLAR**



Check Price at Amazon. Main Features. 55A & 100A Output Options ??? Offers 55A option that's the standard power output ideal for most RV setups. 100A option for high power needs, large battery banks and fast charging lithium batteries.; All Battery Compatible ??? Designed specifically for use with lead-acid and LiFePO4 batteries.

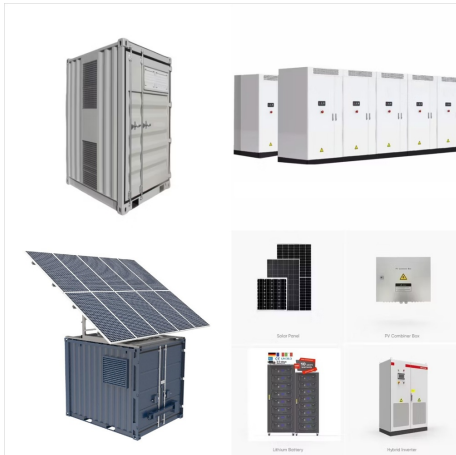


Before switching to lithium batteries, our lead-acid batteries lasted 7 years. We hope yours will last at least that long, too. How? Proper charging and maintenance. An RV battery charger will often be incorporated into the RV's "Power Center" module, complete with 120V circuit breakers, 12V fuses, and the battery charger itself.



When batteries charge, they tend to get pretty warm, and this is especially true in a battery bank with nowhere for the heat to go. To properly maintain your RV's lithium batteries, keep them clean, cool, and dry. Properly Cleaning Lithium Batteries. The good news is lithium batteries are the most resilient of the battery types available for

CHARGING LITHIUM RV BATTERIES



Charging lithium batteries from an alternator, be that in a boat or vehicle, presents some challenges when compared to the straightforward nature of charging lead based batteries. The video in this blog highlights these lithium challenges and shows you what can happen when things go wrong ??? namely alternator overheating, smoke and an expensive alternator [??]



Check out our helpful Lithium RV Battery Chart. Charging Your Lithium Battery. Our Ionic lithium RV batteries are plug-and-play. They don't require maintenance, so you could almost just connect them and forget them. ???



1) How to Store Lithium RV Batteries for Winter 1.1) Charge the Battery 1.1.1) Never Charge Below 32°F /0°C 1.1.2) Warm the Battery Before Charging 1.2) Disable the Heating Function 1.3) Disconnect From Any Load 1.4) Turn Off/Disable Charging 1.5) Store in a Dry, Temperate Location 1.6) Periodically Check the Battery State of Charge 2) Are Lithium RV ???

CHARGING LITHIUM RV BATTERIES **SOLAR**



RV Battery Charging from your Tow Vehicle is a popular and easy thing to do. You simply use the alternator on your tow vehicle to charge your RV's house batteries. It's already doing that for the chassis batteries, but most alternators have excess capacity to charge the RV's house batteries. You cannot charge lithium batteries at low



Charging lithium batteries with the proper RV charging system offers several significant advantages that can make your overall camping experience more comfortable. Faster Charging Times ??? One of the most notable benefits is the reduced charging time. Lithium batteries can accept a higher charge rate than lead-acid batteries, meaning they can



And while the original battery converter/charger in this RV is not technically rated for lithium, it can still do much of the charging for our upgraded batteries. The charging profile for the stock battery charger has a bulk ???

CHARGING LITHIUM RV BATTERIES **SOLAR**



The system completely replaces a traditional battery bank and electrical system with lithium batteries and a lithium-ready inverter/charger, battery monitor, and communication center. D&H RV selects the appropriate Battle Born lithium kit for each customer and camper, designs the fit, and performs the installation.



With its gentle charging method that protects batteries, trickle charging is an ideal way to charge and maintain the batteries that power an RV. Using a trickle charger provides multiple benefits to extend battery life, reduce maintenance, and keep batteries performing optimally even during long-term storage.



Regardless of whether trying to charge in a housing or RV park power source, trying to charge from a generator, or even in unconventional ways such as wind and solar charging, an RV lithium battery really can store energy from the wide range of sources that can assist you just on road.

CHARGING LITHIUM RV BATTERIES **SOLAR**



These so-called accelerated charging modes are based on the CCCV charging mode newly added a high-current CC or constant power charging process, so as to achieve the purpose of reducing the charging time Research has shown that the accelerated charging mode can effectively improve the charging efficiency of lithium-ion batteries, and at the



We build our lithium-ion RV batteries to perform better, last longer, and provide the deliverable power needed for weekend adventures or full-time boondocking. 5x Faster Charging. Charges up to five times faster.* 1/5th the Weight. Approximately 1/5 the weight for same amount of usable power.* Drop-In Replacement. Easy drop-in replacement



Discover 5 simple methods for charging an RV battery efficiently. Learn the fastest and safest ways to keep your RV powered during your travels. For RV lithium batteries, the charging temperature range is 0°C to 50°C (32°F to 122°F). Avoid charging below 32°F (0°C) or above 122°F (50°C), as extreme cold or heat can harm battery

CHARGING LITHIUM RV BATTERIES **SOLAR**



The proper charge cycle for the RV's house battery bank must be used, especially if they're Lithium. Those require a different charging profile than flooded lead-acid batteries do, which requires the system to be set up correctly for the different battery types.



A lithium RV battery can take much more punishment than lead acid, and usually last 2-4x longer (some have even reported lasting 10x longer). They can also discharge past 80% state of charge - lead acid batteries can only be discharged down to 50% before it does damage to the battery. Our lithium RV batteries are rated to last 5,000 cycles.



Learn more about charging your RV batteries with solar here. Fastest Way to Charge an RV Battery. What's the fastest way for your battery to get its power fix? Fix it up with a battery charger connected to shore power. But if you have a need for speed, the fastest charging battery you can buy for your RV is a LiFePO4 lithium battery.

CHARGING LITHIUM RV BATTERIES **SOLAR**



Safety Tips for Charging Your RV Battery. Charging your RV battery requires attention to safety to prevent damage or accidents. Here are key safety tips to follow: Use the Correct Charger. Always use a charger that matches ???



Lithium batteries charge much faster because they accept a very high charge current, with less resistance to charging. However, high-quality lithium RV batteries are designed to last much longer than traditional lead-acid batteries. A properly-maintained lithium RV battery can last up to 10 years or more. In fact, some manufacturers of



Charging an RV battery requires careful consideration of the battery type, with lithium and lead-acid batteries requiring different charging methods. Various types of chargers are available to suit specific needs, such as power converters, inverter chargers and ???