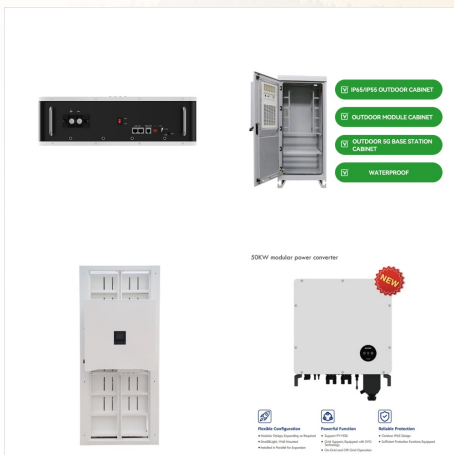




The Power Steering Warning Light on a Lexus RX 350 The power steering warning light on a Lexus RX 350 indicates a malfunction in the Electric Power Steering (EPS) system. When this light comes on, it is important to have the vehicle inspected by ???



Follow these steps to add power steering fluid to a 2007 Lexus RX350 3.5L V6. Difficulty steering is a common symptom for low power steering fluid level in a 2007 Lexus RX350 3.5L V6. About Us; In a few days, check the power steering fluid level in your RX350 to make sure you don't have a leak. If you notice the power steering fluid level

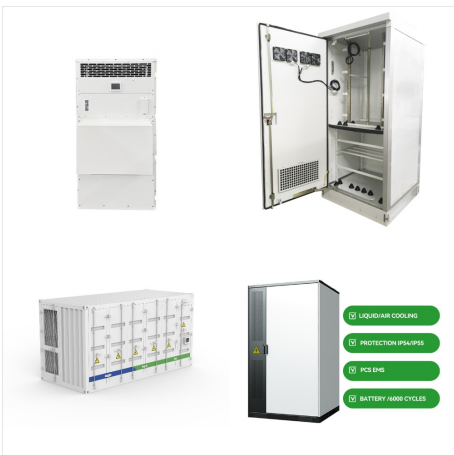


Once everything is in place you can start the engine and check for leaks. Power steering uses the principal of hydraulic pressure. This can put a lot of pressure on the hoses and wear out the rubber. Therefore it's essential that the power steering hoses of your 2022 Lexus RX 350 are checked regularly by a mechanic and replaced when required.

CHECK POWER STEERING SYSTEM LEXUS RX 350



Detailed explanation of how the AWD system works in the Lexus RX 350. The Lexus RX 350 boasts an advanced all-wheel drive (AWD) system that sets it apart from traditional two-wheel drive (2WD) vehicles, elevating its performance and overall capabilities on the road. This AWD system constantly sends engine power to all four wheels, not just two.

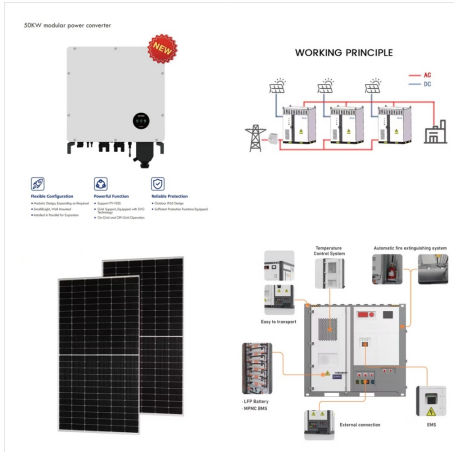


View and Download Lexus RX 350 service manual online. RX 350 automobile pdf manual download. Also for: Rx 450h. CHECK HYBRID SYSTEM POWER CONTROL UNIT COOLANT LEVEL Visually check the coolant level through the coolant reservoir tank when the hybrid system is cool. INSPECTION DETAILS - F. Road Test F10. CHECK STEERING OPERATION ???



Power Steering Pump Replacement Service How much does a Power Steering Pump Replacement cost? On average, the cost for a Lexus RX350 Power Steering Pump Replacement is \$525 with \$343 for parts and \$182 for labor. Prices may vary depending on your location.

CHECK POWER STEERING SYSTEM LEXUS RX 350



Lexus RX 350 2016 automobile pdf manual download. Also for: Lexus rx 450h 2016. Power easy access system Check that the steering wheel and driver seat automatically adjust to allow the driver to enter and exit the vehicle easily. indicator lamp ??? SRS airbag warning light ??? ABS warning light ??? Brake hold operated indicator light



Manual Lexus RX 350 (2024). View the Lexus RX 350 (2024) manual for free or ask your question to other Lexus RX 350 (2024) owners. The infotainment system in the Lexus RX 350 includes a large touchscreen display that provides easy access to various multimedia functions. it will not receive any power. Check that the red wire is connected



Figure 7. Power steering reservoir on the left side of the engine. Power steering fluid powers the hydraulic steering system, cools it and holds in suspension dirt and debris. Motoring experts advice that the Lexus" power steering fluid be replaced at between 30,000 to 60,000 miles. The Power steering system in your Lexus is also compromised

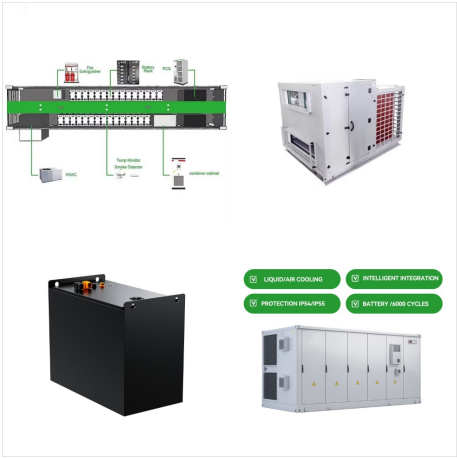
CHECK POWER STEERING SYSTEM LEXUS RX 350



Check Power Steering Level: 2014 Lexus RX350 3.5L V6 Base 3.5L V6. Our research indicates that your vehicle has an electric power steering system ("EPS" or "EPAS"). These systems ???



Research the 2025 Lexus RX 350 in Allentown, PA at Lexus of Lehigh Valley. View pictures, specs, and pricing & schedule a test drive today. *Please Note: We turn our inventory daily, please check with the dealer to confirm vehicle availability. MSRP + DPH: \$54,600 Power steering; Power windows; Radio data system; Rain sensing wipers



Browse RELAY, ELECTRIC POWER STEERING for your Lexus RX 350 . Return Home Select New Vehicle. Select a Lexus RX 350 Year Search By VIN (Vehicle Identification Number) 2024. 2023. 2022. 2021. 2020. 2019. 2018. 2017. 2016. 2015. 2014. 2013. 2012. 2011. 2010. 2009. 2008. 2007 {{TotalCount}} Parts fit your

CHECK POWER STEERING SYSTEM LEXUS RX 350



The system is pressurised by the power steering pump and by way of valves, plungers, or pistons decreases the effort needed by the driver to turn the steering wheel. When the pump stops pumping, the pressure drops and the power steering system loses its hydraulic pressure.



Why does the power steering system of your RX 350 need fluids? Steering fluids pass on the force necessary to make the steering system turn. This force is created by the pump of the power steering system. You should always have the recommended fluid level because if the level is low, the pump may get damaged.



Lexus RX350 3.5L V6 does not have a power steering fluid reservoir because it is an electric power steering system. About Us; Maintenance; Parts & Tools; Contact; English Spanish French. Search. How to Add Power Steering Fluid to a 2016 Lexus RX350 3.5L V6 Base 3.5L V6. Our research indicates that your vehicle has an electric power

CHECK POWER STEERING SYSTEM LEXUS RX 350



Check Power Steering Level: 2016 Lexus RX350 3.5L V6 Base 3.5L V6. Our research indicates that your vehicle has an electric power steering system ("EPS" or "EPAS"). These systems use an electric motor instead of a hydraulic system and therefore do not have any power steering fluid to leak. Electric power steering typically require less



What power steering fluid does your Lexus need? The power steering fluid is usually the ATF type, and we can identify it by its red color. Since a few years ago, however, manufacturers use fluids that are specific for each car. To find the ideal power steering fluid for your car in the owner's manual, [click here](#).



The standard electric power steering system contributes to agility and better steering feel while eliminating the parasitic losses of a hydraulic steering pump. Eliminating hydraulic oil also provides an environmental benefit and reduces maintenance. The Lexus RX 350 also offers a telematics system, Lexus Enform(R) with Safety Connect

CHECK POWER STEERING SYSTEM LEXUS RX 350



How to change the power steering fluid of your RX 350? In short: Changing the power steering fluid is easy. To do so, you must make sure that your car is cold and its engine is off. Take into account that you should replace it only if there is a problem with the power steering system: for example, if it is making weird noises or it is hard to turn your car's wheels.



The power steering fluid should be replaced only as needed based on visual inspection by a technician. What type of power steering fluid is used in Lexus vehicles? My vehicle has an automatic transmission and there is no dipstick to check the transmission fluid level. How do I ???



COMPUTER ASSY, POWER STEERING . Fits RX 350 (2013 - 2015) Power Steering Control Module - Repair or Replace If your electric steering is suddenly stiff or heavy, the problem may lie within your power steering control module. Let our technicians inspect and replace the power steering control module in your Lexus RX 350.

CHECK POWER STEERING SYSTEM LEXUS RX 350



Check Power Steering Level: 2019 Lexus RX350 3.5L V6 Base 3.5L V6. Our research indicates that your vehicle has an electric power steering system ("EPS" or "EPAS"). These systems use an electric motor instead of a hydraulic system and therefore do not have any power steering fluid to leak. Electric power steering typically require less



Check Power Steering Level: 2010 Lexus RX350 3.5L V6 Base 3.5L V6. Our research indicates that your vehicle has an electric power steering system ("EPS" or "EPAS"). These systems ???



Seeing the "Check AWD system" light on your Lexus RX 350 dash can be alarming. This article demystifies what that warning light means, offering essential insights for any RX 350 driver. Uncover the reasons behind the alert and the steps you should take next, ensuring your vehicle remains in peak condition.

CHECK POWER STEERING SYSTEM LEXUS RX 350



Add power steering fluid to the power steering container if the fluid level is between the MAX and MIN mark. Reinstall the cap and observe within a few days to ensure no leaks. If the vehicle requires power steering fluid regularly, there may be a power steering leak. Have the vehicle diagnosed by a mechanic if necessary.



COMPUTER, STEERING CONTROL . Fits LX 570
Power Steering Control Module - Repair or Replace
If your electric steering is suddenly stiff or heavy, the problem may lie within your power steering control module. Let our technicians inspect and replace the power steering control module in your 2015 Lexus RX 350.



Lexus RX330 / RX350 / RX400h ; Power Steering Failure Power Steering Failure. By flybones
February 26, Lexus Model: 2006 IS 350; Share;
Posted March 19, 2008. Check Hybrid System, Check VSC, Check AWD, BREAK, ABS, TRAC LIGHT.