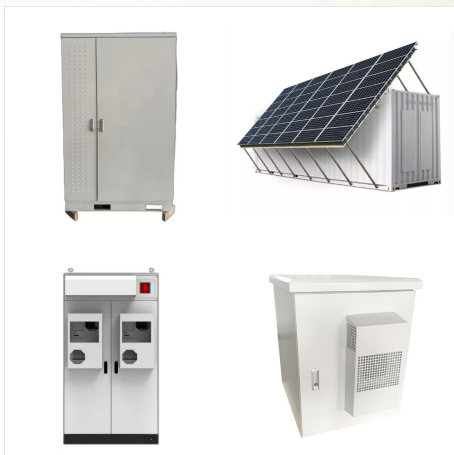




Guaranteed to meet or exceed Chicago Electric Power Systems Jump Starter 5-in-1 Portable Power Pack (96157) Battery specifications and performance. All Batteries are 90% charged when shipped. For most applications, we recommend you complete charging before use. Back Up Systems automatically bring the batteries to complete charge.



Tempest Power Security battery is a Valve Regulated, Sealed Lead Acid Battery. Chicago Electric 39954 3-in-1 Jump Starter with Air Compressor Replacement Battery \$34.00 Chicago Electric 39954 3-in-1 Jump Starter with Air Compressor Battery Dimensions: Length 7.13", Width 3.03", Height 6.57" (Total Height 6.57"), F3 terminals (Terminal



Jump Starter and Air Compressor. The Farm and Ranch FR01240 jump starter provides premium portable power for jump starting, charging mobile electronics, and other emergency needs. The FR01240 offers several features to enhance convenience, such as a 2A USB port, a 12V accessory outlet, and a built-in air compressor that can provide up to 150 psi.

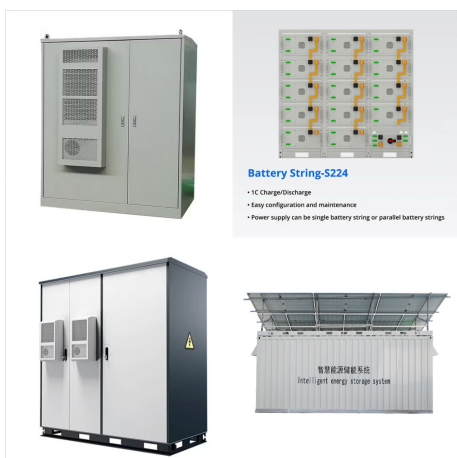
CHICAGO ELECTRIC POWER SYSTEMS 3-IN-1 JUMP STARTER WITH AIR COMPRESSOR



View and Download Chicago Electric 38391 set up and operating instructions manual online. 12 volt Jump-start and power supply. CHICAGO ELECTRIC 38391 power supply pdf manual download. Remote Starter Chicago Electric 38391 ???



Compatible with: Chicago Electric Model 38391 12 Volt Jump-start Jump Starter Power Systems 3 in 1 Jump Start Air Compressor 08884 Harbor Freight Tools Jumpstarter ; Compatible with: CEN TECH Portable Power Pack Jump Starter ITEM 60657 ???



Air Compressor; 39954; Chicago Electric 39954 Manuals Manuals and User Guides for Chicago Electric 39954. We have 1 Chicago Electric 39954 manual available for free PDF download: Set Up And Operating Instructions Manual Jump Starting. 4. Compressor Operation. 5. Maintenance. 6. Battery Replacement. 6.

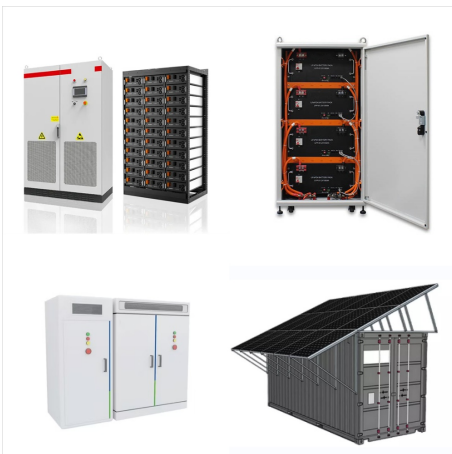
CHICAGO ELECTRIC POWER SYSTEMS 3-IN-1 JUMP STARTER WITH AIR COMPRESSOR



Product Description. This Raion Power RG12180FP jump starter battery pack is a compatible replacement for your existing Chicago Electric 08884 3-in-1 Jump Starter batteries (12V 18Ah).Raion Power RG12180FP (12V 18Ah) rechargeable battery pack is guaranteed to meet or exceed OEM specifications. We assure 100% compatibility with your existing Chicago Electric ???



Buy Schumacher Electric Jump Starter and Portable Power Station 4-in-1 with 150 PSI Air Compressor and Work Light, SPR1630-750 Peak Amps, 12 Volt, for Cars, Trucks, RV's and Marine Batteries: Jump Starters - Amazon FREE DELIVERY possible on eligible purchases Our payment security system encrypts your information during transmission. We



About this item . Tested Units. In Great Working Condition. UpBright 30 Days Refund. 24 Months Exchange. UpBright New Car 12V DC Adapter Compatible with Harbor Freight Tools Chicago Electric Power System Item 96157 CEN TECH 60703 5 IN 1 CENTECH 60657 Portable Power Pack Jump Starter 38391 12 Volt 08884 69401 60657 Auto Vehicle Boat RV ???

CHICAGO ELECTRIC POWER SYSTEMS 3-IN-1 JUMP STARTER WITH AIR COMPRESSOR



Find many great new & used options and get the best deals for Chicago Electric 96157 Car Jump Starter 600 Amp Air Compressor Ac/dc Inverter at the best online prices at eBay! Free shipping for many products! item 3 AC Adapter Car Cord Fr Battery Jump Starter Air Compressor 600 700 1000 Peak Amp AC Adapter Car item 8 AC Adapter for Guide



PPJ AC IN Power Charging Cord Outlet Socket Charger Cable Plug For Chicago Electric Power Tools 3 in 1 Jumpstart / Air Compressor Item # 39954 Jump Starter ??? See more product details Report an issue with this product or seller



Buy Schumacher Electric Jump Starter and Portable Power Station 6-in-1, SJ1332 with 150-PSI Air Compressor and 200 Continuous/400 Peak Watt Power Inverter, 1200 Peak Amps, 12 Volts, Black, 1 unit: Jump Starters - Amazon FREE DELIVERY possible on eligible purchases Our payment security system encrypts your information during transmission

CHICAGO ELECTRIC POWER SYSTEMS 3-IN-1 JUMP STARTER WITH AIR COMPRESSOR



The Schumacher 1000 Peak Amp Portable Power Jump Starter with Air Compressor will work with Cell phone, fluorescent light 4W 34 hrs Radio, fan, depth finder 9W 14 hrs Camcorder 15W 7 hrs Electrical tool 24 W 5 hrs Electric cooler 48 W 2 hours Car vacuum and has an air compressor 80 W 1.8 hrs.



UpBright 2-Prong AC in Power Charging Cord
Charger Cable Compatible with Chicago Electric
38391 12 Volt Jump-Start Jump Starter Harbor
Freight Tools 39954 40615 1200 650 Amp Peak 3 in
1 Air Compressor



Jump starter with 12V power, USB, and air
compressor Made for premium jump starting and
emergency power, Schumacher's SJ1330 provides
up to 1000 peak amps to jump start cars reliably
when needed. It includes a 12V power and USB
port in addition to a 150-psi air compressor for
inflating and deflating tires, mattresses, pool rafts, or
sports

CHICAGO ELECTRIC POWER SYSTEMS 3-IN-1 JUMP STARTER WITH AIR COMPRESSOR



The Schumacher Pro 1200 Peak Amp Power Station, jump starter, power supply, air compressor, and vehicle jump starter looks impressive. It has valuable features: 120 v AC power supply plugin, 12 v DC powerport, 100 PSI digital air compressor, 4 Port USB hub, flexible LED flashlight, and jump starting cables. It's definitely not compact.

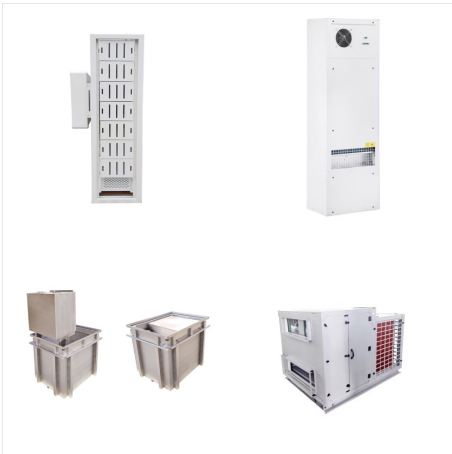


CHICAGO ELECTRIC POWER SYSTEMS 3-IN-1 JUMP STARTER WITH AIR COMPRESSOR ((see pics for specs)) Works great !! Had car cigarette charger not pictured If your thinking of making me 1/2 price offer) ((don't) I won't respond ! (I do not except payment through the app) I don't ship - I don't hold items - so please don't bid if you don't have time to meet up by the next ???



Buy Schumacher Electric Jump Starter and Portable Power Station 6-in-1, SJ1332 with 150-PSI Air Compressor and 200 Continuous/400 Peak Watt Power Inverter, 1200 Peak Amps, 12 Volts, Black, 1 unit: Jump Starters - Amazon FREE ???

CHICAGO ELECTRIC POWER SYSTEMS 3-IN-1 JUMP STARTER WITH AIR COMPRESSOR



fits: Chicago Electric Model 38391 12 Volt
Jump-start Jump Starter Power Systems 3 in 1
Jump Start Air Compressor 08884 Harbor Freight
Tools Jumpstarter; Chicago Electric Power Tools
Model 96299 96298 Lithium Powered 10.8V 10.8
Volt 10.8 Volts 10.8V DC ???



Battery Charging Systems / Jump Starters. Jump
Starters. DEWALT. Schumacher Electric. AC. AC or
DC. Work Light. 150 PSI 2,500 Amp Ultra
Multi-function 4-in-1 Jump Starter, Air Compressor,
Flashlight, and Portable Charger Was \$232.00.
Save \$28.00 (12%) Add to Cart. Top Rated.
Schumacher Electric . 1000 Peak Amp Portable
Power and Jump



12V AC/DC Adapter Compatible with Harbor Freight
Tools Chicago Electric Power Pack System Item
96157 CEN TECH 60703 5 in 1 CENTECH 38391
56349 60657 60666 64083 69401 Car Jump Starter
Charger AC in Charging Cord Charger Cable
Compatible with CenTech 4-in-1 Jump Starter Air
Compressor Item# 62453 62374 56631 Portable
Power Pack 348985 Jump

CHICAGO ELECTRIC POWER SYSTEMS 3-IN-1 JUMP STARTER WITH AIR COMPRESSOR



Portable Car Jump Starter with Air Compressor, TREKURE 150PSI 3000A Car Battery Jump Starter Battery Pack (9L Gas/8L Diesel), Safe Car Jumper Starter Portable Jump Box with Display, Emergency Light Dynamic Power 16-PC. Air Compressor Accessory Kit with 3/8" x 15 ft Coil Air Hose. 4.4 out of 5 stars. 88. Security Systems eero WiFi Stream



Guaranteed to meet or exceed Chicago Electric 08884 3-in-1 Jump Starter with Air Compressor Battery specifications and performance. All Batteries are 90% charged when shipped. For ???



Remote Starter Chicago Electric 91045 Assembly And Operating Instructions Manual. Multi-function jump starter (16 pages) Summary of Contents for Chicago Electric 38391. Page 1 12 volt Jump-start and power supply 38391 set up and operating Bilge Pump Electric Cooler Air Compressor, Vacuum Figure 3 Charge the unit for the minimal time

CHICAGO ELECTRIC POWER SYSTEMS 3-IN-1 JUMP STARTER WITH AIR COMPRESSOR



REV 07c For technical questions, please call 1-800-444-3353. SKU 40615 Page 4 Page 5 (16). This will show the level of battery power on the Volt Meter (17). This Jump-start System is equipped with an automatic shut off so you cannot overcharge the battery. REV 09d, 09j For technical questions, please call 1-800-444-3353. SKU 40615 Page 5