



UpBright New 2-Prong Connector AC IN Charging Power Cord Charger Charge Cable Outlet Socket Plug Lead Compatible with Chicago Electric Model 38391 12 Volt Jump-start Jump Starter Harbor Freight Tools (Note: This is an AC power cord ONLY!) !!!Note: Rechargeable batteries don't last forever, the average battery last 1 to 3 years.



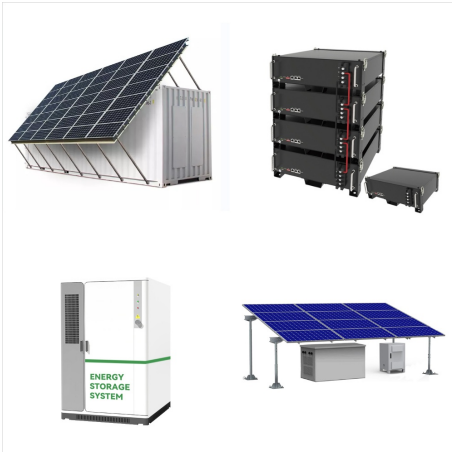
fits: Chicago Electric Model 38391 12 Volt Jump-start Jump Starter Power Systems 3 in 1 Jump Start Air Compressor 08884 Harbor Freight Tools Jumpstarter; Chicago Electric Power Tools Model 96299 96298 Lithium Powered 10.8V 10.8 Volt 10.8 Volts 10.8V DC ???



REV 07c For technical questions, please call 1-800-444-3353. SKU 40615 Page 4 Page 5 (16). This will show the level of battery power on the Volt Meter (17). This Jump-start System is equipped with an automatic shut off so you cannot overcharge the battery. REV 09d, 09j For technical questions, please call 1-800-444-3353. SKU 40615 Page 5



# CHICAGO ELECTRIC POWER SYSTEMS 3 IN 1 JUMP STARTER



Tempest Power Security battery is a Valve Regulated, Sealed Lead Acid Battery. SLA batteries for UPS Systems, UPS Replacement Batteries, UPS batteries, Burglar and Fire Alarm Systems, Office Machines, Computers, Cash Registers, Solar Power Devices, Telecommunications, UPS Equipment, Emergency Lighting Chicago Electric 08884 3-in-1 Jump



Raion Power 12V 18Ah battery with FP terminals is a direct replacement for Chicago Electric 08884 3-in-1 Jump Starter battery. Rugged non-conductive ABS plastic casing has a strong resistance to shock, vibration, chemicals, and heat.



Product Description. This Raion Power RG12180FP jump starter battery pack is a compatible replacement for your existing Chicago Electric 96157 5-in-1 Jumpstarter batteries (12V 18Ah).Raion Power RG12180FP (12V 18Ah) rechargeable battery pack is guaranteed to meet or exceed OEM specifications. We assure 100% compatibility with your existing Chicago Electric ???



# CHICAGO ELECTRIC POWER SYSTEMS 3 IN 1 JUMP STARTER



Product Description. This Raion Power RG12180FP jump starter battery pack is a compatible replacement for your existing Chicago Electric 40615 Jump Starter batteries (12V 18Ah). Raion Power RG12180FP (12V 18Ah) rechargeable battery pack is guaranteed to meet or exceed OEM specifications. We assure 100% compatibility with your existing Chicago Electric 40615 Jump ???



View and Download Chicago Electric 3418 assembly and operating instructions manual online. BATTERY CHARGER/STARTER. 3418 battery charger pdf manual download. Power Requirements. Preparing the Battery. Stop ???



Buy your Raion Power replacement sealed lead acid battery for your Chicago Electric jump starter systems. Raion Power batteries are factory direct, factory fresh, & U.L. Certified. Welcome to the #1 Online Parts Store!



# CHICAGO ELECTRIC POWER SYSTEMS 3 IN 1 JUMP STARTER



Delivering power when you need it, the MIGHTY MAX ML18-12 12-Volt 18 Ah uses a state of the art, heavy-duty, calcium-alloy grid that provides exceptional performance and service life in both float and 12V 18AH Battery Replaces Chicago Electric 38391 Jump Starter. ATV, Access Control Devices, Alarm System, Boat, Consumer Electronics



Find many great new & used options and get the best deals for Chicago Electric Power Systems 6V / 12V Battery Charger/Engine Starter 03418 at the best online prices at eBay! Free shipping for many products! 12V Chargers & Jump Starters, Battery 12V Vehicle Power Tools, Snap-on Battery 12V Vehicle Power Tools,



Page 4: Charging The Power Pack 12 Volts should be charged immediately. Turn the Jump-start Power Switch (18) on the back of the unit to the "OFF" position. For technical questions, please call 1-800-444-3353. SKU 96157 Do not use this system in the place of a vehicle battery. sERVICE uNPACKING Page 5: Jump-Starting



# CHICAGO ELECTRIC POWER SYSTEMS 3 IN 1 JUMP STARTER



Buy AC Adapter Compatible with Chicago Electric Model 38391 12 Volt Jump Starter 12V DC Power Systems 3 in 1 Jump Start Air Compressor 08884 Harbor Freight Tools Power Supply Battery Charger PSU: AC Adapters - Amazon FREE DELIVERY possible on eligible purchases



volt Jump-start and power supply 38391 set up and operating instructions note: after purchase and before initial use of the Jump-start, fully charge the Jump- start battery until the dc charging led turns off. after each jump start, fully recharge the; Page 2: Specifications The handles in damp or wet locations. Don't must be kept clean, dry, and free from expose to rain.



Product Description. This Raion Power RG12180FP jump starter battery pack is a compatible replacement for your existing Chicago Electric 08884 3-in-1 Jump Starter batteries (12V 18Ah).Raion Power RG12180FP (12V 18Ah) rechargeable battery pack is guaranteed to meet or exceed OEM specifications. We assure 100% compatibility with your existing Chicago Electric ???



# CHICAGO ELECTRIC POWER SYSTEMS 3 IN 1 JUMP STARTER



Compatibility: AC Adapter DC Charger For Chicago Electric Power System Jump Starter ITEM 96157 ;  
Note: please make sure the model of your device before buying Report an issue with this product or seller. You might also like. Page 1 of 1 Start over  
Page 1 of 1 . ???



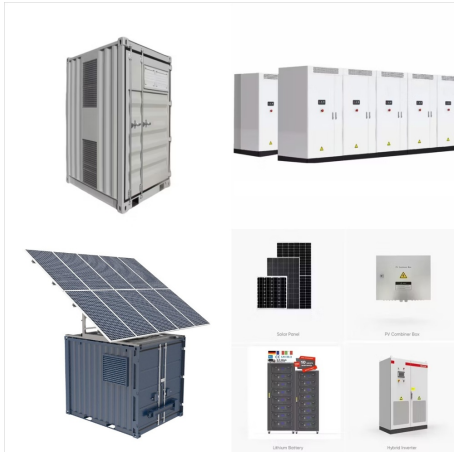
Product Description. This Raion Power RG12180FP jump starter battery pack is a compatible replacement for your existing Chicago Electric 08884 3-in-1 Jump Starter batteries (12V 18Ah). Raion Power RG12180FP (12V 18Ah) rechargeable battery pack is guaranteed to meet or exceed OEM specifications. We assure 100% compatibility with your existing Chicago Electric ???



About this item . Tested Units. In Great Working Condition. UpBright 30 Days Refund. 24 Months Exchange. UpBright New Car 12V DC Adapter Compatible with Harbor Freight Tools Chicago Electric Power System Item 96157 CEN TECH 60703 5 IN 1 CENTECH 60657 Portable Power Pack Jump Starter 38391 12 Volt 08884 69401 60657 Auto Vehicle Boat RV ???



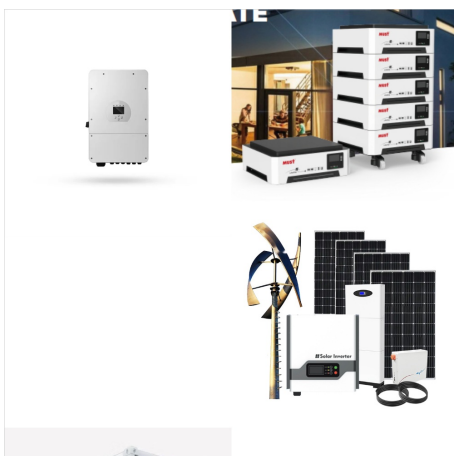
# CHICAGO ELECTRIC POWER SYSTEMS 3 IN 1 JUMP STARTER



Buy 12V AC/DC Adapter Compatible with Harbor Freight Tools Chicago Electric Power Pack System Item 96157 CEN TECH 60703 5 in 1 CENTECH 38391 56349 60657 60666 64083 69401 Car Jump Starter Charger: Jump Starters - Amazon FREE DELIVERY possible on eligible purchases Chicago Electric Model 38391 12 Volt Jump-start Jump Starter Power



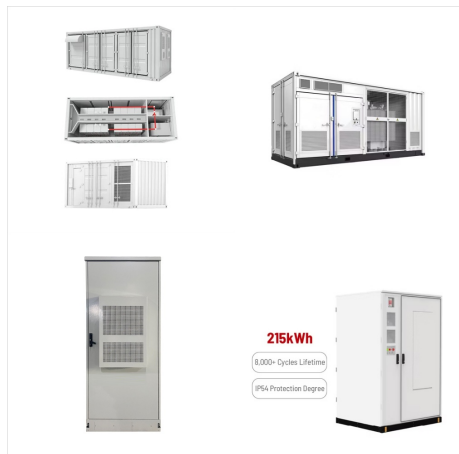
Buy PK Power AC/DC Adapter for Chicago Electric Model 38391 12 Volt Jump-Start Jump Starter Harbor Freight Tools Power Supply Cord Cable PS Wall Home Battery Charger Mains PSU: Our payment security system encrypts your information during transmission. We don't share your credit card details with third-party sellers, and we don't sell



Our payment security system encrypts your information during transmission. UpBright 2-Prong AC in Power Charging Cord Charger Cable Compatible with Chicago Electric 38391 12 Volt Jump-Start Jump Starter Harbor Freight Tools 39954 40615 1200 650 Amp Peak 3 in 1 Air Compressor Power Charging Cord Cable Plug Lead Replacement for ???



# CHICAGO ELECTRIC POWER SYSTEMS 3 IN 1 JUMP STARTER



AC Adapter for Chicago Electric Power Systems 3 in 1 Jump Start 08884 Power PSU. Add \$ 11 99.  
KONKIN BOO Compatible AC Adapter  
Replacement for Chicago Electric Power Systems 3 in 1 Jump Start 08884 Power PSU. AC Adapter  
Charger For Chicago Electric Power Tools 5-in-1 Portable Power Pack. Add



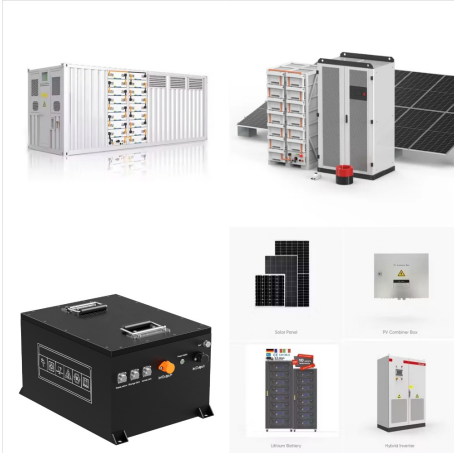
PPJ AC IN Power Charging Cord Outlet Socket  
Charger Cable Plug For Chicago Electric Power Tools 3 in 1 Jumpstart / Air Compressor Item # 39954 Jump Starter ??? See more product details  
Report an issue with this product or seller



About this item . Tested Units. In Great Working Condition. UpBright 30 Days Refund. 24 Months Exchange. UpBright New Car 12V DC Adapter Compatible with Harbor Freight Tools Chicago Electric Power System ???



# CHICAGO ELECTRIC POWER SYSTEMS 3 IN 1 JUMP STARTER



TR18-12 Tempest AGM, Valve Regulated, Maintenance Free, Sealed Lead Acid Rechargeable Chicago Electric 96157 5-in-1 Jump Starter Battery - 12V 18Ah (20 hour rate) You may also use the batteries listed below for the Chicago Electric 96157 5-in-1 Jump Starter Battery. TR22-12F3 22% longer run time



10. As soon as possible, recharge your Jump Start System. To use your Jump Start System to power appliances: 1. Lift up the cover of the Cigarette Lighter Receptacle (18). 2. Insert the cigarette lighter Plug from the appliance into the Cigarette Lighter Receptacle (18). 3. Turn the Safety Switch to the ON position to energize clamps and