

What is Chilicon Power?

Chilicon Power is a private company based in Southern California that is dedicated to building the world's most technologically advanced solar systems and providing excellent customer service. They are a certified and factory-trained Enphase and Generac installer.

Why did Generac acquire Chilicon Power?

Generac, a leading power brand serving the residential energy industry, acquired Chilicon Power in 2021. This acquisition helps solidify Chilicon's presence in the solar microinverter market. For customers, the deal heavily legitimizes the business and its products.

Is Chilicon Power's inverter 100% American made?

Chilicon Power is the only 100% American made inverter. It has been growing rapidly over the past four years (1000% plus) as installers and homeowners have become aware of our superior product. We've recently launched the groundbreaking CP-720, the most powerful microinverter available.

Does Chilicon offer a warranty on a microinverter?

Chilicon offers a 25-year warranty for their microinverters, which starts from the product's date of purchase. To participate in the warranty program, the microinverter must be connected to the company's cloud system using the CP-100 gateway.

Does Chilicon offer a warranty?

Chilicon's warranty starts from the product's date of purchase. To participate in the warranty program, the microinverter must be connected to the company's cloud system using the CP-100 gateway. This warranty is for the original owner of the equipment at the original location.

Is the Chilicon gateway secure?

This Chilicon gateway is highly secure due to encryption, proprietary protection from virus attacks, and automatic firmware updates. It is a product designed for large solar installations with many microinverters, where close monitoring of power conversion and flow along the system is necessary.



The Chilicon Power CP-720-dBC microinverter stands out as one of the top models in the market, delivering a consistent 720 watts of AC power. This allows compatibility with multiple solar panel configurations such as 60 ???



Chilicon Power CP-250E inverter performance leads the industry with sustained power production of 289 watts AC which provides well scaled output power compatibility for 60-cell and 72-cell modules up to 350W DC STC. The CP-250E has extended input voltage range and supports 72-cell (CP-250E) modules.



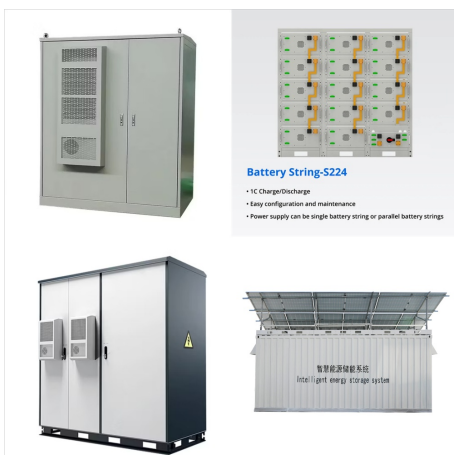
Chilicon's power inversion and monitoring system technology maximizes PV system production, lowers installer operational cost, and promotes end-user satisfaction. ??? Our Microinverters and Gateway are designed and manufactured in California. ???



Overall, Chilicon Power offers one of the most promising lines of microinverters for residential solar on the market today, and the company's flagship microinverters can match the performance of market-leading Enphase ???



All of Chilicon Power Microinverters enable innovative levels of intelligence and connectivity to your solar array by integrating with advanced networking technology and web-based software. Chilicon provides complete energy generation and control systems for ???



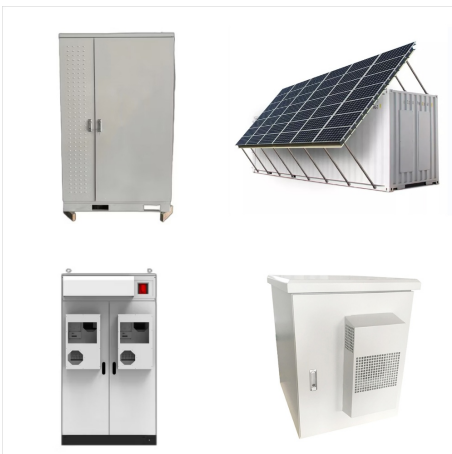
Overall, Chilicon Power offers one of the most promising lines of microinverters for residential solar on the market today, and the company's flagship microinverters can match the performance of market-leading Enphase microinverters.



Chilicon Power manufactures microinverters for 60,72, and 96 cell (CP-720) PV modules, along with complete energy generation and control systems for residential and commercial buildings. The GATEWAY is a monitoring system communicating with the inverters in your array that can be cloud interconnected or can run stand-alone.



Chilicon Power inverters feature Integrated (DC isolated) Ground. Because the DC circuit is isolated and insulated from ground, these microinverters do not require a Grounding Electrode Conductor (GEC) connected between each microinverter.



The Chilicon Power CP-720-dBC microinverter stands out as one of the top models in the market, delivering a consistent 720 watts of AC power. This allows compatibility with multiple solar panel configurations such as 60-cell, 72-cell, 96-cell, and 128-cell setups, handling a peak input of 860 watts of DC power.



Chilicon Power CP-720 inverter performance leads the industry with sustained power production of 720 watts AC which provides well scaled output power compatibility for 60-cell (series), 72-cell (series), 96-cell (parallel), or 128-cell ???



Chilicon Power CP-720 inverter performance leads the industry with sustained power production of 720 watts AC which provides well scaled output power compatibility for 60-cell (series), 72-cell (series), 96-cell (parallel), or 128-cell (parallel) modules up to 860W DC.