

What is a chins 100Ah smart lithium battery?

The CHINS 100AH Smart 12.8V LiFePO₄ Lithium Battery has built-in BMS (Battery Management System) to protect it from overcharge, over-discharge, over-current, and short circuit with excellent self-discharge rate. The CHINS 100AH Smart 12.8V LiFePO₄ Lithium Battery built-in high temperature cut off prevents charging over 122 °F (50 °C).

Are Chin batteries bad?

Over the last 2 years or so I've installed over \$20k worth of lithium batteries, many of which are Chins. The early ones had 0 issues from my experience. The newer ones, most specifically the ones with the heater and Bluetooth BMS are the most problematic. Issue #1, they are shipping these batteries without the cells being top balanced.

Can chins swap batteries?

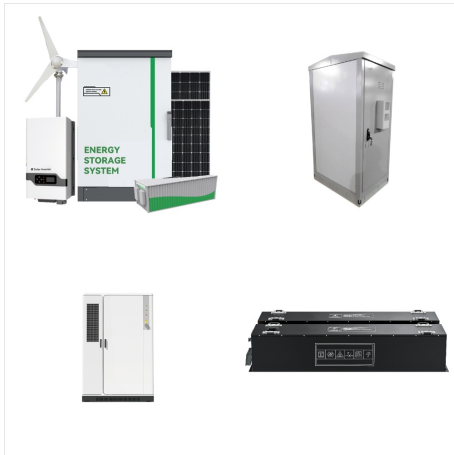
Chins did agree to swap the one battery but also told me to charge it at a very low rate for 24hrs to allow the BMS to do the balancing. I charged both batteries in parallel at about 1amp for a few days.

What is the difference between chins battery and traditional battery monitor?

Brand: CHINS, Size: 12.95x6.77x8.43 inches, Color: Black, Orange. ?Bluetooth Function?: Compared with the traditional battery monitor, CHINS Bluetooth lithium battery has added Bluetooth function and obtain various data (SOC) of the lithium iron phosphate battery.

What makes chins a good battery company?

CHINS's factory is equipped with the most advanced R&D team and equipment, and has passed UL, CE, RoHS, WEEE and PSE quality system certification. With 20 years of battery expertise, CHINS has always contributed to a green life, we firmly believe that "Green Leads Life".



Buy LiTime 12V 300Ah LiFePO4 Battery, 200A BMS Rechargeable Lithium Battery with Up to 15000 Cycles, 3840Wh -Higher Energy Density, Perfect for Off-Grid, RV, Solar, Motorhome and Boats.: Batteries - Amazon FREE DELIVERY possible on eligible purchases Litime 12V 400Ah LiFePO4 Lithium Battery 3200W Max. Load Power Group 8D Battery Built



CHINS Bluetooth LiFePO4 Battery, 48V 100Ah Smart Lithium Battery | Includes 48V 10A Lithium Battery Charger | Peak Current 500A, Perfect for Golf Cart, Trolling Motor, Marine, RV etc. dummy CHINS Bluetooth LiFePO4 Battery Smart 48V 100AH Lithium Battery Perfect for Golf Cart, Trolling Motor, Marine, Peak Current 500A, Mobile Phone APP Monitors



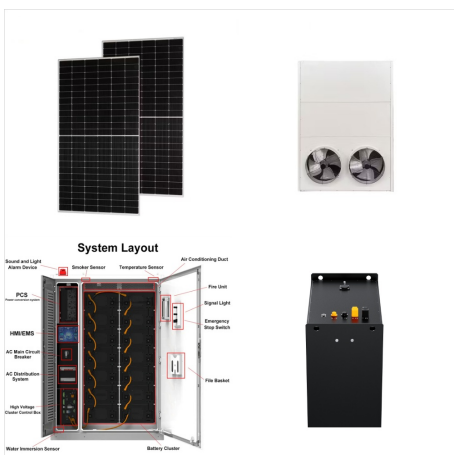
CHINS Bluetooth Smart LiFePO4 12V 400Ah Lithium Iron Battery 200A BMS for Home Energy Storage (5.0) 5 stars out of 1 review 1 review. USD Now \$1,069.99. You save. \$130.00. was \$1,199.99 \$ CHINS lithium battery has added Bluetooth function and can obtain various data (SOC) of the lithium iron phosphate battery. Customers can connect to the



CHINS 12V 290Ah (BMS:200A) LiFePO4 battery
 Product specifications: ?>>? Rated Capacity (0.2C):
 290Ah / 3712Wh Rated voltage: 12.8V Operating
 temperatures: Charge temperatures:
 -20°C~50°C(-4°F~122°F) Discharge
 temperatures: -20°C~60°C(-4°F~140°F) Storage
 temperatures: -20°C~50°C(-4°F~122°F) Charge
 voltage: 14.2V~14.6V Max Depth of ???



Look no further than the Casil 12V 400Ah LiFePO4
 Battery. This lithium solar battery backup offers a
 whopping 4000+ cycles, compared to the 300-500
 cycles of traditional lead acid batteries, ensuring a
 longer service life and lower average cost of use.
 CHINS 12V 400Ah Bluetooth LiFePO4 Battery
 Review. Recent Posts.



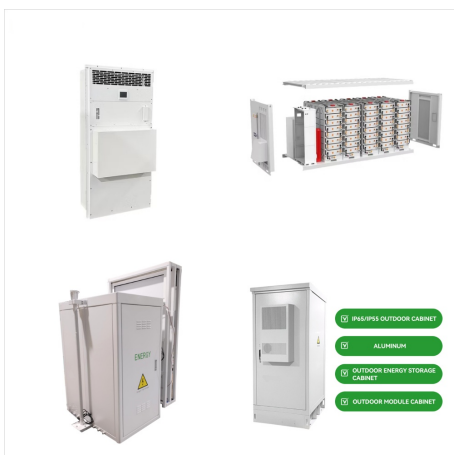
Buy CHINS Bluetooth 2PCS 12V 400Ah LiFePO4
 Battery, Lithium Battery, Smart Battery | Built-in
 200A BMS | Over 4500 Cycle, Perfect for RV,
 Backup Power, Off-Grid etc.: Batteries - Amazon
 FREE DELIVERY possible on eligible purchases
 ???Automotive Grade Lithium Battery???CHINS
 lithium iron phosphate batteries have exceptional
 quality since



CHINS LiFePO4 Battery 12V 400Ah LiFePO4 Deep Cycle Lithium Battery for RV. Rated Capacity (0.2C): 400Ah / 5120Wh. 1 12V 400Ah LiFePO4 Battery. [Bluetooth function] :Compared with the traditional battery monitor, CHINS lithium battery has added Bluetooth function and can obtain various data (SOC) of the lithium iron phosphate battery.



CHINS LiFePO4 Battery 12V 300Ah Lithium Battery. The CHINS LiFePO4 Battery 12V 300Ah Lithium Battery is a big, beefy boy. It measures 20.47 inches wide, 10.59 inches thick, and 8.66 inches tall. At 68 pounds, it's the heaviest battery of the bunch. However, there's a pair of nylon rope handles that make it easy to carry.



The CHINS 100AH Smart 48V LiFePO4 Lithium Bluetooth Battery w/ Built-in 100A BMS built-in high-temperature cut-off prevents charging over 122 °F (50 °C). Lithium Iron Phosphate batteries ship under Class 9 Dangerous Goods PI 965 Section IA, which requires ground shipping ONLY. CHINS typically ships their orders in 10-14 days following payment.



Buy CHINS Bluetooth LiFePO4 Battery Smart 12.8V 200AH Lithium Battery Support Low Temperature Charging (-4??/-20°C), Built-in 100A BMS, 2000+ Cycles, Mobile Phone APP Monitors Battery SOC Data: Battery Chargers - Amazon FREE DELIVERY possible on eligible purchases



Buy CHINS Bluetooth 12V 400Ah LiFePO4 Battery, Lithium Battery, Smart Battery | Built-in 200A BMS | Over 4500 Cycle, Perfect for RV, Backup Power, Off-Grid etc.: Batteries - Amazon ???



Discover the power of LiTime lithium LiFePO4 batteries, perfect for trolling motors, RVs, fishing and marine, home energy storage, outdoors and etc. 12V 400Ah 12V 460Ah 24V 100Ah 24V 200Ah 24V 230Ah



Enjoybot Lithium Batteries???Extra-Long Lifespan
-54% [NEW LAUNCH] Enjoybot 12V 100AH
Bluetooth Group 31 LiFePO4 Lithium Battery with
Low-Temp Protection, 1280Wh, 100A BMS 2-Pack
(400AH) 3-Pack (600AH) 4-Pack (800AH) Add-on
Charger: None. None. 14.6V 20A Charger. 14.6V
40A Charger



The Litime 12V 400Ah LiFePO4 Lithium Battery
offers exceptional value for those in need of a
reliable and powerful power source. Its long
lifespan, high load power, fast charging capabilities,
and lightweight design make it a standout option
among other batteries in the market.



Chins 12.8V/400Ah LiFePO4 Deep Cycle Battery.
Chin's has its own factory, are mainly engaged in
LiFePO4 and lithium-ion battery business, which is
very suitable for RV, Caravan, Solar, Marine, Home
Storage and Off-Grid.. Chins's team keep strive to
maintain a green life on the way of continuing to
explore the new energy, in order to provide a better
low-carbon life for people.



Buy Litime 12V 300Ah Lithium LiFePO4 Battery, Built-in 200A BMS, Max 2560W Power Output, Easy Installation, 4000+ Deep Cycles, FCC& UL Certificates, 10-Year Lifetime, Perfect for Off-Grid, RV, Solar.: Batteries - Amazon FREE DELIVERY possible on eligible purchases Litime 12V 400Ah LiFePO4 Lithium Battery 3200W Max. Load Power Group 8D



CHINS 48V 100Ah LiFePO4 battery Product specifications Rated Capacity (0.2C): 100Ah / 5120Wh Impedance: ??? 6m?(C) Rated voltage: 51.2V Charge Voltage? 1/4 ?57.6?0.8V BMS Board? 1/4 ?100A Energy? 1/4 ?5120WH Max Load Power? 1/4 ?5120W Max Charging Current? 1/4 ?50A Max Discharging Current? 1/4 ?100A Cycle Life? 1/4 ?4500-5000times Charging Temperature? 1/4 ?0?~-55?~(32?F~122?F) ???



CHINS LiFePO4 Battery 12V 100AH Lithium Battery Perfect for Golf Cart, Trolling Motors, Marine, RV, Solar, Max connection in parallel: Up to four identical batteries up to 400AH. Batteries can also be connected in parallel and series at the same time for up to 48V 400AH. Only batteries with the exact same voltage and capacity purchased



CHINS Bluetooth LiFePO4 Battery Smart 12V
400Ah Lithium Battery - Built-in 200A BMS,
2000~5000 Cycles, Perfect for Replacing Most of
Backup Power, Home Energy Storage and Off-Grid
etc. Try again! Details



Hello, looking for ideas on optimal settings for
Victron Multiplus 3000 12v using victronconnect (or
is using vedirect better?) with the Chins 300ah
lifepo4 battery and charging/using 30 amp shore. To
start this is all the battery specs I could find on it
specifically: Chins 300ah LiFePO4: Rated Capacity
(0.2C): 300Ah / 3840Wh



CHINS Bluetooth LiFePO4 Battery Smart 12V
400Ah Lithium Battery - Built-in 200A BMS,
2000~5000 Cycles, Perfect for Replacing Most of
Backup Power, Home Energy Storage and Off-Grid
etc. Try again! Details



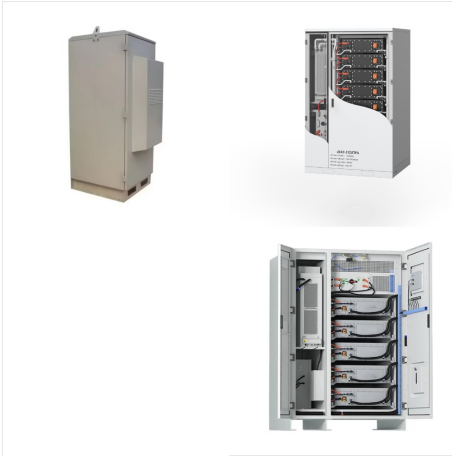
???Lithium Iron Battery???: The lifespan of CHINS LiFePO4 (lithium) batteries is 8 to 10 times longer than that of regular lead-acid batteries (4500~5000 cycles vs 300-500 cycles). The usable capacity also doubles compared to that of a lead-acid battery while the weight is 33% less thanks to its significantly higher energy density.



CHINS Bluetooth LiFePO4 Battery Smart 12.8V 100AH Lithium Battery Perfect for Trolling Motors, Golf Cart, Marine, RV, Solar, Boat, Built-in 100A BMS, 2000+ Cycles. Visit the CHINS Store. 4.4 176 ratings.



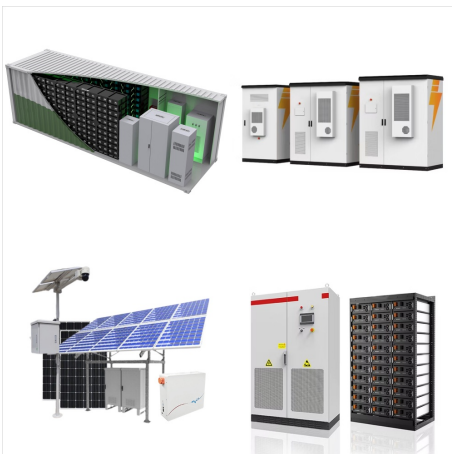
Buy CHINS 4 Pack LiFePO4 Battery 12V 100AH Lithium Battery Perfect for Golf Cart, Trolling Motors, Marine, RV, Solar, Boat and Off-Grid, Built-in 100A BMS, 2000~5000 Cycles: Batteries - Amazon FREE DELIVERY possible on eligible purchases CHINS LiFePO4 Battery 12V 100AH Lithium Battery - Built-in 100A BMS with Low-Temp Protection, 2000



Amp Hour LIFEPO4 Lithium Battery constructed using 3.2V LIFEPO4 Lithium Cells, 5.12kWh, 12.8V Actual Voltage, 14.6 Max Voltage Safe for use in parallel for higher capacity systems, Each battery has a true 400 Amp Hour Capacity at 12.8V, 200A Continuous Discharge (each battery), Each 400Ah battery has its own Smart Battery Management System (Smart ???)



The weight of the lithium iron phosphate battery is 30% lighter than the lead-acid battery of the same capacity. Brand: CHINS, Size: 20.47 x 10.59 x 8.66 inches, Color: Black, Orange, Item Weight: 70.5 pounds. ???Lithium Iron Technology???: CHINS deep cycle lithium-ion battery has higher energy density, more stable performance and greater power.



???Bluetooth Function???: Compared with the traditional battery monitor, CHINS Bluetooth lithium battery has added Bluetooth function and obtain various data (SOC) of the lithium iron phosphate battery. (Max 4S4P) to get more capacity (Max 400Ah) and higher voltage (24V, 36V, 48V). Other installation methods: 4S2P, 2S2P, 3S2P, etc.



Compared with lead-acid batteries, the LiTime 12V 400Ah lithium battery simply can't be beat for ease and portability. Weighing just 86 lbs is 1/3 the weight of equivalent lead acid batteries. Power your home, cabin, RV or worksites without stressing over heavy lifting or space constraints.



Up to 3% cash back? ??? Built-In BMS ??? CHINS LiFePO4 battery has built-in Battery Management System to protect it from over-charge, over-discharge, over-current, and short ???