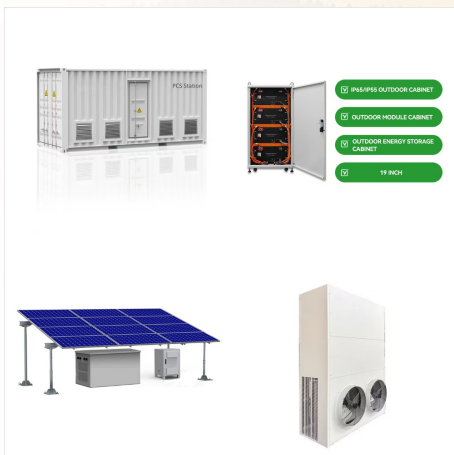




PVsyst OND file Verification Report; Integrated & separable wirebox; NRTL CSA CPS SCH100-125KTL UL CERT; The 100 & 125kW (111 & 132kVA) medium power CPS three phase string inverters are designed for ground mount and carport applications at 1500Vdc. The units are high performance, advanced and reliable inverters designed specifically for the



Shanghai Chint Power Systems Co.,LTD. Product Warranty-CEC-PV. 2023.08.17 Size? 1/4 ?123KB. Send to Email Download View; Dongle Gateway and "Chint Connect"APP User Manual. 2023.08.17 Size? 1/4 ?475KB. Send to Email Download View; USER MANUAL. 2023.08.17 Size? 1/4 ?13291KB.



CHINT POWER 2014/10-MKT Chint Power Systems America design to make the whole system highly reliable. Efficiency(%) 89.00% 91.00% 93.00% 95.00% 97.00% 0 20000 40000 60000 80000 100000 330V 430V 500V DC INPUT VOLTAGE



The Lab and Field Analysis Engineer's primary role is to support the Chint Power Systems (CPS) team in diagnosing complex field and product issues on CPS PV and ESS installations across the US. Key Responsibilities Visit customer sites to troubleshoot issues relating to PV and ESS inverter and system operation.



Prior to the certification ceremony, Jin Zhibin, General Manager of the East-North Region for Electronic and Electricals at Intertek, mentioned that based on current market information, as of the time of this release, Chint Power's POWER BLOCK 2.0 liquid-cooled energy storage system is the first 20-foot 5.0MWh containerized energy storage



Chint Power Perspective, Scaling in America ; Webinars. Streamlining ESS with CPS Turnkey C& I Solution; Distributed vs. Centralized String: Optimizing PV Plants with the 250 KW, 600v Inverters The Surge in Demand for Utility-Scale Energy Storage; 800Vac Inverter and Balance of Systems Considerations for Large-Scale Solar (Dec. 2022) Modular

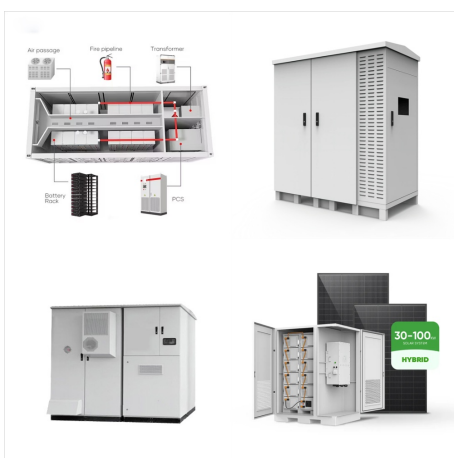
CHINT POWER SYSTEMS OND PV SYST



The power station uses the factory roof and carport roof to install solar power system, with a total installed capacity of about 351kWp. The usable area of the factory roof is about 2400???, and 234kWp solar modules can be installed. Shanghai CHINT Power Systems Co., Ltd. Zhejiang CHINT Cable Co., Ltd. Zhejiang CHINT Automotive Technology



Chint Power Systems (CPS) displayed the 275kW inverter for North America, a brand new 350kW inverter, a solar plus energy storage system solution, small scale utility PV solutions, and C& I PV solutions at booth 2804. Four series of component products including Astroenergy ASTRO N series PV modules from Chint Renewable Energy were also on display.



The DC input voltage range can reach up to 1000V allowing for more flexible the system configuration. Built using low loss magnetic material and advanced control algorithm, these inverters can reach a maximum efficiency of 98.5%. 50MW Solar Power Station in Jinta Address: Gansu, China Scale: 50MW Inverter: CPS SC500KTL

CHINT POWER SYSTEMS OND PV SYST



In addition, to realize the long-term reliability and safety of the system, Chint Power POWER BLOCK2.0 liquid-cooling energy storage system adopts an all-around safety design, from the electric cell, pack, battery cluster to the system, constructing five levels of fusing and twelve levels of electrical linkage protection; The system adopts pack



Chint Power Systems America 6800 Koll Center Parkway Suite 235 Pleasanton, CA 94566 Date: 31 March 2020 Subject: OND File modification for derated inverters ??? 125kW example Background: The following are the steps needed to simulate active power derating. Step 1: Download the latest OND file from the website.



CHINT POWER SYSTEMS | 4.597 volgers op LinkedIn. Light up the world by Green Energy! | Shanghai Chint Power Systems is a solar power system solution provider, designing, manufacturing, and supplying high reliability 1kW~2MW PV inverters and power solutions for customers. An international senior management team, experienced and solid research and ???



2.1 Inverter for Grid-tied PV Systems CPS
SCH100KTL/US-600 and CPS SCH125KTL/US-600
3-Phase String Inverters are designed for use with carport, commercial rooftop, and large-scale PV grid-tied systems. The system is generally made up of PV modules, DC power distribution equipment, PV inverter and AC power distribution equipment (Figure 2-1).



DC energy from the PV modules to AC power by synchronizing the output current to the same frequency and phase as the AC grid. All or part of the AC power is supplied to local loads, and the surplus power is exported to the electric utility grid. AC Grid Bidirectional electric meter AC power distribution equipment Figure 2-1 Grid-tied PV system



CHINT POWER SYSTEMS AMERICA 2022/8-MKT
NA Chint Power Systems America 1380 Presidential Drive, Suite 100, Richardson, TX 75081 Tel: 855-584-7168 Mail: AmericaSales@chintpower Web: Technical Data Model Name CPS
SCA50KTL-DO/US-480 CPS
SCA60KTL-DO/US-480 Max. PV power



PVsyst OND file Verification Report; NRTL CSA CPS SCA50-60KTL UL CERT; The 50 & 60kW (55 & 66kVA) medium power CPS three phase string inverters are designed for ground mount, rooftop and carport applications. The units are high performance, advanced and reliable inverters designed specifically for the North American environment and grid



Chint Power's new 350kW North American version high-power inverter is another breakthrough and innovation in the field of high-power series inverters since the 275kW series inverter. Its excellent temperature design ensures that the inverter can still operate at full power at 45 °C, greatly improving the system's power generation efficiency.



power is supplied to local loads, and the surplus power is fed to the grid through AC distribution cabinet. Figure 2-1 illustrates the position and function of the DC Combiner Box in the Grid-tied PV system: Figure 2-1 Grid-tied PV system 2.2 Overview of PV Smart Combiner Box CPS CB10~20S 1500V series PV Smart Combiner Box is a safe, compact,



The CPS Flex Gateway is a data communications and controls solution for the CPS inverter line. The gateway acts as a Modbus master data logger and gateway solution for communications and controlling commercial and utility scale inverter applications.



CPS is excited to introduce a turnkey commercial energy storage system (ESS) solution to the North American market. The new CPS ESS solution integrates 125/250 kW two-hour energy storage building blocks that can be easily expanded to meet any C& I project size. Modular design minimizes the impact of faults and their associated O& M costs.



PV EXPO Tokyo 2024 was held from February 28th to March 1st at the Tokyo Big Sight. Chint Power presented ground-based power stations, and industrial and commercial energy storage solutions at Booth E14-29, and shared the latest technical achievements, project cases, and energy storage system solutions with exhibitors from all over the world.



with various commercial rooftop systems and distributed power station systems. Normally, the system mainly consists of PV modules, DC power distribution equipments, PV inverter and AC power distribution equipments (Figure 2-1). The inverter converts the DC from PV modules to AC with the same frequency and phase as the AC grid.



This Exhibition highlighted Chint Power's 320 kW string inverters, which inherit the high efficiency, high reliability and excellent performance of Chint Power's high-power inverters. The products feature excellent temperature-resistance design, maintaining stable output without derating even in harsh environments of up to 50°C.



The system is generally made up of PV modules, DC power distribution equipment, PV inverter and AC power distribution equipment (Figure 2-1). The inverter converts the DC from PV modules to AC with the same frequency and phase as the AC grid. All or part of the AC power is supplied to local loads, and the surplus power is supplied to



Discover all CHINT products, including Low Voltage device, Power Transform device, Instruments and Meters, Building Equipment, New energy and Automation. Login. Shanghai CHINT Power Systems Co., Ltd. Zhejiang CHINT Cable Co., Ltd. Zhejiang CHINT ???



The 25kW-480V CPS three phase string inverters are designed for rooftop and carport PV applications. These compact units are high performance, advanced and reliable inverters designed specifically for the North American environment and grid.