

Who is chloride power systems?

Chloride Power Systems & Solutions Limited. Has Installed A Number Of Solar Power Systems All Over India In The Past Few Years Under The Exide Brand. It Has Joined Hands With Two Of The World'S Renowned Solar Cell Manufacturers To Make The Spv Module In Order To Serve The World'S Need Of Green And Clean Energy.

What makes chloride a great power supply company?

From its early days as a battery manufacturer to its current position as one of the global leaders in UPS systems, Chloride has always been at the cutting edge of power supply solutions. The company looks forward to continued success in meeting the power needs of the world's industries for many years to come.

How many employees does chloride have?

Chloride employs more than 350 people worldwide Generates 70% of its turnover internationally Installed base of nearly 70,000 systems

What can chloride do for You?

As a System Integrator, Chloride provides complete Solar Power Solutions from KW level Power Packs to Roof-top Solar Power Plants to MW level large Solar Power Plants in both Off-Grid & Grid-Connected Field.

What types of products does chloride offer?

From small to large projects, Chloride's offer is organised into four categories. These include small DC chargers, industrial UPS, ATEX/IECEx & Nuclear UPS, safety lighting (AEES) View our Product Catalogue News and Insights

Why should you choose chloride?

From access security points, to turbine lube pumps, to nuclear reactors, Chloride products safeguard people and assets. Headquartered in Lyon France, Chloride is a truly global business working with electrical engineers across the world and having installed base in more than 150 countries.

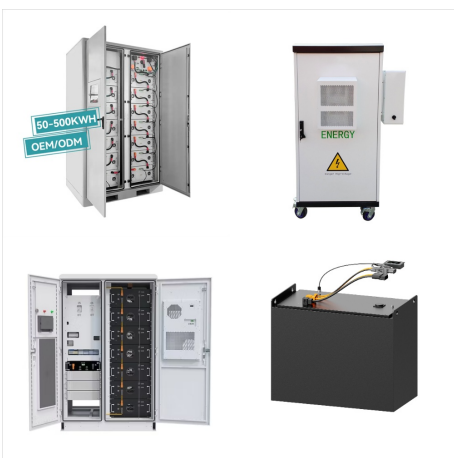
CHLORIDE POWER SYSTEMS CAREERS



Chloride Power Systems and Solutions is rated 3.8 out of 5 stars on AmbitionBox, based on 37 company reviews. This rating reflects an average employee experience, indicating moderate satisfaction with the company's work culture, benefits, and career growth opportunities.



The Chloride CH3 Series is a three phase centralized inverter UPS system that is a reliable and a cost effective way to meet NFPA code requirements. It is compatible with all luminaires and has a peak overload capability of 1700% to accommodate inrush current from LED luminaires.



Chloride Power Systems and Solutions Limited | 100 followers on LinkedIn. Skip to main content LinkedIn. Articles People Learning Jobs Join now Sign in 128,123 open jobs Developer jobs 103,246 open jobs Engineer jobs 91,595 open jobs

CHLORIDE POWER SYSTEMS CAREERS



Chloride is a brand with over 130 years of history. Founded in 1891, the organization began as Chloride Electrical, a company dedicated to designing and manufacturing batteries. Chloride acquired Coredel in 1978, bringing 30 years of experience in the uninterruptible power supply industry into the organization, and setting the path Chloride has followed since.



Chloride is a world leader in Uninterruptible Power supply product and propose a whole range of services to ensure longevity of its products for your peace. Markets & Expertise. Our Markets. Replacing the full UPS system is not always practical, upgrading the UPS rather than replacing will add 10-15 years of useful life to UPS systems.



? Chloride Power Systems & Solutions Limited - Find Chloride Power Systems & Solutions Limited information on The Economic Times. Get the latest Chloride Power Systems & Solutions Limited News, Chloride Power Systems & Solutions Limited Company Profile details and ???

CHLORIDE POWER SYSTEMS CAREERS



The Chloride XP Industrial UPS system is designed for simple operation and built for reliable service in some of the most demanding environments on the planet. Watch the virtual tour of the XP in operation on an offshore drilling platform. A global leader in designing, manufacturing, and servicing industrial UPS systems.



Chloride Power Systems & Solutions Limited (CPSSL) was in the business of designing, manufacturing and assembling industrial battery chargers. In addition it was also a DC power solution provider. The company also had a solar power business that undertook solar lighting systems and solar power plant projects.



The Chloride Excel Apodys line of industrial rectifiers and battery chargers is available in the range of 400 W-450 kW. It is offered with three-phase and single tickets to meet the specific needs of multiple sectors of oil & gas and power generation plants.

CHLORIDE POWER SYSTEMS CAREERS



A power outage in the extreme conditions of today's industrial applications is another way of spelling disaster. Which is why Vertiv's forward-looking Chloride AC and DC uninterruptible power supplies and integrated industrial power system solutions are built to withstand the harshest environments while delivering the most efficient and reliable backup power for your critical ???



The origin of Chloride stretches back to the 1890s, with its roots in the design and production of batteries. With an interest in the power supply needs of heavy industry sectors, Chloride entered a new era, shifting to the manufacture and installation of mission-critical industrial UPS systems In its many years of evolution, Chloride acquired numerous other aligned businesses - French ???



Chloride devient Chloride Industrial Systems
Acquisition de DB Power India D?m?nagement vers un nouveau site ? Chassieu, en France Acquisition des marques Custom Power, EPS et AEES
L"?quipe de direction ach?ve le rachat de l'activit? industrielle pour former Chloride Chloride rach?te Coredel 2000

CHLORIDE POWER SYSTEMS CAREERS



Chloride(R) CP70Z AC Uninterruptible Power Supply System 5 to 250 kVA (1-ph output) / up to 500 kVA (3-ph output) Key Features ??? 6- or 12-pulse thyristor rectifier at the core of the best-in-class reliability ??? Reduced inrush current ??? 10xIn to avoid oversizing upstream protection and 2-step start-up ??? <10% THDI in 12-pulse SCR system is possible without additional harmonic filters



Find all the Emerson - Chloride Excel Apodys - DC UPS, 600 W-220 kW Battery Charger details here for Emerson / Chloride DC Power Systems including extra documentation about Emerson - Chloride Excel Apodys - DC UPS, 600 W-220 kW Battery Charger. About Alpine Careers Service Coverage Reviews & Testimonials Upcoming Events Timeline GSA

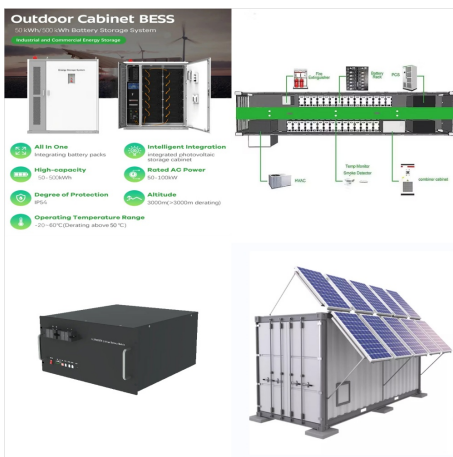


Chloride Power Systems & Solutions Ltd. Year 1957, when formal international joint ventures were unheard of, The Khatau and Thakersey groups, already renowned names in Indian industry, joined hands with German promoters Siemens and F & G and set up a power cable factory. The new venture commenced operations in Mumbai and began with the

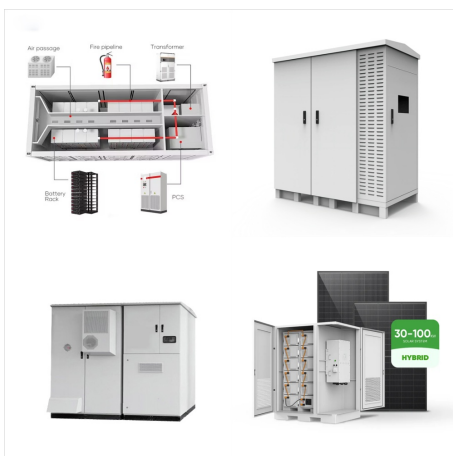
CHLORIDE POWER SYSTEMS CAREERS



We specialise in answering the demand for reliable industrial power Chloride delivers Engineering, Manufacturing, Testing and Servicing of Low-Voltage, Static, Made-to-Order AC and DC Uninterruptible Power Supply Systems. DC power UPS systems capable of providing 24VDC with a high power rating. The challenge lay in delivering this with



The Chloride(R) LUMERIS power packs are DC emergency power supplies with a maintenance-free lead battery. Chloride(R) Poweris is an industrial power supply unit that provides a DC voltage backup to power 12, 24 or 48 Vdc systems. Rating: 10W to 1450W; Output: 12/24/48 Vdc; Battery capacity: 7-80 Ah Careers at Chloride; Contact Us; Our



, Chloride(R) has been designing, manufacturing and maintaining stabilised regulated power supplies and direct current . uninterruptible power supply systems. Chloride, FRENCH expert in direct current solutions for 70 years. The founding of Coredel, specialists in direct . current power supply. 1948. 1978 Coredel becomes a . subsidiary

CHLORIDE POWER SYSTEMS CAREERS



Chloride acquired Coredel in 1978, bringing 30 years of experience in the uninterruptible power supply industry into the organization, and setting the path Chloride has followed since. Today, Chloride has achieved its goal of becoming a market leader in the Uninterruptible Power Supply marketplace for mission-critical industrial applications.

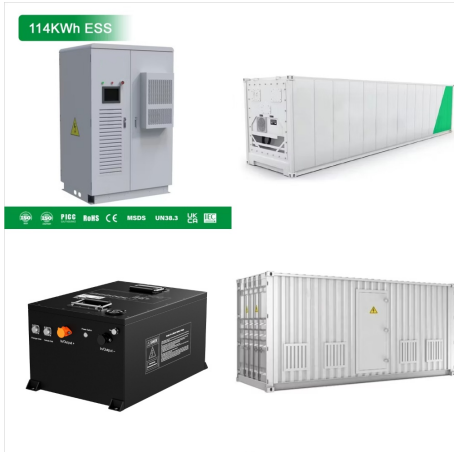


Find out what works well at Chloride Power Systems & Solutions Ltd. from the people who know best. Get the inside scoop on jobs, salaries, top office locations, and CEO insights. Compare ???



The Emerson Chloride CP-70Z industrial Uninterruptible Power Supply system (UPS) is the flagship product of Chloride Industrial Power. It combines conservative design topology with proven digital control technology to offer the best performances in any electrical and environmental condition.

CHLORIDE POWER SYSTEMS CAREERS



Chloride is a brand with over 130 years of history. Founded in 1891, the organization began as Chloride Electrical, a company dedicated to designing and manufacturing batteries. Chloride acquired Coredel in 1978, bringing 30 years of experience in the uninterruptible power supply industry into the organization, and setting the path Chloride has followed since.



Chloride Power Systems & Solutions Limited's Corporate Identification Number is (CIN) U31100WB1980PLC032796 and its registration number is 32796 s Email address is and its registered address is EXIDE HOUSE 59 E, CHOWRINGHEE ROAD KOLKATA Kolkata WB 700020 IN.