

Why did we install solar & battery storage systems on Christmas Island?

Christmas Island - home to the greatest migration of red crabs in the world, and an island that is almost all national park. We installed solar and battery storage systems at two sites on Christmas Island for Parks Australia to provide clean power to their main headquarters and research field station.

Does Christmas Island National Park have solar & battery storage?

Solar and battery storage for Christmas Island National Park. Christmas Island - home to the greatest migration of red crabs in the world, and an island that is almost all national park.

Did Christmas Island propose a wave generator?

This is all a bit late, and sad, several years back the residents of Christmas Island proposed a wave generator and had and were denied the opportunity and so now at the 11th hour they propose a poor cousin.



Captain William Mynors on the East Indian Company vessel, the Royal Mary, sees and names the Island on Christmas Day.. 1857 Crew of the vessel Amethyst tires to explore the island, but are hampered by inland cliffs and dense jungle.. 1887 A party from British naval vessel HMS Egeria reach the summit of what is now Murray Hill, finding phosphate as ???



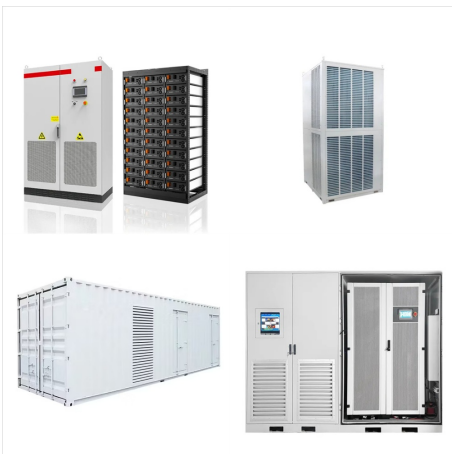
?,??,??,?????,??,?????,??,??,??,??,??,??,?????
?,??,??,? (?,-?,??,??,??,??,(C): Territory of
Christmas Island, ?,??,u?,?: , ?,??,??,??,??,?:
Wilayah Pulau Krismas)
?,<?,??,??,-????,??,??,?????,-?,?????,?
????,??,??,??,??,??,??,??,?????,??,??,?
(?,-?,??,??,??,??,(C): Christmas Island, ?,??,u?,?: ,
?,??,??,??,??,?: Pulau Krismas)
????,?????,?????,??,??,?????,?????,? ???



Flag of Christmas Island 4. There are some amazing views! The terrain here consists of steep cliffs along the coastline, rising sharply to a central plateau. 5. Christmas Island is minute. The total land area of Christmas Island is 52 square miles (135 square kilometres) ??? that's slightly larger than Bristol, an English city. 6. Very few



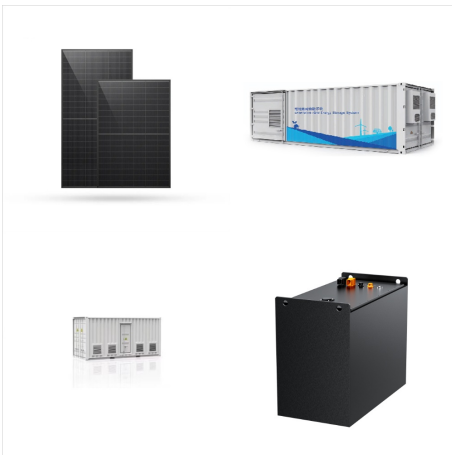
?????????, ??



JCNS. Shenzhen JCN New Energy Technology Co., Ltd. Zhenmeitong Industry Zone, Guangming New District, Shenzhen, Guangdong Click to show company phone ENF Solar is a definitive directory of solar companies and products. Information is checked, categorised and connected. ENF Recycling Terms of



Christmas Island is an easy destination to visit, but planning ahead will help you get the most out of your time here. The first thing to decide is when you're going to visit ??? perhaps you'd like to observe the annual red crab migration or dive with visiting whale sharks?. Getting to the park is easy thanks to regular flights from Perth, Jakarta and Kuala Lumpur.



Solar Power on Christmas Island. Our ambition is to help lead Christmas Island towards a sustainable future based on renewable energy. PRL Group have committed towards rooftop solar for all its owned properties on the island, and the design and development of a large-scale solar energy system for Christmas Island.



? 1/4 ?The Territory of Christmas Island? 1/4
?,1958,,???,63%, ???



Christmas Island features 48 different light displays throughout General Burnside Island State Park, with including some displays up to 104-feet-long and 16-feet-high. Tickets can be purchased online or upon arrival at the gate of the park. Hours: Mon-Thurs: 6PM-9PM Fri-Sun: 6PM-10PM. Location: General Burnside Island State Park 8801 US-27



Solar Power on Christmas Island. Building Our Sustainable Future. About Us. Who We Are; Our History; Leadership Team; Our Business. Resources & Energy Our Community, Our Future; Christmas Island Stories; Green Space Tech; Christmas Island Social & Economic Impact; Protecting Our Environment; Careers; News & Media. News; Newsletters; Reports



The federal Morrison government has unveiled plans to underwrite the construction of a 1MW solar farm on Christmas Island, an external territory in the Indian Ocean with a population hovering



As far as nature inspired adventures go, it's hard to go past Christmas Island's unique offerings. One of the world's most extraordinary reefs just off the shore, tropical jungles that stretch the vistas of the island, depths that reach hundreds of meters within swimming distance from shore, an incredible history, vibrant culture and pristine ocean bordered by kilometre-after-kilometre of



Model = JCNS U-Sky Solar fan inside GROSS weight = 6kg Come with 4000Mah battery Three speed module Speed 1 can last up to 8-12hours Speed 3 up to 4hours On full charge Automatic turn from Left to Right . Comes with 20watts Solar panel Color is white and blue . Band new Made in China



The majestic Tai Jin House, a grand colonial edifice, once served as the residence of the British Administrator on Christmas Island. Situated on the edge of a sea cliff, it has breathtaking views of Flying Fish Cove and the boundless Indian Ocean beyond. Today, Tai Jin House has been transformed into a captivating museum that narrates the rich



L'isola di Natale (in inglese Christmas Island), ufficialmente conosciuta come Territorio dell'isola di Natale (Territory of Christmas Island) ? una piccola isola appartenente politicamente all'Australia e situata nell'oceano Indiano a sud dell'Indonesia, per la precisione a 350 km a sud di Giava e Sumatra e circa 1.550 km a nord-ovest del punto pi? vicino sulla terraferma australiana.



Virgin Australia flies to Christmas Island twice weekly from Perth (Australia) on Tuesdays (direct to CI, via Cocos Keeling Islands on way back to Perth) and Fridays (via Cocos Keeling Islands, but direct to Perth on way back).Book with Virgin Australia.. Altitude Airways has some intermittent flights between Jakarta (Indonesia) and Christmas Island. . Check out their ???



Christmas Island - home to the greatest migration of red crabs in the world, and an island that is almost all national park. We installed solar and battery storage systems at two sites on ???



Company Introduction: Shenzhen JCN New Energy Technology Co., Limited, it is a professional manufacturer engaged in the R& D, sale and service of solar PV module, solar controller, solar power system, solar lantern, solar street light, solar water pump system and solar charger. We are located in Shenzhen with convenient transportation access, at present, our company was ???



Since humans came to settle on Christmas Island in the late 19th century, native wildlife has faced an onslaught of many invasive species. On top of this, land use changes and human activity poses a real threat to crabs where habitat loss has increased significantly, and vehicles are unfortunately very effective crab-crushers.



The Australian Government's Indian Ocean Territories (IOT) Power Service is changing the way renewable energy is regulated on Christmas Island (CI) and the Cocos (Keeling) Islands (CKI), ???



Small scale solar for the local community. We installed small scale solar power systems across the islands to start the transition to a clean, sustainable future for local communities.



Christmas Island is an incredible destination for turtle watching, offering sanctuary to two endangered species of sea turtles: the green turtles and hawksbill turtles. Turtles can be observed in the island's surrounding waters throughout the year, with green turtles also nesting on the picturesque shores of Dolly and Greta beaches. Remarkably



Christmas Island, Christmas Island - Climate and weather forecast by month. Detailed climate information with charts - average monthly weather with temperature, pressure, humidity, precipitation, wind, daylight, sunshine, visibility, and UV index data. The months from June to August, representing the summer season on the Island, exhibit decreased rainfall and ???



The Territory of Christmas Island is an Australian external territory in the Indian Ocean comprising the island of the same name. It is located approximately 350 kilometres (190 nautical miles) south of Java and Sumatra and about 1,550 km (840 nmi) north-west of the closest point on the Australian mainland. With an area of 135 square kilometres (52 sq mi), [8] Christmas Island's ???



? 1/4 ?The Territory of Christmas Island? 1/4
?,1958,,???,63%,360,1400? 1/4
?10?30???,105?40



A wet day is one with at least 0.04 inches of liquid or liquid-equivalent precipitation. The chance of wet days in Christmas Island varies very significantly throughout the year. The wetter season lasts 5.4 months, from November 27 to May 7, with a greater than 29% chance of a given day being a wet day. The month with the most wet days in Christmas Island is February, with an average ???



Snorkelling on Christmas Island is an absolute dream. SNORKEILING. Dive into the mesmerising underwater world of Christmas Island, where the coral reefs that surround the island make snorkeling an absolute must for every visitor. The sheer abundance of vibrant fish and coral, just a stone's throw from the shore, creates a breathtaking spectacle.



Current Air Quality in Christmas Island. Get the app for the world's most accurate hi-res weather forecasts. 4.8. 1M+ USERS / 30K RATINGS. Download for free now. Historical Climate Data. 10 year average. Month. December. Products Iridium Phones PredictWind App Offshore App Clothing Iridium GO! exec Iridium GO!