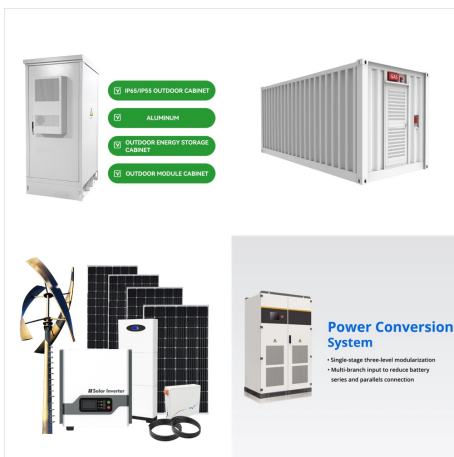


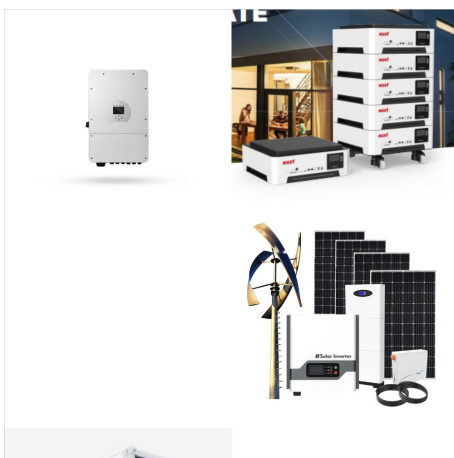
# CISCO REDUNDANT POWER SYSTEM 2300 AND BLOWER



Spare RPS 2300 Chassis w/ Blower, PS blank, No Power Supply: 3: C3K-PWR-750WAC= Catalyst 3750-E/3560-E/RPS 2300 750WAC power supply spare: 6: CAB-ACE: AC Power Cord (Europe), C13, CEE 7, 1.5M: 6: ACC-RPS2300= Spare Accessory Kit for Cisco Redundant Power System 2300: 6: C2960X-STACK= Catalyst 2960-X FlexStack Plus ???



Why Should I Care About the Cisco Redundant Power System 2300? The Cisco Redundant Power System 2300 (Cisco RPS 2300) increases availability for converged data, voice, and video networks. The system delivers power supply redundancy and resiliency for a variety of switch and router power requirements, including Power over Ethernet (PoE).

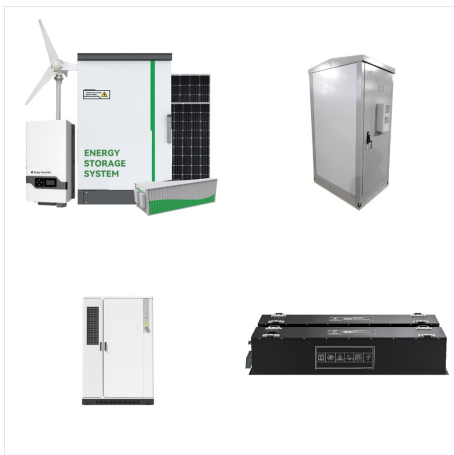


Cisco Redundant Power System 2300 Q. Will the entire Cisco RPS 2300 unit need to be replaced if it experiences power supply or blower problems? A. No. Cisco RPS 2300 users can replace the faulty power supplies or blowers. The product IDs for the spares are shown in Table 3. Table 4 lists maintenance contract information.

# CISCO REDUNDANT POWER SYSTEM 2300 AND BLOWER



The Cisco Redundant Power System 2300 (RPS 2300) increases availability for converged data, voice, and video networks. Cisco Redundant Power System 2300 and Blower, No Power Supply :  
Service Category: C : Global Price in USD: \$1682.07 Price Alert: test: 888 Quantity Min: N/A



The Cisco RPS 2300 can be deployed in a variety of situations to help ensure network resiliency for mission-critical applications. Figure 3 shows the Cisco RPS 2300 in a converged voice and data network that includes switches connected to IP phones and PCs. In the event of a switch's internal power supply failure, the Cisco RPS 2300 helps



Book Title. Cisco Redundant Power System 2300 Hardware Installation Guide, January 2007. Chapter Title. Translated Warnings. PDF - Complete Book (15.9 MB) PDF - This Chapter (6.05 MB) View with Adobe Reader on a variety of devices

# CISCO REDUNDANT POWER SYSTEM 2300 AND BLOWER

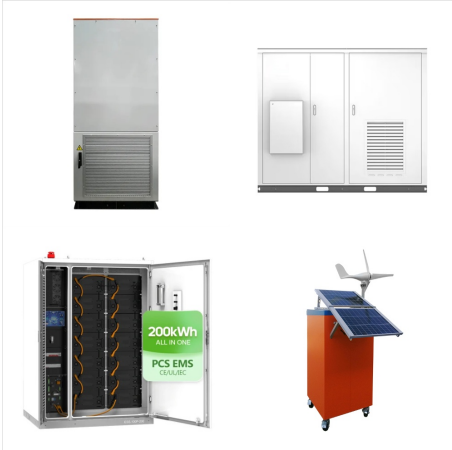


Figure 3-1 Inserting the AC-Power Supply Module .  
Step 7 Align the two captive screws with the screw holes in the RPS 2300 front panel. Using a ratcheting torque screwdriver, torque each screw to 10 lbf-in. (160 ozf-in.). Step 8 Connect the power cord (CAB-16AWG-AC) to the module and to an AC-power outlet.. Step 9 Snap the AC power cord retainer into place to ???



Spare 45CFM Blower for Cisco Redundant Power System 2300. \$975.54 Get Discount: 7:  
BLNK-RPS2300. Bay Insert for Cisco Redundant Power System 2300. \$0.00 Get Discount: 8:  
PWR-RPS2300++ Cisco Redundant Power System 2300 and Blower.No Power Supply. \$1,654.86



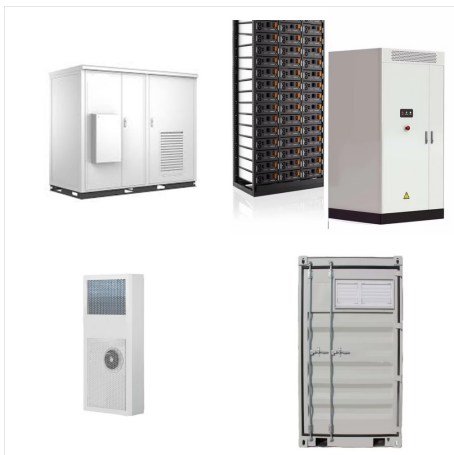
Anugrahpratama Jual CISCO Redundant Power System 2300 & Blower, No Power Supply  
[PWR-RPS2300] Spesifikasi: SNTC-8X5XNBD  
PWR-RPS2300; AC Power Cord (Europe), C13, CEE 7, 1.5M; RPS Cable for Cat 3K-E, 2960 PoE Switches and ISR G2 Routers; Catalyst 3750-E / 3560-E 750WAC power supply;



# CISCO REDUNDANT POWER SYSTEM 2300 AND BLOWER



The Cisco Redundant Power System 2300 (RPS 2300) increases availability for converged data, voice, and video networks. The system delivers power supply redundancy and resiliency for a variety of power requirements, including Power over Ethernet (PoE). Spare 45CFM Blower for Cisco Redundant Power System 2300 . CAB-RPS2300-E= Spare RPS Cable



This document contains the list of Cisco products that are compatible with the Cisco Redundant Power System 2300 (RPS 2300). Table 1 lists the devices supported by the RPS 2300. Documentation on all these devices can be found on Table 1 Supported Devices . Device



The Cisco Spare Redundant Power System 2300 Chassis with Blower a Power Array Cabinet, is a redundant power system that provides seamless failover for internal power supply failures for up to six network devices. It automatically senses if an internal power supply of a connected device fails and immediately supplies power to the failed device. The device then has continuous ???

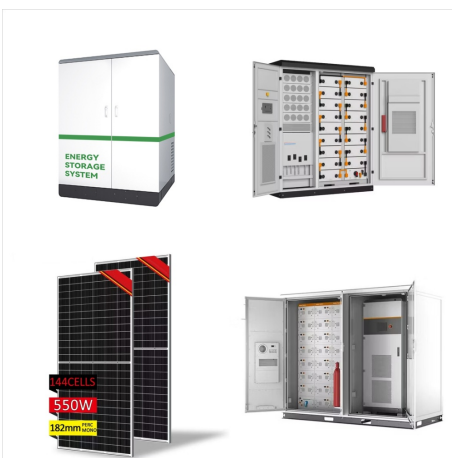
# CISCO REDUNDANT POWER SYSTEM 2300 AND BLOWER



Cisco Redundant Power System 2300 and Blower, No Power Supply PWR-RPS2300 RENEWED . Visit the Amazon Renewed Store. Search this page . Price: \$34.03 \$34.03: Eligible for Return, Refund or Replacement within 90 days of receipt .



Today's session is on the new Cisco Redundant Power System 2300, also known as RPS 2300. With me today is Vipul Redey, Product Manager at Cisco for the RPS 2300. Welcome, Vipul. RPS 2300 consists of a chassis with slots for two power supplies and a blower and RPS cables for connecting to devices such as switches and integrated services



Spare 45CFM Blower for Cisco Redundant Power System 2300 . CAB-RPS2300-E= Spare RPS Cable RPS 2300 Cat 3750E/3560E, 3750v2/3560v2, and 2960/2960-S Switches . CAB-RPS2300= Spare RPS Cable for Cisco Redundant Power System 2300 . Information for this document is taken from the Cisco website at the following web page:

# CISCO REDUNDANT POWER SYSTEM 2300 AND BLOWER



Cisco PWR-RPS2300 Cisco Redundant Power System 2300 & Blower No Supply Array Cabinet units which are shipped internationally have a mandatory 2-5 business day security holding period between payment being received and shipment processing. This security policy is to allow funds to fully clear our bank account. International transport costs can



Cisco Redundant Power System 2300 Compatibility Matrix November 2008 This document contains the list of Cisco products that are compatible with the Cisco Redundant Power System 2300 (RPS 2300). Table 1 lists the devices supported by the RPS 2300. Documentation on all these devices can be found



The Cisco Redundant Power System 2300 (RPS 2300) increases availability for converged data, voice, and video networks. The system delivers power supply redundancy and resiliency for a variety of power requirements, including Power over Ethernet (PoE). It helps ensure uninterrupted operation and protection against device power supply failures by

# CISCO REDUNDANT POWER SYSTEM 2300 AND BLOWER



Cisco Redundant Power System 2300 Hardware Installation Guide 78-17647-02 ?? When installing the RPS 2300 is a rack with a switch stack, install the RPS 2300 at the bottom of the rack. If needed, allow one RU space between the RPS 2300 and the first switch above to provide room for cabling. Connect



Buy PWR-RPS2300= - Cisco Systems - Cisco Redundant Power System 2300 - Power supply - redundant ( rack-mountable ) - 1U - for Cisco 28XX, 28XX V3PN, 3825, 3825 V3P. Newark offers fast quotes, same day shipping, fast delivery, wide inventory, datasheets & technical support.



Cisco Redundant Power System 2300 The Cisco (R) Redundant Power System 2300 (Cisco RPS 2300) is a redundant power system that increases availability for converged data, voice, and video networks. The system delivers power supply redundancy and resiliency for a variety of power requirements, including Power over Ethernet (PoE).



# CISCO REDUNDANT POWER SYSTEM 2300 AND BLOWER



Cisco Redundant Power System 2300 Hardware Installation Guide (January 2007) Bias-Free Language. Bias-Free Language. The documentation set for this product strives to use bias-free language. For the purposes of this documentation set, bias-free is defined as language that does not imply discrimination based on age, disability, gender, racial



The Cisco RPS 2300 supplies redundant power for up to two of six connected 48-port PoE devices in a convenient, 1-rack-unit form factor (Figure 1). When attached to Cisco Catalyst 3750-E or 3560-E Series Switches, the Cisco RPS 2300 offers additional intelligent management capabilities. Figure 1. Cisco RPS 2300 FLEXIBILITY AND HIGH AVAILABILITY