



What is Cisco redundant power system 675?

CISCO SYSTEMS REDUNDANT POWER SYSTEM 675 The Cisco Redundant Power System 675 (RPS 675) is designed to increase availability in a converged data, voice, and video network. The system delivers superior internal power supply redundancy and resiliency at an affordable price.

Does the Cisco RPS 675 support internal power supply redundancy?

The Cisco RPS 675 supports internal power supply redundancy for one of six Cisco networking devices and provides customers with an immediate failover capability. The Cisco RPS 675 incorporates a quick failover feature, ensuring customers that the connected device will not reboot in the event of an internal power supply failure.

Can a Cisco Catalyst switch revert back to its own power supply?

PS port in "active" mode again. The Cisco Catalyst E and 2960-S Series switches are capable of reverting back to their own power supplies without service interruption. Q. Can a device revert back to its own

Does Cisco Catalyst 9200 support dual field-replaceable power supplies?

Cisco Catalyst 9200 Series switches support dual field-replaceable power supplies (Figure 3). Each switch ships with one default power supply, and a second identical power supply can be purchased with the initial order or can be added later. The second power supply can provide redundancy or additional power to PoE+ ports as needed.

What is Cisco failover & how does it work?

It helps ensure uninterrupted operation and protection against device power supply failures by providing seamless failover for Cisco switches such as the Cisco Catalyst 2960-X, 2960-Plus, 2960-S, 2960, and 3750-E Series Switches and routers such as the Integrated Services Routers.

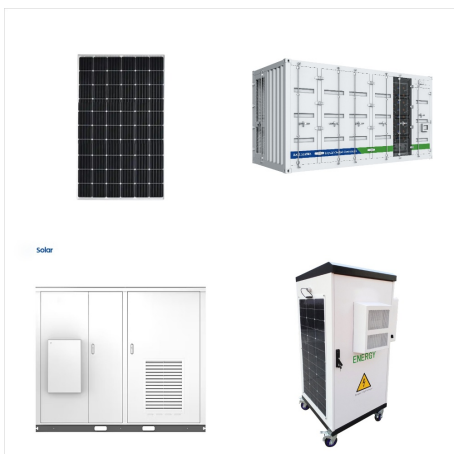
Does Cisco Express Forwarding support IP unicast?

Cisco Express Forwarding hardware routing architecture delivers extremely high-performance IP routing. Basic IP unicast routing protocols (static, RIPv1, RIPv2 and RIPv6) are supported for small-network routing applications.

CISCO REDUNDANT POWER SYSTEMS DATA SHEETS



The Catalyst 8300 Series Edge Platforms are the evolution of the ISR 4400 Series, designed for SASE, SD-WAN, and 5G-based architectures. These FAQs cover details on the platform, power, software, security, Cisco DNA SD-WAN subscription and more.



Cisco NX-OS VXLAN EVPN, Cisco IP Fabric for Media, Cisco Nexus Data Broker, and IP routed or Ethernet switched Layer-2 fabrics using a comprehensive set of unicast and multicast IPv6/IPv4 and Ethernet protocols. Purpose-built Cisco NX-OS Software operating system with comprehensive, proven innovations.



with a chassis architecture that supports up to 9 Tbps of system bandwidth and unmatched power delivery with high density IEEE 802.3bt PoE (60W and 90W). Cisco Unified Access Data Plane (UADP) 2.0 ASIC on C9400-SUP-1/1XL/1XL-Y is ready for next- Data Sheet for different uplink redundancy combinations.

CISCO REDUNDANT POWER SYSTEMS DATA SHEETS



overview. The Cisco (R) 8000 Series combines the revolutionary Cisco Silicon One ???, IOS XR (R) software, and clean sheet chassis design to deliver a breakthrough in high-performance routers. The 8000 Series comprises a full range of feature-rich and highly scalable and reliable routers. Cisco 8608 is a part of a new complimentary portfolio built on ???



The Cisco Nexus 7700 2-Slot Switch can have up to two 3- or 3.5-kilowatt (KW) power supplies. The redundant power supply configuration provides more flexibility in power redundancy configuration. The I/O module, supervisor module, and power supplies are accessible from the front, and the fan tray is accessible from the back of the chassis.



Why Should I Care About the Cisco Redundant Power System 2300? The Cisco Redundant Power System 2300 (Cisco RPS 2300) increases availability for converged data, voice, and video networks. The system delivers power supply redundancy and resiliency for a variety of switch and router power requirements, including Power over Ethernet (PoE).

CISCO REDUNDANT POWER SYSTEMS DATA SHEETS



Maximum power availability for a converged voice and data network is attainable when a Cisco Catalyst 3560 v2 series switch is combined with the Cisco Redundant Power System 2300 (RPS 2300) for protection against internal power supply failures and an uninterruptible power supply (UPS) system to safeguard against power outages.



The Cisco Compute Hyperconverged C240 M6 node family works through the Cisco Compute Hyperconverged Solution with Nutanix, which simplifies and accelerates the delivery of applications and infrastructure, at a global scale, through industry-leading flexibility, best-in-class cloud-operating models, and enhanced resiliency and support. The Cisco ???



Cisco Redundant Power System 2300 - Data Sheet/Specifications/Part Numbers. Information. The Cisco Redundant Power System 2300 (RPS 2300) increases availability for converged data, voice, and video networks. The system delivers power supply redundancy and resiliency for a variety of power requirements, including Power over Ethernet (PoE).

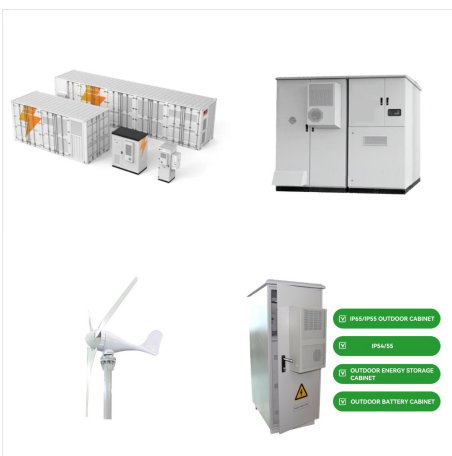
CISCO REDUNDANT POWER SYSTEMS DATA SHEETS



Rear panel. The chassis has a front-to-rear airflow. Four internal fans draw cooling air in through the front of the chassis and across the internal components to maintain an acceptable operating temperature. The fans are located at the rear of the chassis. Power. The CW9800H1 and CW9800H2 controllers ship with redundant power supply units, either AC or ???



Read this data sheet to learn the benefits, specifications, and ordering information for the Cisco 2900 Series Integrated Services Routers ISR. Redundant power on the Cisco 2900 Series is supported through the Cisco RPS 2300 Redundant Power System. You can use the Cisco RPS 2300 to provide redundant power for Cisco 2900 Series ISRs as well



This data sheet provides detailed information about the Catalyst 9600 series switches, the leading modular core platform. These switches replace the older Catalyst 6k series. This data sheet covers all hardware including chassis, line cards, supervisor engine and power supplies. Catalyst 9600 line cards and supervisor engine modules each have more detailed ???

CISCO REDUNDANT POWER SYSTEMS DATA SHEETS



The Cisco (R) Carrier Routing System (CRS) offers industry-leading performance, advanced services intelligence, environmentally conscious design, and system longevity. The Cisco CRS is powered by a chipset architecture based on multidimensional engineering and Cisco IOS (R) XR Software, a unique self-healing, distributed operating system.. Packet-based ???



This data sheet provides detailed information about the Catalyst 9600 series switches, the leading modular core platform. These switches replace the older Catalyst 6k series. This data sheet covers all hardware including chassis, line cards, supervisor engine and power supplies. Catalyst 9600 line cards and supervisor engine modules each have more detailed ???



The Cisco(R) SGE2010P 48-Port Gigabit Switch (Figure 1) allows you to expand your network securely. Web-based configuration of the switch is secured using SSL. The Cisco SGE2010P is optimized for maximum system availability, with fully redundant stacking, redundant power options, and dual images for resilient firmware upgrades. The switch

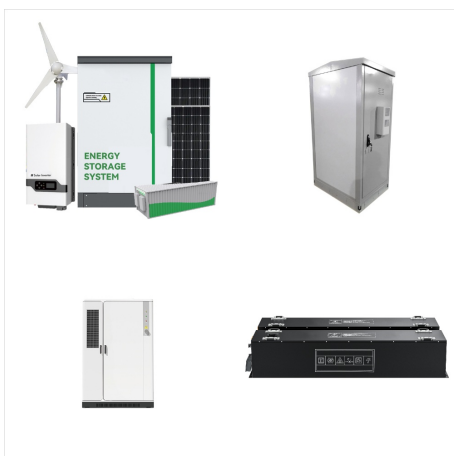
CISCO REDUNDANT POWER SYSTEMS DATA SHEETS



an uninterruptible power supply (UPS) system to safeguard against power outages. Redundant Power System The Cisco Catalyst 3750 v2 Series access switches support the new generation of Cisco RPS 2300, which increases availability in a converged data, voice, and video network by providing transparent power backup to two of six



Full Power over Ethernet Plus (PoE+) capability for up to 48 ports for C9200. Power over Ethernet Plus (PoE+) capability for up to 12 ports, IEEE 802.3bt class 6 and Cisco UPOE capability for up to 8 ports for C9200CX. Resiliency with Field-Replaceable Units (FRU) and redundant power supply, fans, and modular uplinks for C9200 models.



NCS1K14-BLANK Network Convergence System 1014 Blank card NCS1K4-AC-PSU-2 Network Convergence System 1004 AC Power Supply Unit 2.5KW NCS1K4-DC-PSU-2 Network Convergence System 1004 DC Power Supply Unit 2.5KW Warranty The following is the warranty: Hardware warranty duration: 5 years. Software warranty duration: 1 year.

CISCO REDUNDANT POWER SYSTEMS DATA SHEETS



The Cisco (R) 1100 Terminal Services Gateway provides up to 72 asynchronous ports on a single-rack-unit form factor, supporting up to 24 Layer 2 switch ports, LTE Advanced 3.0, and high availability using dual power supplies.. Product overview. The compact, high-density Cisco 1100 Terminal Services Gateway (C1100 TSG) with Cisco IOS (R) XE Software allows ???



This data sheet describes the benefits, specifications, and ordering information for the Cisco Catalyst 9200 Series Switches. With full PoE+ capability, power and fan redundancy, stacking bandwidth up to 160 Gbps, modular uplinks, Layer 3 feature support, and cold patching, Catalyst 9200 Series switches are the industry's unparalleled



This data sheet provides detailed information about the Cisco Catalyst 9600 series switches including chassis, line cards, supervisor engine and power supplies. A modern, fully programmable, model-driven network ???

CISCO REDUNDANT POWER SYSTEMS DATA SHEETS



Data Sheet Cisco Catalyst 2960-X and 2960-XR Series Switches Product Overview Redundant Power System [RPS] 2300). Dual redundant power supplies are supported on the Cisco Catalyst 2960-XR Series Switches. These switches ship with one power supply by default. The second power supply can be purchased at the time of ordering the



overview. The Cisco 8000 Series combines the revolutionary Cisco Silicon One ???, IOS XR (R) software, and a set of clean sheet chassis to deliver a breakthrough in high-performance routers.. High-performance networking systems have historically been divided into routing or switching classes, with distinct hardware and software.



Cisco and Nutanix have partnered to introduce the industry's most complete hyperconverged solution by integrating and validating Cisco servers, storage, networking, and SaaS operations with the Nutanix hybrid multicloud platform; the Cisco Compute Hyperconverged C240 M7 Node family delivers performance, flexibility, and resiliency in a high-capacity ???

CISCO REDUNDANT POWER SYSTEMS DATA SHEETS



This data sheet provides detailed information about the Catalyst 9300 series switches, the lead stackable enterprise switching platform for fixed access switches. Catalyst 9300X redundant fans and power supplies, data stack and StackPower cables are backward compatible with the Catalyst Cisco IOS XE, a modern operating system for the



Cisco Secure Firewall 3100 Series Data Sheet. Data Sheet. Save. Log in to Save Content Translations. Download. Print. DC maximum output power. 400W. 400W. 400W. 400W. 400W. DC efficiency >88% at 50% load >88% at 50% load >88% at 50% load 2 Fans operate in a 3+1 redundant configuration where the system will continue to function with only



Find out why a Cisco product has reached its end of life, what product upgrade and substitution options are available, and when these changes will take effect. EOS and EOL Notice for Cisco Redundant Power System 675 (RPS 675) 16/Apr/2007