

What does system returned to ROM by power-on mean?

For example: 1. "System returned to ROM by power-on" and "Last reset from power-on" means that router was turned on by plugging in the power cable. 2. "System returned to ROM by reset" and "Last reset from system-reset" Means that system was SOMEHOW restarted.

Why does my router not boot up in ROMMON mode?

Normally "System returned to ROM" and "Last reset from" line shows that there was some problem due to which router was rebooted and then returned to ROMMON mode. In this case the router will not boot up normally. It will always boot in rommon mode. This generally is due to software or hardware forced crash. Regards, Sushil 07-28-2005 04:35 AM

What happens if a configuration register is broken in ROMMON?

At conversion, the configuration registers remain the same until the reconfiguration of the configuration register when the conversion is complete. In this state, if the console receives a break signal, the system appears to crash as it enters ROMmon. The system exhibits the symptoms that the Introduction of this document describes.

What information does a Cisco XE switch store?

The switch stores system logging information that can be used to analyze in depth what was happening prior and after the unexpected reload event occurred. If there was a crash, the switch also stores the crash data into an encrypted file that can be analyzed by TAC experts. The trace logs are internal logs of each process within Cisco IOS®; XE.

What happens if a Catalyst 6500/6000 enters ROMMON diagnostic mode?

A Catalyst 6500/6000 with an SP configuration register that allows break, for example 0x2, and that receives a console break signal enters ROMmon diagnostic mode. The system appears to crash. This example switch output indicates that the switch entered ROMmon diagnostic mode from a switch processor console break signal:

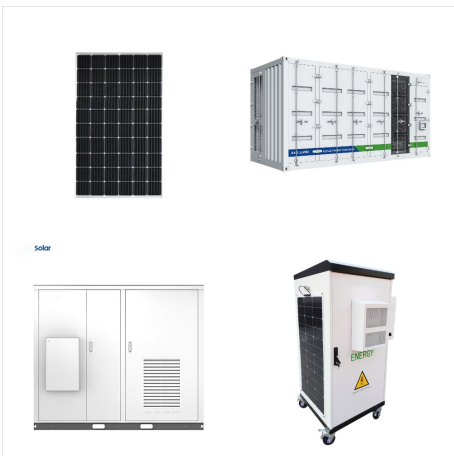
CISCO SWITCH SYSTEM RETURNED TO ROM BY POWER-ON



System returned to ROM by power-on. Cause: the router encountered a power outage, was manually power cycled or its power supply became deficient. Solution: verify the status of the power supply with the "show environment" and the syslogs (a failing power supply will typically be reported) and if failing, replace it. If the power supply works

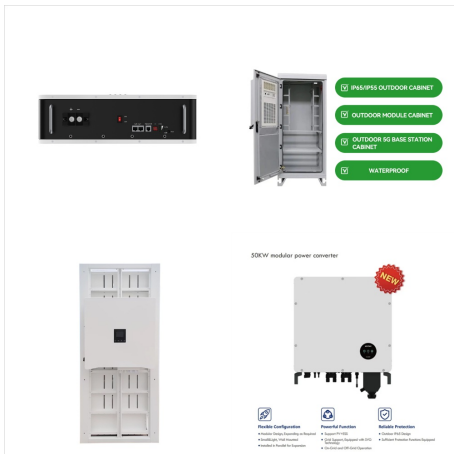


ROM: 12.2(31r)SGA2. Dagobah Revision 226, Swamp Revision 34 . 4500 uptime is 1 hour, 6 minutes. System returned to ROM by watchdog timer expired. System restarted at 09:21:23 UTC Tue Aug 5 2014. System image file is "bootflash:cat4500-ipbase-mz.122-52.SG.bin" cisco WS-C4503-E (MPC8245) processor (revision 10) with 262144K bytes of memory.



System returned to ROM by Critical process cman_fp fault on fp_1_0 (rc=139) System restarted at 10:58:45 EETDST Thu Sep 24 2020 System image file is "bootflash:packages nf" Last reload reason: Critical process cman_fp fault on fp_1_0 (rc=139) The switch is a 9407R running IOS version Cisco IOS XE Software, Version 16.09.03.

CISCO SWITCH SYSTEM RETURNED TO ROM BY POWER-ON



Hello, We recently had one of our ASR1001 router getting reloaded automatically. The show version command output shows the last reload reason as LocalSoft. Uptime for this control processor is 2 hours, 31 minutes System returned to ROM by reload at 10:17:08 CET Tue Apr 9 2013 System restarted at 0



ROM: 12.2(31r)SGA1 Pod Revision 14, Force Revision 31, Tie Revision 32. uptime is 20 hours, 55 minutes Uptime for this control processor is 20 hours, 55 minutes System returned to ROM by power-on System restarted at XXX System image file is "bootflash:cat4500-ipbasek9-mz.122-50.SG1.bin" This product contains cryptographic features and is

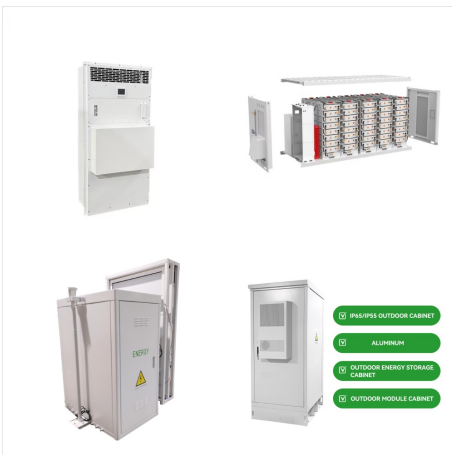


I have a similar issue with this bug:
PID:WS-C2960S-24TS-L software:Version 12.2(55)SE3 ???Version 15.2(2)E9 they will silense reload after a few days,and dispaly the "System returned to ROM by power-on" by "show version" command. eg: ----- show version ----- Cisco IOS Software, C2960S Software (C2960S-UNIVERSALK9-M), Version 12.2(55)SE3

CISCO SWITCH SYSTEM RETURNED TO ROM BY POWER-ON



System returned to ROM by power???on (SP by abort) A mismatch of the configuration register settings can cause this type of reload. Specifically, you can set the This document is restricted to Catalyst 6500/6000 switches that run Cisco IOS Software. The information in this document was created from the devices in a specific lab environment



ROM: 12.2(31r)SGA1. Pod Revision 14, Force Revision 31, Tie Revision 32. sw-sa-Core_Obala1 uptime is 13 hours, 36 minutes. System returned to ROM by abort at PC 0x0. System restarted at 18:35:41 MET Sun Feb 2 2014. System image file is "bootflash:cat4500-entservicesk9-mz.150-2.SG.bin" This product contains cryptographic features and is subject



_IOS switched to active is 31 minutesSystem returned to ROM by power-on (SP by abort at PC 0x601061A8) System image file is "slot0:c6sup12-ps-mz.121-13.E14" cisco Catalyst 6000 (R7000) processor with 227328K/34816K bytes of memory.Processor board ID SAD053701CFR7000 CPU at 300Mhz,

CISCO SWITCH SYSTEM RETURNED TO ROM BY POWER-ON



Introduction The Cisco Virtual Switching System is a clustering technology that pools two Cisco Catalyst 4500-E Series Switches with Cisco Catalyst Supervisor Engine 7-E or 7-LE or two Catalyst 4500-X Series Switches into a single virtual switch. SG7 System returned to ROM by power-on SW1#sh license image levels Module name Image level



System Returned to ROM by Power-on (SP by Abort) A Catalyst 6500/6000 with an SP configuration register that allows break, for example 0x2, and that receives a console break signal enters ROMmon diagnostic mode. The system appears to crash. Upgrade the switch to Cisco IOS Software Release 12.2(18r)SX05 or later.



System returned to ROM by power-on. System image file is "bootflash:cat4500e-lanbase-mz.122-53.SG4.bin" cisco WS-C4506-E (MPC8548) processor (revision 12) with 524288K bytes of memory. Config Switch 2: show version. Cisco IOS Software, Catalyst 4500 L3 Switch Software (cat4500e-LANBASE-M), Versi.

CISCO SWITCH SYSTEM RETURNED TO ROM BY POWER-ON



BOOTLDR: System Bootstrap, Version 17.10.1r,
RELEASE SOFTWARE (P) Switch uptime is 3
hours, 14 minutes System returned to ROM by
Reload Command Last reload reason: Reload
Command Next reload AIR license Level: AIR DNA
Advantage Switch Ports Model SW Version SW
Image Mode Configuration register is 0x102 (will be
0x2102 at next reload) Onboard



It's Cisco 6509 switch. Bellow is the output of
"remote command switch show nvlog" 01.
01/22/2010 02:01:45: pf_redun_negotiate:Initialized
as ACTIVE processor. System returned to ROM by
power cycle at 18:26:09 CST Tue Aug 16 2011 (SP
by power on) System restarted at 20:01:06 CST
Sun Dec 8 2013.

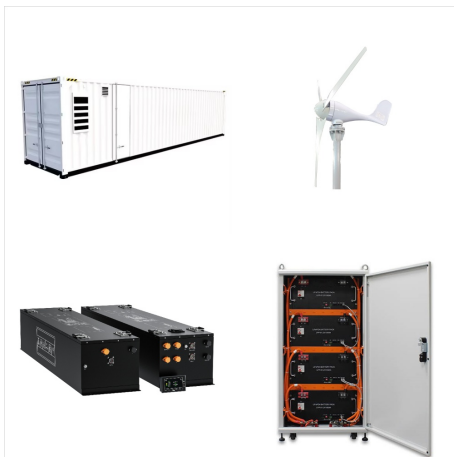


System Returned to ROM by Power-on (SP by
Abort) When a fan tray fails or a power supply is
turned off, the Cisco Catalyst Switches that run
Cisco IOS Software Release 12.1(19)E1 might
crash the Supervisor modules. The issue is
documented in Cisco bug ID CSCeb51698
(registered customers only). Upgrade the switch to
the Cisco IOS

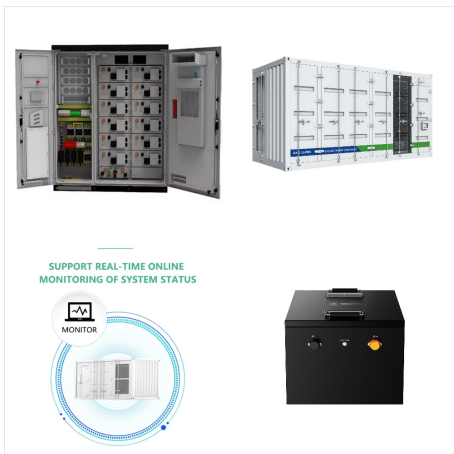
CISCO SWITCH SYSTEM RETURNED TO ROM BY POWER-ON



Hi Every time when i restrat the cisco switch 4948 it is going in rommon mode then in rommon#boot After enterning boot the ios of switch is working fine the output of show version is shown below Core#sh version Cisco IOS Software, Catalyst 4500 L3 System returned to ROM by power-on System restarted at 04:34:17 UTC Sun Jan 24 2016 System



If it just says returned to ROM by reload it is probably pretty safe to assume that someone entered a command to cause the reload. There are also situations where it says returned to ROM by reload with some additional verbiage like this: System returned to ROM by unknown reload cause - reason ptr 0xBFC3C0EC, PC 0x604



System returned to ROM by power cycle at 23:31:24 PDT Thu Sep 27 2007 (SP by power on) System restarted at 07:20:12 IST Fri Jun 5 2015 System image file is "bootdisk:c7600s72033-advipservicesk9-mz.122-33.SRE8.bin" Last reload type: Normal Reload ***** where it's showing the Reload was normal reload. system restarted time was 07:20:12 ???

CISCO SWITCH SYSTEM RETURNED TO ROM BY POWER-ON



Cisco IOS Software, C3560 Software (C3560-IPBASEK9-M), Version 12.2(52)SE, RELEASE SOFTWARE (fc3). Gee. All it took was to read the first line of your attachment Upgrade your switch to a more stable IOS version, like 12.2(55)SE9.



System Returns to ROM by Unknown Reload Cause . Cisco Catalyst 6000/6500 ???show version , ? 1/4 ? System returned to ROM by unknown reload cause - suspect boot_data[BOOT_COUNT] 0x0, BOOT_COUNT 0, BOOTDATA 19 (SP by power-on)

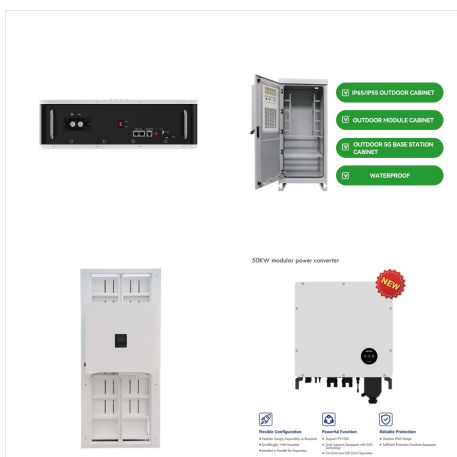


ROM: Bootstrap program is C2960X boot loader
BOOTLDR: C2960X Boot Loader (C2960X-HBOOT-M) Version 15.2(6r)E, RELEASE SOFTWARE (fc1) Switch uptime is 2 minutes
System returned to ROM by power-on System restarted at 00:40:50 UTC Fri Feb 22 2019 System image file is "usbflash0:c2960x-universalk9-mz.152-4.E7.bin"
Last reload reason: power-on

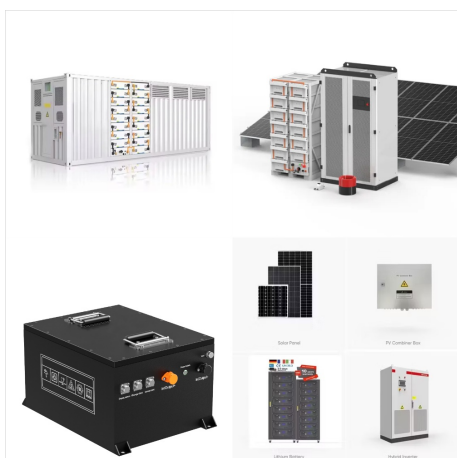
CISCO SWITCH SYSTEM RETURNED TO ROM BY POWER-ON



System returned to ROM by Power Failure System image file is "flash:packages nf" Last reload reason: Power Failure Switch 1: SYSTEM TEMPERATURE is OK I'm experiencing a switch WS-C3650-24T reload with the last reason of "Power Failure" but there was no actual power issue. 3650#show version Cisco IOS Software, IOS-XE Software, ???



One of our 7206 have problems with self-boot. Some says that the message system returned to ROM by power-on means that someone have physically booted the router or the we've had loss of power. Is this true or can there be other explanations for the outline in sh version? The sh log shows this msg: No More free buffer in vnm_dsprn_free_msg_Q



cat6knative#show power system power redundancy mode = redundant system power total = 27.460A system power used = 25.430A system power available = 2.030A FRU-type # current admin state oper power-supply 1 27.460A on on power-supply 2 27.460A on on module 1 3.390A on on module 2 3.390A on on module 3 5.500A on on module 5 3.090A on on ???