

What are the different types of solar panels?

Solar Panels Grades A, B, and C (Explained) - Solar Panel Installation, Mounting, Settings, and Repair. Different kinds of solar panels are better suited to different environments. The expensive monocrystalline panels vs. the cheaper polycrystalline or the easy-to-install thin-film solar panel may be the best for your needs.

Are class 1 Division 2 solar panels safe?

Class 1 Division 2 (C1D2) solar panels are designed to be used safely in environments where flammable gases, vapors, or liquids may occasionally be present in sufficient quantities to produce an explosion or fire.

What is a Class A solar panel?

Class A is the creme de la creme of PV solar protection and fire resistance ratings. These modules have passed the most stringent fire tests, including the ASTM E84 and UL 790 tests, and are the least likely to ignite or spread flames.

Are class C solar panels fire resistant?

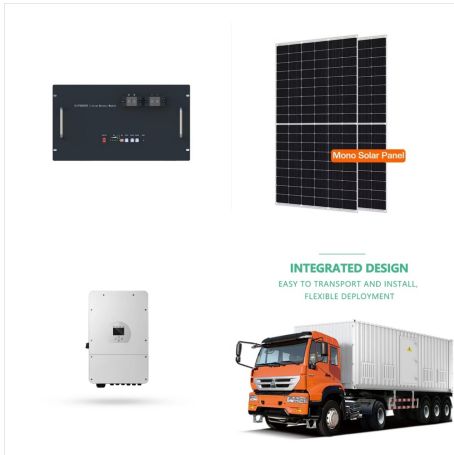
When it comes to PV solar protection, modules rated Class C offers the least level of fire resistance, making them the most prone to ignite or spread flames. Overall, Class C modules undergo less rigorous fire tests than Class A and B modules.

Are class B solar panels fire resistant?

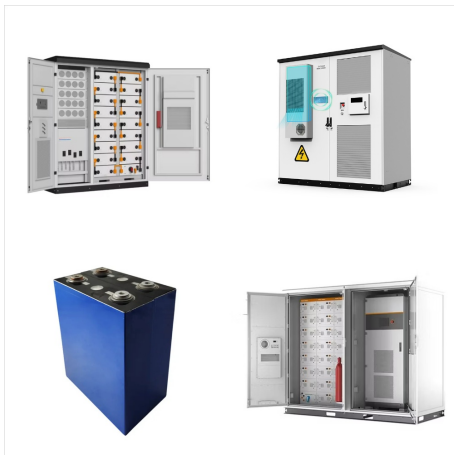
When it comes to PV solar protection, the Class B rating sits in the middle, providing a moderate level of fire resistance in comparison to Class A modules. Although not subject to the same extensive fire tests as Class A modules, modules with Class B ratings still offer decent fire protection standards.

What are Tier 2 solar panels?

'Tier 2 solar panels' is a term that's used to describe all solar panels that are not Tier 1. BloombergNEF only created criteria used to identify Tier 1 solar companies. As such, there are no official lists of Tier 2 or Tier 3 solar companies.



3. Grade C solar cells. A Grade C solar cell has visible defects, and the electrical data are off-spec. All solar cells with defects worse than Grade B can be classified as Grade C. Or. A solar cell can be graded as C when the partly broken cell which could be cut into smaller pieces and re-used.



W 12V 4-battery Class 1 Division 2 solar panel system pricing. NEMA 4 control enclosure. Expert advice with over 20 years of C1D2 experience. SES MAPPS Class 1 Division 2 Solar System. Model Number: MAPPS-300 ???



HazLoc Class 1 Division 2 (C1D2) Off-Grid Solar Power Systems for Hazardous Locations Panel arrays range from 5 - 790W; Battery capacities range from 32 - 400AH; Systems available in 12V or 24V DC; Batteries are maintenance-free ???



Taxpayer's income for the tax year (excluding the income from the solar panels included in Class 43.2) n/a: \$100: Net income from solar panels included in Class 43.2: n/a: \$30: Taxpayer's income from all sources for the tax year: n/a: \$130: Deduction of limited CCA because of the application of the specified energy property rules (\$30) (\$30)



The REC Alpha Pure 2 panels are compatible with a wide range of solar inverters and mounting systems, facilitating easy integration into new or existing installations. With a module current of 10.74 A, these panels are suitable for use with module-level power electronics (MLPE) devices, such as microinverters and power optimizers.



J.2 Development is not permitted by Class J(a) or (b) if??? E+W (a) the solar PV equipment or solar thermal equipment would be installed on a wall and would protrude more than 0.2 metres beyond the plane of the wall when measured from the perpendicular with the external surface of the wall; (b) the solar PV equipment or solar thermal equipment would be installed on a wall and within ???



Solar Electric Supply specializes in supplying dealer, contractor, government and industrial accounts worldwide with reliable, cost-effective Class I Div II solar electric power solutions. Class 1 Division 2 Solar Systems ? Contractor ???



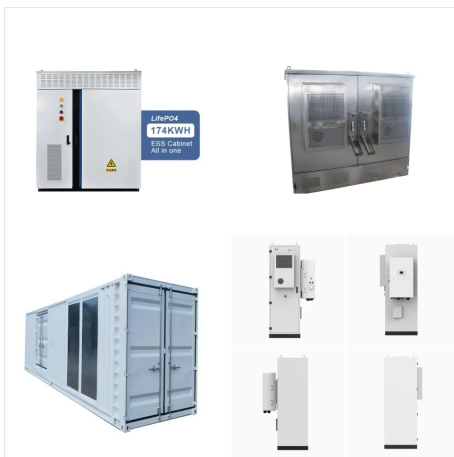
Class 1 Division 2 Solar Panel Systems. Complete PV systems that include everything you need to power your remote equipment: solar panel, mounting structure, wiring harness, battery enclosure, charge controller, sealed battery, installation manual and expert support.



Differentiating A, B, C, and D Grades of Solar Panels Solar panels are categorised into grades ranging from A to D, with the A-grade bracket further divided into A+ and A-. Understanding the grade of a solar PV panel is crucial in determining its quality and performance. In this article, we will provide an overview of the various solar panel



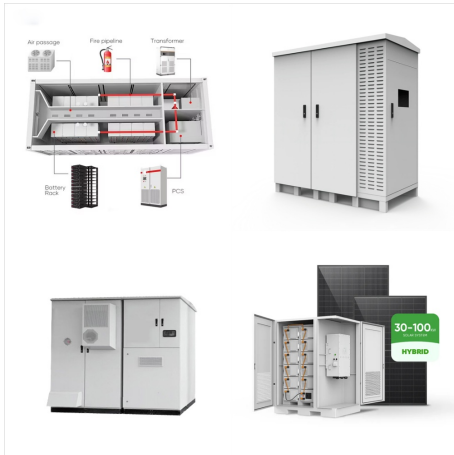
When it comes to PV solar protection, modules rated Class C offers the least level of fire resistance, making them the most prone to ignite or spread flames. Overall, Class C modules undergo less rigorous fire tests than ???



Required tests for System Fire Class Rating of PV Module or Panel with Mounting System in Combination with Roof Coverings???Table 31.2  
Test Tests Over Representative Roof Coverings  
Class AClass BClass C Spread of Flame On Top Surface of Module or Panel(Section 31.1.2)a Flame Spread less than



High efficiency Class I Div II Certified industrial duty solar panels with 20+ year warranty Heavy???duty aluminum pole mounting structure with stainless steel hardware for 2???4" pole sizes, high wind speed option NEMA 3R UL Listed durable powder???coated white aluminum



Home > Solar Panels > Fixed Frame Solar Panels > Class 1 Div 2 Solar Panels. Class 1 Div 2 Solar Panels. These panels have been certified by the CSA . Laboratory to meet UL1703 standards and are for use in Class 1, Division 2 hazardous environments. These designs use a 30/35mm Frame with Large Conduit-Ready Junction Box.



The SES-180J-24 is a 24V solar panel designed and certified for Class 1 Div 2 Hazardous Locations. It is ideal for longevity outdoors; with an anodized aluminum frame and tempered glass face. It is ideal for longevity outdoors; with an anodized aluminum frame and tempered glass face.



Class B. effective against moderate fire test exposure; flame spread should not exceed 8 feet; Class C. UL 1703 and UL 61703 standards address hail storms, by dropping 2-inch solid steel spheres on solar panels from a height of 51 inches, and by firing 1-inch ice balls on PV panels with a pneumatic cannon to simulate hail impacts.



Class 1 Division 2 Solar Panel Systems. Complete PV systems that include everything you need to power your remote equipment: solar panel, mounting structure, wiring harness, battery enclosure, charge controller, sealed battery, installation manual and expert support.



The SES 4200J-V 200 Watt solar panel is part of SES's rugged industrial off grid series. These high quality Class 1 Div 2 certified solar modules provide cost-effective photovoltaic power for DC loads with very high energy requirements. ???



Class 1 Division 2 Solar Panel Systems. Complete PV systems that include everything you need to power your remote equipment: solar panel, mounting structure, wiring harness, battery enclosure, charge controller, sealed battery, installation manual and expert support.



W 12V 4-battery Class 1 Division 2 solar panel system pricing. NEMA 4 control enclosure. Expert advice with over 20 years of C1D2 experience. SES MAPPS Class 1 Division 2 Solar System. Model Number: MAPPS-300-396-12-C1D2: Nominal System Voltage: 12 VDC: Solar PV Module: 2X SES 150J 12 Vdc 150 Watts.



This line of Ameresco solar panels is certified to UL 1703 & ULC1703 for safety and certified by for use in Class 1 Division 2 hazardous locations. They feature rugged material and construction with time-tested and proven technology. These reliable solar PV modules are the direct result of over three decades of design, manufacturing, and practical application in the field.



Class 1 Division 2 Solar Panel Systems. Complete PV systems that include everything you need to power your remote equipment: solar panel, mounting structure, wiring harness, battery enclosure, charge controller, sealed battery, installation manual and expert support.



The 4x4 chassis comes with on-demand, four-wheel drive and all-terrain tires for adventure without compromise. The camper van's lithium battery system boasts 210 amp hours for a 10.2 kilowatt-hour stored power and 200 watts of roof-mounted solar panels to keep your system topped off during the day. The Launch also has a 3500-watt inverter.



The SES 150J has a weatherproof junction box and a very rugged frame. The standard terminals accept 8 AWG to 14 AWG wire. The raintight (IP65 Rated) junction box of the SES 140J accepts PG13.5 or 1/2" nominal conduit or cable fittings. With its four-terminal connection block, it enables most system array connections (putting modules in series or parallel) to be made right ???



Class 1 Division 2 Solar Panel Systems. Complete PV systems that include everything you need to power your remote equipment: solar panel, mounting structure, wiring harness, battery enclosure, charge controller, sealed battery, installation manual and expert support.



The three main types of solar panels are monocrystalline, polycrystalline, and thin film. Monocrystalline solar panels are the most efficient. Polycrystalline solar panels can be the most cost-effective. Thin-film solar ???



When comparing solar panels, it is important to consider output wattages, total capacity and power output. The production output of solar panels varies depending on a number of factors, such as where you live (number of ???)



An "Air Mass" of 1.5; A "Solar Irradiance" of 1000 Watts per square meter (W/m<sup>2</sup>) And a "Solar Cell Temperature" of 25°C. Manufacturers measure various aspects of a solar panel's output under these STCs and provide this information as solar panel ratings.



? Pros 92% guaranteed end-of-warranty panel output 25-year product warranty and power production guarantee High-efficiency panels with ratings up to 22.8% Cons Panel availability varies by ZIP code Panels sold by SunPower installers and authorized dealers only Priced higher than other panel manufacturers, according to customer reviews



The SES 4200J-V 200 Watt solar panel is part of SES's rugged industrial off grid series. These high quality Class 1 Div 2 certified solar modules provide cost-effective photovoltaic power for DC loads with very high energy requirements. With 72 monocrystalline cells in series, this panel charges batteries efficiently in any climate. The SES 4200J-V is intended for 24VDC, 48VDC ???



(c) the surface area of the solar panels forming part of the stand-alone solar would exceed 9 square metres or any dimension of its array (including any housing) would exceed 3 metres. Conditions. B.2 Development is permitted by Class B subject to the following conditions???



The rugged SLP020-12 poly-crystalline solar panel is CSA Certified to UL1703 and cUL1703 and Certified for C1D2 - Class 1, Division 2 Hazardous Environments. All the models feature a 2" rugged aluminum mounting frame with a conduit-ready sealed junction box and easy to identify wiring terminals.