

What is the significance of Heard Island & McDonald Islands?

Heard Island and the McDonald Islands, with the Kerguelen Islands, are exposed parts of the Kerguelen Plateau, possibly the largest submarine plateau on earth, and provide geochemical and isotopic insights into the formation of oceanic plateaux, mantle plume development and the separation of Australia, India and Africa from Antarctica.

Are Heard and McDonald Islands volcanoes?

Heard and the McDonald Islands are young oceanic-island volcanoes which, together with the Kerguelen Islands 466 km to the northwest, are the only subaerial expressions of the dominantly volcanic and relatively shallow northern part of the submarine Kerguelen Plateau which has a geological history extending over 115 Ma (Davies et al. 1989).

What is the difference between Heard and McDonald Islands?

The geological histories of Heard and the Kerguelen Islands extend over the last 50 Ma while the McDonald Islands are very young, perhaps having formed within the last 100 000 years.

What causes McDonald Islands emissions?

The McDonald Islands emissions may be linked to either faults or submarine extensions of subaerial geothermal systems, such as those observed subaerially on the islands (McIvor, 2007; Quilty & Wheller, 2000; Stephenson et al., 2005).

How big is Heard Island & McDonald Islands?

The group's overall land area is 372 km<sup>2</sup> (144 sq mi) and it has 101.9 km (63 mi) of coastline. Discovered in the mid-19th century, the islands lie on the Kerguelen Plateau in the Indian Ocean and have been an Australian territory since 1947. Heard Island and McDonald Islands contain Australia's only two active volcanoes.

Where are Heard Island and McDonald Islands located?

The islands are a territory (Territory of Heard Island and McDonald Islands) of Australia administered from Hobart by the Australian Antarctic Division of the Australian Department of Climate Change, Energy, the

# COGENERATION ENERGY SYSTEM HEARD AND MCDONALD ISLANDS



Environment and Water.



? 1/4 ? Heard Island and McDonald  
Islands??? HIMI? 1/4 ?, 1600??? 1947??? ,,,,



????? 1/4 ??????????????????????<???? (?????  
1/4  
????????????????????????????????<????????????????  
????? Heard Island and McDonald Islands ? 1/4  
? HIMI) ??????????????<????????????????????  
1947????????? 1/4 ?????????(C)?????????  
1997????????????????????????????(R)? 1/4 ?? 1/4  
???<????????????????



Public consultation paper 1 Purpose of this  
document The Proposal to expand Heard Island and  
McDonald Islands Marine Reserve ??? Public  
consultation paper ("proclamation proposal") has  
???

# COGENERATION ENERGY SYSTEM HEARD AND MCDONALD ISLANDS



The Bexbach Cogeneration Plant ??? Battery Energy Storage System is owned by STEAG (100%), a subsidiary of Kommunale Beteiligungsgesellschaft. The key applications of the project are frequency regulation and grid support services.



: Heard Island and McDonald Islands Marine Reserve Management Plan 2014???2024. Department of the Environment, Canberra 2014, ISBN 978-1-876934-25-5 (englisch, online [PDF; 4,5 MB]). Heard Island & McDonald Islands. Offizielle Website. Australian Government ??? Department of the Environment and Energy ??? Australian Antarctic Division (englisch).

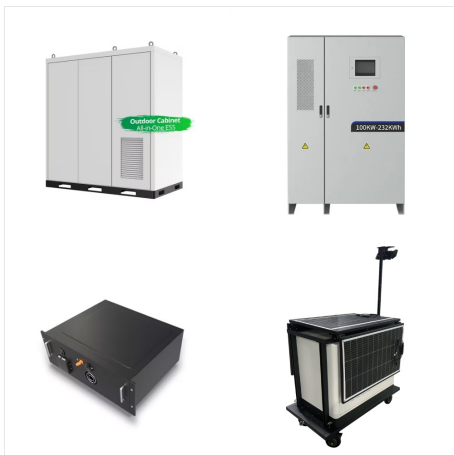


Along with the French Kerguelen group of islands 440 km to the northwest, Heard and McDonald Islands form the only exposed parts of the submarine Kerguelen plume (Australian Government 2016). Their recent volcanism may correspond to the Tertiary hot spot track of the Kerguelen plume, which belongs to the large igneous province of the Southern

# COGENERATION ENERGY SYSTEM HEARD AND MCDONALD ISLANDS



Heard Island and the McDonald Islands, with the Kerguelen Islands, are exposed parts of the Kerguelen Plateau, possibly the largest submarine plateau on earth, and provide geochemical and isotopic insights into the formation of oceanic plateaux, mantle plume



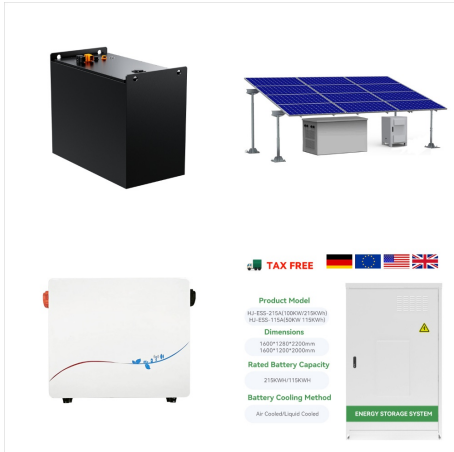
Named after individual people: Captain John Heard, American sealer who sighted the island on 25 November 1853 & Captain William McDonald, who discovered the McDonald Islands close to Heard Island six weeks later, on 4 January 1854



Public consultation paper 1 Purpose of this document The Proposal to expand Heard Island and McDonald Islands Marine Reserve ??? Public consultation paper ("proclamation proposal") has been prepared to support public consultation on the proposed design of an expanded Heard Island and McDonald Islands (HIMI) Marine Reserve.



# COGENERATION ENERGY SYSTEM HEARD AND MCDONALD ISLANDS



The islands are a territory (Territory of Heard Island and McDonald Islands) of Australia administered from Hobart by the Australian Antarctic Division of the Australian Department of Climate Change, Energy, the Environment and Water.



Heard Island and the McDonald Islands, with the Kerguelen Islands, are exposed parts of the Kerguelen Plateau, possibly the largest submarine plateau on earth, and provide geochemical and



of species of albatrosses, penguins and petrels that breed on Heard Island (Crawford et al., 2017; Rodriguez et al., 2019). However, the last recorded incidence of an IUU fishing vessel in the Heard Island and McDonald Islands Exclusive Economic Zone was more than a decade ago (IUCN Consultation, 2020a). Residential Areas

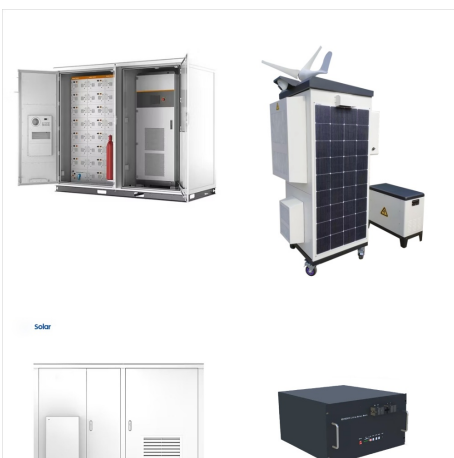
# COGENERATION ENERGY SYSTEM HEARD AND MCDONALD ISLANDS



Heard Island and McDonald Islands in the Southern Ocean A map of Heard Island and McDonald Islands. Heard Island, by far the largest of the group, is a 368-square-kilometre (142 sq mi) mountainous island covered by 41 glaciers [21] (the island is 80% covered with ice [1]) and dominated by the Big Ben massif has a maximum elevation of 2,745 metres (9,006 ft) at ???



Heard Island and the McDonald Islands, with the Kerguelen Islands, are exposed parts of the Kerguelen Plateau, possibly the largest submarine plateau on earth, and provide geochemical ???



Heard Island and McDonald Islands (HIMI) are a remote subantarctic island group located about 4,000 km south-west of Western Australia and approximately 1,700 km from the Antarctic continent. The HIMI exclusive economic zone (EEZ) abuts the French EEZ around the Kerguelen Islands.

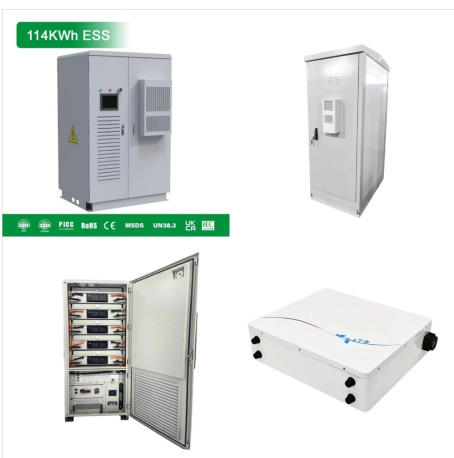
# COGENERATION ENERGY SYSTEM HEARD AND MCDONALD ISLANDS



Microgrids combine the advantages of renewable energy sources with the stability of conventional power generation systems such as cogeneration modules and diesel gensets. Designed for a variety of applications, microgrids can help you reach targets for energy independence, grid stability, and sustainability.



Eco-friendly MWM cogeneration power plants with combined heat and power enable decentralized, economical and energy-efficient power production. Container Cogeneration Plant Available for TCG 3016, TCG 3020 and TCG 2020 gas engines.



Heard Island is 43 km long and 21 km wide. McDonald Islands are a group of uninhabited rocky islets, 40 km west of Heard Island (Encyclopaedia Britannica 2006). Heard Island has approximately 362.5 km<sup>2</sup> of area and the McDonald Island, 2.6 km<sup>2</sup>. The site includes the adjacent offshore rocks and shoals and all territorial waters to a distance of 12 nautical ???

# COGENERATION ENERGY SYSTEM HEARD AND MCDONALD ISLANDS



? 1/4 ? Heard Island and McDonald  
Islands??? HIMI? 1/4 ?, 1600??? 1947??? ???



CEM Engineering (Cogeneration and Energy Management) was established in 2001 by Martin Lensink. For many years throughout CEM's history, we have focused on cogeneration projects. While cogeneration remains one of our core competencies, CEM is also focused on post carbon technologies and helping reduce CO<sub>2</sub>.