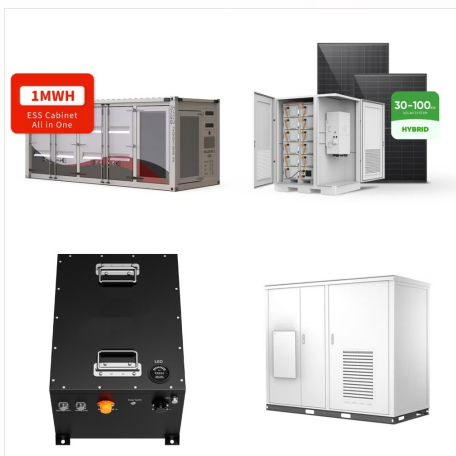




Commercial solar energy, also known as photovoltaic (PV) energy, utilizes solar panels and systems to generate electricity for commercial, industrial, or municipal applications. Commercial solar systems are specifically designed ???



Factors that Influence the Price of Commercial Solar Systems. The tax credit is currently set at 30% of the total cost for solar photovoltaic systems (PV) installed during the current tax period. In December 2020, Congress extended the ITC, ???



With over 15 years of experience helping companies of all sizes move to profitable and clean renewable energy, our commercial solar solutions deliver higher energy yield, lower future expenses, greater reliability, and ???

COMMERCIAL SOLAR PHOTOVOLTAIC SYSTEMS



The PV array can be directly coupled to the grid without any storage system and is called "Utility-Interactive PV System or Grid-Tied PV System," as illustrated in Figure 1.10. Alternatively, it can store excess energy into battery banks for later use, and in this case, it is called a "Bimodal PV System or Battery Backup PV System," as



Commercial solar systems cost an average of \$1.66 per watt, or roughly half the price of residential systems. Organizations going solar enjoy many benefits and incentives: the solar tax credit, electric bill offset, MACRS depreciation, a quick ???

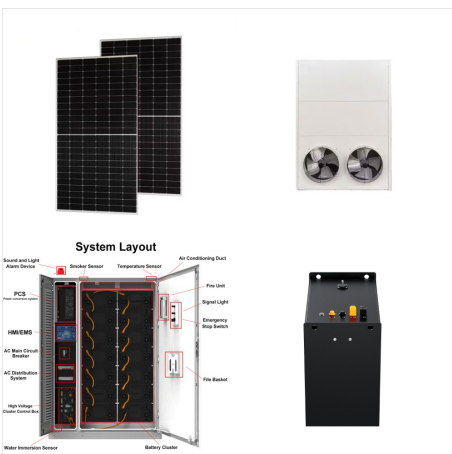


Most commercial grade solar panels have at least 96 solar photovoltaic cells per panel, as compared to 60 or 72 cells for residential solar panels. Commercial and industrial solar applications tend to favor a white backsheet and silver frame, both of which slightly increase efficiency (by about 1% to 2%). Commercial solar power systems

COMMERCIAL SOLAR PHOTOVOLTAIC SYSTEMS



Commercial solar panels refer to photovoltaic (PV) systems designed specifically for businesses, industries, and large-scale enterprises to generate electricity from sunlight. These solar panels are installed on ???



Solar photovoltaic systems that contain rapid shutdown in accordance with both Items 1 and 2 of Section CS512.5.1 (IFC 1204.5.1) or solar photovoltaic systems where only portions of the systems on the building contain rapid shutdown, shall provide a detailed plan view diagram of the roof showing each different photovoltaic system and a dotted



Commercial solar panels typically include 72 solar cells and measure up to 6 feet wide (78 inches long by 39 inches wide). As with residential solar panels, commercial models are between 1.5 to 2 inches deep. Most 72 ???

COMMERCIAL SOLAR PHOTOVOLTAIC SYSTEMS



Solar Installed System Cost Analysis. NREL analyzes the total costs associated with installing photovoltaic (PV) systems for residential rooftop, commercial rooftop, and utility-scale ground-mount systems. This work has grown to include cost models for solar-plus-storage systems.



Environmental Benefits of Commercial Solar Panels. Commercial solar installations have the potential to offset hundreds, if not thousands, of the metric tons of carbon dioxide emitted by conventional energy generation. For example, a 50-kW commercial system will produce an estimated 65,000 kWh of clean energy per year.



We carefully select commercial solar panels, inverters, and monitoring systems that deliver optimal performance, durability, and long-term reliability. With our cutting-edge technology, you can trust that your commercial or government ???

COMMERCIAL SOLAR PHOTOVOLTAIC SYSTEMS



Commercial solar installations often use larger panels with 72 or more photovoltaic cells. The photovoltaic effect explained: how solar cells produce electricity. While all quotes involve solar panels made from photovoltaic cells, panel output can change based on equipment quality. If you are specifically interested in seeing quotes for



Schools can install commercial-scale solar systems. Commercial solar is the term used to describe solar panel installations in the commercial and industrial (C& I) sector. It is a broad category that covers all solar power use outside of the residential scale (solar panels for home) or the utility scale solar (solar power plants aka solar farms)



Solar photovoltaic modules are where the electricity gets generated, but are only one of the many parts in a complete photovoltaic (PV) system. sensors, and motors, and support grid-integrated efficient building applications, like electric vehicle charging. BIPV systems still face technical and commercial barriers to widespread use, but

COMMERCIAL SOLAR PHOTOVOLTAIC SYSTEMS



A commercial solar PV system uses solar panels installed on commercial buildings to harness solar energy and produce power. Depending on the size of the installation, the power produced covers most of the company's ???



Solar Photovoltaic (PV) System Components. Dr. Ed Franklin. Introduction. Solar photovoltaic (PV) energy systems are made up of . different components. Each component has a specific role. commercial-sized combiner box supporting several strings. Figure 6. Three strings of 10 PV modules, each rated at 35.4 volts max power (V_{mp}) and 4.95 Amps

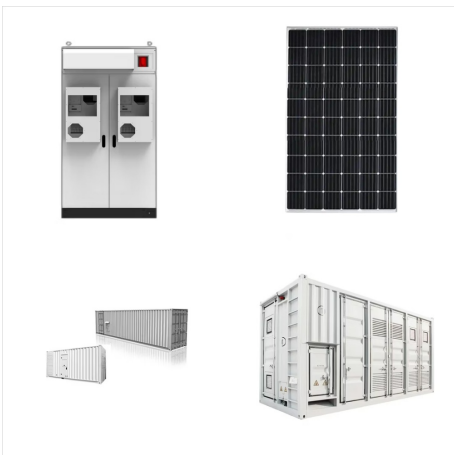


Commercial Applications. Retail. Industrial. Logistics Centers. Public Buildings action to maximize savings. It monitors how much energy is consumed by the store's lighting, HVAC, and refrigeration systems. Designed for safety and cybersecurity The SolarEdge solution for solar-powered retail stores includes PV harvesting on the roof

COMMERCIAL SOLAR PHOTOVOLTAIC SYSTEMS



, Melink Solar has been helping the commercial industry produce power at a lower cost, with a goal of mainstreaming Net Zero energy buildings. We partner with businesses and developers to design and build innovative solar PV systems of all sizes ??? from 100 kW to 30 MW ??? including ground-mounted, roof-mounted, and solar canopy arrays.



Better financing options, a variety of incentives, and the decreasing price of commercial systems, ??? the cost to install an on-site commercial solar PV system has fallen by 63 percent over the last decade ??? have helped spur this growth. SEIA also notes that companies that have already installed solar energy are adding even more.



Commercial solar panels refer to photovoltaic (PV) systems designed specifically for businesses, industries, and large-scale enterprises to generate electricity from sunlight. These solar panels are installed on commercial rooftops, parking structures, or ground-mounted arrays to harness solar energy efficiently.

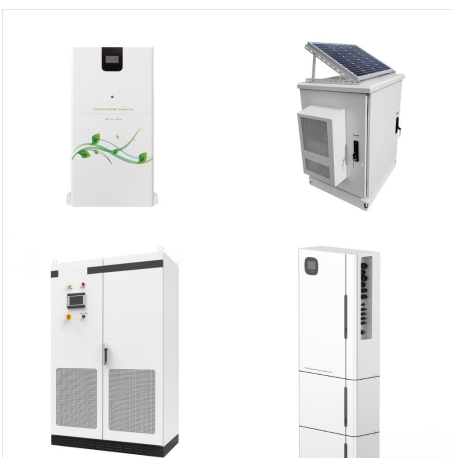
COMMERCIAL SOLAR PHOTOVOLTAIC SYSTEMS



Solarsense specialise in commercial solar panels and provide UK businesses with a turn-key design, installation and maintenance service for solar panels. Solar panels offer a means to considerably reducing your organisations" carbon footprint. A typical 250kWp solar PV system will offset approximately 64 tonnes of CO₂ ??? the equivalent



Advantages of photovoltaics for companies. Lower energy costs ??? Self-produced solar power is extremely cost-effective and reduces the need for expensive grid power; Reduce CO₂ ??? Photovoltaics are a cost-effective means of implementing CO₂ targets.; Invest strategically ??? Sustainable energy supply is a topic that can have a positive impact in communications.



Backed by the world's biggest insurers, SolarEdge Commercial uses exclusive SafeDC technology to meet and exceed current safety requirements, ensuring the protection of people & property. And with our patented Power Optimizers attached to every module on the roof, businesses can see 10% more power over the system's lifetime.

COMMERCIAL SOLAR PHOTOVOLTAIC SYSTEMS



Discover the benefits of customizable Ground Mount solar systems for commercial properties. Explore cost-effective and efficient design options now. We are enthusiastic about solar because it generates power all the way through midnight during the 24-hour daylight summer months. Plus, it costs less and requires far less maintenance than



New PV installations grew by 87%, and accounted for 78% of the 576 GW of new renewable capacity added. 21 Even with this growth, solar power accounted for 18.2% of renewable power production, and only 5.5% of global power production in 2023 21, a rise from 4.5% in 2022 22. The U.S.'s average power purchase agreement (PPA) price fell by 88% from 2009 to 2019 at ???



CONTACT US AT (800) 425 1175. What Is the Cost of Commercial Solar Systems? Installing commercial solar panels can range from \$100,000 (for a small company) to \$1,000,000. for large buildings. The more solar panels a ???

COMMERCIAL SOLAR PHOTOVOLTAIC SYSTEMS



For the 2021 ATB, commercial PV systems are modeled for a 200-kW DC, fixed-tilt, roof-mounted system. Flat-plate PV can utilize direct and indirect insolation, so PV modules need not directly face and track incident radiation. This gives PV systems a broad geographical application, especially for commercial PV systems.

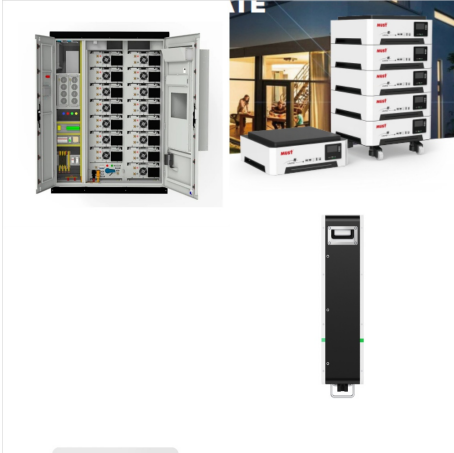


Solar PV systems generate power by converting the energy in sunlight to electricity. This conversion takes place within modules of specially fabricated materials that make up the solar panels. In most cases, solar PV panels are connected to the mains power supply through a device called an inverter. With a wide range of products and suppliers

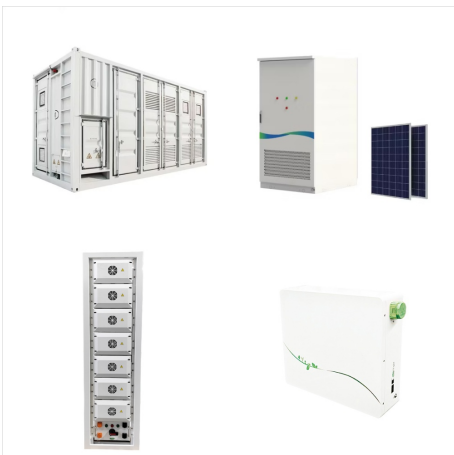


Geo Green Power are specialists in large scale commercial solar panel systems for a wide range of commercial sectors, including solar panels for large and small businesses, offices, factories, warehouses, farms, and agriculture. Whether you are looking to cut costs, reduce your carbon footprint or secure your future energy supply, we offer expert commercial solar installations ???

COMMERCIAL SOLAR PHOTOVOLTAIC SYSTEMS



On average, commercial solar panels can cost \$16,000 - \$60,000 (20kW to 50kW systems) for small to medium-sized businesses. Reduced costs, energy efficiency, and energy independence are among the main benefits of solar panels for businesses.



GOLDBECK SOLAR: Gateway of solar energy
Large-scale photovoltaic systems ??? for commercial and industrial use. Rely on 20 years of experience in the generation and supply of clean energy ??? nationally and internationally. We are your gateway to solar energy.



Commercial solar panels usually have 72 solar cells and measure around 6 feet by 3.25 feet, typically about the size of a sheet of plywood. **Solar Panel Efficiency Defined** A solar panel's efficiency is the amount of sunlight (solar irradiance) that falls on the solar panel that can be converted into usable electricity.

COMMERCIAL SOLAR PHOTOVOLTAIC SYSTEMS



Take advantage of a complete software ecosystem when designing, installing and monitoring SolarEdge PV systems. Discover SolarEdge's reliable and efficient commercial solar solutions, including inverters, optimizers, and other products. ???