

What is a compact DC power system?

Compact System DC Power Eltek's Compact DC Power System is an industry-leading system optimized for the demanding power needs of wireless communications and broadband access equipment. Requiring only 2RU (87.6mm) of rack height, the Compact DC Plant is the optimal flexible solution for a wide range of applications.

What is a compact DC plant?

Requiring only 2RU (87.6mm) of rack height, the Compact DC Plant is the optimal flexible solution for a wide range of applications. Plenty of power and embedded distribution makes the Compact system an ideal solution for powering customer premises based optical routers, multiplexers, and switches.

What is Eltek modular he DC power system?

The Eltek Modular HE DC Power System is a high-efficiency power solution with an optimal 23" rack-mount footprint. It is designed for applications between 600A... Read more ... The Eltek EcoTower DC Power System delivers up to 2400A and can be equipped with as many as four different DC distribution panels in a... Read more ...



For those interested in Eltek DC power, the following is a press release from Eltek concerning their line of high efficiency rectifiers and the Compact DC Power System available from Diversitec. Compact DC Power System Popular product for wireless, enterprise and broadband applications now features a complete line of rectifiers boasting an industry ???



The compact -48V DC power system fits into tight telecom spaces, such as radio base stations, DAS, and co-locations. The modular NetSure 7100 DC power system, with 3500 watt rectifiers, provides up to 500 amps of current for -48 volt systems in 8U of rack space, 19-in wide in indoor and outdoor applications. Basic components of the subrack



Middle Atlantic PD-DC-45 | 45 Watt Compact DC Power Distribution System . Brand: Middle Atlantic. Search this page . \$387.00 \$ 387. 00. 30-day refund/replacement . This item can be returned in its original condition for a full refund or replacement within 30 days of receipt. You may receive a partial or no refund on used, damaged or materially



This series of flexible DC power systems is designed for wireless access and fixed network applications offering unmatched temperature performance and high power density. The NetSure 5100 Series, a compact -48 volt 600 A DC power solution, features an advanced control unit, up to (29) positions for 2000 W high-efficiency eSure rectifiers or



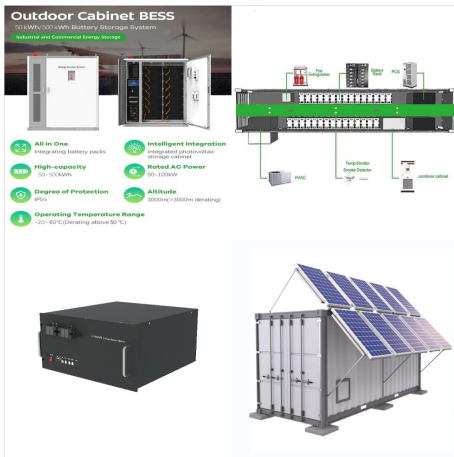
DC POWER SYSTEM DC OUT MAX OUTPUT 48V
24kW FlexiCompact DC Power System Product
Sheet, Version 3.0 Flexible by Name and by Nature
We offer a range of reliable, compact, efficient and
flexible DC power solutions from small standalone
systems for applications like access nodes to
medium-sized systems for radio base stations.



Eltek's Compact DC Power System is an
industry-leading system optimized for the
demanding power needs of wireless
communications and broadband access equipment.
Requiring only 2RU (87.6mm) of rack height, the
Compact DC Plant is the optimal flexible solution for
???



Compact DC Power System Doc. No. 2052286,
Issue 4 Published 13-Oct-11 How to Order To order
a complete working system, select part numbers
and quantity for the following items: Step 1.
Compact shelf Step 2. V-Series rectifiers Step 3.
Controller Step 4. Line cord(s) Step 5. Accessories:
o Alarm cable (if desired) o Temperature probes (if
desired)



Diversitec is a designated Eltek power electronics premier DC power integrator for the United States; only one of five companies to receive this designation. In 2003, Diversitec became one of only a handful of US authorized distributors for Valere Power. In 2007, Valere Power merged with Eltek to create Eltek Valere Power. Subsequently, Eltek dropped [??]



Compact and flexible Eltek Valere's Compact DC Power System is an industry-leading system optimized for the demanding power needs of wireless communications and broadband access equipment. Requiring only 2RU (87.6mm) of rack height, the Compact DC Plant is the optimal flexible solution for a wide range of applications. Applications Business



Micro compact design means more rack space; World leading power density; Modular telecom grade rectifiers; our standalone 1U MicroCompact DC power systems have been designed to be easily installed in any standard 19" rack or ETSI 515mm/300mm deep rack and can be configured to meet the individual requirements of each customer.

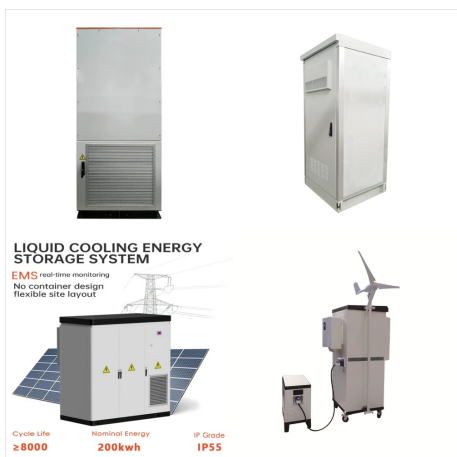


Installation Manual Compact C-Shelf System ~Doc. No. 2067838, Issue 10, September 2012 1.

Overview The Compact C-shelf is a DC power system has a mid-mount design for a standard 23" telecommunications racks. It can accommodate up to four Eltek V-series rectifiers and output either 24Vdc or 48Vdc (depending on which rectifiers are deployed).



The Vertiv Network Power line of DC power systems, formerly Emerson Network Power, demonstrates unparalleled reliability and industry-leading efficiency ratings at -48 and +24 VDC. Vertiv rectifiers ??? the heart of the power system ??? possess some of the highest power densities and smallest footprints in the business.



Installation Manual Compact "K" and "P" Shelves ~ Doc. No. 2070149, Issue 10.1, December 2011 7 1. Overview The Compact K-shelf and P-shelf systems are 48V DC power systems designed for standard 19" telecommunications racks and accommodate up to three Eltek V-series rectifiers. Brackets for 23" racks are available to order.



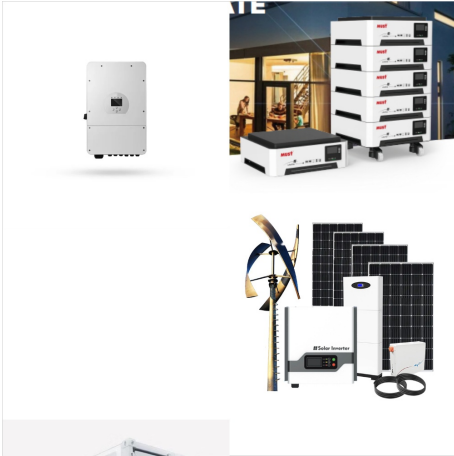
HV Compact | DC Power System | HVC22. HV Compact | DC Power System | HVC22. Key Features & Benefits. World leading power density; Fully featured industrial grade rectifiers; Hot-swappable rectifiers for no break operation under load; Easily customized and configured to suit each customer's individual needs;



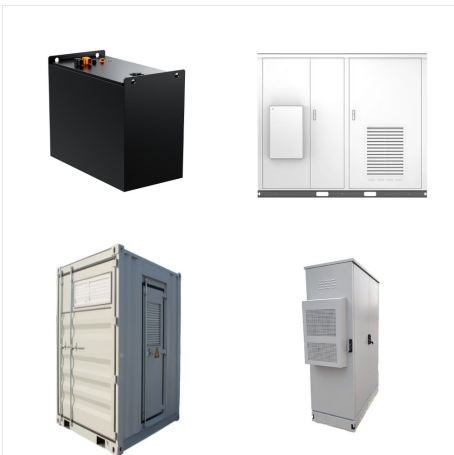
The GE Infinity S DC energy system is a compact power plant that supports dual voltage (+24V/-48V) operation through the use of a comprehensive range of advanced rectifiers and DC-DC converters. Primary voltage is supported by rectifiers and battery reserve, while secondary voltage is supported by DC-DC converter modules. Primary voltage can be



The Eltek Trilogy DC power system is powered by the Flatpack2 line of power modules, with a maximum depth of 15 inches it is ideal where space is limited. ABB Line Power Systems; ABB CPL ??? Compact Power Line; ABB Slimline Power System ??? SPS 48V; OmniOn Power Express Shelf/Power Express Combiner; Cabinet Solutions for Outdoor Applications;



The Compact DC Power System was originally introduced in 2004 yet has remained a customer favorite up to current times, where it is used in wireless base station, enterprise data center and broadband access network applications.



DOI: 10.1109/ESTS.2009.4906561 Corpus ID: 20379500; Compact DC power and propulsion systems - the definitive solution?

@article{Butcher2009CompactDP, title={Compact DC power and propulsion systems - the definitive solution?}, author={Martin Butcher and Re Maltby and Peykani Parvin}, journal={2009 IEEE Electric Ship Technologies Symposium}, year={2009}, ???



The OmniOn Infinity S DC Power system is a compact power plant that supports dual voltage (+24V/- 48V) operation up to 800A 800-876-9373. Skip to content. 1.800.876.9373 OmniOn Power was formerly ABB/GE Critical Power OmniOn Infinity S DC Power System Features and Benefits. ECO Priority Source ready; Dual Voltage power system with ultimate



Smart Variable-switching Regulated DC Power Supply PAV Series Communication Interface New regular testing power supply with high performance switching system Features Specifications Line-up Options Downloads Features Palm-sized with maximum power output at 800 W. The PAV series is a compact, high power density, high performance constant voltage (CV) / constant ???



The Vertiv??? NetSure??? 7100 Compact DC Power System is an integrated power system containing -48 VDC output rectifiers, intelligent control, metering, monitoring, and distribution. This system is designed to power a load while charging a positive grounded battery. This system is capable of operating in a



Shop Middle Atlantic PD-DC-45 45 Watt Compact DC Power Distribution System. Search all Middle Atlantic Products in AC Power Conditioners. Middle Atlantic PD-DC-45 45 Watt Compact DC Power Distribution System. ITEM #: MAP-PD-DC-45 MFG #: PD-DC-45 . Close Video. Watch the Video! Middle Atlantic Products. List Price: \$430.00. Our Price:



Unity Power System DC Power Supply System Doc 370140.DS3 ??? rev1.3 KEY FEATURES ???
COMPACT DESIGN Small overall dimensions are ideal for the art, efficient and compact DC power systems. Unity Power Systems deliver an industry leading power density, efficiency and superb reliability at lowest lifetime cost.



When the systems get strained, if we have to change our schedule at the last minute???they always make it happen. They're my go-to for all questions. All the technicians are very knowledgeable???it makes them stand out from competitors. Who is Exponential Power? We are a leading provider in stored power solutions



The Compact G-shelf is a DC power system has a mid-mount design for a standard 19" telecommunications racks. It can accommodate up to four Eltek Valere V-series rectifiers. Brackets for 23" racks are available to order. Figure 1 - Compact G Shelf Rectifier Specifications Rectifiers that work in the compact power system are listed in Table 1.



The demand for mobile and portable applications is driving the development of compact and miniaturized pulsed power devices. To detach the pulsed power system from the ground power supply, a compact and lightweight modular high-voltage DC charging power supply technology solution is proposed in this paper.



Compact HE 1U power systems Increasing network speed demands flexible and expandable DC power solutions. Due to its small size, high efficiency, reliability and wide range of communication, the Flatpack S System is the key for future needs. The shallow depth makes the system suitable for most cabinets and thereby excellent as a replacement unit.



The Compact DC Power System: Empower your network with efficiency, flexibility, and advanced technology. With a flexible shelf configuration supporting 3, 4, or 5 rectifiers, tailor the system ???