

How do I know if a power switch is reset or PWR?

Usually, the header for the power switch is tagged as "PWR_SW," while that of the reset switch is marked "RESET_SW." Additionally, check if connectors are rightly oriented since the majority will only fit when inserted in one direction.

How do you reset a power SW cable?

This header is usually marked as "RESET" or "Reset SW". It consists of two pins, just like a Power SW connection. Take the Reset SW cable, which belongs to the case's front panel connectors. Be careful about the orientation of the connector about a triangle or one marking indicating a positive side may appear on it, too.

Why is resetting a power switch important?

The process of joining the power switch and resetting switch connectors to motherboards is critical in computer system building or upgrading as it enables the CPU to be given power. These small but crucial wires act as an interface between the case and motherboard, helping to start up systems and allow resets.

How do I update the BIOS if the power connector is connected?

Back Panel Connectors Q-Flash Plus Button(Note) This button allows you to update the BIOS when the power connector is connected but the system is not powered on. **Clear CMOS Button** Use this button to clear the CMOS values (e.g. BIOS configuration) and reset the CMOS values to factory defaults when needed.

CONNECT THE POWER SWITCH RESET SWITCH AND SYSTEM STATUS INDICATOR



) F_PANEL (Front Panel Header) Connect the power switch, reset switch, speaker, chassis intrusion switch/sensor and system status indicator on the chassis to this header according to the pin assignments below. Note the positive and negative pins before connecting the cables. Power LED Power Switch Speaker



Connect the power switch, reset switch, speaker, chassis intrusion switch/sensor and system status indicator on the chassis to this header according to the pin assignments below. Note the positive and negative pins before connecting the cables. ???



) F_PANEL (Front Panel Header) Connect the power switch, reset switch, speaker, chassis intrusion switch/sensor and system status indicator on the chassis to this header according to the pin assignments below. Note the positive ???

CONNECT THE POWER SWITCH RESET SWITCH AND SYSTEM STATUS INDICATOR



Locate the reset switch connector: Similarly, locate the reset switch connector on your motherboard. It is labeled as "RST SW" or similar in the motherboard manual and is typically positioned near the power button connector. Connect the reset switch: Take the two-pin reset switch connector and align it with the appropriate pins on the



14) F_PANEL (Front Panel Header) Connect the power switch, reset switch, speaker, chassis intrusion switch/sensor and system status indicator on the chassis to this header according to the pin assignments below. Note the positive and negative pins before connecting the cables.



) F_PANEL (Front Panel Header) Connect the power switch, reset switch, speaker, chassis intrusion switch/sensor and system status indicator on the chassis to this header according to the pin assignments below. Note the positive ???

CONNECT THE POWER SWITCH RESET SWITCH AND SYSTEM STATUS INDICATOR



) F_PANEL (Front Panel Header) Connect the power switch, reset switch, speaker, chassis intrusion switch/sensor and system status indicator on the chassis to this header according to the pin assignments below. Note the positive and negative pins before connecting the cables. Power LED Power Switch Speaker Hard Drive



Pin No. Definition S F_ 5VDUAL No Pin SPDIFO 15) F_PANEL (Front Panel Header) Connect the power switch, reset switch, speaker, chassis intrusion switch/sensor and system status indicator on the chassis to this header according to the pin assignments below.



The power connector possesses a foolproof design. Connect the power supply cable to the power connector in the correct orientation. F_PANEL (Front Panel Header) Connect the power switch, reset switch, and system status indicator on the chassis to this header according to the pin assignments below. Note the positive and negative pins before

CONNECT THE POWER SWITCH RESET SWITCH AND SYSTEM STATUS INDICATOR



6) F_PANEL (Front Panel Header) Connect the power switch, reset switch, speaker, and system status indicator on the chassis to this header according to the pin assignments below. Note the positive and negative pins before connecting the cables.



A: Initially, find your motherboard's front panel header to connect the Power SW and Reset SW cables. Check your motherboard's guide to determine which pins are for the power switch (PWR) and reset switch (RESET). Gently fix the cords into the assigned pins as specified, keeping the correct polarity for positive and negative connections.



English 13) F_PANEL (Front Panel Header) Connect the power switch, reset switch, speaker and system status indicator on the chassis front panel to this header according to the pin assignments below. Message/Power/Power Sleep LED Switch Speaker Connector MSG+ MSG- PW+ PWSPEAK+

CONNECT THE POWER SWITCH RESET SWITCH AND SYSTEM STATUS INDICATOR



Page 16 8) F_PANEL (Front Panel Header)

Connect the power switch, reset switch, speaker, chassis intrusion switch/sensor and system status indicator on the chassis to this header according to the pin assignments below. Note the positive ???



Reset Parental Controls; Internet Connection.

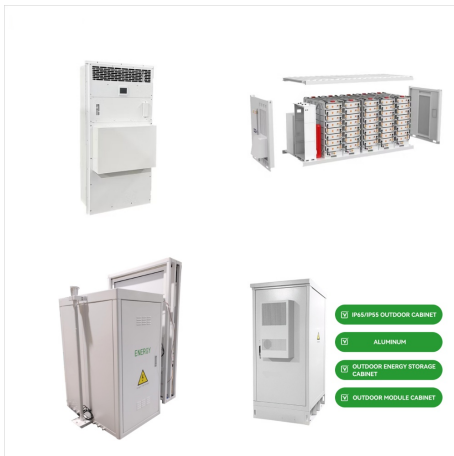
Connect to the Internet; Play Online; Nintendo Switch System Has No Power, The Battery Charge Indicator or Percentage Displays Incorrectly The information in this article can help when you are able to continue using the system for a few hours even though the battery charge indicator is



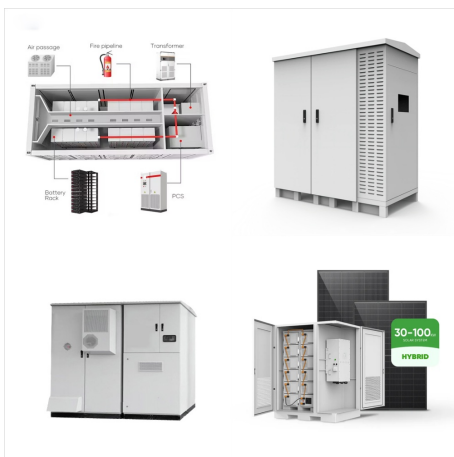
Page 18: Power 11) F_PANEL (Front Panel

Header) Connect the power switch, reset switch, and system status indicator on the chassis to this header according to the pin assignments below. Note the positive and negative pins before connecting the cables. RES+ Power Switch Reset Switch RES- PLED-

CONNECT THE POWER SWITCH RESET SWITCH AND SYSTEM STATUS INDICATOR



8) F_PANEL (Front Panel Header) Connect the power switch, reset switch, speaker, chassis intrusion switch/sensor and system status indicator on the chassis to this header according to the pin assignments below. Note the positive and negative pins before connecting the cables.



The power connector possesses a foolproof design. Connect the power supply cable to the power connector in the correct orientation. (Front Panel Header) Connect the power switch, reset switch, speaker, chassis intrusion switch/sensor and system status indicator on the chassis to this header according to the pin assignments below. Note the

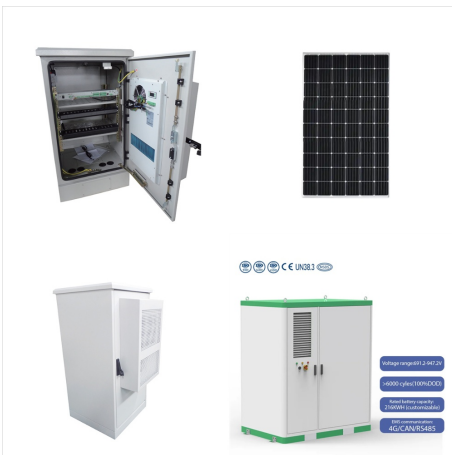


6) F_PANEL (Front Panel Header) Connect the power switch, reset switch, speaker, chassis intrusion switch/sensor and system status indicator on the chassis to this header according to the pin assignments below. Note the positive and negative pins before connecting the cables.

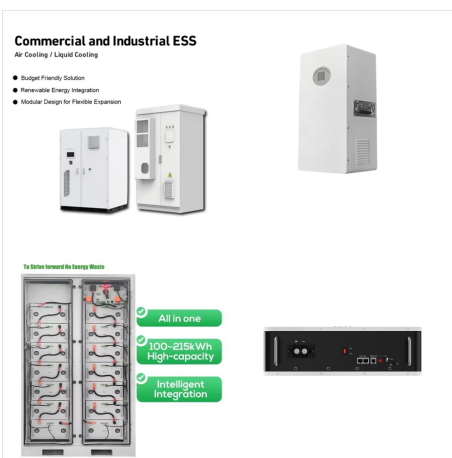
CONNECT THE POWER SWITCH RESET SWITCH AND SYSTEM STATUS INDICATOR



6) F_PANEL (Front Panel Header) Connect the power switch, reset switch, speaker, chassis intrusion switch/sensor and system status indicator on the chassis to this header according to the pin assignments below. Note the positive and negative pins before connecting the cables.

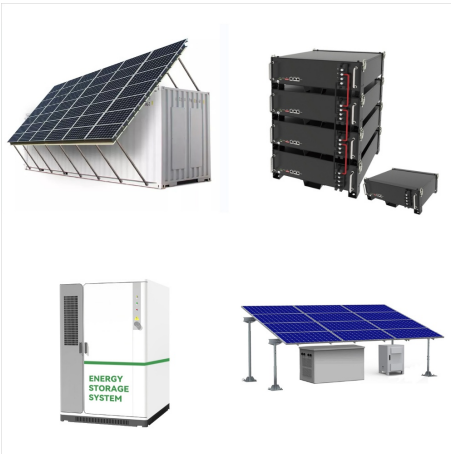


Page 16 8) F_PANEL (Front Panel Header)
Connect the power switch, reset switch, speaker, chassis intrusion switch/sensor and system status indicator on the chassis to this header according to the pin assignments below. Note the positive ???



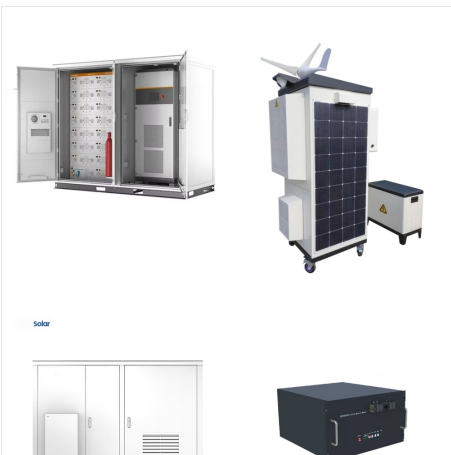
Connect the power switch, reset switch, and system status indicator on the chassis to this header according to the pin assignments below. Note the positive and negative pins before connecting the cables. PLED/PWR_LED (Power LED): Connects to the power status indicator on the chassis front panel. The LED is on when the system is operating.

CONNECT THE POWER SWITCH RESET SWITCH AND SYSTEM STATUS INDICATOR

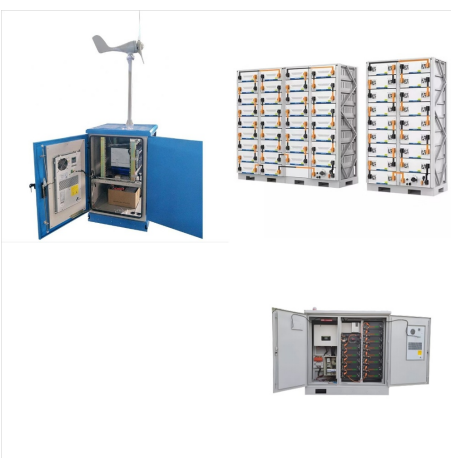


Connect the power switch, reset switch, speaker, chassis intrusion switch/sensor and system status indicator on the chassis to this header according to the pin assignments below. Note the positive and negative pins before connecting the cables.

PLED/PWR_LED (Power LED):



Connect the power switch, reset switch, and system status indicator on the chassis to this header according to the pin assignments below. Note the positive and negative pins before connecting the cables. PLED (Power LED): Connects to the power status indicator on the chassis front panel. The LED is on when the system is operating.



) F_PANEL (Front Panel Header) Connect the power switch, reset switch, speaker, chassis intrusion switch/sensor and system status indicator on the chassis to this header according to the pin assignments below. Note the positive ???

CONNECT THE POWER SWITCH RESET SWITCH AND SYSTEM STATUS INDICATOR



Connect the power switch, reset switch, speaker, chassis intrusion switch/sensor and system status indicator on the chassis to this header according to the pin assignments below. Note the positive and negative pins before connecting the cables.

PLED/PWR_LED (Power LED):



RESET (Reset Switch): Connect to the reset switch on the chassis front panel. Press the reset switch to restart the computer if the computer freezes and fails to perform a normal restart. PLED (System Power LED): Connect to the power status indicator on the chassis front panel. The LED is on when the system is operating.



switch on up to 4 outputs. The power module has 3 led indicators to display the status of each input. The switch panel has an idle mode and a sleep mode. The idle mode will start after 1 minute of inactivity with a current draw of 5.5mA. The sleep mode will start after 8 hours (default) of inactivity which is adjustable in the App with a current

CONNECT THE POWER SWITCH RESET SWITCH AND SYSTEM STATUS INDICATOR



(9-pin PANEL1) several system front panel (see p.2 No. 23) functions. Connect the power switch, reset switch and system status indicator on the chassis to this header according to the pin assignments below. Note the positive and negative pins before connecting the cables. PWRBTN (Power Switch): Connect to the power switch on the chassis front