

How to wire solar panels together?

When it comes to wiring solar panels together, there are two main options: series and parallel. In this article, we will focus on wiring solar panels in parallel and provide a diagram to illustrate the setup. Wiring solar panels in parallel means connecting the positive terminals of each panel together and the negative terminals together.

How do I connect two portable solar panels in parallel?

Connecting two portable solar panels, or any other type of solar panel, (same wattage) in parallel will multiply the total power output current by 2 and keep the system voltage at the same level. Parallel solar panel connections should be made using 'Y' connectors available at REDARC.

How do solar panels connect in parallel?

This connection wires solar panels in series by connecting positive to negative terminals to increase voltage and connects these strings in parallel. All solar panel strings connected in parallel have to feature the same voltage, and they also have to comply with the NEC 690.7, NEC 690.8 (A) (1), and NEC 690.8 (A) (2).

How do you connect solar panels in series?

Connecting in series is one of the easiest ways to connect your solar power systems. Connecting two fixed solar panels in this way (same wattage) will multiply the system voltage by 2 and keep the output current at the same level. Parallel Connecting solar panels in parallel is a slightly different process.

How do I connect multiple 4WD solar panels?

When it comes to solar panel connection, there are a few ways you can connect multiple 4WD solar panels. You can use a parallel or series connection, or a combination of the two. The diagram below illustrates how to wire solar panels in series or parallel. Series Wiring multiple solar panels in series means you are wiring each panel to the next.

Do solar panels need parallel wiring?

In the case of solar panels, parallel wiring involves connecting the positive terminals of each panel together and the negative terminals together. One key advantage of parallel wiring is that it increases the overall

CONNECT TWO SOLAR PANELS IN PARALLEL



current capacity of the system.



Solar Module Cell: The solar cell is a two-terminal device. One is positive (anode) and the other is negative (cathode). A solar cell arrangement is known as solar module or solar panel where solar panel arrangement is known as photovoltaic array. It is important to note that with the increase in series and parallel connection of modules the power of the modules also gets added.



Think of parallel connections as a team sport: each player may not run faster, but together, they bring more energy to the game. Advantages of Parallel Solar Panel Connections. Wiring solar panels in parallel boosts energy ???



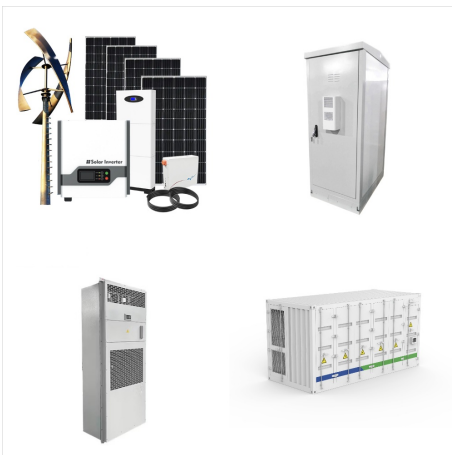
Series and parallel connection of two solar panels
Step 3: Connect the two Solar Panels to the Charge Controller and Battery. The wire from the solar panel will be too short to run to your charge controller. Use this wire to extend it so it can reach your charge controller. Most of the time, you are going to use the series connection.

CONNECT TWO SOLAR PANELS IN PARALLEL



If mixed wattage solar panels are connected in series, the total voltages are added. But the amps are reduced to the current of the lowest panel.

Wiring Solar Panels in Parallel. How to Connect Panels in Parallel. To connect solar panels in parallel, connect all of the positive wires together. Do the same with the negative wires.



Step 5: Connect Solar Panels in Series or Parallel. During Step 1, you should have already decided whether you'll benefit most from connecting your PV panels in series or parallel. Series Connection. For series connection, connect the positive pole of one module to the negative second, third and fourth modules correspondingly. A series



When connecting multiple solar panels in a 12-48 volt off-grid system, you have a few options: parallel, series, or a combination of the two this article, we'll give you the basics on wiring solar panels in parallel and in ???

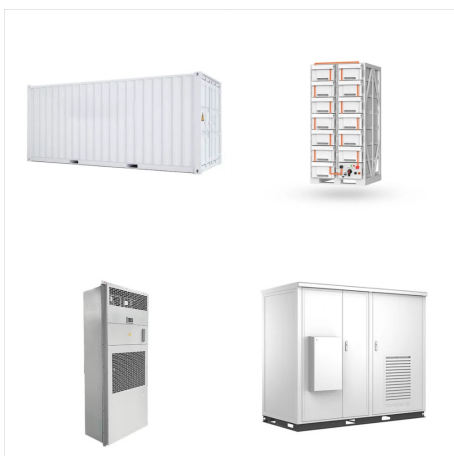
CONNECT TWO SOLAR PANELS IN PARALLEL



Step 5: Connect Solar Panels in Series or Parallel. During Step 1, you should have already decided whether you'll benefit most from connecting your PV panels in series or parallel. Series Connection. For series connection, ???



So when connecting Solar Panels in series always try to keep the electrical properties of the solar panels identical to get the full benefit of the solar array. Now lets look at connecting Solar Panels in Parallel. Solar Panels are connected in parallel to obtain higher output current. More AMPS. This is usually used with 12v set ups.



With this method, each solar panel must connect to two branch MC4 connectors ??? one for the positive cable and one for the negative. These branch connectors, in turn, require another pair of MC4 connectors to join the ???

CONNECT TWO SOLAR PANELS IN PARALLEL



The following wiring diagram shows that the two 12V, 10A, 120W solar panels connected in parallel will charge the two 12V, 100Ah parallel connected batteries as well as power up the AC load through batteries and inverter during the day in normal sunshine. During shading/night (when there is no generating power from solar panels) the battery



This article provides a comprehensive guide on wiring solar panels in parallel, including a detailed diagram to help you visualize the setup. Wiring solar panels in parallel involves connecting multiple panels together in a way that maintains ???



Parallel Connected Solar Panels of Different Wattages. Here let us assume we have four solar pv panels, two are rated at 80 watts, 12 volts, and two are rated at 100 watts, 12 volts giving a theoretical total of 360 (80+80+100+100) watts at 12 volts. The question here is how to connect the solar panels in parallel.

CONNECT TWO SOLAR PANELS IN PARALLEL



Connecting Solar Panels in Parallel. Connecting solar panels in parallel is a bit tricky and needs more than one wire. You link the positive parts of both panels. You also connect the negative parts together. All the negative and positive parts ???



Think of parallel connections as a team sport: each player may not run faster, but together, they bring more energy to the game. Advantages of Parallel Solar Panel Connections. Wiring solar panels in parallel boosts energy resilience??? imagine a team where if one player trips, the others pick up the slack. Each panel operates independently



If one connects two technically identical solar panels in parallel (to increase current), many sources suggest to put each of the panels in series with a Schottky diode before joining these branches. How does connecting different solar panels in parallel affect total current? 1. solar panels in parallel. 0. Selecting proper bypass diodes for

CONNECT TWO SOLAR PANELS IN PARALLEL



Wiring solar panels in parallel is achieved by connecting the negative terminal for two or more modules, while doing the same thing with the positive terminals. The process is the following:
Take the male MC4 plug ???



When installing solar panels in series, the voltage adds up, but the current stays the same for all of the elements. For example, if you installed 5 solar panels in series ??? with each solar panel rated at 12 volts and 5 amps ??? you'd still have 5 amps but a full 60 volts. There are some major benefits to connecting solar panels in series.



Parallel. To wire solar panels in parallel, you need to buy the appropriate branch connectors for the number of panels you're wiring in parallel. (You may also need to buy inline MC4 fuses and connect them to the positive cable of each solar panel.) I'll show you how to wire 2 panels in parallel using Y branch connectors.

CONNECT TWO SOLAR PANELS IN PARALLEL



Solar Panel Wiring 101 ??? Wiring Panels in Series vs. Parallel . Pretty much every single solar panel you pick up is going to come with two wires hanging off the back of it: one positive and one negative.



Consulting with a solar energy professional can help design the best series-parallel configuration for your system. 2. Should 12V Solar Panels Be Wired in Series or Parallel? 12V solar panels can be wired in either series or ???

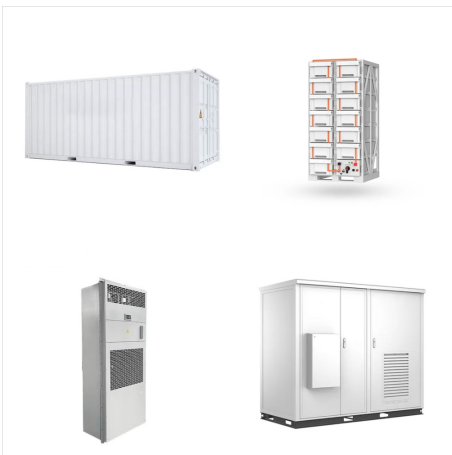


To wire solar panels in parallel, you'll require a couple of branch connectors. These connectors link all the positive terminals of the solar panels, creating the positive terminal of the solar array, and they connect all the negative terminals to form the negative terminal of ???

CONNECT TWO SOLAR PANELS IN PARALLEL



The article explains how to connect two 100-watt solar panels in series and parallel to increase the power output of an off-grid solar installation. It discusses the difference between series and parallel circuits, highlighting that series connections add up voltage while keeping amperage the same, whereas parallel connections increase amperage



Mixing Mismatched Solar Panels. Luckily there are only two variables that we have to take into account. These are current and voltage. As previously mentioned, when we connect solar panels in series, the voltage gets added up. When we wire multiple solar panels in parallel, the current gets added up.



So, if you connect two solar panels with a rated voltage of 40 volts and a rated amperage of 5 amps in series, the voltage of the series would be 80 volts, while the amperage would remain at 5 amps. Wiring solar panels in parallel ???

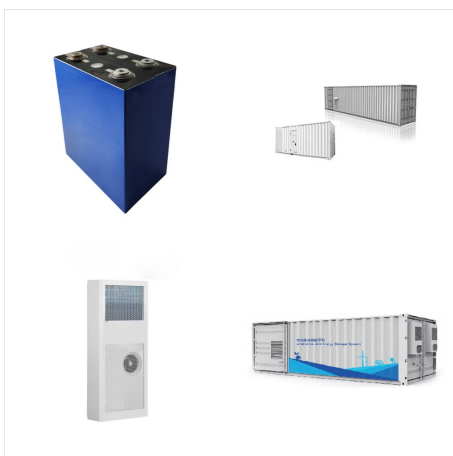
CONNECT TWO SOLAR PANELS IN PARALLEL



When connecting your solar panels in parallel, you will be adding together their current ratings. For example, if you connect two ENERDRIVE | DOMETIC 180W panels (9.1A, 19.8V) together in parallel, you would get an array that produces 18.2A at 19.8V. Adding a third panel to the array would make it 27.3A at 19.8V and so on.



Wiring in Parallel. The next method of wiring solar panels is in parallel. In this configuration, all the positive ends are connected together, and all the negative ends are connected, maintaining the voltage but adding up the ???



These videos show how to connect two 100 watt solar panels in parallel and series using MC4 branch connectors. For a parallel connection, connect positive leads with one adapter and negative leads with another adapter, and then connect to the adapter kit. For a series connection, connect the negative lead from one panel with the positive lead

CONNECT TWO SOLAR PANELS IN PARALLEL



Connecting two portable solar panels, or any other type of solar panel, (same wattage) in parallel will multiply the total power output current by 2 and keep the system voltage at the same level. ???



There are three ways to wire a solar panel array; series, parallel, and series-parallel. If the needs of your solar electrical system call for parallel wiring of your solar panels, this blog post will teach you how to wire your solar panel array in parallel.. Wiring solar panels in parallel simply means combining all of the positive wires together into one wire that will go to the charge