



How do you connect a solar panel to a car battery?

Connect the solar panel's positive and negative terminals to the input terminals of the charge controller. Additionally, connect the charge controller's output terminals to the car battery, making sure to maintain the correct polarity. Once connected, inspect the wiring for any loose connections or faults.

Can you connect a solar panel to a battery?

Don't connect a solar panel directly to a battery. Doing so can damage the battery. Instead, connect both battery and solar panel to a solar charge controller. It's recommended you fuse your system. Safety best practices, y'all! Place one fuse between the positive battery terminal and the charge controller.

How do you connect a solar charge controller to a car?

Connect the wires from the solar charge controller to the battery. Make sure you connect the wires with the correct polarity. Install a fuse between the solar charge controller and the battery. This will help protect your battery in case of a circuit overload. Connect the wires from the solar charge controller to your car's electrical system.

How do I connect a solar panel to a 12V battery?

Connect the solar panel wires to the solar panel (PV) terminals on your charge controller. Note: If your solar panel has MC4 connectors, you'll have to use MC4 adapter cables to be able to connect it to your charge controller. Now the solar panel is connected to the 12V battery via the solar charge controller. Here's what mine looked like:

Can a solar panel charge a car battery?

A 12V solar panel with an efficiency of at least 15% is recommended. This will ensure that the panel can generate enough electricity to charge the battery efficiently. Before you can connect a solar panel to your car battery, you need to have all the necessary components and materials. Here are the things you need to get started:

How do I choose a solar panel for my car battery?

When choosing a solar panel for your car battery, it is important to consider its efficiency. A 12V solar panel

# CONNECTING SOLAR PANEL TO CAR BATTERY



with an efficiency of at least 15% is recommended. This will ensure that the panel can generate enough electricity to charge the battery efficiently.



Charge Your 12V RV/Van & Car Battery With A Jackery SolarSaga 100W Solar Panel. The Jackery SolarSaga 100W/100X (click to view on Amazon) is a very popular portable solar panel. Connect the Jackery solar panel to the side that says "INPUT". If you plug the solar charge controller in while the solar panel is in sun, the screen will turn on.



How to Connect a Charge Controller to a Battery and Solar Panel. Instead of connecting a battery directly to a solar panel, you should install a charge controller between the battery and solar panel. The solar panel will charge battery with current but the controller ensures only a safe amount goes into it. The following steps show how it is done.



A typical home setup includes solar panels, an inverter, the utility grid connection, and a battery storage unit. The solar panels charge the battery storage unit during daylight hours when solar production exceeds the immediate power needs of the home. This stored energy remains in the batteries.

# CONNECTING SOLAR PANEL TO CAR BATTERY



Materials & Tools Materials. 12V car battery ??? or just a standard 12V lead acid battery; Renogy Wanderer 10A charge controller ??? or any cheap PWM charge controller; 12V solar panel ??? I used a 5W 12V solar panel for a slow trickle charge. I'd use a 20W 12V solar panel or greater for a faster charge.; Wires, connectors, and fuses ??? I used the NOCO GC018 ???



Unlock the power of solar energy with our comprehensive guide on connecting solar panels to batteries! This article simplifies the process, covering system types and essential components while emphasizing safety and preparation. Discover practical tips, battery comparisons, and troubleshooting solutions to optimize your solar setup. Whether you're ???



Lead-acid batteries are often used in car batteries, and they're known for being reliable and long-lasting. However, they can be heavy and bulky, which may not be ideal if you're trying to store solar power in a small space. How to Connect Solar Panels to a Battery and Light (Detailed Guide) Now that you know the basics, it's time to

# CONNECTING SOLAR PANEL TO CAR BATTERY



Solar panels capture sunlight for decades, even in extreme climates, and LFP battery storage can last you 10 years or more of daily use. With nationwide and state tax breaks like the 30% Federal Solar Tax Credit, you ???



A dual battery wiring diagram with solar is a schematic representation of how to connect and set up two batteries in a vehicle or an off-grid system, along with a solar panel for charging. This wiring diagram is particularly useful for ???



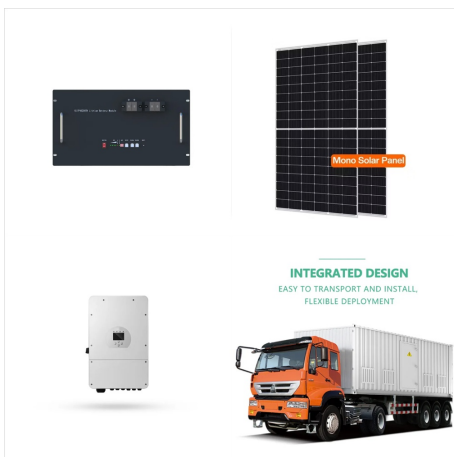
Yes, you may connect a solar panel directly to a battery. Solar panels are frequently connected in this manner, and it is a very efficient way to charge batteries. There are some things to consider when performing this: Check to see if the solar panel is rated for the correct voltage for your battery. If the solar panel's voltage is too high



# CONNECTING SOLAR PANEL TO CAR BATTERY



Connecting your solar panel to the car battery  
Mount the Solar Panel. Securely mount your solar panel in a position where it will receive maximum sunlight. Install the Charge Controller. Place the charge controller close to the battery to minimise voltage drop ??? this is crucial for regulating the electricity flow. Connect the Panel to the



The article provides a comprehensive guide on connecting a solar panel to a 12-volt battery, essential for beginners in solar power. It emphasizes the importance of positioning the solar panel to receive adequate sunlight and explains the necessity of a solar charge controller to prevent battery damage from overcharging or draining.



A Simple \$20-\$30 solar trickle charger might be a way to avoid these inevitable headaches. I will test out a 7-watt panel to see if this will actually work without the need for a charge

# CONNECTING SOLAR PANEL TO CAR BATTERY



Using solar panel for car battery charging is a great way to reduce emissions and save money on fuel costs. Solar panels are becoming increasingly popular due to their ability to generate clean, renewable energy from the sun's rays. you'll need to connect the solar panel directly into its own dedicated power source or charge controller



This depends on the range and capacity of your electric car battery, as well as your home's viability for solar panels. A typical homeowner drives about 12,000 miles a year. They will need about 3,500 kWh a year to power just their vehicle, the equivalent to a 2-5 kWh solar system. This amount of power could be generated by 5-12 solar panels



Unlock the potential of solar energy by learning how to connect solar panels to a battery bank. This comprehensive guide simplifies the process, detailing necessary tools, types of solar panels and batteries, and providing a step-by-step installation walkthrough. Discover essential safety precautions to ensure a smooth setup and maximize energy efficiency while ???

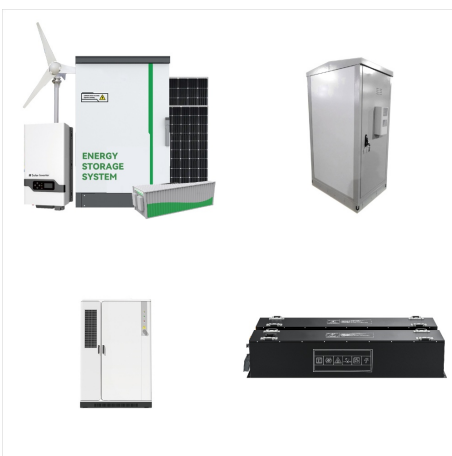
# CONNECTING SOLAR PANEL TO CAR BATTERY



For instance, charging a 12V battery with a 5W solar panel will take significantly more time compared to a 20W panel. Charging a 12V Battery with a 5W Solar Panel Materials and Tools Required. To charge a 12V battery with a ???



Understanding how to connect batteries to solar panels is an essential skill when harnessing this off-grid resource. See also: Wiring Solar Panels to 2 Batteries (Key Guide) Understanding Solar Panel and Battery Connection. It's important to note that installing a solar panel battery is not as straightforward as plugging into an outlet.



How To Connect A Goal Zero Solar Panel To A 12 Volt RV Deep Cycle Lead-Acid Battery. The problem with the Goal Zero solar panels is that they don't have MC4 connectors or alligator clips, they're either USB, 8mm, or APP (Anderson Power Pole).

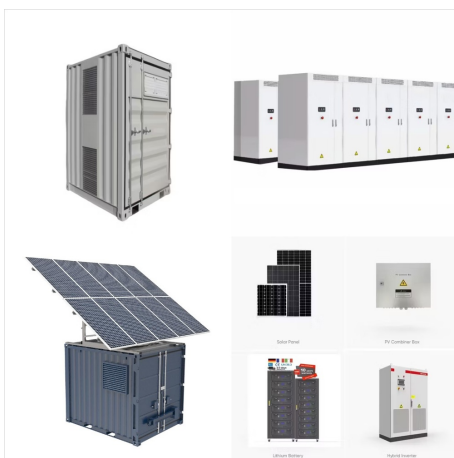
# CONNECTING SOLAR PANEL TO CAR BATTERY



Learn the basics to Solar Charging and what you need. We use cookies to improve your experience, Batteries & Electrical; Car Care & Cleaning; Caravan, Camping & Trailer; Oils, Fluids & Filters; Paint & Panel; Spare Parts; Solar Panels & Kits; Solar Blankets; Solar Maintenance Chargers; Solar Accessories; Dual Battery Kits; DC-DC Chargers;



Connecting solar panels to a battery is an efficient way to harness renewable energy and reduce your reliance on the grid. In this article, we'll guide you through the step-by-step process of how to connect solar panels to a battery. Jump-Starting A Car With A Bad Battery: Exploring The Feasibility November 5, 2024; Easy Steps To Reset



Connecting a solar panel to a car battery is a great way to keep the battery charged and ensure that your car always has enough power to start. The process involves connecting the solar panel to the battery via a charge controller, which regulates the amount of ???



# CONNECTING SOLAR PANEL TO CAR BATTERY



Connecting Solar Panel to Battery and Inverter. Connecting your solar panel system to a battery and inverter is crucial in harnessing solar energy efficiently. This section will break down the process into detailed steps to ensure a successful connection. Step 1: Mounting the Solar Panels. Proper installation is essential before connecting the



Discover how to safely connect solar panels directly to batteries in your home solar energy system. This article breaks down the essential components, voltage compatibility, and wiring techniques needed for a successful setup. Explore the benefits of direct connections, such as cost-effectiveness and efficiency, while also understanding the risks involved. Learn about ???



For instance, charging a 12V battery with a 5W solar panel will take significantly more time compared to a 20W panel. Charging a 12V Battery with a 5W Solar Panel Materials and Tools Required. To charge a 12V battery with a 5W solar panel, you will need: 5W Solar Panel; Solar Charge Controller (10A would be sufficient) 12V Car Battery

# CONNECTING SOLAR PANEL TO CAR BATTERY



Plug in the adapter with the cigarette lighter socket in the car: Connect the solar panel to the car's cigarette lighter socket by plugging in the adapter, then position the panel in direct sunlight for optimal charging efficiency. With the adapter attached, the solar panel activates and begins charging the vehicle's battery.

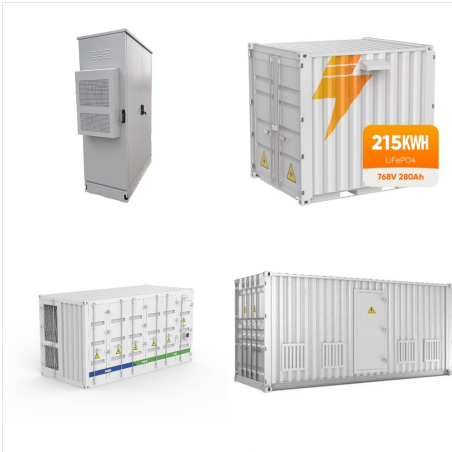


If your vehicle is equipped with an on-board / installed dual-battery system, you simply connect the panel to the regulator, and the regulator to the terminals of your auxiliary battery. On that note, it's best to have your regulator as close to the battery as possible in order to limit voltage loss between the two.



Without saying much, here is a guide on how to connect a solar panel to your car battery. But, before we dive into the step-by-step procedure, there are items you need, and they include. 4 Tools You Need Before Charging Your Car Battery With A Solar Panel 1. Solar Panel. The solar panel is an integral part of your solar system.

# CONNECTING SOLAR PANEL TO CAR BATTERY



Matching the solar panel to the battery. Just as important as the solar panel is the battery, and the charging system that you are going to use. Some people say 1 amp hour of battery for every 2 watts of solar, and I reckon this is overkill. I would go more down the path of 1.3 ??? 1.6 watts of solar per amp hour of battery.



? This ensures a good electrical connection.  
Connect Positive Wires: Attach the positive wire from the solar panel to the positive terminal of the solar charge controller. Then, connect ???



The basic system is to start with the installation of a rack or platform. If the panels are roof-mounted, a roof racking system is first installed. A ground platform is needed if the panels are ground-mounted, and installing the solar panels is not difficult. What is more difficult is wiring them.