

How do I connect a solar panel to a charge controller?

Check out the wiring diagram to see how to connect a solar panel to a charge controller: Here's the important thing to know: Connect the battery to the charge controller FIRST. Then you connect the solar panel SECOND. If you do it in the wrong order, you can damage the charge controller. And that just wouldn't be any fun. Ok!

How to connect a battery to a solar panel?

Here's the important thing to know: Connect the battery to the charge controller FIRST. Then you connect the solar panel SECOND. If you do it in the wrong order, you can damage the charge controller. And that just wouldn't be any fun. Ok! Let's connect this battery.

How do I connect a PV array to a solar charge controller?

Connecting the PV Array to the Solar Charge Controller These will be labeled as 'PV Array', 'Solar Panels', or 'Panel'. Again, pay close attention to the indicated polarities. Once more, match the polarity. The positive wire goes to the positive solar panel terminal, and the negative wire connects to the negative terminal.

Do solar panels need a charge controller?

A battery is a fragile thing and high voltage of solar panels can easily destroy it. A charge controller acts as a safety barrier between panels and a battery and should be a part of every home solar panel installation. In this article, we'll explain how to wire together solar panels, a regulator and a battery. But what does a battery fear?

How do I size the wires between solar panels & solar charge controller?

To size the wires between your solar panels and solar charge controller correctly, you'll need to make sure that the ampacity of each wire is at least 1.25 greater than the maximum current going through the wire, and that the total voltage drop between your solar panels and solar charge controller does not exceed 3%.

How do you connect a charge controller to a panel?

After you've connected the charge controller to the battery, it is now safe to connect it to the panels. Out of the junction box of a panel come two cables, a positive and a negative. In some situations, it's just two wires

CONNECTING SOLAR PANEL TO CHARGE CONTROLLER



that go straight to the controller.



Cross-Reference: Should We Connect Batteries First Instead Of Solar Panels To Charge Controllers? Can a Solar Panel Work Without a Controller? Yes, a solar panel can work without a controller in certain circumstances, However, this setup is not recommended due to the risks of overvoltage, reverse current flow, and overcharging the battery. A



Step 3: Connect the Solar Charge Controller. Next, connect the solar charge controller to the batteries. The charge controller regulates the flow of electricity from the solar panels to the batteries, preventing overcharging and ensuring optimal charging efficiency. Step 4: Connect the Inverter. Now it's time to connect the inverter.



Step 3: Connect charge controller to solar panels. A standard solar panel has a junction box with two cables coming out of it: one is positive with a "male" MC4 connector and the other one is negative with a "female" connector. To connect your panels to the charge controller, you may need two additional cables with an MC4 connector on one end

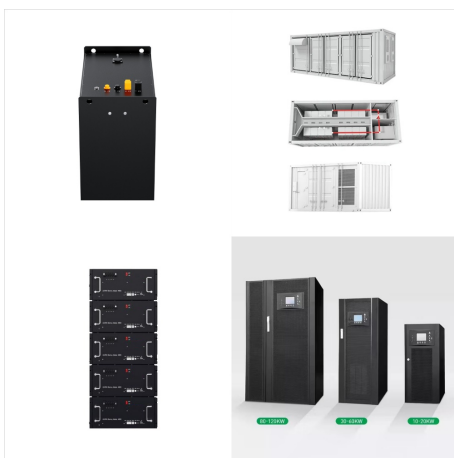
CONNECTING SOLAR PANEL TO CHARGE CONTROLLER



Introduction. To connect a solar charge controller with an inverter, you will need to first connect the solar panels to the charge controller, which regulates the power coming in. ???



Disclosure: As an Amazon Associate, this site earns from qualifying purchases. Though we may earn a commission, the price you pay always remains the same. Part 1: Wiring Charge Controller to Solar Panels. Virtually every solar charge controller will have two input ports that must be connected to the solar panels.



A solar panel charge controller; Battery charger; Wiring (to connect the solar panel to the charge controller and the charge controller to the battery) Once you have all of your materials, follow these steps: Connect the solar panel to the charge controller using the wiring. Connect the charge controller to the battery using the wiring.

CONNECTING SOLAR PANEL TO CHARGE CONTROLLER



If you already have the suitcase, you can bypass the controller by cutting the cable between the solar panel and charge controller and install MC4 connectors on both sides of the wires you cut.

Reply. Tom. October 18, 2020 at 9:04 am Start by connecting the solar charge controller to the Lithium battery with the battery clips, positive red



Connect solar panel strings in parallel by using a connector known as MC4 T-Branch Connector 1 to 2, My Zantrax 2000 inverter shows 14.0 volts. My Zenith 40 amp. controller shows E00, meaning no action needed. When I plug in a 1500 watt space heater, inverter beeps, and shows fault light. Does anybody know why? Reply.



Connect the battery to the charge controller, connect your solar panels to your charge controller and use a precharge resistor to connect your batteries to your inverter. If you do not use a pre-charge resistor, there will be a big spark. Reply. Ray Kuta. January 31, 2023 at ???

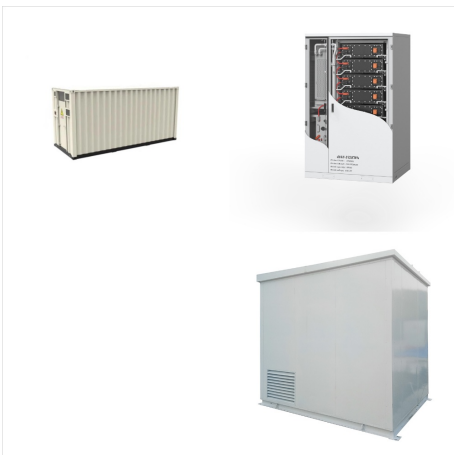
CONNECTING SOLAR PANEL TO CHARGE CONTROLLER



Why is It Essential to Connect the Solar Panels to a Charge Controller. It's critical to connect the solar panels to a charge controller because it regulates the power to the battery bank from the solar array. In the same way, it plays a vital role in ensuring that the deep cycle batteries aren't overcharged during the daytime.



What is a solar charge controller? Connect a solar panel directly to a battery, and you risk severely damaging both. This is where a solar charge controller comes in: to act as a bridge to control the amount of charge that ???



How to connect solar panels to charge controller in 3 steps. 26 Sep 2023. 6 min. Beginner. Andrei Gorichenskii Author. If your solar system has a battery, add a charge controller! It will prolong the lifespan of your energy ???

CONNECTING SOLAR PANEL TO CHARGE CONTROLLER



A charge controller acts as a safety barrier between panels and a battery and should be a part of every home solar panel installation. In this article, we'll explain how to wire together solar panels, a regulator and a battery.



These devices connect the solar panels to the battery to prevent it from overcharging and over-discharging. I've just bought a 140w solar panel with a pwm charge controller or correctly named voltage regulator. My previous panel was sabotaged, hence the new purchase. However the previous panel has a fully sealed unit so based on other



Step3: Connecting the Solar Panel to the Charge Controller. Solar panels coupled with charge controllers and batteries are popular for providing power to recreational vehicles, campers, and boats, allowing for extended stays off-grid without relying solely on generators or shore power. These systems also help fisherman, campers to contact

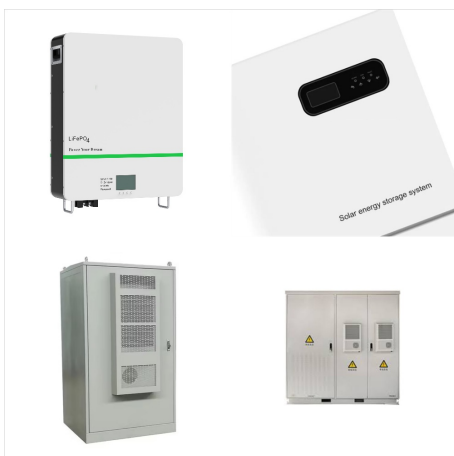
CONNECTING SOLAR PANEL TO CHARGE CONTROLLER



Connecting a solar panel to a battery, inverter, or charge controller is simpler than you may think! Building an off-grid solar system is easy with the proper materials and tools, and you can set up an entire renewable energy system by yourself in practically no time. Solar Charge Controller. Solar Panels of 30 watts and above all need a



Once you have connected your solar panels to the solar charge controller, the next step is to connect the inverter to either the battery or the grid. The process of connecting the inverter to the battery or grid depends on whether you have an off-grid or grid-tied system.



The question of how to connect a solar panel to a charge controller usually comes from customers who want to build a small DIY off-grid system on their own. Let's start by gathering the parts. Here's what you'll need ???

CONNECTING SOLAR PANEL TO CHARGE CONTROLLER



3. While this is somewhat counterintuitive, you **MUST** connect the solar charge controller to the battery bank. To watch a complete installation (from panels to charge controller to battery), check out this video: While there are many different solar panel configurations, types and sizes, the way to hook up solar panels to your RV is usually



To connect a solar panel to a charge controller, you need MC4 solar adapter cables. MC4 solar adapter cables are needed to connect a solar panel to a charge controller (These are basically a length of solar PV wire that has an MC4 connector at one end and is stripped at the other).



Connecting a solar panel to a 12 volt battery is the most basic task you need to learn if you're getting into solar. Here's how. Step Four ??? Connect the Charge Controller to Your Mounted Solar Panel. At this stage, you can now wire the solar charge controller to the solar panel. Again, the instruction manual will explain the exact wiring

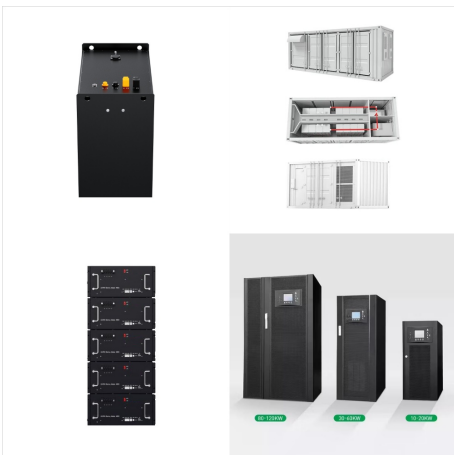
CONNECTING SOLAR PANEL TO CHARGE CONTROLLER



The optimum solar charge controller settings for a Lifepo4 battery will depend on the type of battery you have and the type of solar system you have installed. For example, if you are installing a 12V system, your solar charge controller settings will be different from those for an AA or AAA battery.



Therefore, when connect multiple panel in series, the voltage values of each panel are added up together, and the amperage values are not added up and stay the same and this will leads to low efficiency because the PWM charge controller will lower the voltage values of the whole solar panel system and the amperage value is still equals to only



In other words, the size of the wire must meet 2 conditions: Condition 1: The Ampacity of the wire must be at least 125% greater than the Maximum Current. Condition 2: The wire must be thick enough to limit the ???

CONNECTING SOLAR PANEL TO CHARGE CONTROLLER



I have a 300W YOSE power station and a Dokio 100W solar panel, can I connect a charger from the Solar panel to the power station to charge it? Reply. Jesse. April 1, 2022 at 12:06 pm No, you can't. You're going to have to bypass the charge controller before connecting the panel to your power station, or buy another panel if you can't

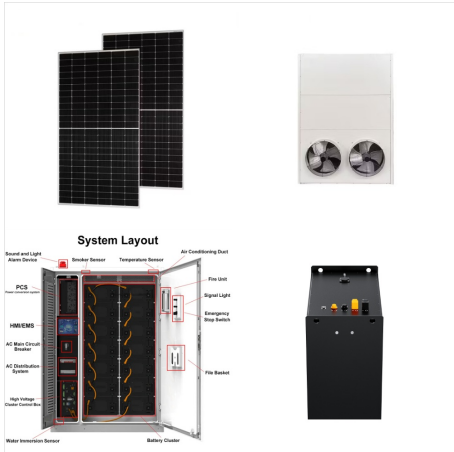


You can do this by adjusting the voltage setting of the charge controller. The voltage setting determines how fast your solar cells can recharge. You can change these settings Via PC software, or on your charge controller. It is recommended that you follow the manufacturer's recommendations to get the most from your solar energy system.



Once you have connected your solar panels to the solar charge controller, the next step is to connect the inverter to either the battery or the grid. The process of connecting the inverter to the battery or grid depends on whether you have an ???

CONNECTING SOLAR PANEL TO CHARGE CONTROLLER



Connecting Solar Panels to the Solar Charge Controller: The first step involves linking the solar panels to the solar charge controller using the cables that come with your solar installation kit. In this set-up, the positive terminal is connected to the positive terminal and likewise for the negative terminal.



Wiring PV Panel to Charge Controller, 12V Battery & 12VDC Load. In this simple solar panel wiring tutorial, we will show how to connect a solar panel to the solar charge controller, battery and direct DC load according to the rating. Keep in mind that AC load is not connected in this PV panel wiring tutorial which needs extra equipment such as UPS and inverter to convert ???