

Do solar panels come with MC4 connectors?

These solar systems come with all the cable and MC4 connectors you could ever ask for. MC4 Connectors are available in Male and Female Connections and are commonly used on the leads running from Solar Panels, to connect other solar panels in 'Parallel' or in 'Series'.

What are MC4 connectors?

MC4 Connectors are available in Male and Female Connections and are commonly used on the leads running from Solar Panels, to connect other solar panels in 'Parallel' or in 'Series'. There are two main ways in which you can connect multiple panels for higher power output. These wiring configurations are known as Parallel & Series.

How do I install a solar panel MC4 connector?

If you have a single solar panel, simply connect the solar panel MC4 connectors to your newly installed ones. If you have multiple panels in series, connect the positive of one panel to the negative of the other, and then install your cable length as if they were a single panel. Congratulations!

How do I connect solar panels in parallel?

To connect solar panels in parallel, you require an additional component known as an MC4 combiner (or MC4 multi-branch connector), this name differs for other types of solar panel connectors. The image above illustrates a 4-in-1 MC4 combiner, but these components can be 2 in 1, 3 in 1, and so on.

How do I connect MC4 fuses to a solar panel?

(FFM stands for "female, female, male," meaning the Y connector with 2 female MC4 connectors and 1 male MC4 connector.) Then connect the 2 negative solar panel cables to the other Y connector. This will likely be the MMF connector. Note: If using MC4 inline fuses, connect them between the each positive cable and the Y connector. Done!

How do I connect two 100 watt solar panels in parallel?

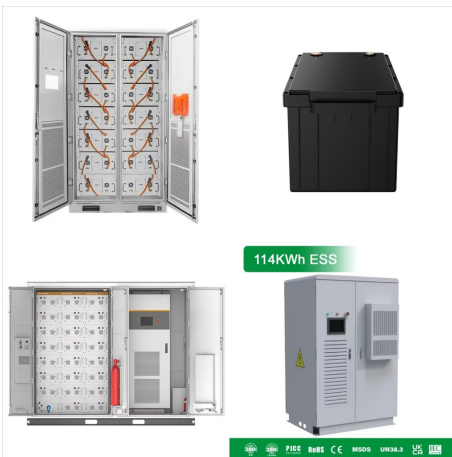
CONNECTING SOLAR PANELS IN PARALLEL WITH MC4 CONNECTORS



These videos show how to connect two 100 watt solar panels in parallel and series using MC4 branch connectors. For a parallel connection, connect positive leads with one adapter and negative leads with another adapter, and then connect to the adapter kit.



Connects solar panels in parallel to improve the charging rate efficiency. Required to connect 4 solar panels in parallel to recharge DELTA. Required to connect 2 solar panels in parallel to recharge RIVER Series. In the Box. Solar Parallel Cables x2
*Please NOTE: This item is only applicable to orders in the US (except Alaska and the Virgin



Solar Panel Connectors are connected the components of solar panel system to ensure a safe & efficient flow of electricity. There are many types: MC4, MC3, H4, etc. Wiring solar panels - Series, Parallel, or a combination of both For a solar panel MC4 connector, the female connector is usually considered the positive lead (with a red

CONNECTING SOLAR PANELS IN PARALLEL WITH MC4 CONNECTORS



Solar Panel Connectors: How to use solar panel connectors and MC4 connector extension cables. Wondering how solar panel connectors work? MC4 branch connectors and PV extension cables to connect solar panels together and to solar generators in series/parallel. Skip to content. Save Big, Specials Offers Live! Ends Nov 6th, 2024 | Order Today!



Solar Panel Parallel Connectors are important components in solar power systems. MC4 connectors, Y Connector Solar and Solar Panel Connectors allow multiple solar panels to be connected in parallel, increasing the overall power output. These Solar Panel Connectors are specifically designed to ensure efficient and reliable connections between solar panels, ???



T-branch connectors provide simple and effective parallel connections between several solar panels. They are a combination of MC4 and T-branch connectors. It's easy to connect two solar panels in parallel with these connectors, which come in pairs???one male-to-dual female and one female-to-dual male.

CONNECTING SOLAR PANELS IN PARALLEL WITH MC4 CONNECTORS



Opt for MC4 connectors in solar setups for secure, polarity-conscious DC connections that meet global safety norms. Connecting lines carrying direct current (DC) is more challenging and dangerous than connecting lines carrying alternating current (AC). To make matters worse, solar energy systems require custom line lengths and connections at awkward ???



MC4 connectors, short for "Multi-Contact, 4 millimeters," are single-contact electrical connectors commonly used for connecting solar panels. They are designed to allow strings of panels to be easily constructed by pushing the compatible connectors from adjacent panels together by hand.



MC4 Connectors are available in Male and Female Connections and are commonly used on the leads running from Solar Panels, to connect other solar panels in "Parallel" or in "Series". There are two main ways in which you can connect multiple panels for higher power output. These wiring configurations are known as Parallel & Series.

CONNECTING SOLAR PANELS IN PARALLEL WITH MC4 CONNECTORS



Connecting solar panels in parallel allows the system to generate more electricity without exceeding the voltage limits of the inverter. Parallel: MC4 Connectors. The use of MC4 connectors is crucial when wiring solar panels in a series or parallel arrangement. The solar panels can easily be attached to these connectors" positive and



Male or Female Connector: Solar connectors come in matched pairs ??? one male and one female. The male connector features a rod, while the female connector has a corresponding receptacle. What's the Best Way to Connect Solar Panels: Series or Parallel? The decision to wire your solar panels in either series or parallel depends on the

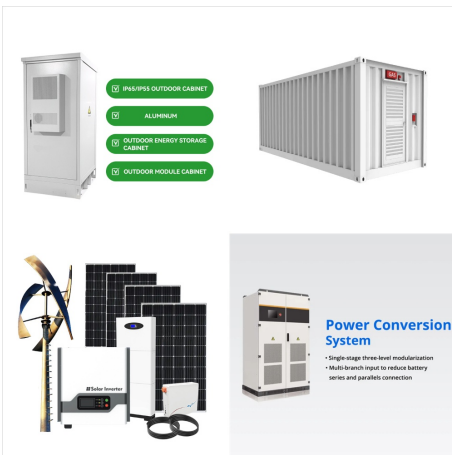


T-branch connectors are a combination of MC4 connectors and T-branch connectors, allowing for easy and efficient parallel connections between multiple solar panels. They are available as a pair of connectors, one male-to-dual female and one female-to-dual male, making it simple to connect two solar panels in parallel.

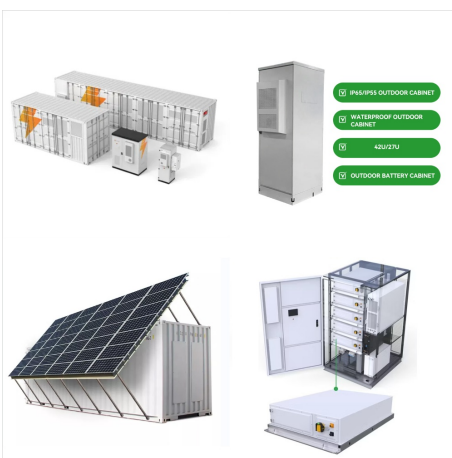
CONNECTING SOLAR PANELS IN PARALLEL WITH MC4 CONNECTORS



What is an MC4 connector (male connector & female connector) and an MC4 extension cable (8ft, 15ft, 30ft, 50ft, 100ft)? If you're asking this question, you've probably noticed that most modern high power solar modules are manufactured with wire leads that have MC4 connectors on the ends.



Parallel Connection with MC4 Connectors. When connecting solar panels in parallel using MC4 connectors, all positive terminals are connected together, and all negative terminals are connected together. This setup maintains a consistent voltage across all panels while increasing the total current output.



To connect a solar panel with MC4 connectors, you need an adapter like this (click to view on Amazon). This includes both the DC7909 and DC8020 connector, which makes it compatible with all Jackery models. I have a Jackery 500 with 2x100W newpowa solar panels in parallel. I noticed 2 interesting things : 1- The max input displayed is 56W

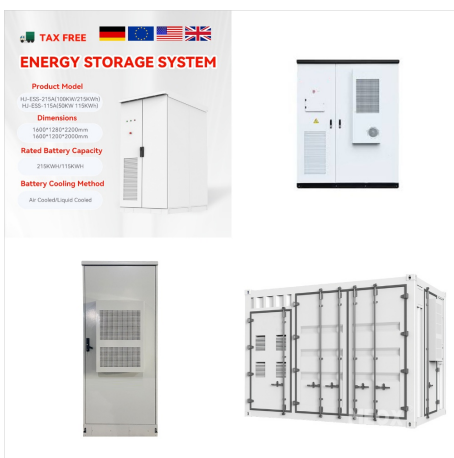
CONNECTING SOLAR PANELS IN PARALLEL WITH MC4 CONNECTORS



Required to connect 2 solar panels in parallel to recharge RIVER Series. Well Made Parallel MC4 Connector - How to Use. Frugal Repair . Click to play video. EcoFlow Y connectors for solar panel parallel connection. Tools. Electro. DIY . Videos for this product. 0:59 . Click to play video. Eco flow solar panels unboxing and setup. Curtis



Wiring solar panels in parallel in 5 steps. Connecting solar panels in parallel means joining the positive (+) terminals of all the panels together and connecting the negative (-) terminals of all the panels together. In comparison to a series connection, this requires branch connectors or a combiner box. Here is how to connect solar panels in



So i've been doing some research on connecting multiple solar panels in parallel, and most people seem to advise using a combiner box rather than MC4 branch connectors. But i've also seen quite a few videos that show the MC4 connectors. Also, Renogy sells a 400w kit that uses the MC4

CONNECTING SOLAR PANELS IN PARALLEL WITH MC4 CONNECTORS



Parallel connection of solar panels requires an additional element known as an MC4 combiner (or MC4 multi-branch connector); the nomenclature may vary with other types of solar panel connectors. The provided image depicts a 4-in-1 MC4 combiner, although these components can come in 2-in-1, 3-in-1, and other configurations.



MC4 Connectors, PV Systems - Discover the essentials of MC4 solar connectors in this comprehensive guide, covering their features, benefits, assembly, and installation in solar panel systems. Boost your solar investment with FRCABLE products. In this guide, we'll explore the importance of solar MC4 connectors, which are widely used in the solar



There are some major benefits to connecting solar panels in series. First, it allows you to get away with smaller wiring (since the current stays the same), which saves you quite a bit of expense and effort during the installation.

CONNECTING SOLAR PANELS IN PARALLEL WITH MC4 CONNECTORS



To connect the panels, use MC4 connectors which easily snap together with a noticeable click when tightly closed. However, there are some instances where connecting solar panels in parallel is the most efficient option: If you're connecting mismatched panels, wiring in parallel tends to result in lower losses than in a series.

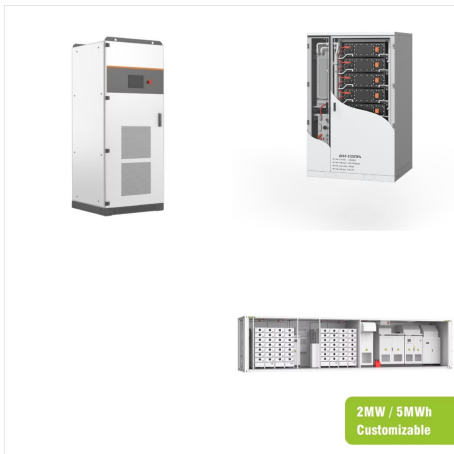


Hi John, Thanks for sending your inquiry. If your solar panels have MC4 connectors, yes you can use these to connect your panels in parallel. In the meantime, if you have further questions, please feel free to let us know and we'll do our best to help. Or you may call us at (909) 287-7111 Monday through Friday 8:30am - 3:00pm PST. Have a good day!



To install solar panel connectors in parallel, connect the positive lead of one panel to the positive lead of another panel; then repeat the process for the negative leads; MC4. The MC4 solar connector is an immensely popular type of connector. It boasts a high IP rating and UV-resistant material, making it fully resistant to harsh weather

CONNECTING SOLAR PANELS IN PARALLEL WITH MC4 CONNECTORS



An MC4 connector is the standard means of connecting solar panels. Male and female connectors have safety locks so they won't just come apart. They are also built for outdoor use and well suited for rooftop solar panels and RVs. How to Use MC4 Connectors in a Solar Panel Series. Connecting MC4 connectors to a solar panel series is easy.



These videos show how to connect two 100 watt solar panels in parallel and series using MC4 branch connectors. For a parallel connection, connect positive leads with one adapter and negative leads with another adapter, and then connect to the adapter kit.