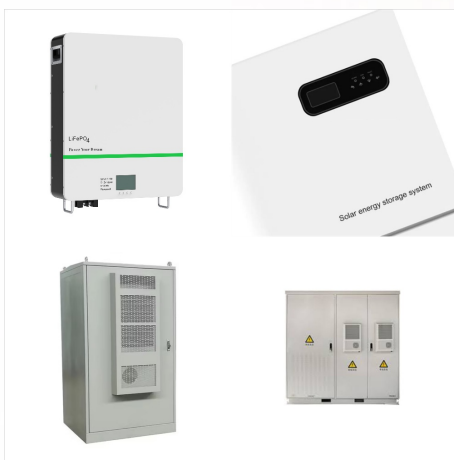




This is EVE 280K V3 version which is standard 0.5C 140Ampere Charge and 0.5C 140Ampere discharge. There are another EVE 280K V2 version which is standard Charge 1C 280Ampere and discharge 1C 280Ampere. V3 EVE280K a?|



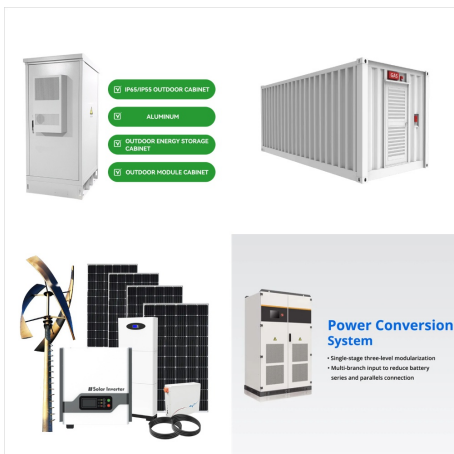
CATL 3.2V 280Ah lithium iron phosphate LiFePO<sub>4</sub> battery is a new model with an aluminum case produced by CATL, a leading lithium battery supplier from China; this battery cell has a super long cycle life of more than 12000times, have a stable performance used a?|



Not cheaper and lower quality Grade B Cells. EVE 3.2V 280Ah Prismatic LiFePO<sub>4</sub> cell. This battery is widely used in electric vehicles, electric motorcycles, solar power, energy storage, etc. Global delivery. experience since 2008 a?|



Experience the pinnacle of energy storage technology with the V3 LF280K Eve Prismatic Cells, a cutting-edge line of Grade A Lithium Iron Phosphate batteries, also known as LiFePO4 Prismatic Cells. Full certification, supporting documents are available upon request (UN38.3, Specification Reports & MSDS).



Hi all, Relatively new to the DIY battery route. Watched a load of Will's videos re Prismatic LiFePO4 cells and decided to go that route. Basically from my preview building as opposed to buying drop in LiFePO4 replacement is a no brainer when cost comparisons are made. My first question is



Not cheaper and lower quantity Grade B Cells. EVE 3.2V 280Ah Prismatic LiFePO4 cell. This battery is widely used in electric vehicles, electric motorcycles, solar power, energy storage, etc. Global delivery. experience since 2008 Accept payments a?|



Same Prices 4pcs EVE 3.2V 280Ah Prismatic LiFePO4 cells with Free Ship by Sea 48-60 Days to door Grade A in same matched batch. New and no any bulging. With M6 Stud and easy to connect with bus bars. With sufficient capacity. Not cheaper and lower quantity Grade B cells. This battery is widely used in electric vehicles, electric motorcycles



Ah LiFePO4 Batteriezellen a?? Brandneu Klasse A mit QR-Code. a?!659,00 a?!369,00. 4 Stuck / China (35-50 Tage) In den Warenkorb legen. Meistverkauft. HITHIUM280Ah LiFePO4 Batterie zellen-Kostenloser Versand und Steuern. a?!290,95 a?? a?!2.289,95.



VNSZNR EVE LiFePO4 Cell 280Ah 3.2V Battery 4pcs Grade A Deep Cycle Lithium Iron Phosphate Rechargeable Battery with Screws and Bus Bar, Power Supply for Solar Systems, Golf Cart, Motor, Off Grid 6. \$419.00 \$ 419. 00. 0:34 . Redodo 4 Pack 12V 100Ah Mini LiFePO4 Lithium Battery,



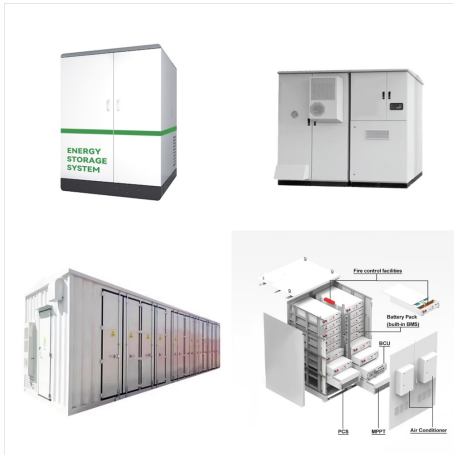
ah lifepo4 Cell Storage. The storage area must be dry, as free of dust as possible and well ventilated; Storage for prolonged period should be at 20a??25% SOC; The cells may only be stored in a designated cell room; Room must be dry and ventilated;



\*The Price is set for 4 matched LiFePO4 cells. \*Buy from EU Stock, tax-free, and Free shipping. Genuine automotive-grade LiFePO4 cell for Tier 1 Manufacturers. Voltage/Capacity/IR highly consistency ensures a long cycle life and exceptional discharge performance. Perfect replacement for AGM, GEL, SLA batteries.



The high-capacity LiFePO4 cell is perfect for all your power requirements, offering a nominal capacity of 277 ah and nominal voltage of 3.2V with an operat here's your ideal solution a?? ETC 3.2V 277Ah 280Ah LiFePO4 lithium iron phosphate prismatic battery cells. Buy your product now for long lasting quality performance! Specifications



LiFePO4-Akkus mit einer Kapazität von 280Ah vom renommierten Hersteller EVE Energy. Diese LiFePO Grade A-Zellen bieten eine Lebensdauer von bis zu 6000 Zyklen. Sie basieren auf der Lithium-Eisenphosphat-Technologie, auch bekannt als LiFePO4. Die Lipo Zellen werden gerne dazu verwendet Solarspeicher selber zu bauen. Sofort einsatzbereit



Ah LiFePO4 prismatic cells with 100% brand new grade A, highly consistent cells, over 6000 cycles, genuine for DIY, automotive, backup power, and energy storage. We establish strict criteria for the LiFePO4 cells we offer, choosing only batteries meeting the highest benchmarks for performance, longevity, and safety. This means



\*The Price is set for 4 matched LiFePO4 cells. \*Buy from EU Stock, tax-free, and Free shipping. Genuine automotive-grade LiFePO4 cell for Tier 1 Manufacturers. Voltage/Capacity/IR highly consistency ensures a long cycle life and a?





Ah. Lithium-Ionen Zelle mit LFP  
(Lithium-Eisenphosphat, LiFePO<sub>4</sub>) Chemie. Die LF280K Zelle wird vollautomatisch unter hohen Qualitätsanforderungen hergestellt. So kann eine gleichbleibende Leistung garantiert werden. Die Zelle ist auch als zusammengebaute Module verfügbar. Zum Online-Shop. Technische Parameter.



Buy HiXiMi EVE 280K LiFePO<sub>4</sub> Battery Cells 3.2V 280Ah 290Ah Lithium Battery Iron Phosphate Deep Cycle Grade A Cell, for RV, Boat, Golf Cart, Motor, UPS, Fish Finder, Lawn Mower, Off Grid, Solar Systems: 12V - Amazon FREE DELIVERY possible on eligible purchases.



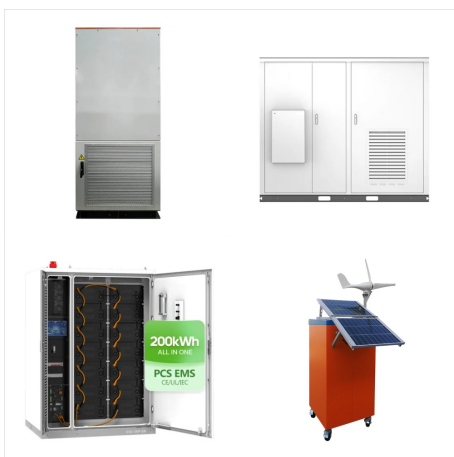
Lifepo4 Zellen, 3,2V, LiFePO<sub>4</sub> Battero Tech 280ah, 8000 Zyklen Brand new 3.2V 280Ah Cell with original QR. Battero Tech 280Ah LiFePO<sub>4</sub> Battery Cell CAD Drawing with Dimensions and Main Parameters . LiFePO<sub>4</sub> Battery Cell; Sign In/Up; My Orders; Settings; Sign Out; Weekly Deals! Shop with Discounts. Home. Best Sellers. LiFePO<sub>4</sub> Cells.



LiFePO4 Battery 3.2V EVE 280Ah Prismatic Cells deep Cycle for telecom ESS (Energy Storage System), grid ESS, household ESS, DIY solar battery, customized battery packs, energy back up, electrical engineering projects, equipment building and maintenance projects etc. 3.2V 280Ah lithium iron phosphate battery cell Nominal Voltage: 3.2V Nominal Capacity: 280Ah a?]



This is a Compression Kit for use on any LiFePO4 cell that is 204mm x 173mm x 72mm in size from many manufacturers like EVE, CATL, REPT, Trina. Cells in this size come in capacities of 280ah, 304ah, 314ah among others.



Get 4 of these 3.2V LiFePO4 Lithium Battery cells to make a 12V 200AH Lithium Battery. A-Grade & Brand New Prismatic Cells! Enjoy Free Shipping when you order 4\* 280Ah LiFePO4 cells or more. If your configuration is different from TYPE A B or C,



280ah lifepo4 Cell Storage. The storage area must be dry, as free of dust as possible and well ventilated; Storage for prolonged period should be at 20a??25% SOC; The cells may only be stored in a designated cell room; Room must be dry and ventilated; Store the cells on surfaces that provide electrical insulation;



Ah cell: Datablad LiFePO4 280Ah cell. Det ar viktigt att man ar medveten om att risken for kortslutning och dess konsekvenser okar for varje cell som kopplas i serie eller parallellt. God elkunskap erfordras. Vikt: 5.5 kg: Dimensioner: 17.4 x 7.2 x 22 cm: Storlek: 102Ah, 302Ah.



All cells are then batched based on IR and Capacity and grouped into sets of 4. For large orders, we will choose similar matching sets. 1 Busbars and 2 nuts included per battery 30 day warranty, 30 day moneyback guarantee. (LiFePO4) prismatic batteries. Grade A batteries typically have a higher energy density, longer lifespan, and better





The cells are rated for 8000. RJE is a high tech chinese LFP manufacturer, headed by one of the most respected leaders in Lithium Batteries and cars in China. The cells are rated for 8000. Skip to content. LiFePo4 B grade EVE a?|



12v 280Ah - EVE - EV Grade (A+) - 4000Wh - 8000 cycles - Lifepo4 cells Note: new version V3, 8000 cycles, production year 2024, original EVE terminal with double screw connection 4x EVE 280Ah EV Grade (A+) Lifepo4, 8000 cycles, LF280K individually tested and approved by EVE, delivered with test report, actual usable ca



3.2V 280Ah LiFePO4 Prismatic Battery BATTERO Cells quantity. Add to cart. SKU: LFPBT280AHAWLXXA Categories: Battero, China Stock, EU Stock, LiFePO4 Cells 3.2V, US Stock. Description Specification Advantages of Lightning About Lightning Item: Performance: Battery Model: BATTERO PC-0B1-72174L4-AH: