

What is a containerized data center?

Containerized data center is a concept that is one of its kind, innovative, beneficial, and equally challenging. The idea of making your data centers in a container was first introduced in 2007. And since then, numerous international companies have adopted this way of keeping their IT infrastructure well-organized, secure, and at easy access.

Can a single point of failure shut down a container data center?

A single point of failure can shut down an entire container data center. Finding the right location can sometimes be challenging as they tend to work on different cooling systems. The possible options are air and water. Consequently, the favored cooling system will disturb the planning, affect the place, and locate the data center.

How long does it take to build a datacenter?

A traditional datacentre takes 18 to 24 months to build. With the fully modularized design concept, Delta's containerized datacenter is flexible and scalable with only a few weeks or months for deployment to meet the rapidly growing IT needs. Highly integrated. Highly reliable.



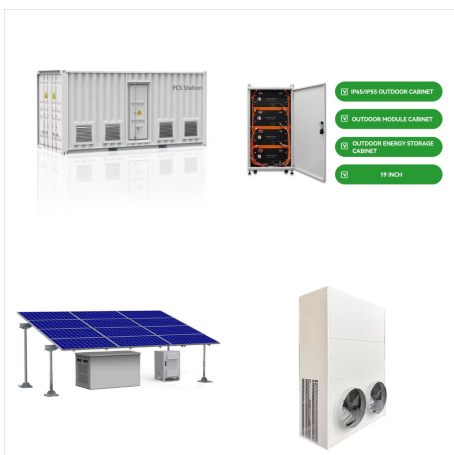
The ubiquity of new technology, from smart phones to 3D-printers, is a sign that the fourth Industrial Revolution is upon us. Feeling the impact of this technological shift, China is striving to advance Industry 4.0 through its investment in an expanded network of data centers. The global currency of the new technological market.. The Rise of the Chinese Data Center Market



Lider em Container * Data Center Outdoor on-demand. DATA CENTER MODULAR EM 90 DIAS. Nao e mais um container, isso ficou no passado. Construimos solucoes personalizadas para Data Centers de ultima geracao. Gemelo - A maior empresa de implementacao e manutencao de Data Centers da America Latina.



CTM, the leading telecommunication service provider in Macao, owns the world-class data center located at the CTM Telecentro covering an area of 1150 square meters and a floor height of 4.6 meters high. designed according to the international standards below: - TIA-942 Tier III International Standard - The latest cold aisle containment technology - The environment a?|



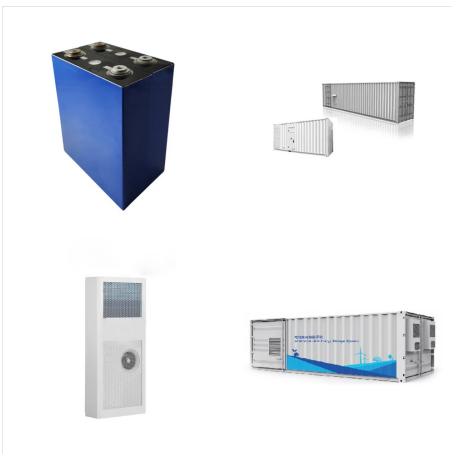
Delta InfraSuite Datacenter Infrastructure Solutions with its integrated design and scalable system architecture supports customers in building an optimal datacenter with fully-integrated infrastructure solutions. We offer micro data center, POD, containerized data center and power container solutions.



Macau facts from the CIA World Factbook: Location: Eastern Asia, bordering the South China Sea and China Natural hazards: typhoons Telecommunications: general assessment: fairly modern communication facilities maintained for domestic and international services domestic: termination of monopoly over mobile-cellular telephone services in 2001 spurred sharp increase in a?|



Easily expand your data center footprint with fully integrated, highly reliable, configurable MDCs. Minimize site work with all-in-one design, inclusive of power, cooling and security; Configure IT space with choice of 5 to 20, 48RU racks supporting 5 to 115 kW per rack; Supports DL to IT;



Based on the EU Directive 95/46/CE issued in 1995, Portugal promulgated the Personal Data Protection Law 68/98 in 1998. Macao SAR, China started the legislative work on personal data protection in 2002. Based on Portugal's Personal Data Protection Law, combined with the local conditions of Macao SAR China, Macao Law 8/2005 was formed.



CTM, the leading telecommunication service provider in Macao, owns the world-class data center located at the CTM Telecentro covering an area of 1150 square meters and a floor height of 4.6 meters high. designed according to the international standards below: - TIA-942 Tier III International Standard - The latest cold aisle containment technology - The environment a?



Our all-in-one container data centers are the perfect solution for extra computing power for distributed edge solutions. These modular plug-and-play data centers are so secure and reliable that companies now use them as main data centers by default. Features such as cold aisle containment, raised floors, full redundancy and construction to Tier



DPS tests their data centers before they deploy to ensure high system integration and reliability. Watch how DPS builds their containerized data centers. Pros and Cons of Containerized Data Centers. The benefits of a a?



Each data center container is made from superior aluminum and static dissipative foam to ensure a 10+ year field life. Customized capacity comes standard, and the interior is designed to easily change, allowing it to scale with your operation as you grow. Compatible with Open Rack Version (ORV) standards ORV2, ORV3, ORV3-HPR.



Cloudflare's 127th data center is now live in Macau, helping make over 7 million Internet facing applications safer and faster. This is our 44th data center in Asia. Cloudflare 127, 7,000,000 a??a??



A containerized data center, also known as a modular data center, is a data center within a container. For companies that need to increase IT capacity quickly, affordably and temporarily, containerized data centers are a great option, and customized modular data centers can more permanently scale services and support.



B is a prefabricated modular data center solution for small and medium outdoor data centers, which applies to multiple industries. Its modular design and prefabricated delivery halve the time-to-market (TTM). It integrates smart cooling, power, and O&M solutions to help customers build green and smart data centers.



Es la primera decision que es necesario tomar y se hace basada en la cantidad de gabinetes o racks que se desean tener en el data center. Un container ISO de 20FT puede albergar 7 u 8 racks con una capacidad de hasta 60KW, junto a?



Prime containerized moveable data center is assembled in well-built compartments the size of regular modular transportation containers. The average sizes range from 20ft, 30ft, and 40ft dimensions. racking, cabling and a?|



Mobil, modular, robust und absolut zuverlässig
Unsere all-in-one Container-Rechenzentren sind die perfekte Lösung für extra Computing-Power für dezentrale Edge-Lösungen. Diese modularen plug-and-play Data Center sind so sicher und zuverlässig, dass Unternehmen sie mittlerweile standardmäßig als Hauptrechenzentren einsetzen. Ausstattungen wie Kaltgangeinhausung, a?|



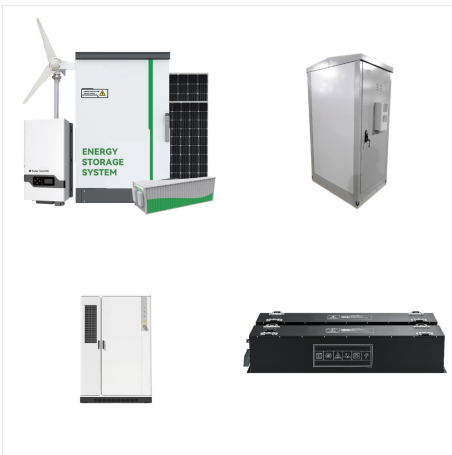
Bala Pitchaikani is Vice President, Product Line Management, at Force10 Networks (recently acquired by Dell), where he is focused on delivering open, standards-based products and solutions for high-performance data centers.. Bala-Pitchaikani-tn. BALA PITCHAIKANI Force 10 Networks. Whether seeking to distribute their data center assets to a?|



Modern data centers are remarkably technologically complex, and keeping them running safely and efficiently requires continual close monitoring and management. Among the most important various tasks facing data center managers is maintaining the right temperature.



Sao oferecidas no mercado duas solucoes: o Data Center Container e o Data Center Modular Outdoor. O Data Center Container e um ambiente pre-fabricado e pre-montado que se oferece como uma boa solucao para demandas reduzidas e temporarias, destacando-se pela facilidade de instalacao e por ser muito pratica para locais remotos.



Vertiv global solutions" micro data centers align power, cooling, monitoring, and racks with business needs and constraints. Our solutions team works with you from developing the initial requirements all the way through project execution, allowing you to focus on your core business.



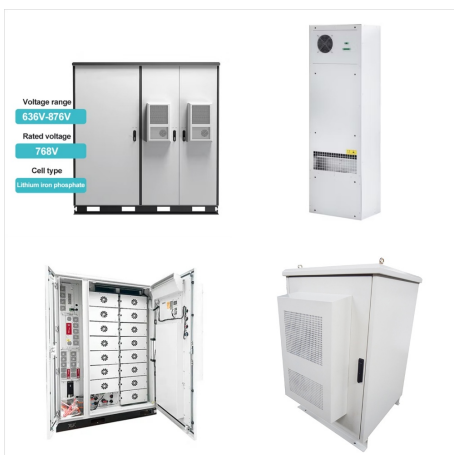
Australian data center firm DUG had deployed a demonstration immersion cooling data center pod in Maryland. DUG, best known as an early adopter of immersion-cooled data center designs, has deployed a Nomad container at the Adacen data center in Silver Spring, Maryland, to demonstrate the prototype to customers.



Container: Estandar ISO 40 pies (12 metros)
 Gabinetes: 8*42 Unidades de Rack C/U Energia:
 UPS con PDU * 1 +Gabinete con baterias*1 Tiempo
 de respaldo: 7.5min (carga plena) Densidad de
 potencia por gabinete: 6~9kW/gabinete Carga total
 del Data Center: 54kW Enfriamiento: AA tipo en fila
 (In Row),3+1 para redundancia Capacidad
 Sensible: 25kW/por AA Configuracion: a?|



A traditional datacentre takes 18 to 24 months to
 build. With the fully modularized design concept,
 Delta's containerized datacenter is flexible and
 scalable with only a few weeks or months for
 deployment to meet the rapidly growing IT needs.
 a?|



Data Center Container IT-Container im
 Baukastenprinzip -Die modularen Rechenzentren im
 Container bieten die perfekte und skalierbare
 Losung a?? ob individuell fur Mittelstands-, Cloud-
 und Edge-Anwendungen oder vorkonfigurierte Data
 Center Container. zuruck zur Übersicht .



The Guangdong-Hong Kong-Macao Greater Bay Area (GBA) is accelerating the building of a national real-time computing hub, as the Shaoguan data center cluster was officially unveiled on May 29. [Photo: Nanfang Plus] Between May 28 and May 30, the first GBA computing industry conference was held in Shaoguan, Guangdong. It is also the first of its



ZTE modular data center integrates all the subsystems including: cabinets, base, aisle containment, in-row cooling, power distribution cabinet, power supply, batteries, lightning protection, lighting and management system in one architecture. It a?|



Built into a standard 40-foot container it can be installed anywhere there's suitable power and a concrete pad for the container. the Azure Modular Data Center ticks many of the boxes for