



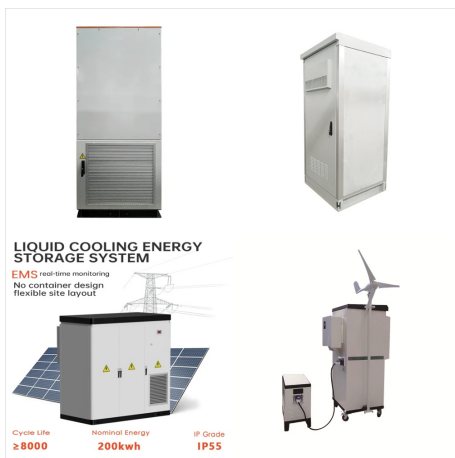
Alpha Technologies provides the Cable TV/Broadband, Industrial and Renewable Energy industries with the most reliable, technologically advanced and cost-effective powering solutions available. Alpha offers innovative powering solutions that are designed for the future; built to support expansion and provide unlimited opportunity. Widely used in cable television, ???



Solar DC Cable is an essential component of solar power systems, connecting solar panels to inverters, charge controllers, and other electrical devices. To. They are responsible for carrying the DC power between these ???



We install DC Power Plant Systems and provide maintenance to identify and correct problems before they become critical. DC Power Plant Installation Services Alpine's critical power experts have experience in Engineering, Furnishing, Installing and ???



Complete -48V DC power system design and integration to your parameters??-: ???rectifiers??-, ???distribution, circuit breaker??-s, ???alarms, and monitors??. the next generation of robust power plants. The Commander II Series offers top of the line power and reliable performance while providing complete customization when it comes to



Alpine can curate a custom preventative maintenance program for your 24 volt and 48 volt DC Power Systems. Alpine Power Systems is a national critical power service provider that provides turn-key critical power solutions for the Telecommunications, Utility, Data Center and Renewable Energy industries.



Medium DC Power Systems, 10 kW to 300 kW Power Capacity Modular, flexible design for switching, wireless base stations, transmission, LAN, WAN & other networking operations. NetSure Accessories Batteries and more for DC power systems. NetSure 7200 Series The NetSure 7200 DC power system is an efficient and reliable multi-bay power



The Infinity S-Flex DC power system is a compact power plant that supports 48V operation through the use of a comprehensive range of advanced rectifiers. The Infinity S-Flex power system can support an output capacity up to 27kW and be equipped with one or two distribution heads. Each distribution module is 3U (133mm) tall and accommodates up



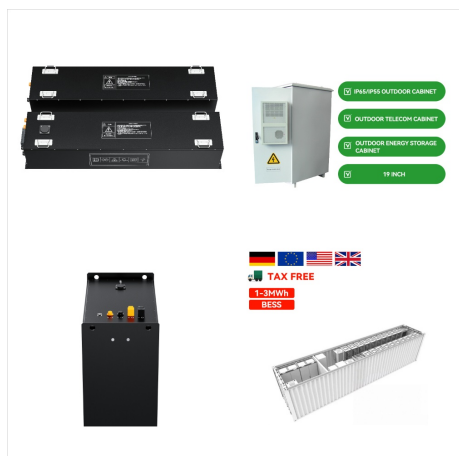
The OmniOn Infinity S DC Power system, by OmniOn Power???, is a compact power plant that supports dual voltage (+24V/- 48V) operation through the use of a comprehensive range of advanced rectifiers and DC-DC converters. Primary voltage is supported by rectifiers and battery reserve, while secondary voltage is supported by DC-DC converter modules.



Ability to Engineer, Furnish & Install DC Plants nationwide for all DC Power System manufacturers. DC & AC Power Knowledge and Expertise. Services for complex site engineering and startup / deployment programs; full operations and lifecycle management. Highly Trained & Certified Engineering & Service Technicians. All power plant engineering and



Whether you're considering the purchase of new or refurbished telecom power systems or DC power plants and need assistance in specifying a system, or maintenance and repair for your present system, our staff can supply comprehensive, on-site services. Our experience, knowledge, and reputation for quality have made us number one with manufacturers and ???



facilitates power plant sizing to application needs. Beyond reducing operating costs, Vertiv has maximized the value of eSure rectifiers by making them backwards compatible with existing NetSure DC Power Systems. Both unit types can be used in a system together. The eSure rectifier provides up to 100% of rated power at 55°C. As the

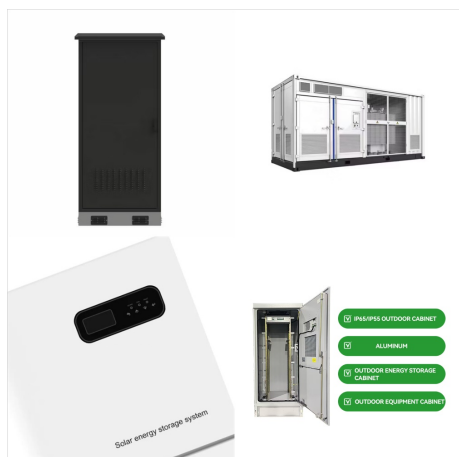


ABB DC Power Systems, ABB/GE CP, include power-switching products, UPS, DC power systems, solutions for Small Cell and DAS, and inverters. Skip to content. The OmniOn GPS 2436 Large DC Power Plant, by OmniOn ???



What is an Electric Power System? An electric power system or electric grid is known as a large network of power generating plants which connected to the consumer loads.. As, it is well known that "Energy cannot be created nor be destroyed but can only be converted from one form of energy to another form of energy". Electrical energy is a form of energy where we transfer this ???



Contact Spang for more information on custom DC Power Systems. Historical experience, application knowledge, and a strong technology focus have elevated Spang to consistently being a global leader in the supply of custom DC power systems. Other applications for Spang DC power systems include:



Configuration Defined. Telecom and wireless networks typically operate on 48 volt DC power. But unlike traditional 12 and 24 volt systems which have the minus (-) side of the battery connected to ground (i.e. called negative ground systems), telecom batteries have the plus (+) side of the battery connected to ground, called a positive ground system, also designated as "negative 48 ???



The Vertiv line of DC power systems demonstrates unparalleled reliability and industry-leading efficiency ratings at -48 and +24 VDC. Emerson/Vertiv Network Power rectifiers ??? the heart of the power system ??? possess some of the highest power densities and smallest footprints in the business. These power solutions can be further enhanced



DC voltage 110 V or 220 V. A power substation can have one or several DC systems. Factors affecting the number of systems are the need for more than one voltage level and the need for duplicating systems. Today, normal DC auxiliary supply systems in power substations are operating either on the 110 V or 220 V level, though lower levels exist.



Eltek's Compact DC Power System is an industry-leading system optimized for the demanding power needs of wireless communications and broadband access equipment. Requiring only 2RU (87.6mm) of rack height, the Compact DC Plant is the optimal flexible solution for ???



Alpha builds on its extensive experience in serving the Telecom, Data Center, Cable TV, Security and Traffic markets to deliver the broadest assortment of DC power solutions. Our solutions range from multi-bay systems for large switching offices to small shelf systems that can mount on a wall, or occupy a single rack space.



DC voltage 110 V or 220 V. A power substation can have one or several DC systems. Factors affecting the number of systems are the need for more than one voltage level and the need for duplicating systems. Today, ???



The Eltek scalable DC power system offers an array of configurable components that come together to produce large-scale, high-power solutions???up to half a million watts! Plant Configurations; Scalable plant design consists of at least ???



Solar DC Cable is an essential component of solar power systems, connecting solar panels to inverters, charge controllers, and other electrical devices. They are responsible for carrying the DC power between these components. Battery cables are generally larger in size, ranging from 2-4/0 AWG, depending on the system capacity and the



The bio-power generation system consists of a 35m³ floating drum plant, a gas purifier, a gas engine, a 2.5 kW 400 V DC Shunt Generator, and a 3 kW 400 V DC-DC boost converter. It is known that the biogas power plant is a renewable power source that can supply power locally or it can be connected with the other sources in a microgrid.



Alpine Power Systems provides nationwide comprehensive cradle-to grave DC Power Plant services including engineering, furnishing, installations, preventative maintenance, repairs, decommissioning, and recycling of DC Power Systems.



, SENS has been leading the charge and offering superior DC power systems and utility-grade battery chargers, ensuring our customers can accomplish their mission. With the team at PBT and their battery monitoring solutions joining the fold, the SENS team is ready to help you make backup battery problems a thing of the past.



The UNIPOWER family of DC power systems include the Aspiro, Guardian, and Sageon. These DC power systems are available in cabinetized, dual voltage, hybrid, or rack-mountable format with capacities ranging from 45A to 6750A. Aspiro DC power systems are 1RU and 2RU rack-mount from 45A to 90A at -48V.