

Are there any hardware implementations of dilithium?

In this regard, we are only aware of a two existing hardware implementations of Dilithium [13,16], while several optimized software implementations, e.g., targeting AVX2 or Cortex-M4 architectures, have been presented recently.

How does dilithium produce a warp?

Dilithium converts the energy from M-AM reactions into some sort of subspace energy (this at least has some basis in canon). This energy either creates some type of plasma, or is transferred to plasma, creating warp plasma. This plasma is transported via the EPS system to the warp coils, which in turn generate the warp fields.

What is dilithium and how to use it?

Dilithium is a digital signature scheme that is strongly secure under chosen message attacks based on the hardness of lattice problems over module lattices. Simple signing of PDFs in node. Ed25519Signature2018 Linked Data Proof suite for use with jsonld-signatures. Simple Web3 onboarding with Ethereum wallets.

How do I look up a system that has dilithium in them?

Before we share systems that have Dilithium in them, remember that you can look up any system by name using the bookmark system. Simply tap on the bookmark button in the bottom right corner of the screen, then tap on "search coordinates". You can punch in the system's name to be taken right to it.

Is dilithium a 'hypersonic' element?

[b]Dilithium is a member of a so-called 'hypersonic' series of elements, according to a fictional periodic table graphic presented in episodes of Star Trek: The Next Generation and Star Trek: Deep Space Nine (1993-1999).

Is dilithium reusable?

Dilithium is shown to be recyclable/reusable. While we never get an explanation for how it works, the name seems to suggest a few possibilities- Dilithium Incubators (ST: Runaway, DIS: Such Sweet Sorrow)- Crystal incubators exist in real life (kinda), so this (Dilithium Incubator) may do something similar to its function.



Dilithium is an element, a member of the hypersonic series, primarily occurring as a crystalline mineral. It was a critical component of warp drive. (DIS: "That Hope Is You, Part 1") Alternative local names for dilithium included radan and winter's tear. (TOS: "Elaan of Troyius"; VOY: "Muse") Dilithium consisted of spiral molecules. (TAS: "The Terratin Incident") Under certain rare



Dilithium can be mined throughout the Neutral Zone and the Faction Zones, Dilithium Locations []  
System Zone Found Node Size Warp Range  
Altanea (38) Romulan 10k 38 Asiti Alpha (20)  
Neutral 10k 20 B"O'h (42) Klingon 100k 70 Babel  
(38) Federation 14k 40 ???



In Star Trek Fleet Command, players will need a blue mineral called Dilithium to research new technologies. Out of the three basic resources, with Parsteel and Tritanium being the other two, Dilithium is easily the rarest resource to come across. Today, we'll show you where to mine for more Dilithium in our Star Trek Fleet Command: Dilithium mine locations guide!



Considering Cochrane built the phoenix out of a nuclear missile, I've always assumed he used the nuclear materials as a power source. Dilithium is used to regulate the matter/anti-matter reaction in Federation, Klingon, and several other civilizations' warp cores, but barring a few instances in TOS it isn't a power source.



Key learnings: Power System Definition: An electric power system is a network designed to efficiently generate, transmit, and distribute electricity to consumers.; Voltage Regulation: Managing voltage levels through transformers is crucial for minimizing energy loss and ensuring safe, efficient power delivery.; Transmission Importance: High voltage ???



Dilithium crystals changed form and placement - compare "The Alternative Factor" and "Elaan of Troyius". It was only in TMP that we see something on-screen that looks anything like the warp core seen in TNG. TOS also established that dilithium crystals played some kind of key role in the power system. In some of the earliest episodes of



THE ROLE OF DILITHIUM. The key element in the efficient use of M/A reactions is the Dilithium crystal. This is the only material known to Federation science to be non-reactive with anti-matter when subjected to a high-frequency electro-magnetic (EM) field in the megawatt range, rendering it "porous" to anti-deuterium (the anti-matter fuel of Federation starships).



The National Institute of Standards and Technology (NIST) has selected the CRYSTALS-Kyber Key Encapsulation Mechanism and the CRYSTALS-Dilithium Digital Signature algorithm as primary PQC standards. ???



A tool to configure the Dilithium Power Systems" Photon1 MPPT over CAN using the Ewert Energy Systems" CAN Adapter. Resources. Readme License. MIT license Activity. Custom properties. Stars. 0 stars Watchers. 2 watching Forks. 0 forks Report repository Releases No releases published. Packages 0.





The AS system is also never actually explained the way that Federation Warp Drives are so Dilithium could still be just as necessary for the AS system as the M/ARA systems used by other species. None of this is actually relevant since all of these species have Fusion Reactors which power everything that doesn't go faster than Warp 4.



But thanks to the dilithium crystals enabling warp power, the warping of space probably enabled resupply of fresh matter (especially in a solar system) That's depends on what kind of load the ship's power system is under and how the crystals are removed, IMHO. 1. In "Mudd's Women", the ship is at or above full power levels causing the



Master Control Unit MCU Thunderstruck's Dilithium Design Master Control Unit MCU is our newest offering for the DIY EV enthusiast Combining features from our BMSC EVCC and Dilithium Display this device controls battery management charging and display functions from a single platform It has The standard EV system using the MCU includes our



The Dilithium Battery Management System is designed to monitor lithium battery packs. The System Connections Isolated 12V power should be connected to +12V and GND. The BMS should be powered when the vehicle is being driven or charged. For use with the Thunderstruck EVCC, the BMS may be



BMS products from our partner Dilithium Design provide these features and more. The Dilithium Design Master Control Unit (MCU) These are 12 Volt Systems powered by a 12 Volt supply. Do Not connect these components to motor controller key switch circuits. Key switch circuits may provide full pack voltage, which would destroy the BMS.



The BMSC processor has system interfaces for 12v power, CAN, status outputs (LP1, LP2), and it contains the firmware for the BMS. The BMSC is configured using a serial interface or by CAN messages using the Dilithium Design Display. Each measurement board has two LTC measurement devices ("LTC A" and "LTC B"). Each



Dilithium Power Systems Profile and History.

Dilithium Power Systems is a supplier of electronics for solar race cars. We strive to build the most reliable, efficient and easy to use products ???



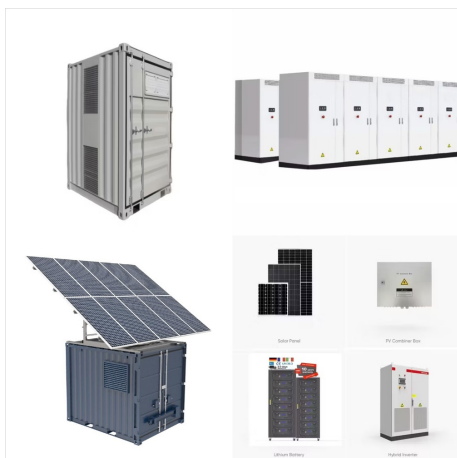
MSU's Solar Car Racing Team currently uses

Dilithium Power Systems "Photon Quad MPPT."

Dilithium is a supplier of MPPTs exclusively for solar car racing teams. Figure 1-3: Current MPPT of MSU's Solar Car Racing Team It features four independent channels optimized for SunPower A300, C50, and C60 cell arrays.



I'm trying to install the CAN Logger software from the Dilithium Power Systems website but everytime I try to detect the device from any computer I get the same error: Any recommendations to solve this problem or alternative sources to downloading the software. Also in the documentation it mentions uploading parameters, what are the parameters



- Grade 6 (G6) will come with its own set of grade-specific resources,- sigma resources (??-Parsteel, ??-Tritanium and ??-Dilithium), that will be available to obtain from generators (level 61 onwards), refined from their raw version (players can only mine these resources with G6 survey ships) and station raiding from level 61 onwards.



by profled deep learning-assisted power analysis. In the frst variant, one half of the coefcients of s. 1. and s. 2. is recovered by power analysis and the rest is derived by solving a system of linear equations based on  $t = As. 1 + s. 2$ , where A and t are parts of the public key. This case



Dilithium Design BMS March 2017 -4- Architecture  
This section describes the BMS architecture. The figure below is a block diagram of the BMS Controller and BMS Satellite. Figure 1 ??? BMSC and BMSS Block Diagram The BMSC processor has the system interfaces for 12v power, CAN, and a cell loop. The measurement boards have two LTC measurement chips.





The value chain of the Federation's economy most likely includes the following few stakeholders: dilithium explorers and miners, dilithium transporters/shippers, dilithium power plant operators, power grid operators, B2B replicator manufacturers (those replicators that replicate replicators), replicator owners, and replicator maintenance



The Joint European Torus (JET) magnetic fusion experiment in 1991. Fusion power is a proposed form of power generation that would generate electricity by using heat from nuclear fusion reactions a fusion process, two lighter atomic nuclei combine to form a heavier nucleus, while releasing energy. Devices designed to harness this energy are known as fusion reactors.



Dilithium,  $\text{Li}_2$ , is a strongly electrophilic, diatomic molecule comprising two lithium atoms covalently bonded together.  $\text{Li}_2$  has been observed in the gas phase has a bond order of 1, an internuclear separation of 267.3 pm and a bond energy of 102 kJ/mol or 1.06 eV in each bond. [1] The electron configuration of  $\text{Li}_2$  may be written as  $1s^2 2s^2 2p^6 3s^2$ . [citation needed]



DESEVE: Captain, Romulan ships use a forced quantum singularity as a power source. If that system is not functioning perfectly or is damaged even slightly, it might show through the cloak as a magnetic disturbance of some kind. Was the Federation 100% dependent on dilithium catalyzed M/AM reactions for power generation across all of their