

How do you dispose of lithium batteries?

To dispose of lithium batteries, you'll need to take them to a recycling center, which is easy to find online. Keep batteries out of your regular recycling bin. Household batteries are recycled separately from other items. Mixing batteries in with other recyclables can result in a fire, as the battery can spark.

Can lithium ion batteries be recycled?

Lithium-ion batteries and devices containing these batteries should NOT go in household garbage or recycling bins. Lithium-ion batteries SHOULD be taken to separate recycling or household hazardous waste collection points. To prevent fires, tape battery terminals and/or place lithium-ion batteries in separate plastic bags.

What is the purpose of recycling lithium-ion batteries?

The purpose of recycling lithium-ion batteries is to avoid toxic electronic waste from clogging the landfills and to use the retrieved materials in the fabrication of new products. If you want to dispose of or recycle your old batteries, here are 4 steps you can take to safely recycle them.

Can you put lithium batteries in the trash?

Unlike alkaline batteries, lithium batteries are reactive and contain hazardous materials. For this reason, you should not put them in the trash. To dispose of lithium batteries, you'll need to take them to a recycling center, which is easy to find online. Keep batteries out of your regular recycling bin.

Where can I drop off a used lithium ion battery?

Instead, EPA recommends that all household lithium batteries be dropped off at battery collection sites (e.g., often located at electronics retailers) or household hazardous waste collection facilities for proper management. The EPA Used Lithium-Ion Batteries web page offers resources to find a battery recycling location near you.

How do you store lithium ion batteries?

To prevent fires, tape battery terminals and/or place lithium-ion batteries in separate plastic bags. Lithium-ion (Li-ion) batteries are used in many products such as electronics, toys, wireless headphones, handheld power

# DISPOSAL OF LITHIUM ION BATTERY



tools, small and large appliances, electric vehicles and electrical energy storage systems.



Discusses the general dangers of shipping lithium batteries, what consumers should do, and steps shippers and carriers need to take when disposing and recycling lithium batteries and equipment/products containing lithium batteries.

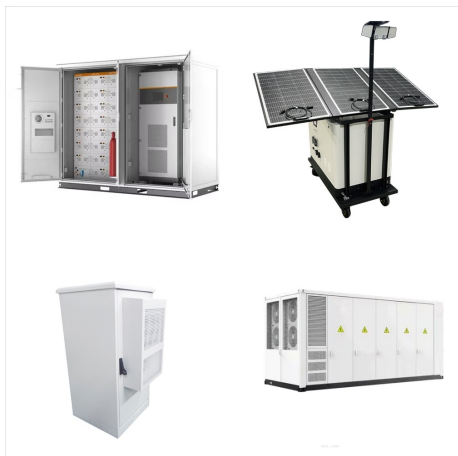


Lithium-ion (Li-ion) batteries and devices containing these batteries should not go in household garbage or recycling bins. They can cause fires during transport or at landfills and recyclers. Instead, Li-ion batteries should be taken to separate recycling or household hazardous waste collection points .



Lithium-ion batteries are hazardous waste if they're discarded, but they're a valuable resource if they're recycled. Because they're hazardous, some states legally require battery recycling. And

# DISPOSAL OF LITHIUM ION BATTERY



Ship Your Batteries. Whether you need to recycle your batteries once or on a recurring basis, Call2Recycle(R) offers battery recycling options for small and large quantities. Visit our store. Explore Program Options. Learn about ???

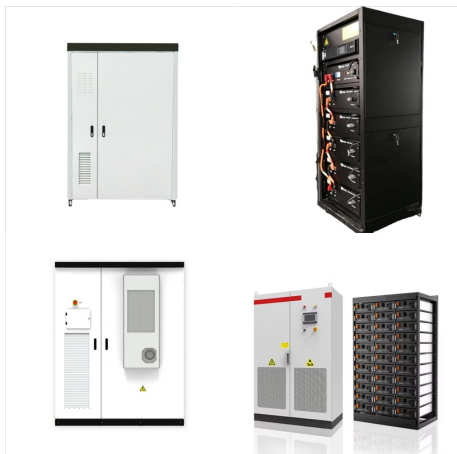


Lithium-ion Battery Recycling Safe recycling of lithium-ion batteries at end of life conserves the critical minerals and other valuable materials that are used in batteries and is a more sustainable approach than disposal. Lithium-ion battery recycling is frequently a multi-step process.



Rechargeable Batteries ??? Rechargeable batteries are a responsible choice for portable energy and the Rechargeable Battery Recycling Corporation (RBRC), a nonprofit public service organization, targets four kinds of rechargeable batteries for recycling: nickel-cadmium (Ni-CD), nickel metal hydride, lithium-ion, and small-sealed lead for

# DISPOSAL OF LITHIUM ION BATTERY



Do not attempt to modify lithium-ion batteries. Modifying lithium-ion batteries can destabilize them and increase the risk of overheating, fire and explosion. Read and follow any other guidelines provided by the manufacturer. Storage. Store ???



Ship Your Batteries. Whether you need to recycle your batteries once or on a recurring basis, Call2Recycle(R) offers battery recycling options for small and large quantities. Visit our store. Explore Program Options. Learn about Call2Recycle's range of convenient battery recycling offerings and identify the best fit for your business or organization.



Implementation Timeline. On and after January 1, 2026, Consumers will be required to pay a covered battery-embedded waste recycling fee. This fee will apply when purchasing a new or refurbished CBEP. On or before August 1, 2027, CalRecycle and DTSC will review the covered battery-embedded waste recycling fee for CBEPs. Upon review, we will make fair and ???



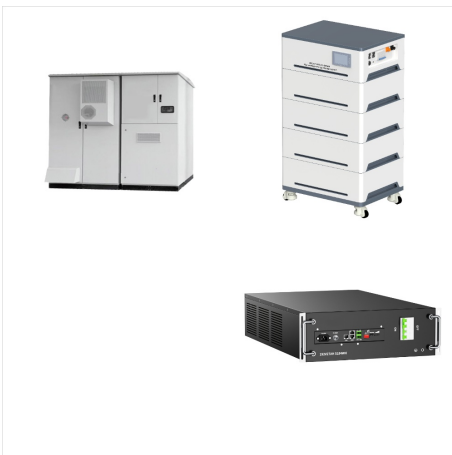
# DISPOSAL OF LITHIUM ION BATTERY



Improving the "recycling technology" of lithium ion batteries is a continuous effort and recycling is far from maturity today. The complexity of lithium ion batteries with varying active and inactive material chemistries interferes with the desire to establish one robust recycling procedure for all kinds of lithium ion batteries.



Electric-Car Battery Recycling. While EV batteries hold 20 to 100 times more energy than those used by hybrids, they're recycled pretty much the same way as the smaller ones. The packs are shipped



Recycling used lithium-ion batteries (and the devices that contain them) will help address emerging issues associated with the clean energy transition and prevent problems caused by inappropriate battery disposal.

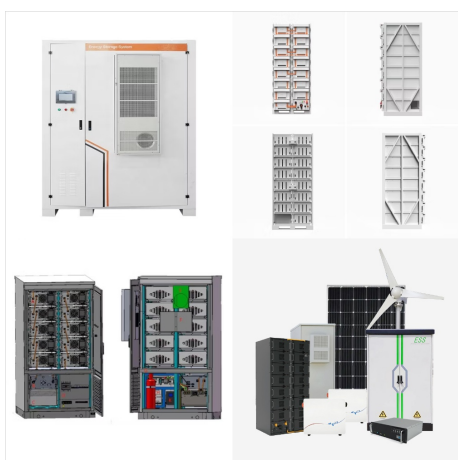
# DISPOSAL OF LITHIUM ION BATTERY



Recycling companies dispose of the components of rechargeable batteries properly. The metals and chemicals don't end up in streams and landfills. The Home Depot has partnered with Call2Recycle, a nonprofit battery recycling program.

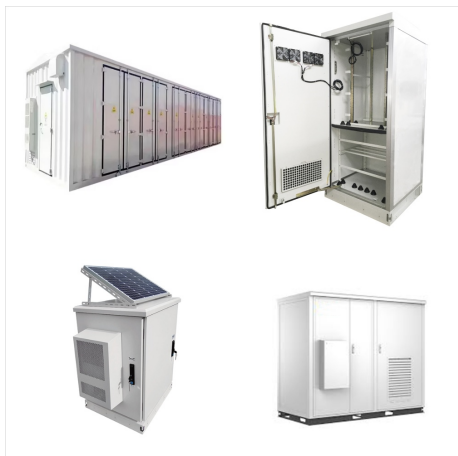


During trash collection and processing, batteries often get punctured or crushed, which can damage the separation between the cathode and anode, causing the battery to catch fire or explode. Lithium-ion batteries **SHOULD** be taken to separate electronics recycling drop-off sites or household hazardous waste collection events.



How should consumers dispose of batteries? Lithium-ion batteries can be recycled, but only at permitted treatment facilities. When discarded, they must be disposed of at a household e-waste collection point or battery-recycling drop off location. Of course, the electrical hazard needs to be carefully considered.

# DISPOSAL OF LITHIUM ION BATTERY



There are two types of lithium batteries that U.S. consumers use and need to manage at the end of their useful life: single-use, non-rechargeable lithium metal batteries and re-chargeable lithium-poly-mer cells (Li-ion, Li-ion cells). Li-ion batteries are made of materials such as cobalt, graphite, and lithium, which are considered critical



The EPA Used Lithium-Ion Batteries web page offers resources to find a battery recycling location near you. Household hazardous waste is regulated on the state and local level and state regulatory requirements for batteries may be more stringent than those in ???

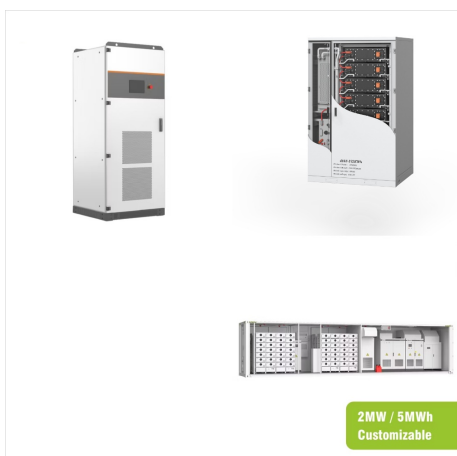


Recycle your batteries safely & responsibly with the country's largest, most reliable battery recycling program. Learn more today. [home](#); [about](#); [contact](#); [find drop-off location](#); [store](#); [cart](#); [bol wizard](#); 1-877-723-1297 ???

# DISPOSAL OF LITHIUM ION BATTERY



Recycling lithium-ion batteries at home is not recommended due to safety and environmental concerns. Instead, take used batteries to designated recycling centers or drop-off points at local retailers. Some communities offer mail-in recycling programs for convenience. Always follow local regulations and guidelines for safe disposal.



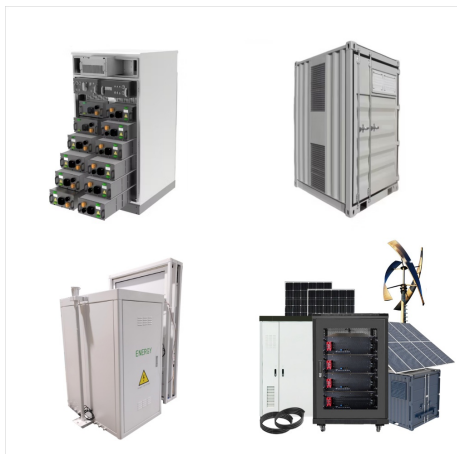
EPA aims to develop collection best practices that cover a wide array of small, medium (or mid-), and large format battery chemistries (lithium-ion, nickel-cadmium, etc.) and uses (consumer products, e-scooters, electric vehicles, industrial storage). The collection best practices will identify best practices for communication and outreach



The purpose of recycling lithium-ion batteries is to avoid toxic electronic waste from clogging the landfills and to use the retrieved materials in the fabrication of new products. If you want to dispose of or recycle your old batteries, here are 4 steps you can take to safely recycle them. How to properly recycle lithium-ion batteries:



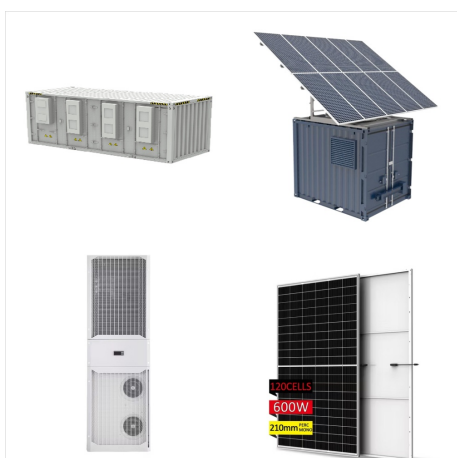
# DISPOSAL OF LITHIUM ION BATTERY



Lithium-ion batteries are hazardous waste if they're discarded, but they're a valuable resource if they're recycled. Because they're hazardous, some states legally require battery recycling.



Alkaline batteries may be put in the trash, but some battery retailers or other recycling locations may accept alkalines for recycling. Environmental and safety impacts of dry cell batteries. The materials in many types of dry cell batteries ??? including mercury, lithium, cadmium, lead and acids ??? have the potential to be hazardous wastes.



The purpose of recycling lithium-ion batteries is to avoid toxic electronic waste from clogging the landfills and to use the retrieved materials in the fabrication of new products. If you want to dispose of or recycle your old batteries, here are ???

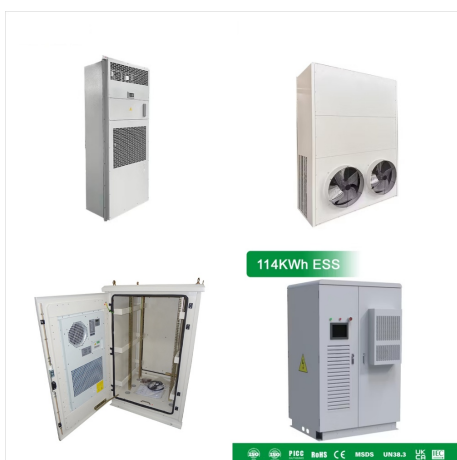
# DISPOSAL OF LITHIUM ION BATTERY



Check for the word "lithium" marked on the battery. Do not put button-cell, coin, or lithium single-use batteries in the trash or municipal recycling bins. Check with . Earth 911 to find a recycling location near you. Lithium. These common batteries are made with lithium : Single-Use (Li) metal and are non-rechargeable.



During the recycling process for lead-acid batteries, they are crushed. When lithium batteries are crushed in the same container, they explode. Lithium batteries need to be recycled and cannot go into the trash. It is also important to point out that placing Lithium batteries into regular recycling can cause fires at recycling facilities



Some batteries (e.g., lithium-ion) also contain cobalt and lithium, which are considered critical minerals, meaning they are essential in our society. When a battery is thrown away, those resources can never be recovered. Improper disposal of batteries, particularly those containing lithium, can cause fires or explosions. Additionally