

How do you dispose of lithium batteries?

Never dispose of lithium batteries with your household waste: depose them at a collection point. Do not place the batteries near heat sources and never throw them onto a fire. Never perforate the battery cover or try and weld/solder the battery. Risk of explosion if battery is incorrectly replaced.

How to safely dispose of lithium batteries?

Recycling spent lithium-ion batteries plays a significant role in alleviating the shortage of raw materials and environmental problems. However,recyc...

What happens if you dispose of old batteries the wrong way?

Disposing of batteries the wrong way could be harmful for your health,your home,refuse workers,and the environment. Readers like you help support How-To Geek. When you make a purchase using links on our site,we may earn an affiliate commission. Read More. Why Recycle Your Old Batteries? Can You Throw Away Batteries?



If you need to dispose of lithium batteries, look for a local recycling center instead of throwing them in the trash, which can cause a fire. To find a store near you that collects lithium ???



Dispose of used batteries immediately. (2) Risk of injury due to fire, explosion or leakage. Do not disassemble, charge, crush or expose to fire or high temperatures. Important: Coin Lithium batteries are not interchangeable. Both the diameter and thickness can vary based on the cell designation. While some device battery compartments may be



Primary lithium battery recycling. Primary lithium batteries are single-use, non-rechargeable cells available in multiple formats, including AA, AAA lithium batteries, and coin batteries, such as those found in watches or computer motherboards with model numbers that begin with the characters "CR" (e.g., CR2025).



For more information on lithium-ion battery recycling, check out the following resources: EPA Resources: Lithium-ion Battery Recycling FAQs. Used Lithium-Ion Batteries. Frequent Questions on Lithium-ion Batteries. Universal Waste Webpage: Batteries section. Workshop on Lithium-Ion Batteries in the Waste Stream.



Lithium batteries are used in everything from watches to laptops, tablets and smartphones. However, when it comes to lithium battery disposal you'll need to follow special procedures: The components that make these batteries so helpful make them hazardous in traditional waste-disposal processes.



How to Recycle Batteries Responsibility Battery Recycling How to Recycle Batteries Where to Recycle Batteries Coin Lithium Battery Safety Parents and Caregivers Energizer's Commitment Preparedness Change Your Clock, Change Your Battery??? Top 5 Ways To Prepare For a Power Outage By some counts, Americans buy nearly 180 tons of batteries each year ??? a nationwide ???



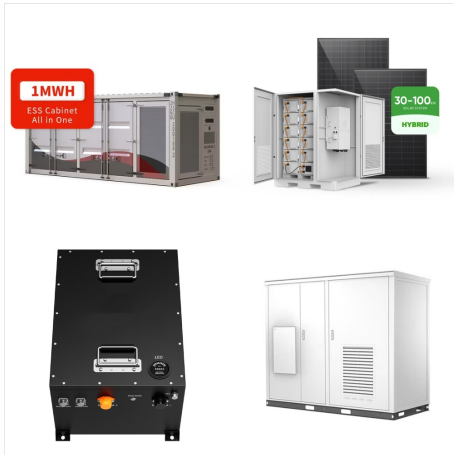
Do help Energizer drive awareness of the risks associated with ingesting 20-millimeter, coin lithium batteries when swallowed. Visit our Coin Lithium Battery Safety page or call Energizer Customer Support (1-800-383-7323) to learn more. IF YOU SUSPECT YOUR CHILD HAS SWALLOWED A COIN LITHIUM BATTERY, TAKE HIM OR HER TO THE EMERGENCY ???



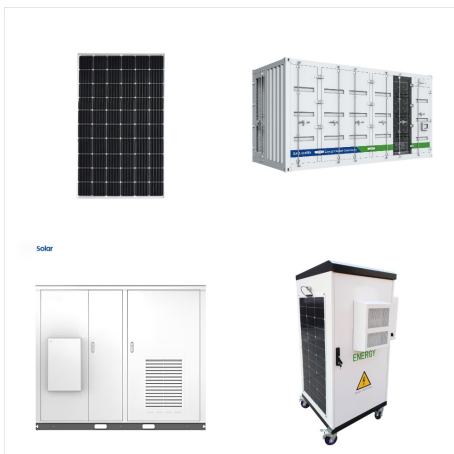
You must take batteries to an authorized recycling center, a universal waste handler or a household hazardous waste disposal facility. When you know how to dispose of batteries, you can help the environment. Dropoff sites typically accept rechargeable batteries for recycling. For single-use batteries, you can get a mail-order recycling kit.



These batteries include lithium ion and lead batteries. Failure to follow these laws results in a fine. Call the household hazardous waste collection program if your battery contains hazardous material. Batteries such as lithium single-use batteries and lithium-ion batteries can cause fires.



Human Toxicity from Damage and Deterioration.
Before lithium-ion batteries even reach landfills, they already pose a toxic threat. When damaged, these rechargeable batteries can release fine particles???known as PM10 and ???



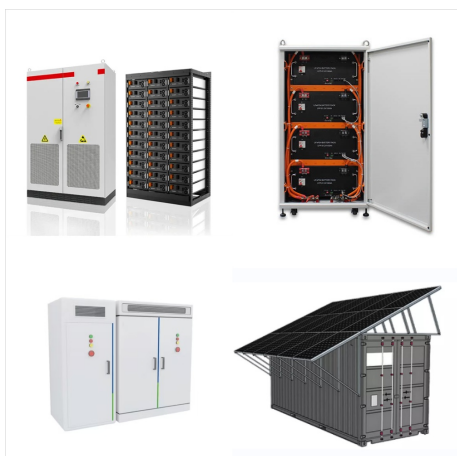
Basically, all batteries apart from those designed for vehicles or industrial use can be dropped off for recycling this way. (The terminals of lithium batteries should ideally be taped up first



Where to Recycle Batteries Responsibility Battery Recycling How to Recycle Batteries Where to Recycle Batteries Coin Lithium Battery Safety Parents and Caregivers Energizer's Commitment Preparedness Change Your Clock, Change Your Battery??? Top 5 Ways To Prepare For a Power Outage Each state has its own recycling regulations, so it's worth finding out what your state [???



These facilities usually have designated bins for lithium batteries or will guide you to the proper disposal unit. Retail Stores: Some electronics stores offer take-back programs where you can bring your used CR2032 batteries for recycling. Specific Disposal Protocols for CR2032 Batteries. Lithium batteries, such as CR2032, should not be



Dispose of used batteries immediately. (2) Risk of injury due to fire, explosion or leakage. Do not disassemble, charge, crush or expose to fire or high temperatures. Important: Coin Lithium batteries are not interchangeable. Both the diameter and thickness can vary based on the cell designation. While some device battery compartments may be



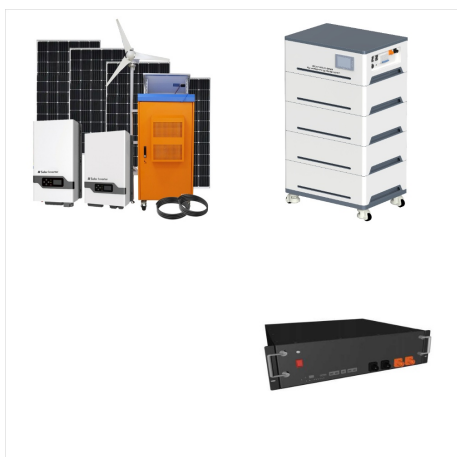
Improper disposal of lithium batteries by consumers can contribute to environmental damage and public safety risks, highlighting the importance of adhering to proper disposal practices. Encouraging Proper Disposal. Promoting the correct disposal of lithium batteries is essential to mitigating these risks. Consumers and businesses alike are



This guide provides essential information on responsibly disposing of various types of batteries, from single-use to rechargeable, and offers actionable tips on recycling options. Following the ???



Dry-Cell Batteries ??? Dry-cell batteries include alkaline and carbon zinc (9-volt, D, C, AA, AAA), mercuric-oxide (button, some cylindrical and rectangular), silver-oxide and zinc-air (button), and lithium (9-volt, C, AA, coin, button, ???)



I've got two 2450 lithium coin batteries and have no idea how to dispose of them. My government website doesn't have any local information about drop off locations (or I don't live locally to any). And any hardware chain stores only accept rechargeable batteries or ???



batteries, for disposal of household-generated batteries. These include alkaline, lithium, lithium ion, metal hydride, nickel-cadmium, silver oxide and zinc-air. Batteries come in many sizes and can be rechargeable or single use. The Department of Natural Resources recommends recycling many battery types by taking them to a drop-off site.



Non-rechargeable and alkaline household batteries may be discarded with regular trash. However, it is illegal to put rechargeable batteries in your trash or recycling. This includes batteries from laptops, cell phones, and digital cameras. If you need to get rid of rechargeable batteries, you can: Drop them off at a Special Waste Disposal site



Abbreviation (LI-ION, Li-ion, LiPo (lithium polymer); Button/coin Cell (LIR####) It MAY Just Have Battery Seal or Other Mark Recycling Lithium-Based Batteries Four Important Lessons 1. A Spent Battery Isn't. Used lithium batteries can often maintain 80%+ of their original charge. 2. Don't Remove Non-Removable Batteries. Lithium polymer



These batteries include lithium ion and lead batteries. Failure to follow these laws results in a fine. Call the household hazardous waste collection program if your battery contains hazardous material. Batteries such as lithium single-use batteries and lithium-ion batteries can cause fires.



When it's time to get rid of the batteries, start by checking local ordinances. A few cities and towns will recycle any batteries for you if you just leave them in a plastic bag on top of your trashcan. About half of states have laws mandating specific disposal methods for consumers.



Lithium batteries can be damaged in garbage trucks and cause fires at waste processing centres. Damaged coin/button batteries, 9V, and sealed lead acid batteries should have the terminals taped and should be individually bagged ???



DO NOT put button-cell or coin batteries in the trash or recycling. These batteries are commonly used in watches, hearing aids, car keyless entry remotes, toys, calculators, and musical greeting cards. They contain silver and mercury and pose a swallowing risk for children. Lithium-Ion Battery Safety (FDNY) Used Household Batteries (EPA)



Lithium batteries can be damaged in garbage trucks and cause fires at waste processing centres. Damaged coin/button batteries, 9V, and sealed lead acid batteries should have the terminals taped and should be individually bagged for safe drop off. Recycle Your Batteries, Canada! customerservice@call2recycle.ca. Battery safety resources



By the time your CR2032 battery loses its charge, the highly reactive lithium inside of it has been transformed into a non-reactive metal compound. Please enter to read the entire article. How To Properly Dispose Of CR2032 Batteries. Thankfully, CR2032 batteries don't contain any toxic metals or reactive acids. By the time your CR2032