

Does iPad use lithium ion batteries?

iPad is a portable device designed to be used all day on a single charge from a built-in battery.*iPad uses lithium-ion battery technology to support this capability. Unless otherwise stated, all existing and future iPad models using lithium-ion batteries are designed to meet international safety certification standards.

What kind of battery does a tablet have?

Tablets like the iPad or the Samsung Galaxy Tab also contain a lithium-ion battery. At the end of their lives, these tablets need to be disposed of properly. In addition to the battery, these tablets contain metals, glass, and plastic components that can also be recycled.

Can I charge my iPad if the battery is not fully charged?

You can charge your iPad every night even if the battery isn't fully depleted. iPad automatically stops charging when the battery is fully charged, so it's safe to keep your iPad connected to a charger overnight. Charging resumes automatically if your battery level drops below 95 percent. When possible, unplug your iPad after it has fully charged.

Are iPad batteries safe?

All iPad batteries are tested, certified, and in compliance with the standards listed below. These standards meet the safety and testing criteria set forth in the FAA Advisory Circular AC 120-76D regarding the airworthiness and use of portable electronic flight bags. * Battery life varies by use and configuration.

Why is lithium ion a good battery?

Why Lithium-ion? Compared with traditional battery technology, lithium-ion batteries charge faster, last longer, and have a higher power density for more battery life in a lighter package. When you know a little about how they work, they can work that much better for you. It charges fast for convenience and slow for longevity.

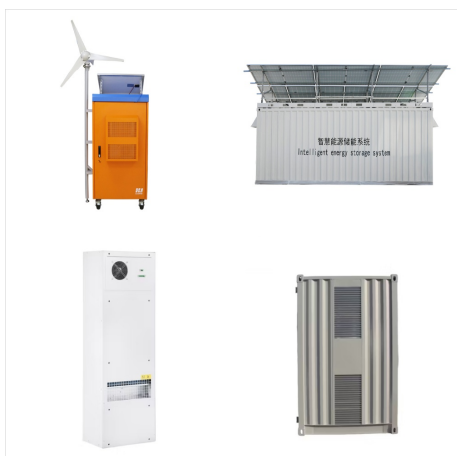
How do Apple lithium ion batteries work?

Apple lithium-ion batteries work in charge cycles. You complete one charge cycle when you've used (discharged) an amount that represents 100% of your battery's capacity *-- but not necessarily all from one

DO IPADS CONTAIN LITHIUM BATTERIES



charge. For instance, you might use 75% of your battery's capacity one day, then recharge it fully overnight.



Do hearing aid batteries contain mercury?
Rechargeable hearing aid batteries do not contain mercury. Disposable batteries once did contain trace amounts of heavy metal mercury, however, almost all batteries sold today do not contain mercury. Each zinc-air battery packages that do not contain it will be labeled as "mercury-free" or Hg 0%.



iPad is a portable device designed to be used all day on a single charge from a built-in battery.* iPad uses lithium-ion battery technology to support this capability. Unless otherwise stated, all existing and future iPad models using lithium-ion batteries are designed to meet international safety certification standards. All iPad batteries are

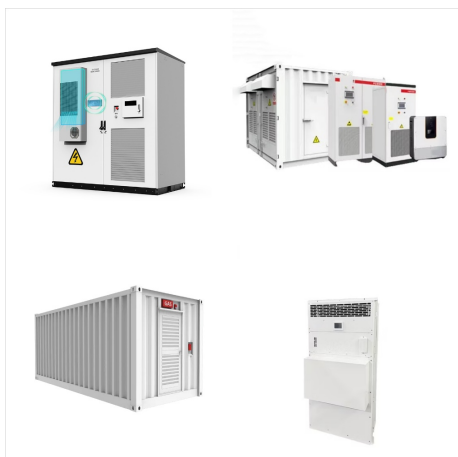


Other Electronic Devices Containing Lithium Batteries. Sometimes, it's not apparent that a device contains lithium batteries. Essentially, if your device requires charging to be used, or is used cordlessly, there's a good chance that it's powered by a lithium battery. Examples of other electronics that may contain lithium batteries include:

DO IPADS CONTAIN LITHIUM BATTERIES



Lithium-ion batteries are modern miracles: they provide enough power for an iPad to run for 6+ hours, they charge quickly and are lightweight. There's also a free replacement guarantee for life a?? if the bag is used to contain a fire, a new bag will be a?|



USPS Packaging Instruction 9D Lithium Metal and Lithium-ion Cells and Batteries a?? Domestic. Except according to 349.21, lithium metal (nonrechargeable) cells and batteries and lithium-ion (rechargeable) cells and batteries are mailable in limited quantities domestically via air or surface transportation when they are installed in or packed with the equipment they are intended to a?|

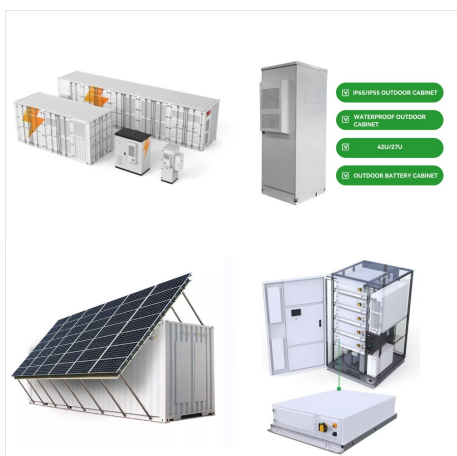


While most lithium batteries are safe, some have overheated and caught fire. Once ignited, they can cause any nearby batteries to overheat and catch fire. These fires can be difficult to put out and produce toxic and irritating fumes. Identify the presence of lithium batteries inside of a package. When shipping lithium batteries, it is not always

DO IPADS CONTAIN LITHIUM BATTERIES



iPad has an internal, lithium-ion rechargeable battery. You can charge your battery whenever you want. Your Apple lithium-ion battery uses fast charging to quickly reach 80% of its capacity, then switches to slower trickle charging. The amount of time it takes to reach that first 80% will vary depending on your settings.



How Do I Know If My Battery is Lithium? There are a few ways to tell if your battery is lithium. One way is to look at the voltage. Lithium batteries typically have a voltage of 3.6 volts or higher. Another way to tell is by looking at the chemistry. Lithium batteries will usually have "Li" somewhere in the name or on the label.



How long does the iPad's battery life last? Like most consumer electronics, the iPad uses lithium-ion polymer batteries. It is a lightweight rechargeable battery with a flexible casing. It can be made into almost any shape you want and is somewhat safer than lithium-ion batteries.

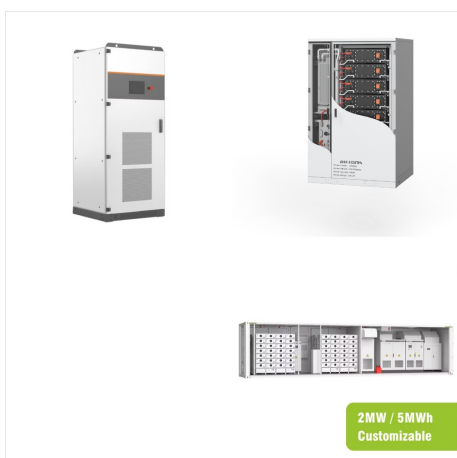
DO IPADS CONTAIN LITHIUM BATTERIES



If you are mailing packages that contain hazardous materials (HAZMAT), you must separate HAZMAT packages from all other packages and present them in a container marked "HAZMAT." Lithium Batteries in Electronic Devices . If you're mailing pre-owned, damaged, or defective electronic devices containing or packaged with lithium batteries, you



Lithium-ion batteries don't contain mercury but lithium metal, cobalt oxide, and cathode materials that can be toxic to humans when exposed or ingested. If a battery is punctured or damaged, it will release its cells' chemical contents, which could cause serious health problems, a?|



There are currently six types of lithium batteries eligible for shipment, in varying domestic or international quantities, via USPS: Lithium-ion (rechargeable) battery, UN3480; Lithium metal battery, UN3090; Lithium-ion (rechargeable) battery contained in equipment, UN3481; Lithium-ion (rechargeable) battery packed with equipment, UN3481

DO IPADS CONTAIN LITHIUM BATTERIES



Lithium-ion batteries don't contain mercury but lithium metal, cobalt oxide, and cathode materials that can be toxic to humans when exposed or ingested. If a battery is punctured or damaged, it will release its cells' chemical contents, which could cause serious health problems, including but not limited to reproductive harm and cancer.



When portable electronic devices powered by lithium batteries are in checked baggage, they must be completely powered off and protected to prevent unintentional activation or damage. In electronic devices capable of generating extreme heat the heating elements must be mitigated by removal of the heating element, battery, or other components.



The U.S. Postal Service has announced new final rules, effective immediately, that significantly impact the shipping of lithium batteries and other hazardous materials by mail.. USPS cites "a consistent and alarming rise in incidents involving mailed packages of both lithium batteries and other hazmat, including a?| unlabeled or improperly labeled air-ineligible hazmat a?|

DO IPADS CONTAIN LITHIUM BATTERIES



Lithium-ion batteries can provide that, so they are used to power cell phones, iPads, computers, e-bikes, scooters, toys, and even cars. Lithium-ion batteries have taken the world by storm in recent years.



Check if the product contains a lithium-ion battery by looking for labels such as lithium ion, li-ion, li-po and lithium-polymer. Follow the manufacturer's instructions. How to use the product safely Handling and storing a lithium-ion battery product What to do. Store lithium-ion batteries and products in cool, dry places and out of direct



Lithium batteries (UN3090, UN3091, UN3480, UN3481) Regulatory Changes Please note that regulations applicable to lithium batteries are dynamic. UPS will update this guidance document as quickly as possible. Lithium battery shippers must stay abreast of changes. UN38.3 test summary documents must be made available upon request

DO IPADS CONTAIN LITHIUM BATTERIES



Charge the iPad battery. iPad has an internal, lithium-ion rechargeable battery. Lithium-ion technology currently provides the best performance for your device. Compared with traditional battery technology, lithium-ion batteries are lighter, charge faster, last longer, and have a higher power density for more battery life.



All iPhones contain lithium batteries. The design and capacities of iPhone batteries vary depending on the model. Do iPads Have Lithium Batteries? Just like iPhones, all iPads are powered by lithium batteries. The battery of an iPad can also be difficult to remove, and an Apple technician usually does this. After reaching a full charge, an



Lithium batteriesa??which power personal electronics like cell phones, tablets, electric toothbrushes, digital cameras, hoverboards, and beyonda??typically need to be turned off when put into checked baggage because damaged lithium batteries pose a threat of overheating or catching fire, according to research carried out by the FAA.

DO IPADS CONTAIN LITHIUM BATTERIES



However, these batteries didn't last as long as they should. Their life deteriorates with every use. NiCd batteries also contain toxic cadmium, making them environmentally unfriendly. So, we think that these aren't such a good option. they do. Lithium-ion batteries revolutionized how we use portable devices like laptops with their high



iPad is a portable device designed to be used all day on a single charge from a built-in battery.* iPad uses lithium-ion battery technology to support this capability. Unless otherwise stated, all existing and future iPad models using lithium-ion batteries are designed to meet international safety certification standards. All iPad batteries are



Lithium-ion batteries contain materials that can be harmful to the environment and require special handling. Monitor for Re-ignition: Even after extinguishing the fire, continue to monitor the area for any signs of re-ignition. Lithium-ion batteries can sometimes reignite due to residual heat. Ensure that the area remains cool and safe.

DO IPADS CONTAIN LITHIUM BATTERIES



25 grams of equivalent lithium content are equal to about 300 watt-hours. You can arrive at the number of watt-hours your battery provides if you know how many milliamp hours and volts a?|



. Understanding the features, usage, and maintenance of the lithium batteries in your iPad can help you optimize battery life and ensure a long-lasting and reliable power source for your device. Remember to follow Apple's guidelines for battery management and care, and enjoy the convenience and portability that iPads provide without worrying



Instead, lithium-ion batteries typically contain a lithium-metal oxide, such as lithium-cobalt oxide (LiCoO₂). This supplies the lithium-ions. Lithium-metal oxides are used in the cathode and lithium-carbon compounds are used in the anode. These materials are used because they allow for intercalation. Intercalation means that the molecules are