



While it is true that they do not work if there is snow on top of them, the snow usually slides off or melts pretty quickly. Living somewhere with snowy weather is not a reason to not install solar - all you might need to do is clean off your panels with a broom and/or add snow guards to your solar panel installation.



Solar panels work on rainy, cloudy, or snowy days, but their performance will be reduced. Monitor your system to see how performance is affected. Get a quote; Portal login; How much power do solar panels produce on a cloudy day. Solar panels can produce about 10-25% of their normal output on a cloudy day. Obviously, the cloudier it is, the



Do Solar Panels Work on Rainy and Snowy Days?
Like cloudy days, your solar panels can still work and generate some electricity during rainy or snowy conditions, although efficiency may drop due to less available sunlight. Interestingly, light snow can actually improve performance by reflecting sunlight onto the panels, but heavy snowfall that

DO SOLAR PANELS WORK ON SNOWY DAYS



See Related: How to Clean Your Solar Panels. Can solar panels work on cold, snowy days? Though we know that solar panels can be impacted by winter days when there is less sunlight, solar panels can still work well in winter ??? as long as the panels are not covered in snow and can absorb the sunlight particles that come through.

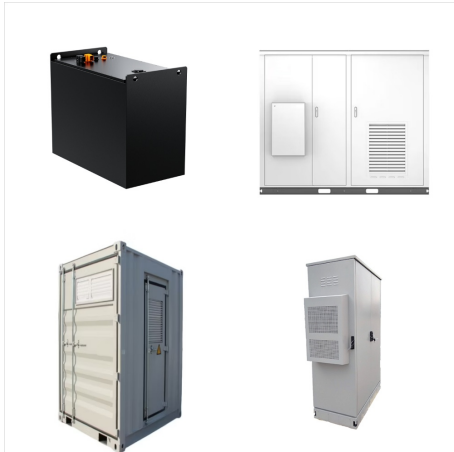


But how do these solar panels perform under cloudy, rainy, snowy days, or at night? Let's dive into the science behind solar power generation and find out. 1) Solar Panels on Cloudy Days: Solar panels generate electricity by converting sunlight into energy through photovoltaic (PV) cells.



Moreover, in colder weather, particularly on clear days, snow can operate as a reflective surface, directing additional sunlight to your solar panels. This phenomenon, known as the "albedo effect", functions as a mirror and increases the cold-temperature electricity generation capacity of the panels.

DO SOLAR PANELS WORK ON SNOWY DAYS



You can even get between 10% and 25% of your panel's total capacity on a rainy or cloudy day. How do solar panels work on cloudy or rainy days? Sunrays can still pierce through the clouds and produce electricity. Modern photovoltaic solar panels are designed in such a way that they absorb all types of light, whether reflected or weak.



Do solar panels work when covered in snow? Solar panels can still work when covered in snow, but their efficiency decreases. Light can pass through thin snow, allowing the panels to produce some electricity. However, heavy snow can block sunlight completely until it melts or slides off.



Do Solar Panels Work in the Snow? Snow can be a major consideration for many solar customers in colder climates, both for homeowners looking into solar and for current customers. The good news is the snow has a minimal effect on the production of the system and is fully accounted for in the design phase. Snowy winter days usually come with

DO SOLAR PANELS WORK ON SNOWY DAYS



But do solar panels work on cloudy days? The answer is yes???although your solar panel system will be most efficient in direct sunlight, it can still generate electricity in gloomy weather. Snow: A light dusting of snow has minimal impact on solar panel efficiency. The wind can easily blow off light snow, and light may still filter through



With winter comes colder temperatures, shorter days, and the belief that both factors negatively impact solar panel efficiency. This is a misconception. Even in the dreary winter months, photovoltaic (PV) panels still ???



Are you considering investing in solar power and are wondering do solar panels work in the winter? The short answer is yes! Solar panels can still generate electricity in the winter. You can then use the stored energy during periods of low production, such as on cloudy or snowy days, ensuring a more consistent power supply.

DO SOLAR PANELS WORK ON SNOWY DAYS



Do solar panels work on snowy days? Solar panels can still generate electricity on days with snowfall. As long as there is visible daylight, there is solar radiation that can be harnessed into clean electricity. Similar to rainy days, cloud coverage is ultimately more important than precipitation. Thick, dense clouds mean even less energy



But do solar panels work at night, or will you need to draw from the power grid for your nighttime energy consumption? The short answer is no; solar panels have photovoltaic cells that trap the sun's rays with their receptors. Even on cloudy or snowy days, your panels will still absorb sunlight and generate energy. Once the energy is



The short answer is yes, solar panels do indeed work in the winter, and surprisingly, they can be quite efficient during these colder months. Do Solar Panels Work in the Cold? To understand why solar panels work in the winter, ???

DO SOLAR PANELS WORK ON SNOWY DAYS



But shorter cloudy days, snow and ice accumulation and the sun lower in the sky all reduce the amount of sun available. If solar panels work better in the cold, they have less sun to work with.

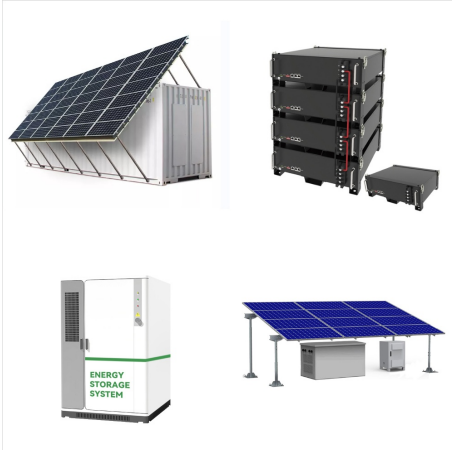


Wait for the sunshine which should naturally melt snow/ice off solar panels. Do solar panels work on cloudy days? Yes, solar panels work on cloudy days by capturing diffused sunlight. Though efficiency is reduced, they can still generate 10-25% of their normal power output, depending on the cloud coverage and panel efficiency.



Keep Solar Panels Clean. Regularly remove snow, ice, and debris from solar panels to help them keep working properly. Here are some safe and effective methods for cleaning solar panels in winter: Use a soft brush or broom to sweep away loose snow gently. For stubborn ice, carefully apply warm (not hot) water to melt it away.

DO SOLAR PANELS WORK ON SNOWY DAYS



Snow, Ice, and Solar Panels: No problems at all. It's common to wonder how snow and ice affect solar panels' performance. While a snow-covered panel may not produce electricity during that time, it can still generate power when the snow melts away or slides off. Do solar panels work on cloudy days in the UK? Yes, solar panels can still



Do solar panels work in hail and snow? Solar panels continue to work in hail and snow, just at a reduced efficiency rate. This is similar to how they operate under cloud cover, as the photons from the sun will still penetrate hail and ???



With winter comes colder temperatures, shorter days, and the belief that both factors negatively impact solar panel efficiency. This is a misconception. Even in the dreary winter months, photovoltaic (PV) panels still harvest the sun's light and convert it into electricity. Do Solar Panels Work in Snow? Solar panels produce electricity by

DO SOLAR PANELS WORK ON SNOWY DAYS



Solar panels have gained immense popularity recently for their environmental benefits and cost-saving advantages. However, for homeowners in snowy regions like Middlebury, CT, one pressing question often arises: Do solar panels still work in snow? We'll explore insights from trusted solar companies to give you an idea. Table of Contents Introduction Key ???



Do Solar Panels Work on Snowy Days? Typically, when there's snow there's also cloud coverage. While this cloud coverage does impede solar energy production, snow itself doesn't pose much of an issue unless it builds ???



Do solar panels work on snowy days? If there is cloud coverage and diminished sunlight, then solar panels will not work at their maximum efficiency level on snowy days. With that said, snow on solar panels is usually not a problem, particularly because a dusting of snow is easily whisked away by the wind.

DO SOLAR PANELS WORK ON SNOWY DAYS

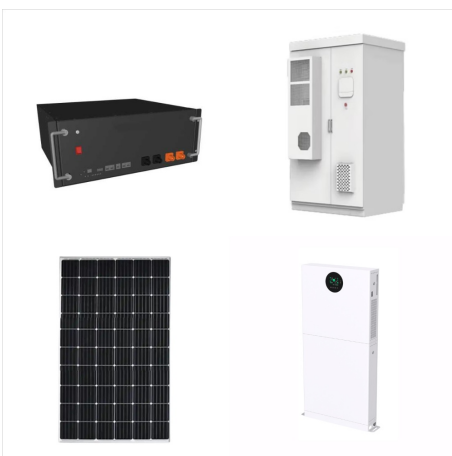


The answer is yes, solar panels can generate electricity in snowy conditions, as long as the snow does not completely cover the surface.

Homeowners should be aware of the possibility of reduced efficiency and ???



How Snow Can Reduce the Efficiency of Solar Panels. Your solar array depends on light hitting the PV cells in each panel. If you have a rooftop system of rigid solar panels, leaving snow and ice covering the panel for too long prevents them from receiving as much sunlight and capturing as much of the sun's energy.. An inch or two of snowfall might not have an ???



Do solar panels still work in snowy weather? Solar panels still work in snowy weather, but the amount of electricity they can generate will depend on how much snow has fallen. Heavy snowfall ??? a rarity in the UK ??? can stop solar panels from working altogether because the thick layer of snow will prevent light from reaching the solar cells.

DO SOLAR PANELS WORK ON SNOWY DAYS



Solar panels typically generate less power in winter due to shorter daylight hours and a lower sun angle. On average, they may produce 25-60% less energy compared to summer, but they still work efficiently, especially on ???