

Can you carry lithium batteries on a plane?

If you need assistance with screening, you may ask for a Passenger Support Specialist or a Supervisory TSA Officer. Devices containing lithium metal or lithium ion batteries should be carried in carry-on baggage. Most other consumer electronic devices containing batteries are allowed in carry-on and checked baggage.

Are batteries allowed in checked baggage?

Spare lithium metal and lithium ion/polymer batteries are prohibited in checked baggage--this includes external battery packs. Electronic cigarettes and vaporizers are also prohibited in checked baggage. "Checked baggage" includes bags checked at the gate or planeside. Q3. How do I determine the watt hours (Wh) rating of a battery? A3.

Can I bring a battery to a TSA checkpoint?

The final decision rests with the TSA officer on whether an item is allowed through the checkpoint. Spare (uninstalled) lithium ion and lithium metal batteries, including power banks and cell phone battery charging cases, must be carried in carry-on baggage only.

Can you bring a battery on a plane?

Requirements vary based on the type of device and size of battery. Spare (uninstalled) lithium metal batteries and lithium ion batteries, portable rechargers, electronic cigarettes and vaping devices are prohibited in checked baggage. They must be carried with the passenger in carry-on baggage.

What batteries are allowed in carry-on luggage?

Batteries allowed in carry-on baggage include: Dry cell rechargeable batteries such as Nickel Metal Hydride (NiMH) and Nickel Cadmium (NiCad). For rechargeable lithium ion batteries; see next paragraph. Lithium ion batteries (a.k.a.: rechargeable lithium, lithium polymer, LIPO, secondary lithium).

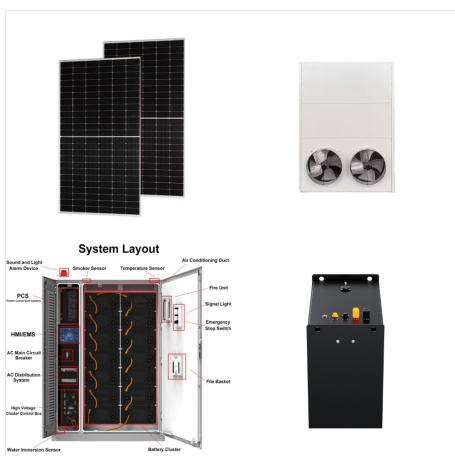
Can I bring a battery?

Aside from large lithium batteries and non-spillable wet batteries, there are no quantity limits for bringing batteries as long as they are for personal use. So if you are bringing batteries for further sale or distribution (e.g., vendor samples), those are prohibited. Battery covers can prevent short-circuiting.

DO YOU CHECK OR CARRY ON LITHIUM BATTERIES



This covers typical dry cell batteries, lithium metal, and lithium ion batteries for consumer electronics (AA, AAA, C, D, button cell, camera batteries, laptop batteries, etc.) Spare (uninstalled) lithium metal and lithium ion batteries are always prohibited in checked baggage and must be placed in carry-on. When a carry-on bag is checked at



The first thing you need to do is check with your airline regarding their specific policies on battery transportation. Any spare lithium-ion batteries must be placed in carry-on luggage and cannot exceed 100 Wh. Batteries between 100-160 Wh require approval from the airline, while those over 160 Wh are not allowed at all.

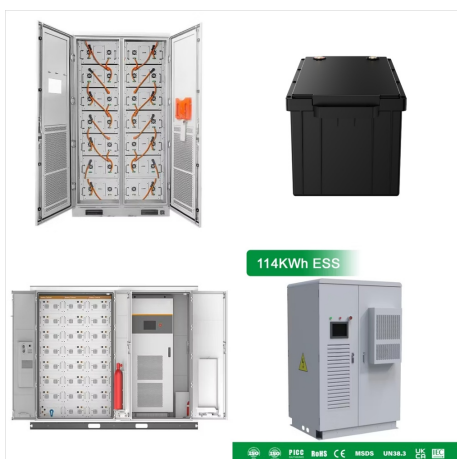


Remember, you can only carry two spare lithium-ion batteries exceeding 100Wh onboard an aircraft. Individual Packaging Prevents Short-Circuiting. Another important guideline is about packaging. Each lithium-ion cell or battery must be packed individually to prevent short-circuiting. Use sturdy plastic bags or original retail packaging to keep

DO YOU CHECK OR CARRY ON LITHIUM BATTERIES



Each spare battery is individually protected in accordance with our lithium battery acceptance policy; Batteries are in carry-on bag only; For a lithium metal battery, lithium content cannot be more than 2 grams per battery; For lithium-ion batteries, a maximum of 2, not exceeding 160 Wh each, are allowed in carry-on bag with airline approval



You must carry the removed lithium battery in your cabin baggage and it will be treated in accordance with existing spare lithium battery requirements. Cabin baggage. On check in, our staff will ask you if you have read the lithium batteries regulations. It is a criminal offence to make a false statement in response to this question



Am I allowed to carry batteries in Hand Luggage?
Batteries are generally permitted in hand luggage. Alkaline batteries (dry alkaline cells; commercially available AA, AAA, C, D, 9-volt, button cells, etc.) are unproblematic in hand luggage.. It gets more complicated with lithium-ion batteries/rechargeable batteries the way, this also includes the popular powerbanks!

DO YOU CHECK OR CARRY ON LITHIUM BATTERIES



Lithium batteries with 100 watt hours or less in a device. Carry On Bags: Yes. Checked Bags: Yes (Special Instructions) Spare (uninstalled) lithium ion and lithium metal batteries, including ???

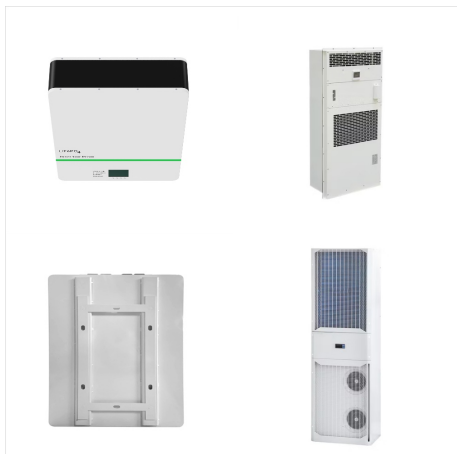


Lithium metal. Over 2 g - 8 g lithium metal content. Medical Devices only. Not permitted to, from and within the USA. In equipment Spares. Only two (2) spare batteries. Must be declared at check-in
Lithium metal over < 8 g lithium metal content Not Permitted. Electric Wheelchair/Mobility Device Exemptions Apply. Non-spillable batteries. 12v or



Battery-operated boards and other self-balancing devices (e.g. hoverboards) Include but limited to: electric boards, hoverboards, gliders, electric unicycles, intelligent scooters, or similar devices of any type which use lithium or lithium ion batteries (e.g. rechargeable, LifePo, NMC, etc.) will not be accepted in either checked or carry-on baggage.

DO YOU CHECK OR CARRY ON LITHIUM BATTERIES



Loose rechargeable lithium batteries must be rated under 160 Watt hours (Wh). You can carry a total of 20 batteries. Up to two of them can be rated 100-160Wh, or 2-8g lithium content (batteries for medical devices only). You must carry any loose batteries in your carry-on bag. They are not allowed in your checked-in baggage.



Yes, you can bring most batteries for personal use in your carry-on and through a TSA security checkpoint. Most batteries allowed in your carry-on can also be brought in your checked baggage although you are not allowed to ???



If you have a ton of batteries, carry it in its own case. I use an SKB case as a carry-on.. Since the limitation is 100 watt-hours, the Indi Pro 98 rechargeable batteries work great. I use mine to

DO YOU CHECK OR CARRY ON LITHIUM BATTERIES



Do not carry damaged or recalled batteries on the plane. Examples of lithium batteries. Small lithium batteries and cells (<100Wh) - mobile phones, cameras, watches, portable music players, most original laptop computer batteries; Medium lithium batteries and cells (100-160Wh) - extended life batteries for laptop computers and batteries used by



Also, quoting the actual regulation: "(ii) For a lithium ion battery, the Watt-hour rating must not exceed 100 Wh. With the approval of the operator, portable electronic devices may contain lithium ion batteries exceeding 100 Wh, but not exceeding 160 Wh and no more than two individually protected lithium ion batteries each exceeding 100 Wh, but not exceeding 160 Wh, ???



Spare (uninstalled) lithium ion and lithium metal batteries, including power banks and cell phone battery charging cases, must be carried in carry-on baggage only. With airline approval, passengers may also carry up to two spare larger lithium ion batteries (101-160 Wh) or lithium metal batteries (2-8 grams).

DO YOU CHECK OR CARRY ON LITHIUM BATTERIES



Spare (uninstalled) lithium ion and lithium metal batteries, including power banks and cell phone battery charging cases, must be carried in carry-on baggage only. Lithium metal (non-rechargeable) batteries are limited to 2 grams of lithium per battery. Lithium ion (rechargeable) batteries are limited to a rating of 100 watt hours (Wh) per battery.

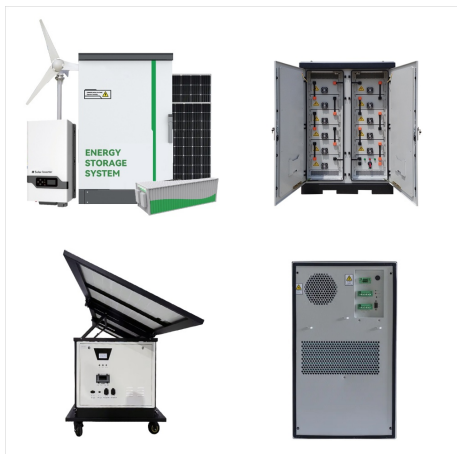


A Comprehensive Guide on the restrictions for flying with Lithium Ion batteries. This article explores the boundaries of traveling with lithium-ion batteries, including what items you're permitted to bring onboard, what's allowable in checked luggage, essentials to keep in your carry-on, and what to avoid packing. We'll also demystify the TSA and FAA standards regarding the ???

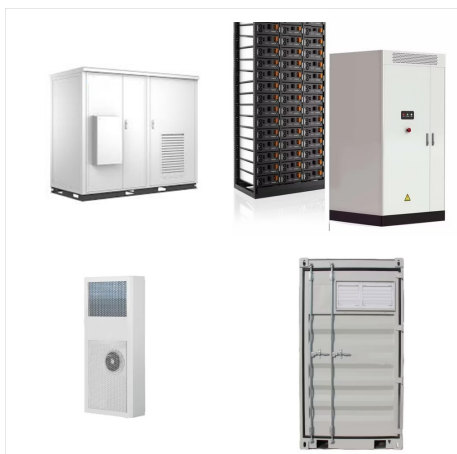


Lithium metal (non-rechargeable) batteries are limited to 2 grams of lithium per battery. Lithium ion (rechargeable) batteries are limited to a rating of 100 watt hours (Wh) per battery. With airline approval, passengers may also carry up to two spare ???

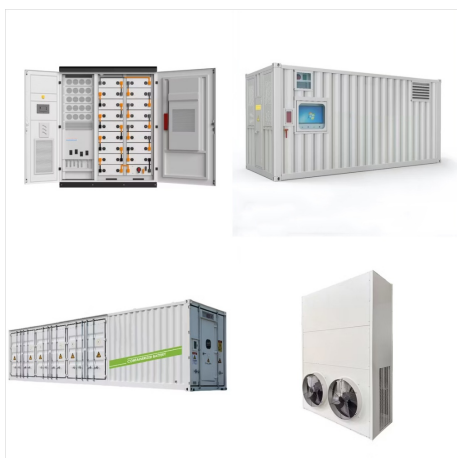
DO YOU CHECK OR CARRY ON LITHIUM BATTERIES



Really no issue whatsoever. The ban on lithium batteries in checked luggage has been created to mitigate the risk of uncontrollable fires in the hold, that was increasing due to the fact that large lithium batteries are everywhere now, including in stuff that people might pack in their luggage: huge power banks, small scooters and self-balancing devices, electric bikes and (for a time) ???



No more than 15 lithium battery powered electronic devices (including power tools), for personal use only permitted per passenger. Note: Watt hours (Wh) are determined by multiplying the voltage (V) by the amp hours (Ah). ie. $12V \times 5Ah = 60Wh$. Important. The US and UK have implemented new travel requirements that restrict the carriage of electronic devices larger than ???



You may not check gasoline or any other flammable fuel to power the device. LITHIUM BATTERIES. Lithium cells or batteries power many consumer electronic devices and medical devices, like watches, laptop batteries, calculators, cell phones, hearing aids and much more. You can bring lithium-battery powered devices as carry-on items or in checked

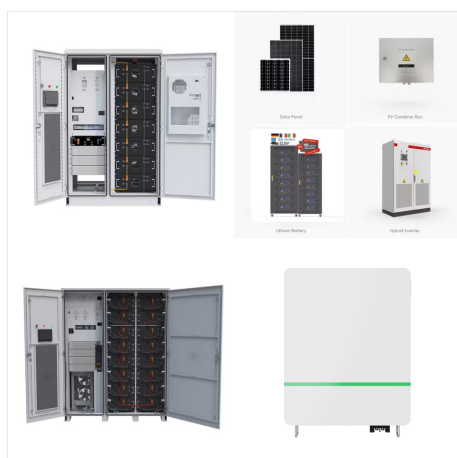
DO YOU CHECK OR CARRY ON LITHIUM BATTERIES



Small lithium battery-powered vehicles are not accepted in either checked baggage or carry-on baggage due to safety concerns associated to the lithium batteries that power them. Prohibited vehicles include: hoverboards, AirBoards, electric skateboards, airwheels, mini-Segways, balance wheels, battery-assisted bikes and electric scooters.



Here are the key guidelines set by the TSA and FAA: Personal Electronic Devices: Devices containing lithium-ion batteries (like phones, laptops, tablets, and cameras) should ideally be carried in



Removed batteries must be carried in accordance with the provision for spare batteries. Checked Baggage. Baggage equipped with lithium batteries are only allowed in checked baggage when containing lithium metal batteries with a lithium content not exceeding 0.3 grams, or lithium ion batteries with a Watt-hour rating not exceeding 2.7 Wh.

DO YOU CHECK OR CARRY ON LITHIUM BATTERIES



Lithium ion batteries (a.k.a.: rechargeable lithium, lithium polymer, LIPO, secondary lithium). If you must carry a battery-powered device in any baggage, please package it so it won't accidentally turn on during the flight. Check out the Department of Transportation's spare battery tips page for more information on safely packing



If you have a drone in your checked-in baggage you'll be asked to either secure the Lithium batteries within the drone or remove the batteries and carry them in your cabin baggage. This regulation still applies even if you're connecting to our flights from an airline that has accepted drones as cabin baggage.



You can bring a portable speaker with a battery capacity of up to 100 Wh inside the cabin, and you can even bring a speaker with a bigger battery if you get permission from the airline. It's recommended to pack any devices with lithium-ion batteries inside cabin luggage because the devices could get damaged during transport in the hold.