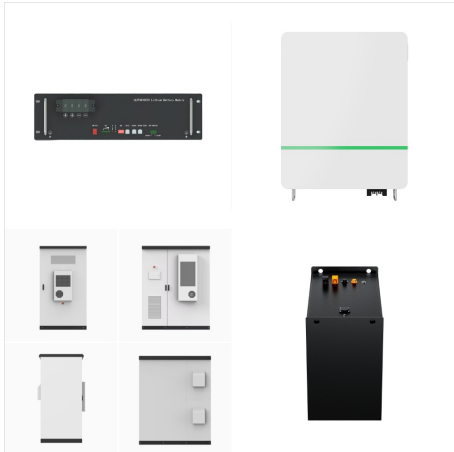




# DOBLE F6150 POWER SYSTEM SIMULATOR



The Doble F6150e is a versatile protective relay tester for testing relays and schemes. This power system simulator performs the simplest through the most complex tests. Meeting all your protective relay testing needs, the F6150e is available in different configurations.



The Doble F6150 Relay Testing System is the answer. It is the sole device that is flexible and provides high power together with well-developed software that carries out simulation tests on relays and protection schemes.



The Doble F6150 power system simulator uses state-of-the-art digital signal processing and power amplifiers to deliver a high-power, lightweight simulator for all protection testing applications. It's the only instrument that can test the full range of protection schemes, electromechanical, numerical and combinations of all types.

# DOBLE F6150 POWER SYSTEM SIMULATOR



F6150SV Power System Simulator (R) The Ultimate Tool for Protection Scheme Testing The F6150SV is your versatile, all-in-one solution for testing protection relays and schemes. Designed to meet your needs, the F6150SV is capable of performing the ???



The Doble F6150 Power System Simulator is the only instrument with the high power, flexibility, and sophisticated software to run full simulation tests on your relays and protection schemes. It provides everything you need in a single, field-rugged, portable box. It can test everything from a single, high-burden electromechanical earth/ground



Versatile solution for protective relay testing IEC 61850-based protection devices and schemes. This power system simulator performs the simplest through the most complex tests. The F6150sv has the highest output ???

# DOBLE F6150 POWER SYSTEM SIMULATOR



DOBLE F6150sv POWER SYSTEM SIMULATOR  
TECHNICAL SPECIFICATIONS VOLTAGE SOURCES (6 TOTAL) Source Configuration Power  
6-phase AC (L-N) 6 x 150 V @ 75 VA 3-phase AC (L-N) 3 x 300 V @ 150 VA 1-phase AC (LL-LN) 1 x 600 V @ 300 VA DC (LL-LN) 3 x 424 V @ 150 W  
Available Range 75 V, 150 V, 300 V LOW LEVEL SOURCES



The Doble F6150sv is your versatile solution for testing IEC 61850-based protection devices and schemes. This power system simulator performs the simplest through the most complex tests. The F6150sv has the highest output current of any simulator on the market - all within a single box. Meeting all your testing needs, the F6150sv is available



The Doble F6150sv is your versatile solution for testing IEC 61850-based protection devices and schemes. This power system simulator performs the simplest through the most complex tests. The F6150sv has the highest output current of any simulator on the market - all within a single box. Meeting all your testing needs, the F6150sv is available in three different models.



# DOBLE F6150 POWER SYSTEM SIMULATOR



The Basic Edition is limited to basic controls of F6150 Power System Simulators and includes: F6 Control Panel; F6080 Field Calibrator interface; State Simulator (256 states) for modeling and testing fault/reclosing schemes; Power System ???

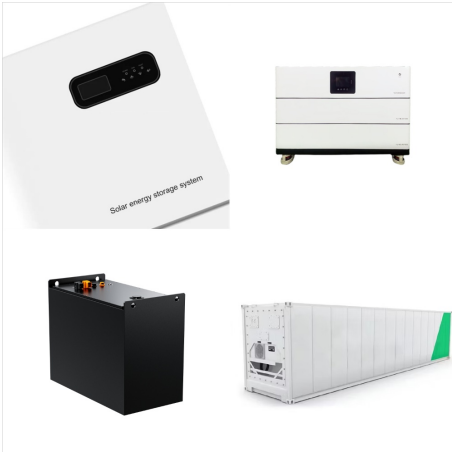


Find many great new & used options and get the best deals for Doble F6150 Power System Simulator 3 Phase Relay Test Set Calibrated at the best online prices at eBay! Free shipping for many products!



F6150 POWER SYSTEM SIMULATOR Doble's F6150 Power System Simulators are your versatile solutions for testing IEC 61850-based protection devices and schemes. SOFTWARE: Your rental can include Protection Suite Pro software for an additional charge. CONTROLLER: Add a Doble Universal Controller (DUC), which comes pre-loaded with

# DOBLE F6150 POWER SYSTEM SIMULATOR



View and Download doble F6000 user manual online. Power System Simulators. F6000 power supply pdf manual download. Also for: F6150. Page 13 F6000 Power System Simulator Table 7.5 lists all the cables used with the F6150. If a system failure is traced to a particular cable, ensure that the cable is properly seated and connected before



The Doble F6150SV GSE (F6860) is a versatile power system simulator for testing IEC 61850-based systems at the process level and station level using both sampled values and GOOSE (Generic Object Oriented Substation Events) messages performing the simplest to the most complex tests. Doble F6150SV GSE Power System Simulator (F6860 IEC61850 GSE ???



## DOBLE F6150sv TECHNICAL SPECIFICATIONS

The F6150sv line of Power System Simulators is designed for simulation tests on relay and protection schemes. VOLTAGE SOURCES (6 TOTAL) Source Configuration Power 6-phase AC (L-N) 6 x 150 V @ 75 VA 3-phase AC (L-N) 3 x 300 V @ 150 VA 1-phase AC (LL-LN) 1 x 600 V @ 300 VA DC (LL-LN) 3 x ???

# DOBLE F6150 POWER SYSTEM SIMULATOR



Consult Doble Engineering Company's entire F6150SV Power System Simulator catalogue on DirectIndustry. Page: 1/4. Exhibit with us [Back](#) [POWER SYSTEM SIMULATOR](#) The Ultimate Tool for Protection Scheme Testing The F6150SV is your versatile, all-in-one solution for testing protection relays and schemes.



F6150e Power System Simulator The Ultimate Tool for Protection Scheme Testing The F6150e is your versatile, all-in-one solution for testing protection relays and schemes. Designed to meet your needs, the F6150e is capable of performing the most simple through the most complex tests and is available in three different models depending on your



F6Test supports the F6150SV power system simulator for testing IEC61850-based systems using process bus sampled values (per IEC61850 9-2 LE guidelines) and Doble Knowledge is Power Doble customers using Doble's protection test software are invited to participate in the International Protection Testing Users Group (PTUG),

# DOBLE F6150 POWER SYSTEM SIMULATOR



Using the F6300 High-Power Current Amplifier in combination with the Doble F6150 protective relay tester takes you to the next level of realistic power system simulation for protection scheme Doble testing. The F6150 is the only instrument that can test the full range of protection schemes, electromechanical, numerical and combinations of all



RENT DOBLE F6150E Three PHase Relay Test Set (Call for Availability) The Doble F6150e is your versatile solution for testing protection relays and schemes. This power system simulator performs the simplest through the most complex tests. Meeting all your testing needs, the F6150e is available in four of different models.



The Doble F6150e is your versatile solution for testing protection relays and schemes. This power system simulator performs the simplest through the most complex tests. Meeting all your testing needs, the F6150e is available in four of different models. Whether you need



# DOBLE F6150 POWER SYSTEM SIMULATOR



Download the latest Doble Engineering software product updates. MyDoble Resource Center. English. Fran?ais; Espa?ol; Search. HIGH POWER TEST SYSTEMS. AC Dielectric HIPOT Test Systems; AC Resonant Test Systems; Download the latest F-Series power system simulator user guides, protection software, firmware and drivers. Access .



DOBLE F6150e POWER SYSTEM SIMULATOR  
TECHNICAL SPECIFICATIONS VOLTAGE  
SOURCES (6 TOTAL) Source Configuration Power  
6-phase AC (L-N) 6 x 150 V @ 75 VA 3-phase AC  
(L-N) 3 x 300 V @ 150 VA 1-phase AC (LL-LN) 1 x  
600 V @ 300 VA DC (LL-LN) 3 x 424 V @ 150 W  
Available Range 75 V, 150 V, 300 V LOW LEVEL  
SOURCES



Whether you need to test an individual component or test an entire scheme, the Doble F6150 is the proven solution to assess protection system performance for analog testing of 1A and 5A protection devices. Evaluate your protection relays and schemes in their environment, using simulated power system conditions and events. Key Features: