

Do CPAP machines need batteries?

Continuous positive airway pressure (CPAP) machines are the most common treatment for sleep apnea. Virtually all CPAP machines use a power supply that plugs into an electrical outlet. For this reason, most CPAP machines do not require batteries. However, sometimes sleepers may need or want to power their CPAP machines by battery.

Do CPAP batteries work as ups?

Some CPAP batteries do not function as a UPS backup, and will require you to disconnect your machine from the wall outlet and switch it to battery power in the event of a power outage. Fortunately, for those worried about power outages, every battery on this list will function as a UPS except for the Zopec Voyage.

Are CPAP batteries compatible?

Some batteries are compatible with a range of CPAP machines, while others only work with a specific model. When shopping for a CPAP battery, be sure to double-check that the battery's manufacturer confirms that it's compatible with your model. CPAP machines can be damaged by trying to power them with a battery that isn't compatible.

Are lithium ion CPAP batteries safe?

Most lithium ion CPAP batteries are FAA-compliant, which means they are federally approved for air travel. Batteries aren't allowed in checked bags, so they must be stowed in your carry-on bag. Battery terminals need to be covered and stored safely away from other metal items.

What are integrated CPAP batteries?

Integrated CPAP batteries are built-in batteries intended to be used as back-up for standard CPAP machines in the event of a power outage. In contrast, travel CPAP batteries are external batteries designed specifically with travel in mind. Although integrated batteries are not frequently marketed for traveling, most could be used for travel, too.

What are portable CPAP batteries?

Portable CPAP batteries are primarily meant to power a range of travel CPAP machines, but they're also

DOES A CPAP MACHINE HAVE A LITHIUM BATTERY



compatible with certain standard CPAP machines. Travel batteries are convenient when camping or in places with limited electrical outlets. Many models are Federal Aviation Administration (FAA)-approved for air travel.



CPAP machines have become a common item to see on airplanes. But what many people do not know is what to expect when traveling with one. which allows passengers to bring more than two spare lithium-ion batteries. Spare CPAP batteries must be placed in carry-on bags and cannot exceed 300-watt hours. That means that if you have a CPAP battery

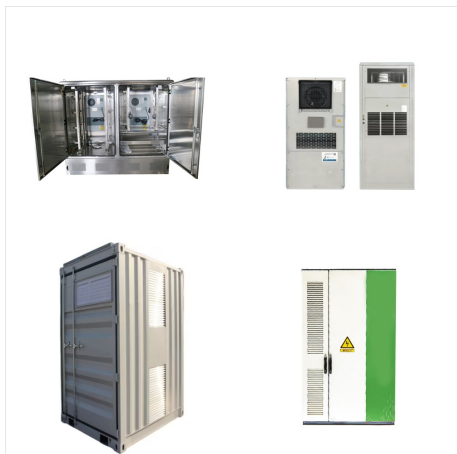


EXP Pro Lithium Iron Phosphate Battery Bank.
Regular price From \$399.00 Regular price \$579.99
Sale price From \$399.00 Unit price / per . Type. Add to Cart The plus icon represents addition or expansion. If You'd Like To Use The Medistrom Pilot-24 Lite With A Dreamstation Go Or Luna CPAP Machine, You'll Need The Battery Adapter Kit.



EXP Pro Lithium Iron Phosphate Battery Bank.
Regular price From \$399.00 Regular price \$579.99
Sale price From \$399.00 Unit price / per . Type Add to Cart The plus icon represents addition or expansion. Yes, the NiteOwl can be used as a dedicated backup battery for your CPAP machine. Plug the battery into an AC outlet as though you were

DOES A CPAP MACHINE HAVE A LITHIUM BATTERY



Which battery to get for CPAP machine is a subject that we all have stumble with. First let's look at 8 hours of use at 8 pressure setting and 6 Humidity setting. Average AH need for this use for 1 night = 20 to 25 AH @ 13v Lithium batteries give us around 80% usable capacity. So, I went with a 100 AH @ 13v lithium battery.



How long will a CPAP battery last? The longevity of a CPAP battery largely depends on various factors, including the battery's capacity, the settings of your CPAP machine, and whether additional features like a humidifier or heated hose are in use. Typically, a CPAP battery can last anywhere from one night to several nights on a single charge.



Your CPAP machine's make and model must be added to your booking at least two business days prior to departure. Please contact our Service Center to add this to your booking. If your CPAP machine is battery powered, please note that spare/loose lithium ion batteries must be in cabin baggage (under 100 Wh and up to 160 Wh.)

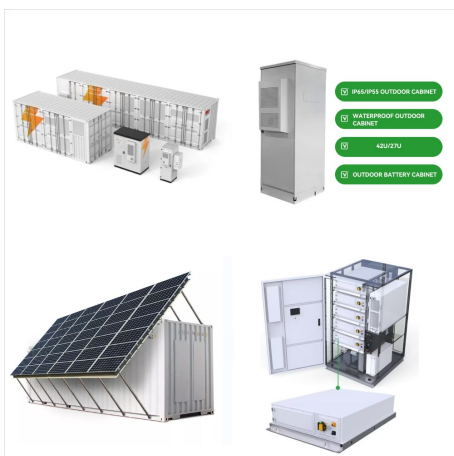
DOES A CPAP MACHINE HAVE A LITHIUM BATTERY



Shop CPAP batteries for top CPAP machine brands at the lowest prices. Stay well-rested on the go with portable CPAP battery packs and solar chargers. EXP48 Pro Lithium Iron Phosphate Battery Shop now Regular price From \$



Learn How to Power your Battery Powered CPAP Machine with Solar Energy in 2024. Essential Tips for Sustainable and Efficient CPAP Use. Just be aware that lead acid batteries are far less efficient, and less reliable, than lithium batteries. Equip your CPAP machines with MANLY Battery's professional-grade, long-lasting lithium batteries



The Human Design Medical Z1 and Z2 PowerShell with Extended Life Battery is the extended-life battery for Z1 and Z2 travel CPAP machines are compact, lightweight, and extremely convenient. The Z1 Z2 auto CPAP battery has double the capacity than the original, ensuring prolonged CPAP therapy with no difficulties. You can use it as both replacement and backup ???

DOES A CPAP MACHINE HAVE A LITHIUM BATTERY



Find the right battery for CPAP machines in our blog by The CPAP Shop. Discover which battery backup for CPAP machine offer the best performance and reliability. Lithium ion batteries are lighter, smaller, and have options like USB ports and dashboards that indicate battery life. Additionally, all major brands of CPAP machines work with



While many portable CPAP batteries are designed with smaller dimensions, the Transcend Portable Batteries from Somnetics have an especially thin profile. If you own a Transcend CPAP machine and need a portable power source that's easy to stow, this model is an attractive option.



The most common CPAP battery types are lithium-ion, lead acid, and lithium-iron-phosphate. Each type has its own unique advantages and drawbacks in terms of performance, size, weight, cost effectiveness, and lifecycle. Traveling and camping with your CPAP machine doesn't have to be a hassle! With the right accessories and knowledge, you

DOES A CPAP MACHINE HAVE A LITHIUM BATTERY



This is to ensure comfort to the user while traveling with the CPAP machine. The carry bag features zippers, handle, and sling strap. AirCurve 10 ASV BiPAP Machine; In the box: (1) Lithium-ion battery (1) Carry bag (1) DC cable (1) Power supply unit adaptor . Specifications. Battery Pack Bag Dimensions: 11.25 in L x 7.5 in W x 4.5 in H.



The EXP96PRO LiFePO4 Battery Bank is a lightweight, portable battery system compatible with most CPAP machines and other personal electronic devices. Works with Resmed Airsense 11, Resmed Airsense 10, Resmed Airsense 9, Resmed AirMini, Dreamstation 1, Dreamstation 2, Resvent iBreeze, Respironics System One, Breas Z1, Breas Z2ery & humidity/heated hose is ???



The EXP48 Pro Lithium Ion Battery Bank is compatible with a wide range of CPAP machines, including the ResMed AirSense 11, ResMed AirMini, ResMed AirSense 10, Philips DreamStation I and II, Respironics System One 60, Resvent iBreeze, Breas Z1/Z2, and more.

DOES A CPAP MACHINE HAVE A LITHIUM BATTERY



The lithium-ion battery used in travel CPAP machines is rechargeable. With that said, the battery cannot be recharged unless you have a power source. While many travel CPAP machines have a built-in humidifier, others don't. This could be a deal-breaker if you are prone to nosebleeds or persistent dry mouth from standard CPAP machines.



Not all portable CPAP batteries work with every CPAP machine, and an incompatible battery can actually damage your machine. First, check to see if your CPAP machine brand makes a compatible battery. If it doesn't, manufacturers and retailers of CPAP travel batteries usually list compatible machines on their websites. Battery Lifespan



The EXP96PRO LiFePO4 Battery Bank is a lightweight, portable battery system compatible with most CPAP machines and other personal electronic devices. Works with Resmed Airsense 11, Resmed Airsense 10, Resmed Airsense 9, ???

DOES A CPAP MACHINE HAVE A LITHIUM BATTERY



For example, a standard lithium-ion battery pack rated at 24,000 mAh could potentially support a CPAP machine for 14 to 16 hours on a pressure setting of 10 cm H₂O. In contrast, a smaller battery with a capacity of around 10,000 mAh might only last 6 to 8 hours under similar conditions. Do cpap machines have a backup battery; Do cpap



3. CPAP Battery Backups. Speaking of solutions that extend beyond power outages, you can run a CPAP machine on a portable battery while traveling. CPAP battery packs are special, lithium-ion batteries that can power your CPAP device overnight (up to 8 hours) via USB ports. Extended-life batteries might even last two nights!

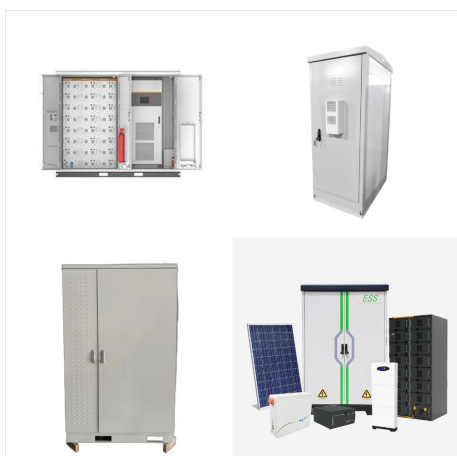


Thus theoretically speaking if you purchase a 90Ah battery and your CPAP machine consumes 1Ah, you will get around 90 hours of use from your battery. This is one of the easiest ways to approximate the amount of power which you will get. However do understand that the above method is not scientific, since variance in the machine and electrical

DOES A CPAP MACHINE HAVE A LITHIUM BATTERY



Fortunately, advancements in portable power solutions have made it easier than ever to power your CPAP machine while camping. In this article, we will explore the benefits of the EASYLONGER ES960 CPAP Battery Pack and guide you through the process of powering your CPAP machine while camping, ensuring a restful night's sleep in the great outdoors.



The PowerShell unit can be plugged into an electrical outlet to recharge the battery. The CPAP machine must be inserted in the PowerShell in standby mode during the recharging process. It takes about 12 hours to charge a fully depleted battery. The battery's expected lifespan is 300 cycles.

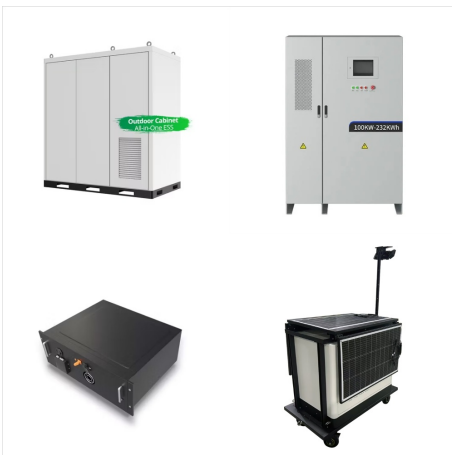


Chris discusses all of the items needed to connect your CPAP machine to a CPAP battery. Here are some examples: Stand Alone Battery; Deep Cycle Marine Battery (best) Car Battery; Lithium CPAP BatteryDC Battery adapter; Shielded DC cord for your specific CPAP machine; Cord is usually around 70 inches longInverter (Older Models only)

DOES A CPAP MACHINE HAVE A LITHIUM BATTERY



ResMed: Susie, lots of people ask us why they need a CPAP battery. Susie: Well not everyone does necessarily. First and foremost, we encourage everyone to use CPAP whenever they sleep. (RPS II), comes with a unit adapter that plugs into the battery itself and your CPAP machine. It plugs into any Air10???, S9??? or Stellar??? ventilator



The EXP96 Pro is a lithium-iron-phosphate battery that can handle more extreme temperatures of up to 132° F compared to the 104° F limit of standard lithium-ion batteries. It also boasts a life cycle of 5,000 recharges compared to the average 500-charge lifespan of lithium-ion batteries. Portable CPAP Machine Compatible CPAP Battery for



The Portable Outlet makes original lithium-ion batteries that can be used with any type of CPAP, APAP, or BiPAP machine which does not need other adaptors or accessories. The rechargeable battery of the Portable Outlet has two USB ports with which the user can charge any other additional device if needed.

DOES A CPAP MACHINE HAVE A LITHIUM BATTERY



Continuous positive airway pressure (CPAP) machines are the leading treatment for obstructive sleep apnea (OSA). Standard CPAP machines are intended to be plugged into an electrical outlet, though some CPAP users also purchase a battery to power their machine.. CPAP users can rely on a CPAP battery when electricity is unavailable, such as while camping or ???