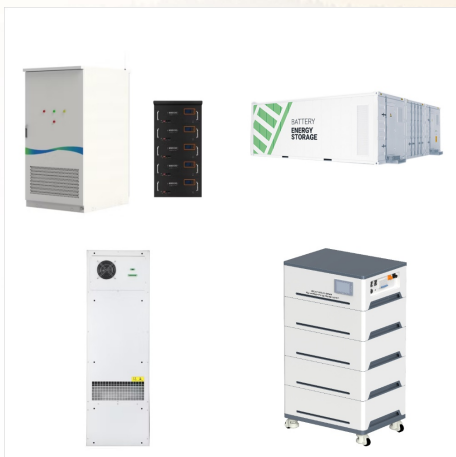




AC power is provided to a security system through a plug-in transformer. You must run a wire between the transformer and the alarm panel to transmit power. This is a big step in setting up a system. An alarm system will also have a backup battery to provide power during electrical outages.. AC power represents the primary power source for an alarm system.



Alarm System Power Cut or Internet Loss: How Does it Work? Safety is a basic need, and every other person in the United Kingdom chooses to install a home alarm. But do you know what happens if there is a power cut or if the internet goes down? What happens to my alarm system if there is a power cut? There are many types of alarms on the



To learn how to silence the beeps until the power loss restores please find your panel below: How to Silence Trouble Beeps by Panel SmartHub. Through the inTouch App: 1. Select the menu tab. "Low System Battery" Alert Once power is restored, your system's battery will begin to recharge itself. During this time, you may see a "Low

DOES M6BALARM SYSTEM WORK IF I LOSE POWER



Most systems (depending upon the number of hardwired devices connected to the system's main power supply) have enough battery backup power for short periods of power loss, anywhere from 4-12 hours. The system backup battery should be replaced every five years or more frequently depending on the number of power outages and the length in hours



Does an intruder alarm still work during a power cut? Most alarm systems are fitted with backup batteries. These are specifically intended to keep a security system up and running during a power cut. The battery backup is designed to kick in automatically as mains power fails, so you won't have to worry about switching it over yourself.

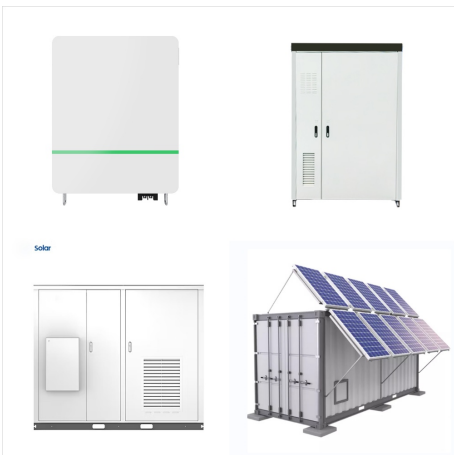


Be sure to test your system regularly to make sure it communicates properly with the 24-hour ADT Customer Monitoring Center. Prior to system or device testing, make sure to pause monitoring by placing your system in Test Mode. MyADT users can do this by logging into MyADT and selecting My Alarm, then click System Management and then select Place System on Test.

DOES M6BALARM SYSTEM WORK IF I LOSE POWER



Home security systems like ADT are designed to help homeowners and renters feel safe and protected against dangers of the outside world. When you lose power for one reason or another it is important to reset the system to ensure your ADT system works continuously. First check your panel to see if there are any alerts then locate your ADT security reset code. Read ???



AC power is the standard form of electricity that comes from an outlet. These backups are usually made up of rechargeable batteries and slowly store energy while the system has power. When your home loses power, the battery backup will automatically activate and power the system for as long as possible. 3 Reasons For Power Loss To A Home



Do Security Systems Work When Power Is Out. Generally, the security cameras will stop working when the power is out, whether it is for recording, motion detecting, or sending push. Another thing that's worth mentioning is that, if you lose power, the security system can't send data out, since the network is unavailable.

DOES M6BALARM SYSTEM WORK IF I LOSE POWER



The YoLink Power Fail Alarm is a smart power monitoring sensor, that monitors 120VAC, USB power other AC voltages. With 24/7 heartbeat supervision, the Power Fail Alarm will notify you of the loss of power at the connected outlet, via phone app push notification, email, SMS, paired or automated siren or other output device (relays, etc.) as we as via SpeakerHub ???



Control panel outage, power outage to the house, loss of power to plug, transformer for the system is dead. Check the plug that the system transformer (a little 3???x3??? cube) is plugged into. It could be "dead" due to lack of power to the house, a tripped circuit breaker or a "popped" GFI plug (usually located in the basement).



This way, it can be activated immediately upon the loss of AC power. This may occur because of a power cut or because the transformer was accidentally unplugged. If AC power is lost, the panel will indicate that fact with an AC loss status. In the event of a power outage, the system will continue to operate until the battery runs out of juice.

DOES M6BALARM SYSTEM WORK IF I LOSE POWER



Will Your Wireless Security System Work Without Wi-Fi? Science is amazing and radio waves are neat, but let's cut to the chase: Will your home security system work without Wi-Fi? The short answer is: Probably, but not necessarily. Most wireless home security systems on the market run on Wi-Fi with a cellular backup option.



Basically, it is a battery backup that can give your device power for up to 15 minutes or so and can cost anywhere from \$50 to \$250. Businesses may invest in heavier-use UPS units that can power computers for much longer. For your home use, a UPS can keep you from losing your work or forcing a hard shutdown due to a sudden power outage.



To identify whether the unit is working when there's been a loss of power, look for a blinking dot. When the power comes back on, a digital alarm will show a 0 again, meaning the carbon monoxide detector is running off your home's electrical system. Do Plugged in CO Alarms Work When There's a Loss of Power?

DOES M6BALARM SYSTEM WORK IF I LOSE POWER



Vivint Smart Home Security generally costs more compared to DIY security brands, but its high-end equipment paired with advanced smart home features makes Vivint the best wireless security system available???complete with pro installation and 24/7 monitoring.. Below, we've answered frequently asked questions about Vivint to help you decide if it's right for you.



Once the backup power runs out, the system will power down completely, and the screen will go blank. Most backup batteries can keep a system running for about a day. To clear an AC power failure trouble, a user must restore the plug-in power for their system. If the electricity is out, the user will need to either wait for the power to come

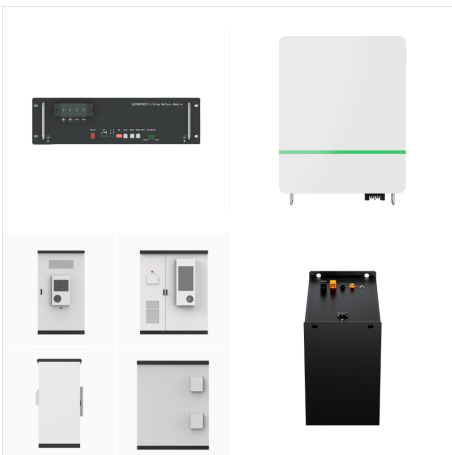


If your power goes out, your system will run on its back-up battery for approximately 4-6 hours. When the power returns, your panel battery should recharge within 24-48 hours. If power is completely lost, the system should restore to its previous arming status once the power is back on. If your panel was armed prior to losing power, it should

DOES M6BALARM SYSTEM WORK IF I LOSE POWER



Power Failure Alarm with LED Indicator,80-110dB
Adjustable Freezer Alarm with 7Siren,Power Loss
Alarm with Voltage Test,Power Outage Alarm
Perfect for GFI/GFCI Trips,Refrigerator (1 Pack) 4.3
out of 5 stars 102



If I lose power, will my alarm system still work? Yes.
In a power loss, the back-up battery will activate and
will operate your alarm system for several hours. In
the event your system battery is or becomes low, a
low-battery signal will be sent to ADT's Customer
Monitoring Center. Your system will also show an
indication of the low battery



The fire alarm system needs to be able to operate
continuously during the life of a building, this
includes times in which primary power to the
building is lost. Secondary Power Supply. Fire alarm
systems are provided with a secondary source of
power in order to remain operational after loss of
primary power.

DOES M6BALARM SYSTEM WORK IF I LOSE POWER



When AC power is cut, the system automatically transfers to the battery backup, and continues to work at the same arming level as it was set to before the power outage, although other systems, like the keypad light, may be reduced to conserve power. When power is restored, the system goes back to using AC power and charges the battery again.



The panel will display an AC loss condition so that you are aware that AC power was lost. The system will remain running on backup power for as long as the battery is able to keep the system powered on. Most batteries can keep a system running for between four (4) and 24 hours.



Keep your Alarm Pro on and online during outages with backup options to keep your property safe when the power or internet goes out. Back. Ring Help. Help Resources. Ring Help Home. Wifi Help. Ring Home Plans. Ring App Help Power & Battery Help. All Categories will help the alarm system get the signal out, if you're enrolled in

DOES M6BALARM SYSTEM WORK IF I LOSE POWER



Yes, security systems work without power. This is only true with a backup battery. Once the plug-in transformer stops supplying power, the system switches to the backup battery. Active alarm monitoring requires power. Without power, the system shuts down. If the system is off, activated sensors won't be detected.



What features does your iSocket have. Power loss alarm is the main feature of this iSocket model. Another useful feature is that you can connect any home appliance to iSocket and start or stop it remotely from anywhere in the world. You can turn on a lamp remotely or reboot your router remotely, and so on.



What should I do with my Medical Alert system if I lose power? Home System: If you lose power, your Medical Alert system will work for a limited time off of a backup battery. If your in-home communicator relies on a landline connection to send a help signal, your in-home communicator will not function if your phone service goes down. When your

DOES M6BALARM SYSTEM WORK IF I LOSE POWER



The transformer will also supply some power to the backup battery to give it some reserve power. So most of the time, the backup battery will be sitting there in reserve. But when the power does goes out, the backup battery will be ready. The system will switch over to this reserve power supply and continue to run as if nothing happened