

Where is Dolphin Energy based?

It also has operations based in Doha, Qatar. Dolphin Energy's Dolphin Gas Project, involves the production and processing of natural gas from Qatar's North Field, and transportation of the gas by offshore pipeline to the United Arab Emirates and Oman. In July 2007, the company announced it began production of gas from Qatar's North Field.

Does Dolphin Energy Limited work from home?

In 1999, the government of Abu Dhabi established Dolphin Energy Limited to implement a unique strategic energy initiative that began production in 2007. In line with government directives, Dolphin Energy Limited has instructed its employees in the UAE to work from home until further notice.

Where does Dolphin Energy Gas come from?

Dolphin Energy's gas arrives at the heart of the company's UAE operations, the Taweelah Receiving Facilities in Abu Dhabi, UAE at a maximum rate of 2 billion standard cubic feet per day. From Taweelah, the gas is distributed by pipeline to our customers across the UAE and Oman.

When did Dolphin Energy start supplying gas to Oman?

Dolphin Energy entered the business of gas supply in January 2004 when the company commissioned the natural gas pipeline connecting Al Ain with the emirate of Fujairah (considered a separate project.). Gas from Oman was supplied for the purpose which meant that gas from one GCC nation flowed to another for the very first time.

How many sealines connect Dolphin Energy to Ras Laffan industrial city?

Two 36-inch sealines connect Dolphin Energy's two production platforms to the gas processing plant at Ras Laffan Industrial City. The sealines rest in relatively shallow water (30-40 meters) and transport up to 2.6 billion standard cubic feet per day of raw gas to the Ras Laffan plant.

What are Dolphin Energy's downstream activities?

Dolphin Energy's downstream activities focus on receiving, metering and distributing gas to customers in the UAE and Oman.



The waters around Guernsey's Bailiwick are rich in marine life, including numerous species of whales, dolphins and porpoises. While it has always been possible to see these animals there has been a notable increase in cetacean sightings over recent years, with bottlenose dolphins seeing a particularly large spike in appearances.



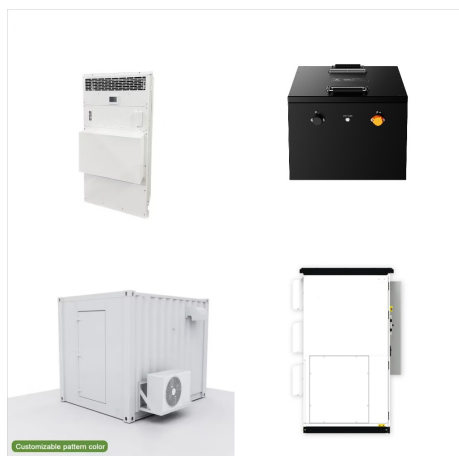
The Dolphin Gas Project is developed and operated by Dolphin Energy Limited, a company established in Abu Dhabi. It is the operator of all upstream, midstream, and downstream phases of the project. Dolphin Energy is 51% owned by Mubadala Investment Company, on behalf of the Government of Abu Dhabi, and 24.5% each owned by Total SE of France and Occidental Petroleum of the United States.



Dolphin Energy Ltd. Location: Ras Laffan/Qatar: Completion: 2006: Scope: EPC: Capacity: 2,600 MMSCFD: The Dolphin Gas Project of Dolphin Energy is a major regional strategic energy initiative. Since July 2007, the Company has been ???



Dolphin Energy's Profile, Revenue and Employees. Dolphin Energy is a UAE-based exploration company that develops oil and gas properties and extracts and processes crude oil and natural gas. Dolphin Energy's primary competitors include ENOC, DUSUP, Gulf Cryo and 15 more.



ASSIST consists of three main components: Subsea Equipment, Purpose Built Facilities and Support Agreements. Subsea Equipment: Our team, together with international contractors and partners, has developed, designed, built and tested the latest generation subsea repair technology. The result has been the development of a unique system featuring large bespoke ???



In the last year, Dolphin Energy achieved its target production rate of two billion cubic feet per day (bcfd), roughly equivalent to 350,000 barrels of oil ??? each day. "In the 1990s, I was begging people to buy gas from Qatar. ???



4,222 Followers, 28 Following, 303 Posts -
Dolfin Energy
(C) (@dolfinenergy) on
Instagram: "Official Account of Dolfin Energy
Limited -????? ??????????
(C) ?????????? ??????????(C)
?????-?????(C)?"



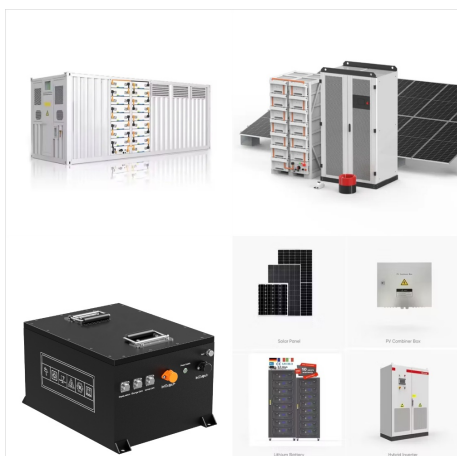
Dolfin Energy Limited today released details of its
14th sustainability report, covering the company's
operations and activities for 2022. The report was
developed using the GRI Standards: Core Option
and the IPIECA oil and gas industry guidance on
voluntary sustainability reporting. In addition, the
company's performance is aligned to the



Dolfin Energy Established in 2001 & Based in
Doha, Qatar. Industry Group : Renewable Energy
Sources Sub-Industry : Contact Person :
Established On : 01-Jan-2001 No of Employees:--
Dolfin Energy Limited: Dolfin Energy Tower,
West Bay, Area number 61, Block number 7, P.O.
Box: 22275, Doha, Qatar



We've been providing energy solutions to the Channel Islands for almost 200 years. Do you want to learn how you can save on your energy costs with Guernsey Energy? visit our website and view & buy our products or services.



Dolphin Energy Ltd. has successfully registered for Value Added Tax (VAT) with the Federal Tax Authority (FTA). Our VAT Registration Number is: 100012226500003. QATAR. Dolphin Energy Ltd. has successfully registered for Dhareeba Tax Portal with General Tax Authority (GTA). Our TIN Registration Number is: 5000436444



CHAIRMAN MESSAGE CEO MESSAGE. 01 02
HIGHLIGHTS ??? USD 9.9 Million total
environmental expenditure ??? New
Decarbonization Roadmap to beyond 2035
launched ??? 1,000,000 1.2% reduction in total
greenhouse gas (GHG) emissions ??? 1.7%
reduction in direct energy



Dolphin Energy Limited is committed to protecting its people, safeguarding the environment, and conducting its activities in a socially responsible manner within the communities in which it operates. We consider this commitment to Health, Safety, the Environment, and



Our Vision Dolphin Energy will be a leading and reliable supplier of clean energy in a socially responsible manner. Dolphin Energy will support the development of substantial long term new industries throughout the region, creating sustainable wealth, economic growth and employment opportunities for the citizens of the region, far into the future.



Dolphin Energy Limited is committed to protecting its people, safeguarding the environment, and conducting its activities in a socially responsible manner within the communities in which it operates. This commitment to Health, Safety, the Environment



Dolphin Energy Ltd. has successfully registered for Dhareeba Tax Portal with General Tax Authority (GTA). Our TIN Registration Number is: 5000436444. Workplace Health & Safety. HSE& S; Methods And Business Support; Environment, Sustainability and Climate Change; Asset Integrity & Process Safety



We are Dolphin Energy 10 HOW WE APPROACH SUSTAINABILITY 12 Approach 14 Strategic Priorities 15 Stakeholder Engagement 20 Commitments Overview 23 OPERATE WITH EXCELLENCE 25 Health and Safety 28 Reliable and Efficient Operations 31 Customer Satisfaction 32 Economic Performance 33 Security and Emergency Preparedness 35 ???



Dolphin Energy is a gas company of Abu Dhabi, United Arab Emirates. It was established in March 1999 by the Government of Abu Dhabi. As of today, Dolphin Energy is owned by Mubadala Investment Company, on behalf of the Government of Abu Dhabi, (51% of shares), Total S.A. (24.5%) and Occidental Petroleum (24.5%). It also has operations based in Doha, Qatar.



Dolphin Energy is a gas company of Abu Dhabi, United Arab Emirates was established in March 1999 by the Government of Abu Dhabi. As of today, Dolphin Energy is owned by Mubadala Investment Company, on behalf of the Government of Abu Dhabi, (51% of shares), Total S.A. (24.5%) and Occidental Petroleum (24.5%). [1] It also has operations based in Doha, Qatar.



Today, Dolphin Energy Limited is delivering 2 billion standard cubic feet of natural gas every single day, providing a source of clean energy for the Southern Gulf. The overall investment in constructing the entire Dolphin Gas Project has ???



Dolphin Energy for the supply of its nitrogen requirements in Ras Laffan. This long term supply agreement, using GASAL's extended pipeline network, provides both parties with an opportunity to reinforce their respective industrial footprint and develop operational synergies. It is also a demonstration of



Dolphin Energy entered the business of gas supply in January 2004 when the company commissioned the natural gas pipeline connecting Al Ain with the emirate of Fujairah (considered a separate project.[2]). Gas from Oman was supplied for the purpose which meant that gas from one GCC nation flowed to another for the very first time.



In the last year, Dolphin Energy achieved its target production rate of two billion cubic feet per day (bcfd), roughly equivalent to 350,000 barrels of oil ??? each day. "In the 1990s, I was begging people to buy gas from Qatar. Now my problem is how to say no!" said Qatar's deputy premier and minister of energy and industry, Abdullah al



Dolphin Energy Ltd. has successfully registered for Value Added Tax (VAT) with the Federal Tax Authority (FTA). Our VAT Registration Number is: 100012226500003. QATAR. Dolphin Energy Ltd. has successfully registered for Dhareeba Tax Portal with General Tax Authority (GTA). Our TIN Registration Number is: 5000436444



Dolphin Energy is a development company that was established in Abu Dhabi to implement the Dolphin Gas Project, and to undertake other important energy-related developments such as the Al Ain - Fujairah Gas Pipeline. This was completed in December 2003 and commissioned in January 2004, creating the first ever cross-border refined natural gas



Dolphin Energy Ltd. has successfully registered for Value Added Tax (VAT) with the Federal Tax Authority (FTA). Our VAT Registration Number is: 100012226500003. QATAR. Dolphin Energy Ltd. has successfully registered ???



Dolphin Energy Ltd. Location: Ras Laffan/Qatar: Completion: 2006: Scope: EPC: Capacity: 2,600 MMSCFD: The Dolphin Gas Project of Dolphin Energy is a major regional strategic energy initiative. Since July 2007, the Company has been producing, processing and supplying substantial quantities of natural gas from offshore Qatar to the United Arab



Group (ADSG) for Dolphin Energy's dedication and commitment to promoting sustainability management best practices. ??? Certificate of Appreciation from Aspire for Dolphin Energy's participation in the "Step into Health" Workplace Challenge and efforts in supporting staff to improve their physical activity levels.