

Why is my sprinkler system not working in all zones?

A common problem that occurs is one zone that won't work or a sprinkler system not working in all zones. If your sprinkler is not working in any zones, first check that the main valve for the system is open. Many things can cause a sprinkler system not working in all zones, including root obstructions, low water pressure, and solenoid malfunctions.

How do I fix all sprinkler zones turning on at the same time?

Once you've identified the problem, fixing all sprinkler zones turning on at the same time is relatively straightforward. Here's a step-by-step guide: Turn off the water supply to the system. Check and adjust the irrigation controller settings. Inspect the wiring for any damage or loose connections. Test the valves for proper function.

What to do if multiple sprinkler zones are not working?

Every single zone has multiple sprinklers to spray water. And when multiple sprinkler zones not working, here are the things you need to perform. First of all, take off the cover of the controller system and check if the wires are attached to the terminal. If there are any loose wires, you have to connect them instantly to make things work.

Why do sprinkler zones Turn on at the same time?

Valves control the flow of water to each zone. If a valve is stuck open, it can cause water to flow to all zones simultaneously. Valve malfunctions can occur due to debris buildup, physical damage, or age. Other potential causes of all sprinkler zones turning on at the same time include a broken mainline or a malfunctioning rain sensor.

Why is my irrigation zone not turning off?

Damaged or Dirty Zone Valve Each irrigation zone has a sprinkler valve that controls the distribution of water to the sprinkler heads in that zone. If one particular irrigation zone won't turn off, it might be because the valve is damaged or filled with debris, forcing it to stay open.

Can a faulty irrigation controller cause all zones to turn on?

DON T HAVE POWER IN ALL ZONES OF SPRINKLER SYSTEM



If the irrigation controller is programmed incorrectly, it can cause all zones to turn on at the same time. A power surge can cause the irrigation controller to malfunction and turn on all zones at the same time. A faulty irrigation controller can cause all zones to turn on at the same time, even if the programming is correct.



In certain areas, especially drought-prone and urban locations, you must run your sprinklers during off-hours (late at night or early in the morning) to avoid low water pressure. Double-check to make sure you didn't set your sprinkler to run twice, or that the settings weren't interrupted or changed by accident.



Plus, you'll avoid costly repairs and have a beautiful outdoor oasis all season long. Cacti don't belong in rainforests, and sprinklers don't belong in overcrowded zones! Neglecting to consider plant water requirements. Neglecting plant water requirements when designing a sprinkler system can have negative effects.

DON T HAVE POWER IN ALL ZONES OF SPRINKLER SYSTEM



If you notice water constantly leaking from one zone, or multiple, it could be a defective valve diaphragm, blockage inside the valve itself, or improper design/install that is affecting the valve ???



Most people don't give their sprinklers enough credit. people miss the signs that their sprinkler system is performing poorly, or in some cases, is flat-out broken. Keeping an eye on your sprinkler's different zones is key. Sprinkler valves control water flow to each zone with a diaphragm seal that is activated by the magnetic



Most sprinkler systems have different zones that cover various areas of your yard, such as the front lawn or backyard garden. Depending on the size of each zone, watering times can vary, so it's essential to select the zones that require watering manually. If you're having trouble with your irrigation system, don't worry ??? there are

DON T HAVE POWER IN ALL ZONES OF SPRINKLER SYSTEM



Check the Solenoid: If the zone is still not turning on after the wiring is confirmed to be correct, check to see if the solenoid of the malfunctioning valve is working or broken. 3 nine-volt batteries connected in series are needed in order to check the solenoid.



If your sprinkler is not working in any zones, first check that the main valve for the system is open. Many things can cause a sprinkler system not working in all zones, including root obstructions, low water pressure, and solenoid malfunctions.



No power at outlet. Reset the circuit breaker. No 24-volt power from the transformer to the timer. Replace the bad wiring or the transformer. Wire to valves is damaged. Repair any damaged wiring. Faulty transformer, timer, or rain sensor. Replace any faulty components as needed.

DON T HAVE POWER IN ALL ZONES OF SPRINKLER SYSTEM



Step 1: Check the Power Supply. Make sure the circuit breaker hasn't tripped, and the system is receiving power. Look for any signs of damage or wear on the power cord connecting to the control box. Step 2: Inspect the Sprinkler Controller.



No zone is turning on: If all the zones aren't turning on, ensure that your main valve is open. Electrical problems can cause a zone to fail. The problem might be from the wire, solenoid, valve, or timer. Very often, the problem usually arises when you ???



Sometimes the sprinkler system won't change zones, and here are the troubleshooting methods you can perform to solve the dilemma. Valve Issues. Each sprinkler zone comes with separate valves, and when it gets damaged, it may stop working. Therefore, you need to ???

DON T HAVE POWER IN ALL ZONES OF SPRINKLER SYSTEM



Fortunately, you can troubleshoot your lawn sprinkler problems easily. Here are seven common problems and how you can fix them: 1. Broken spray heads: If you notice that your sprinkler heads don't pop up or they pop up only to spray water everywhere, you may have a broken spray head.



Performing regular maintenance on your sprinkler and water irrigation system is the best way to fight low sprinkler pressure. Bar none! We also found an excellent monthly irrigation system checklist that we advise all gardeners to follow for maximum water efficiency. We found another helpful guide detailing winter preparation tips for sprinkler and irrigation systems.



Here are seven common problems and how you can fix them: 1. Broken spray heads: If you notice that your sprinkler heads don't pop up or they pop up only to spray water everywhere, you may have a broken spray head. Broken spray heads occur when lawn mowers or other vehicles drive over them. To fix a broken spray head, find the correct

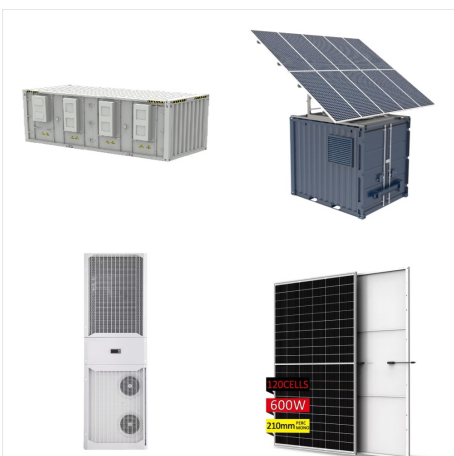
DON T HAVE POWER IN ALL ZONES OF SPRINKLER SYSTEM



1. Faulty Irrigation Controller Settings. The irrigation controller is the brain of the irrigation system. If it is set up incorrectly, it can cause all zones to turn on at the same time. This issue can occur if the programming is incorrect, there is a power surge, or the controller is faulty. 2. Wiring Issues.



1. Faulty Irrigation Controller Settings. The irrigation controller is the brain of the irrigation system. If it is set up incorrectly, it can cause all zones to turn on at the same time. This issue can occur if the programming is incorrect, ???



Hook up the air compressor and run air through each zone in your system until you've cleared all zones of water. Remember to turn off the timer to avoid additional water from entering the system. Turn off water to the system. If you don't have a sprinkler shut-off valve, you'll need to turn off the water at the main water shut-off valve

DON T HAVE POWER IN ALL ZONES OF SPRINKLER SYSTEM



If your irrigation zone isn't working properly, you should hire a sprinkler repair technician to resolve the issue right away. A faulty controller, damaged or dirty zone valve, defective solenoid, or a leaky pipe could be the ???



A sprinkler system consists of various zones, each with its own set of sprinkler heads, and it is important to ensure that each zone is feeding the right amount of water to the corresponding area. To determine how many zones you need for your sprinkler system, you will need to consider things like the size of your lawn, the type of plants, and

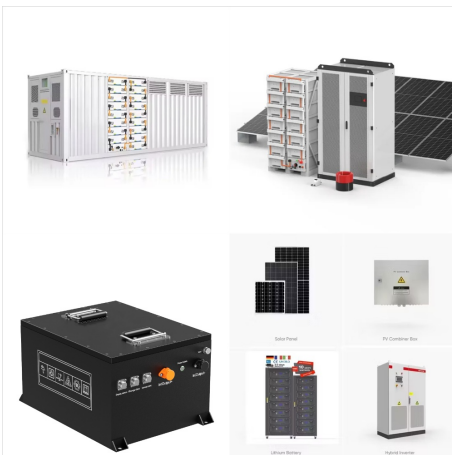


The first step in troubleshooting why a sprinkler zone won't shut off is turning off the system. You can do this in two different ways: switching to the "Off" button on the controller or turning off the shut-off valve. This will cancel any of the scheduled sprinkler times and kill the whole system so that you can inspect it safely.

DON T HAVE POWER IN ALL ZONES OF SPRINKLER SYSTEM



Let's review some of the most common causes of this sprinkler system problem. 1. Faulty Controller. Sprinkler controllers (also known as irrigation controllers) are the command center of your sprinkler system, turning water on and off in each zone based on the settings you've created. The controller connects to each zone through a dedicated

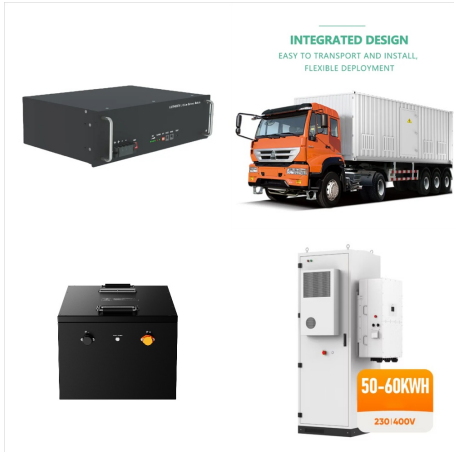


If you notice water constantly leaking from one zone, or multiple, it could be a defective valve diaphragm, blockage inside the valve itself, or improper design/install that is affecting the valve from fully sealing. Pump Buzzing. Pump buzzing is another fatal defect.



seminar "Troubleshooting an Irrigation System." Its purpose is to serve as a reference manual for troubleshooting problems. We hope that you keep this manual and refer to it when needed. Remember, you don't have to know the answer, you just need to ???

DON T HAVE POWER IN ALL ZONES OF SPRINKLER SYSTEM



Sometimes the problem is electrical, such as when a zone won't turn on, or no zones will run. There are three areas to check when investigating the electrical part of the system: the controller, the field wiring, and the electric ???



If your irrigation zone isn't working properly, you should hire a sprinkler repair technician to resolve the issue right away. A faulty controller, damaged or dirty zone valve, defective solenoid, or a leaky pipe could be the cause of the irrigation zone issue. Let's review some of the most common causes of this sprinkler system problem. 1.



When the other zones start, I first here the valve opening and then the water pressure sound. Zone 1, I hear nothing, and the sprinklers do not pop up. So what's the fix? I don't know anything about how all this works, but it appears all of the zone wiring are in a black conduit wire that goes into the ground, and I have no clue where it leads.

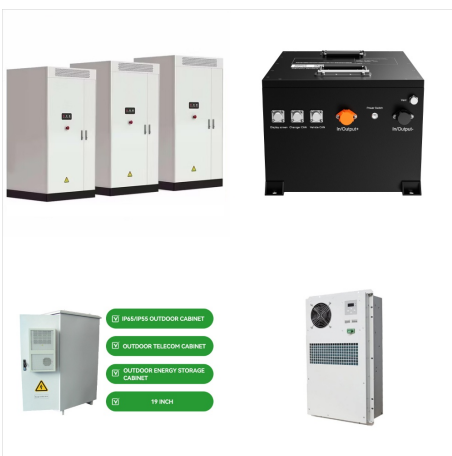
DON T HAVE POWER IN ALL ZONES OF SPRINKLER SYSTEM



Sometimes the problem is electrical, such as when a zone won't turn on, or no zones will run. There are three areas to check when investigating the electrical part of the system: the controller, the field wiring, and the electric solenoid valves.



Each zone wire is hooked to a separate zone slot on the sprinkler timer. If two zone wires are connected together at any point, they will both turn on at the same time. However, if a common wire is connected to a zone where the sprinkler timer is, it will fail. Check out this video to learn more about sprinkler wires. Names of Parts



Troubleshooting tips and guides to keep your Rain Bird sprinkler system running smoothly. Step by step how-to instructions on maintaining your sprinkler system. Zone Control; Filters, Valves & Pressure Regulators; Drippers, Emitters & MicroSprays Why Isn't My Drip Irrigation System Working Properly? We have easy-to-follow directions to

DON T HAVE POWER IN ALL ZONES OF SPRINKLER SYSTEM



Can I add more zones to my existing sprinkler system? Yes, additional zones can be added to an existing sprinkler system, assuming there is sufficient water pressure and capacity. What happens if I have too few zones ???