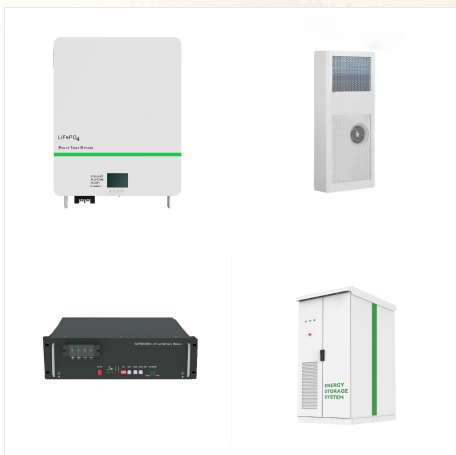


For transportation by cargo vessel, only lithium ion or lithium metal cells or batteries and equipment containing these cells or batteries with a Watt-hour rating or a lithium content, as applicable, conforming to ? 173.185(c)(1)(i) or (ii) may be transported under the



The lithium battery mark, as shown below, must be applied to packages as outlined in the Lithium Battery Shipping Regulations manual. Documentation. When shipping dangerous goods by air, the appropriate documentation must be provided by the shipper to describe the dangerous goods being offered. The Shipper's Declaration for Dangerous Goods

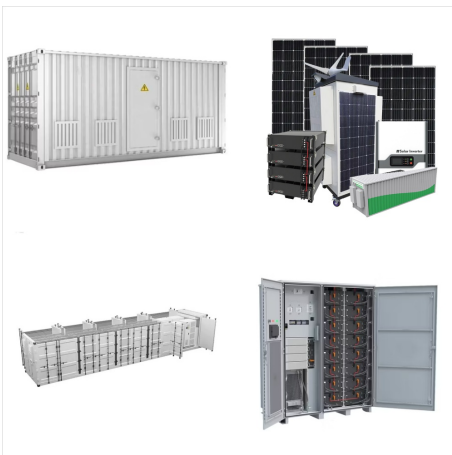


Proper Classification: Lithium-ion batteries must be classified properly based on their type and watt-hour ratings. Different types of lithium-ion batteries have been assigned specific UN numbers. For example, lithium-ion batteries to be shipped alone have UN3480 numbers, and lithium batteries packed with or contained in equipment have UN3481.

DOT APPROVED LITHIUM BATTERY MARK



A major marking/labeling requirement is also included in the IFR that impacts road and rail shipments containing excepted lithium ion cells (??? 20 Wh) and batteries (??? 100 Wh) shipped in accordance with 49 CFR ? 173.185(c). These types of shipments were already required to display the lithium battery mark, but now they must also display

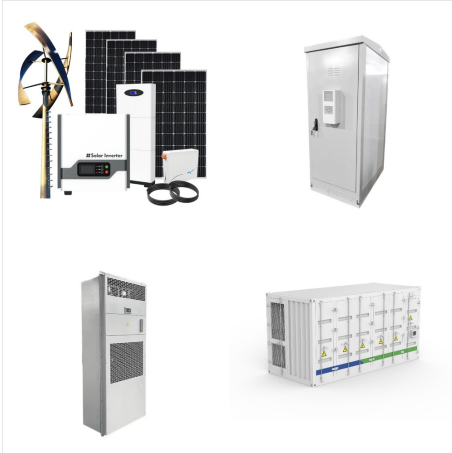


The DOT shipping lithium batteries by ground certification gives your employees the necessary training to pack, mark, and label lithium battery products. PROGRAM CATALOG. Training. Consulting. About. Contact. 800-949-4834. dgtraining . 800-949-4834. Login. 800-949-4834. Program Catalog Online Training.



Mailers may use a DOT-approved lithium battery handling label, in domestic air or surface transportation, to meet these marking requirements, provided all required elements are included. Documentation. In addition to the marking requirements noted above, mailpieces containing lithium batteries packaged with equipment or mailed without equipment

DOT APPROVED LITHIUM BATTERY MARK



the mark appear on different sides of the mailpiece. See 325.1. b. The mark must be a DOT-approved lithium battery mark, as specified in 49 CFR 173.183(c)(3)(i) and Exhibit 325.2a. c. The mark must include a telephone number for those who need to obtain additional information. d. Lithium metal cells or batteries must be marked with UN3090. e.



Figure 1 ??? Lithium Battery Handling Mark. This single mark would identify packages of small lithium batteries to handlers, carriers and emergency responders. The graphic of the burning batteries identifies that the batteries are highly flammable (in the wrong circumstances).



As 2019 quickly approaches, lithium battery shippers need to be aware of the mandatory label changes that become effective on January 1 st. For almost 2 years shippers of small (excepted) batteries and battery-powered devices have had the option to use either the lithium battery handling "Caution" label or the lithium battery mark while operating under the ???

DOT APPROVED LITHIUM BATTERY MARK



This compliance resource was prepared to assist shippers to safely package lithium cells and batteries for transport by all modes according to the latest (December 27, 2022; HM-260B) regulatory requirements. U.S. DEPARTMENT OF TRANSPORTATION. Pipeline and Hazardous Materials Safety Administration. 1200 NEW JERSEY AVENUE, SE ???



Except for mailpieces containing button cell batteries installed in equipment (including circuit boards), or no more than 4 lithium metal cells or 2 lithium metal batteries installed in the equipment they operate, mailpieces containing lithium metal batteries must bear a DOT-approved lithium battery mark, as specified in 49 CFR 173.185(c)(3)(i)



The Class 9 ??? Lithium Battery label* The lithium battery mark; If a battery is shipped on a non-IATA aircraft, then the DOT Section II equivalent (49CFR173.185(c)(4) is still a valid exception that can be used when shipping standalone lithium ion or lithium metal/primary cells/batteries.

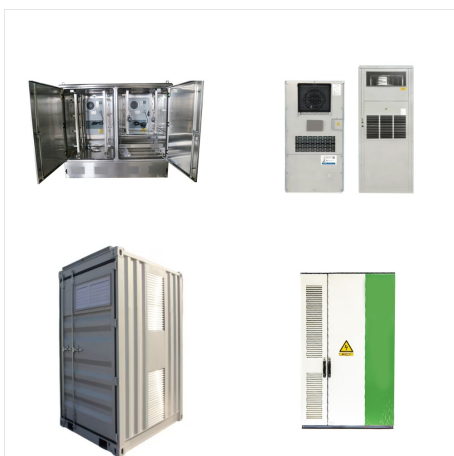
DOT APPROVED LITHIUM BATTERY MARK



Help stay in compliance and ensure the safe transport of your lithium ion battery shipments with these DOT Lithium Ion Battery Markings. Effective March 6, 2019, these labels can help meet the DOT PHMSA Interim Final Rule harmonizing the 49 CFR with the ICAO Technical Instructions for the Safe Transport of Dangerous Goods by Air.



The lithium battery mark is required as specified in the DGR. The border of the mark must have red diagonal hatchings with a minimum width of 5mm. The symbol (group of batteries, one damaged and emitting flame, above the UN number for lithium ion or lithium metal batteries or cells) must be black on white or a suitable contrasting background



Lithium metal batteries packed with equipment 9 UN3091 N/A Batteries, wet, nonspillable 8 UN2800 N/A Batteries, dry, sealed, n.o.s. See Special Provision 130 7. SAFETY CONTROL MEASURES:
a. OPERATIONAL CONTROLS: (1) Damaged, defective, recalled lithium cells and batteries, and lithium cells or batteries, contained

DOT APPROVED LITHIUM BATTERY MARK



To drive consistency in marking requirements in the various modes of transportation, the Postal Service stated its intention to require Department of Transportation (DOT)-approved lithium battery marks when these marks are required or optionally applied. to permit shippers adequate time to transition to the new lithium battery mark and



While most lithium batteries are safe, some have overheated and caught fire. Once ignited, they can cause any nearby batteries to overheat and catch fire. These fires can be difficult to put out and produce toxic and irritating fumes. Identify the presence of lithium batteries inside of a package. When shipping lithium batteries, it is not always

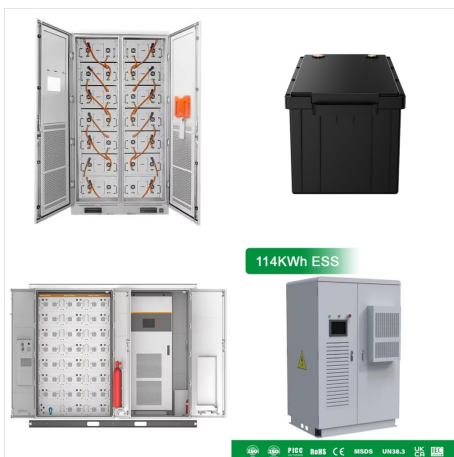


bear, lithium battery markings under Publication 52, sections 349.221a(6) and 349.222a(6), and limit markings to DOT-approved lithium battery marks. Require a separate "prohibited on passenger air-craft" text marking, in addition to a DOT-approved lithium battery mark, for mailpieces containing UN3480 and UN3090 batteries.

DOT APPROVED LITHIUM BATTERY MARK



The mark must be a DOT-approved lithium battery mark, as specified in 49 CFR 173.183(c)(3)(i) and Exhibit 325.2a. c. The mark must include a telephone number for those who need to obtain additional information. d. Lithium metal cells or batteries must be marked with UN3090. e. Lithium metal cells or batteries installed in or packed with the



Lithium metal batteries will use labels with one of the following UN numbers: UN3090 UN3091; If you're shipping lithium metal batteries as a standalone (no other items in the package), use a battery label with UN3090. If you're shipping lithium metal batteries contained in or packed with equipment, use a battery label with UN3091.

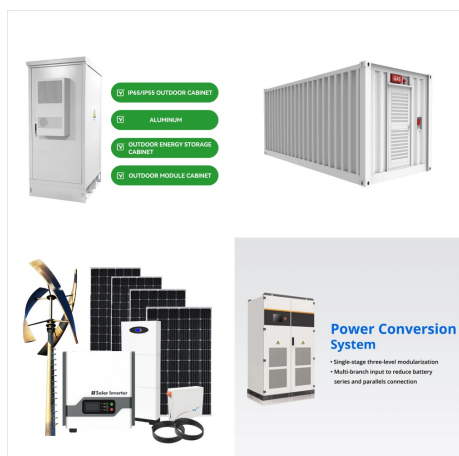


On March 6, 2019 the Department of Transportation Pipeline and Hazardous Materials Safety Administration released an Interim Final Rule (IFR) on enhanced safety provisions for transporting lithium batteries. The rule added additional marking and labeling requirements for lithium battery shipments transported by road, rail and air.

DOT APPROVED LITHIUM BATTERY MARK



Policies, Procedures, and Forms Updates Manuals
DMM Reminder: New Mailing Standards for Lithium Batteries. On August 17, 2017, the Postal Service ??? revised Publication 52, Hazardous, Restricted, and Perishable Mail, to provide new mailing standards for mailpieces containing lithium batteries. The Postal Service detailed these revisions in Postal Bulletin 22474 (8-17-17, ???



9E Lithium Metal and Lithium-ion Cells and Batteries International and APO/FPO/DPO; 10A Small Quantity Provision; 10B - Excepted Quantity Provision; 10C - Cremated Remains; Each mailpiece must bear a DOT-approved excepted quantity marking, shown in Exhibit 325.4, under the following conditions:



Do you need to ship lithium batteries or devices containing them???like a laptop, cell phone, even a vape or e-cigarette? Most consumer electronics contain smaller batteries???batteries that do not exceed 100 Wh for lithium ion batteries or 2g of lithium content for lithium metal batteries. If this information isn't marked on the battery itself,

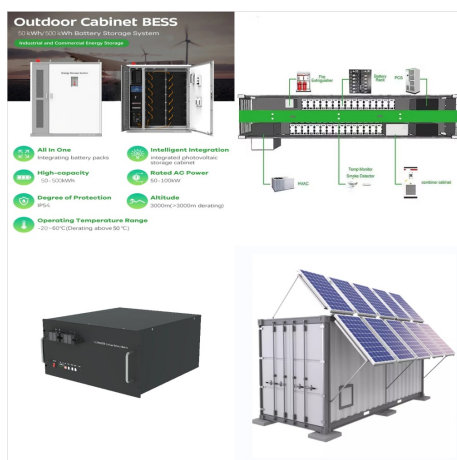
DOT APPROVED LITHIUM BATTERY MARK



When shipping lithium batteries, businesses must comply with U.S. Department of Transportation (DOT) standards and Pipeline and Hazardous Materials Safety Administration (PHMSA) standards for preparing shipments ???



For non-installed batteries, your package must have a DOT-approved lithium battery mark (UN3090) Standards for Shipping Installed Batteries. Installed batteries must be protected from short circuit; Devices with batteries must have protection to prevent accidentally being powered-on;



(A) The mark must be in the form of a rectangle or a square with hatched edging. The mark must be not less than 100 mm (3.9 inches) wide by 100 mm (3.9 inches) high, and the minimum width of the hatching must be 5 mm (0.2 inches), except marks of 100 mm (3.9 inches) wide by 70 mm (2.8 inches) high may be used on a package containing lithium batteries when the package is ???

DOT APPROVED LITHIUM BATTERY MARK



The 64th Edition (2023) of the IATA DGR includes the following updates related to air shipments of Lithium Batteries: Lithium Battery Mark. The requirement to include a telephone number on the Lithium Battery Mark (IATA 7.1.5.5, Figure 7.1.C) has been eliminated. The Lithium Battery Mark may include the telephone number until 31-December-2026



Lithium metal batteries will use labels with one of the following UN numbers: UN3090 UN3091; If you're shipping lithium metal batteries as a standalone (no other items in the package), use a battery label with UN3090. ???



Proposed Revisions to USPS Mailing Standards: Require DOT-approved lithium battery handling mark: Currently Publication 52 requires certain packages of lithium batteries to either display what is known as the Lithium Battery Handling Label or to be marked with the same information as required by the label but without meeting the specifications for the label's color and size.