

What is energy storage multiblock draconic evolution?

The Energy Storage Multiblock is a multiblock power generation structure added by the mod Draconic Evolution. It uses Draconium and Redstone blocks power to store immense amounts of Redstone Flux, up to 2.14 TRF (unlimited in new versions of the mod).

What is draconic evolution energy core?

The Energy Core is a machine added by Draconic Evolution energy storage system. It is the central part of the Energy Core multiblock which can store massive amounts of Redstone Flux (RF). This...

Is draconic evolution a good mod?

I'm quite new to the modded minecraft world. Draconic evolution is one of the mods that caught my attention right from the beginning. I got the setup to get good amounts of draconium ingots in my SF3 world, but my problem is the insane amounts of energy it requires for everything.



Draconic Evolution provides a unique twist on storing energy. The Draconic Energy Core consists of a central "orb" and a number of Energy Core Stabilizers positioned around the core. Energy Pylons are used to transfer power in and out of the Energy Core. There are eight tiers, each providing a greater amount of storage, and each requiring a greater amount of materials to ???

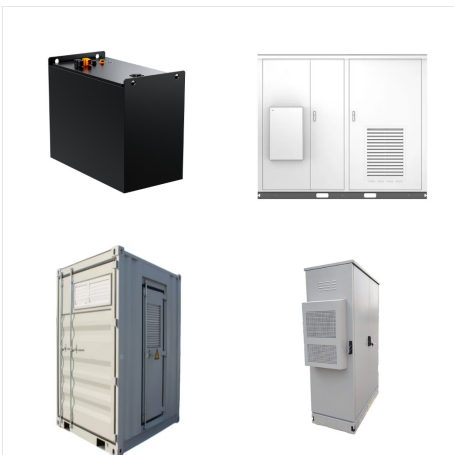
DRACONIC EVOLUTION ENERGY STORAGE TIER 7



Description Base information. Minecraft version: 1.7.10; Minecraft Forge version:10.13.4.1614; Draconic Evolution version: 1.0.2d; Mod List or Mod Pack (include version)

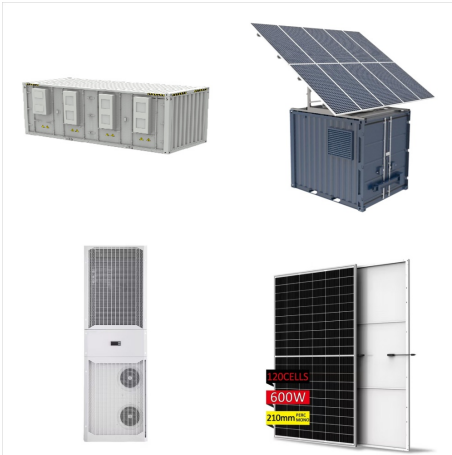


Energy Core is a block added by the Draconic Evolution mod. The Energy core can be upgraded a total of 7 times as there are a total of 8-tiers of energy storage. This block can store more energy than any other energy storage device from any other mod. Tier 7 Tier 8 Redstone: 0 : 0 : 0 : 26 : 80 : 178 : 328 : 0 Draconium: 0 : 6 : 26 : 54

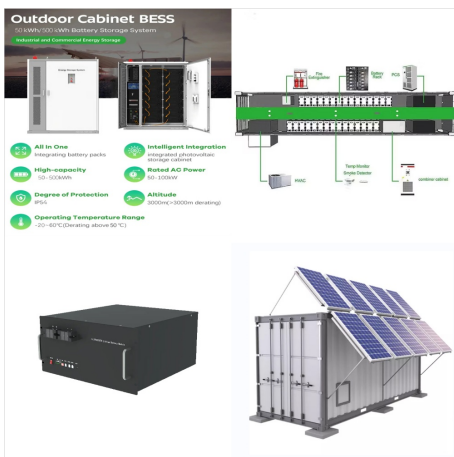


[Draconic evolution] [Infinity 1.7] Tier 5 energy storage is wrong I tried crafting the tier 5 energy storage for over an hour. After just about giving up and trying to build it one more time, I built it incorrectly, and it worked.

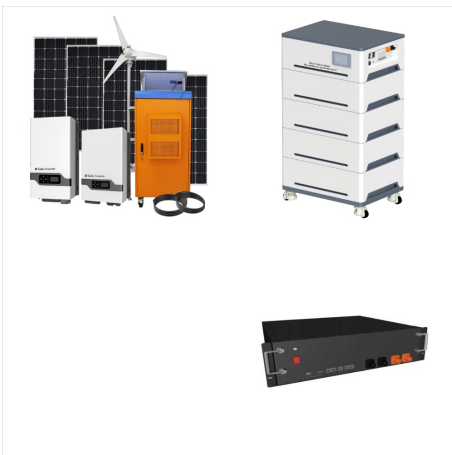
DRACONIC EVOLUTION ENERGY STORAGE TIER 7



With Draconic Evolution, you can make powerful armor, bows, energy storage, teleportation, and more. The mod also adds the chaos guardian (or chaos chicken, depending on your mod pack), which is a much harder version of the ender dragon. Draconic Evolution is a common addition to many modpacks, including Stoneblock 2 and Sky Factory 3. Since



Schematic files for modded Minecraft that can be used with Schematica and WorldEdit. - modded-schematics/Draconic Evolution/[Draconic Evolution] Energy Core Tier 7.schematic at master · eddoww/modded-schematics



You literally built it, placed a few creative energy cells, and afk'd until it was done. Reply reply [deleted] ??? Never in the post did he say it was hard i somehow filled the tier 8 draconic storage within a second in survival on a public server with no creative items at all ._.

DRACONIC EVOLUTION ENERGY STORAGE TIER 7



Generator is a block added by the Draconic Evolution mod. It is able to convert regular Furnace fuels such as Coal or Wood Planks to Redstone Flux energy. It generates energy at a rate of 90RF/t. The block also features an internal buffer of 100,000RF where power it generates is stored if it has nowhere else to go.



The best analogy for the Draconic Reactor is the Nuclear Reactor from IndustrialCraft 2 (IC2). It doesn't have the complexities that IC2's Reactor has, but it's a lot more dangerous and can put out insane amounts of Redstone Flux ???



I have 1 tier 6 storage, and 1 tier 7 (from here on will be call 6 & 7). The two storage's are 4 chunks (diagonal) apart. 7 is my main, it is the one I feed my base from. 6 is in the ceiling of my power room. Draconic-Inc / Draconic-Evolution Public. Notifications You must be signed in to change notification settings; Draconic Energy

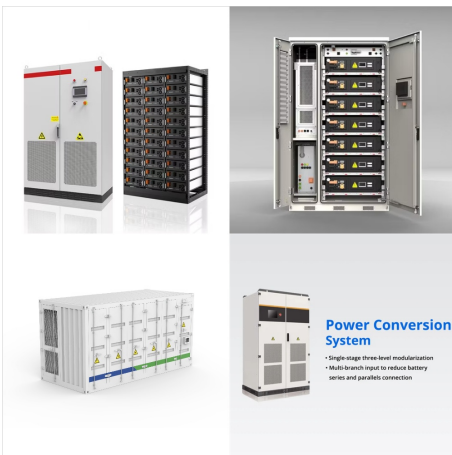
DRACONIC EVOLUTION ENERGY STORAGE TIER 7



Draconic Evolution is a mod that introduces high powered and efficient weapons, tools, armour, machinery, storage units, rituals, research and more. All items and blocks of the mod are highly dependent on Draconium Ore (which generates within the Overworld and Nether, but most commonly in The End) as well as Redstone Flux for energy. Many items come in two or more ???



I haven't used the Draconic energy core yet, but I'm a little hesitant on building one because I'm playing on a public server with no way to rollback. I realize this is only an energy storage multiblock, but after my experience with IC2 nuclear reactors I better be safe than sorry.



Tier 8 draconic evolution energy core, done in survival on my server. I have the materials for it. 10 tier 6 ET solars will do 1.7 billion a tick, and I could do that lol. But whyyyyyyy!! . Reply cconeus ??? Additional comment actions. I guess that's the only point in making an infinite storage to begin with haha. I really wanted to fill

DRACONIC EVOLUTION ENERGY STORAGE TIER 7



Draconic Evolution is a mod created by brandon3055 originally for the TolkienCraft modpack by GreatOrator. It adds new powerful tools, machines, and items. The mod's content is based around its ore block, Draconium Ore. This mod uses the Redstone Flux API for its energy systems. The mod adds rituals, research, and in-game documentation. Draconic Evolution has often been ???



?????Draconic Evolution?????(R)????????????<??(R)?? 1/4
 ??????????(R)????????????????????????????????
 ???<??(R)?? 1/4
 ?????????????????????<??(R)?? 1/4
 ?????????????<????(R)????????????????????
 ??????
 ?????????Tier????????????????????Assemble ???

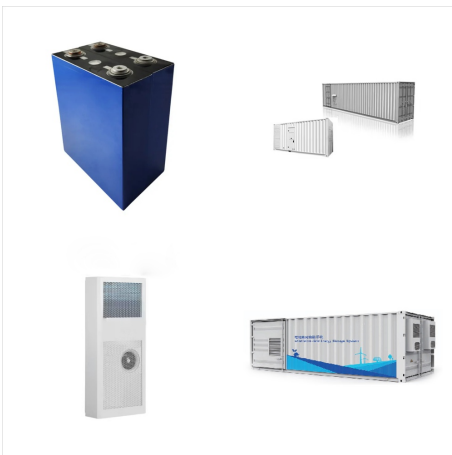


Draconic Evolution??<????????? [| ?? 1/2 ?? 1/4
 ??????]. ?????????????????? 1/4
 ??<??>????????????<????????-????????(R)?
 ?>>??>????????????????????????????????(R)??
 ?????????????????????????????????
 ?????????MOD???

DRACONIC EVOLUTION ENERGY STORAGE TIER 7



Energy Pylon is a block added by the Draconic Evolution mod. When placed down near a Energy Storage Multiblock structure with a block of Glass on top of it, it allows RF to be either pumped in or out of the structure. Right clicking it allow to toggle between input and output mode. The block of Glass which converts into a sphere has to be at the same altitude as energy storage or lower.



High tier energy storage (RF) And much more with new features being added in each update. This description really needs a massive overhaul but at this point, I'm pretty sure most of you know what DE is all about. If you're new here then just search for Draconic Evolution on google or and you will find everything you need to know.



The Energy Pylon is a block added by Draconic Evolution. It is used to transport energy in and out of Energy Cores. A block of Glass must be placed on top of it to make it properly function. The direction of energy can be observed by the particle effects of the translucent sphere: if they are moving inwards then it will take energy out of an Energy Core, while energy will move into the ???

DRACONIC EVOLUTION ENERGY STORAGE TIER 7



Draconic Evolution is a mod that adds some extremely expensive high tier items to the game. 77,337,021; Description. This is a mod that adds a lot of high-tier items such as tools and armor as well as some high-tier energy storage and a lot of other random features such as: Teleportation; mob farming (spawning+killing) player detection