



High tier energy storage (RF) And much more with new features being added in each update. This description really needs a massive overhaul but at this point, I'm pretty sure most of you know what DE is all about. If you're new here then just search for Draconic Evolution on google or and you will find everything you need to know.



Draconic Evolution provides a unique twist on storing energy. The Draconic Energy Core consists of a central "orb" and a number of Energy Core Stabilizers positioned around the core. Energy Pylons are used to transfer power in and out of the Energy Core. ???



The only way to get the storage increasing again is to break the incoming power pylon and replace it (I need only break and replace the glass on top), after that it works fine until I go to another dimension or log off, at which point it breaks again. all chunks are loaded and I had no issues with the Tier 7

DRACONIC EVOLUTION ENERGY STORAGE TIER 8 PAPUA NEW GUINEA



uhm i somehow filled the tier 8 draconic storage within a second in survival on a public server with no creative items at all ._. I was starting to import the first bit of energy into the core with a mekanism entangluporter and some cryo stabilized fluxducts and then the core interface went crazy and then the core was just full.



Main article: Energy Core (Draconic Evolution) For technical reasons the template to build the tier 8 Energy Core is on this separate page. The structure is 13x13x13 (not counting the Stabilizers) and requires (on top of the Core): 36 Energy Core Stabilizers; 786 Draconium Blocks; 378 Awakened Draconium Blocks



The easiest solution is an eternal Frame, which just makes the bees immortal. Energy generation does not count as "product", but as an "effect"! The next step: Harvesting this energy. The easiest way is to just place the alveary above ???

DRACONIC EVOLUTION ENERGY STORAGE TIER 8 PAPUA NEW GUINEA



I haven't used the Draconic energy core yet, but I'm a little hesitant on building one because I'm playing on a public server with no way to rollback. I realize this is only an energy storage multiblock, but after my experience with IC2 nuclear reactors I better be safe than sorry.



uhm i somehow filled the tier 8 draconic storage within a second in survival on a public server with no creative items at all ._. I was starting to import the first bit of energy into the core with a mekanism entangluporter and some cryo stabilized ???

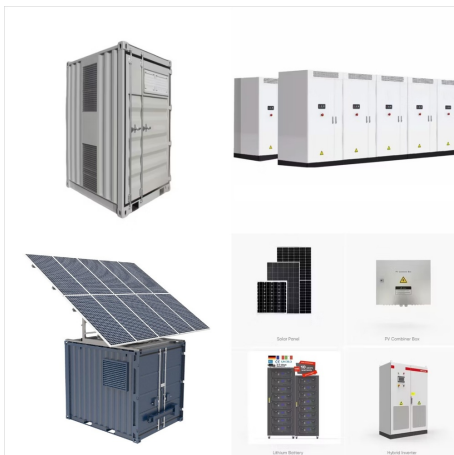


Description I've just setup a Tier 7 energy core for storing my solar energy, and after reaching 0.01% (2.147B) RF, it stopped charging, even though it's consuming the energy. Flux Networks incorrectly detecting limits with Draconic Evolution. SonarSonic/Flux-Networks#153. Closed Energy Storage Core can only store INT_MAX rf at most. #953.

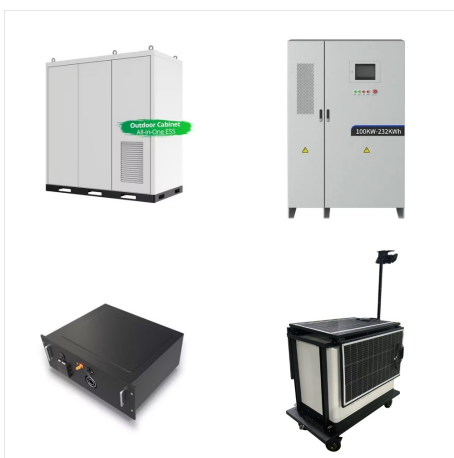
DRACONIC EVOLUTION ENERGY STORAGE TIER 8 PAPUA NEW GUINEA



The easiest solution is an eternal Frame, which just makes the bees immortal. Energy generation does not count as "product", but as an "effect"! The next step: Harvesting this energy. The easiest way is to just place the alveary above your Tier 8 core and use an energy pylon on the bottom alveary side.



High tier energy storage (RF) And much more with new features being added in each update. This description really needs a massive overhaul but at this point, I'm pretty sure most of you know what DE is all about. If you're new here then just search for Draconic Evolution on google or and you will find everything you need to know.



The Energy Core is a machine added by Draconic Evolution energy storage system. It is the central part of the Energy Core multiblock which can store massive amounts of Redstone Flux (RF). This structure comes in 8 tiers.

DRACONIC EVOLUTION ENERGY STORAGE TIER 8 PAPUA NEW GUINEA



Draconic Evolution Energy Storage Build. imgur. comments sorted by Best Top New Controversial Q&A Add a Comment. secdeath My current plan has 8 tier 7's stacked up on top of each other, so I may take from your ideas for hiding the particle generators. Reply



I upgraded my Tier 7 energy storage to a Tier 8 when I filled up the Tier 7. Draconic-Inc / Draconic-Evolution Public. Notifications Fork 157; Star 309. Code; Issues 24; New issue Have a question about this project? Sign up for a free GitHub account to open an issue and contact its maintainers and the community. Pick a username Email