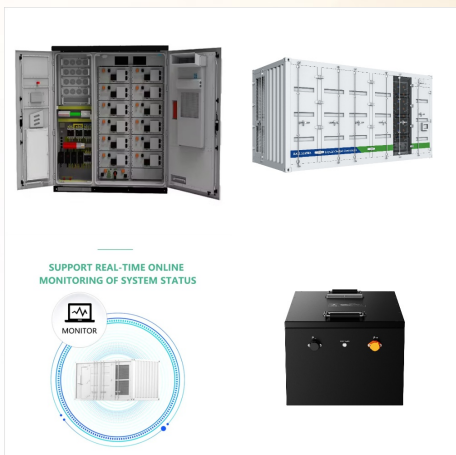




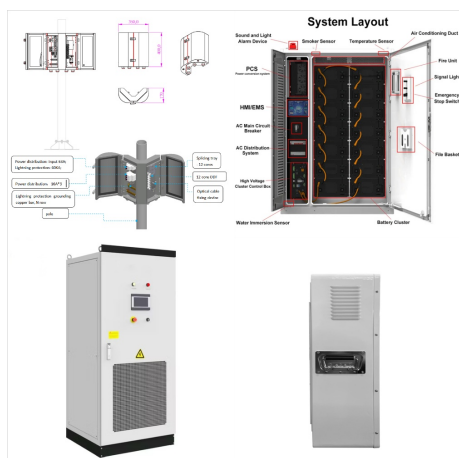
This report contains the latest information available on drug use and health-related problems in Ireland, with data drawn principally from the following sources: Drug prevalence survey of households in Ireland and Northern Ireland, first administered in 2002/3, has been repeated at 4-yearly intervals, in 2006/7, 2010/11, 2014/15 and 2019/2020.



How long do drugs stay in your system? Drug emergencies; Drug Combinations "Mixing Drugs" Chemsex; Harm Reduction; For parents / carers. Talk to your child about drugs New EU Web Survey on drugs will capture drug use trends and inform harm reduction needs in Ireland; 22nd May 2024 New EU Web Survey on drugs will capture drug use trends and



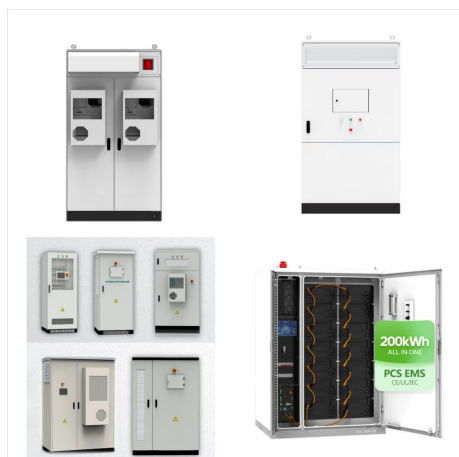
system monitoringu wyposażony w intuicyjny wyświetlacz dotykowy HMI Control Panel pokazujący wszystkie parametry pracy systemu DRUPS. Bazując na jednostkach serii mtu moA 1/4 na zaprojektować system zasilania gwarantowanego niskiego lub średniego napięcia we wszystkich konfiguracjach wymaganych przez Uptime Institute dot. poziomów TIER: N



Control System a?? With a simple HMI this links the major UPS components and can be integrated into the facilities BMS; Rotabloc Control System Integration a?? Software integration that allows the elements of the system to perform as a a?|



How DRUPS work by Saied April 18, 2019 January 5, 2020 The dynamic rotary uninterruptible power supply (DRUPS) unit including engine & rotary UPS, which depend on kinetic energy stored in flywheel to eliminate the need for batteries, which lead to batteries space saving & OPEX saving since DRUPS room doesn't require to be air conditioned.



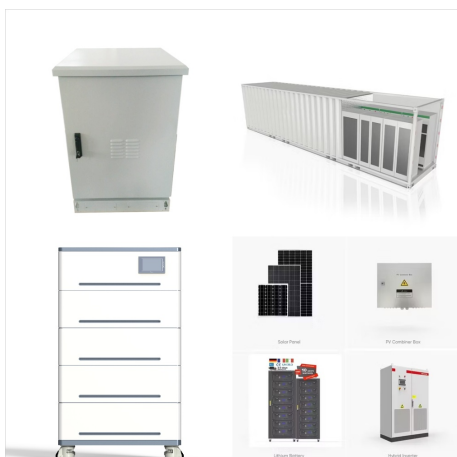
The Hitzinger DRUPS system comprises of four major components: diesel engine, generator, kinetic energy storage module and coupling choke. The kinetic energy module, generator and coupling choke work together to provide power conditioning and ride through energy for the UPS system, whilst the diesel engine provides the long-term back up for a



Unlike traditional UPS systems that rely solely on batteries, DRUPS, or Diesel Rotary Uninterruptible Power Supply, combines the reliability of diesel generators with the instantaneous response of a flywheel energy a?]



Experience the future of power resilience with KINOLT KS(R) DRUPS (Diesel Rotary Uninterruptible Power Supply). Our product page unveils the advanced kinetic energy accumulator, seamlessly blending an outer rotor, inner rotor, and dual windings. Achieve peak performance at 1500 rpm (50 Hz) or 1800 rpm (60 Hz). Elevate your power infrastructure with a?]



This system, (which uses eight DRUPS units to generate 15MW of power) has been active more than six years with no failures," Morgan says. Limited lifespan is a concern with any system. "If inheriting a DRUPS, know how old the bearings are, the start cycle count, and run hours," Panfil says. "Also look at the mechanical locking.



Established in 1989, EURO-DIESEL has led the industry with its expertise in power products and Standby Generating sets, delivering an unparalleled Diesel Rotary Uninterruptible Power Supply system (DRUPS) known as NO-BREAK KS(R). The advanced DRUPS system provides seamless and limitless power and revolutionizes Grid Supply Power Conditioning.



For organizations prioritizing sustainability, DRUPS offers a more eco-conscious choice, contributing to lower carbon footprints and reduced operational costs. Space and Modularity. DRUPS systems are known for a compact design, often requiring less space than a separate diesel generator and UPS system at the same power/capacity.



equipped with a DRUPS system to secure the power supply to the tunnel's control room, lighting, ventilation, fire alarm or other operation and safety devices that are required in a tunnel infrastructure. The HVAC loads generate high inrush currents that can be safely provided by a NO-BREAK KS(R) system. Due to its resilient design and specifically



Published in June 2023, the latest report from the National Drug Treatment Reporting System (NDTRS) presents data on treated problem drug use (excluding alcohol) for the year 2022, followed by trends for the seven-year period from 2016 to 2022.1. Key findings, 2022



Control System a?? With a simple HMI this links the major UPS components and can be integrated into the facilities BMS; Rotabloc Control System Integration a?? Software integration that allows the elements of the system to perform as a single effective unit ; With full integration and comprehensive system testing in the factory the benefits



The NBDD Flywheel based UPS is a Diesel UPS or Rotary Diesel UPS system that provides mission critical support for industrial applications. The Rotary Diesel UPS (DRUPS) system uses a flywheel for kinetic energy and provides guaranteed tolerances frequency to meet your exact a?|



IEM Power Systems" fully Integrated DRUPS systems comprises: Rotabloc a?? UPS Energy Storage Unit 400 - 2000kVA (320 - 1600kW) (systems up to 50MW+) Switchgear a?? Low and Medium voltage input and output switchgear; Engine a?|



The DRUPS (Diesel Rotary UPS System) is the perfect solution for mission critical applications, with the models specifically designed to suit IT grade power requirements, and models perfect for industrial and mechanical loads. The a?|



Om ruimte voor de DRUPS-installatie te maken is in het voorjaar van 2018 de bestaande STEG-installatie verwijderd (Stoom en Gas centrale). Door BlueTerra is een werkomschrijving voor de demontage opgesteld en de uitvoeringsbegeleiding gedaan. Op dit moment loopt de Europese Aanbesteding van de DRUPS-installatie.



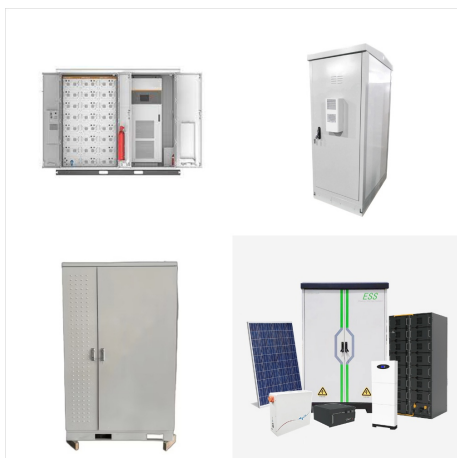
The introduction of Garda roadside drug testing begins on 13 April 2017 and Ireland's new drug driving laws take a zero-tolerance approach to certain drugs. Previous drug driving testing. Driving under the influence of drugs has been a?]



At the core of DRUPS lies a hybrid power generation system that combines the reliability of diesel generators with the instantaneous response of a flywheel energy storage system. This hybrid setup allows DRUPS to deliver uninterrupted power to critical loads, bridging the gap between utility power failures and backup power activation.



Health care in Ireland is delivered through public and private healthcare. The public health care system is governed by the Health Act 2004, [1] which established a new body to be responsible for providing health and personal social services to everyone living in Ireland a?? the Health Service Executive. The new national health service came into being officially on 1 January 2005; a?]



In this Q&A, Robert and Phil Thoburn discuss the DDRUPS system alongside the types of business and industries where installation can be highly beneficial compared to other UPS systems.

Transcript. Rob: Hello, my name is Robert Thoburn of Forsspac, today I'll be talking to my brother Phil who is our Technical Director. Rob: What does DDRUPS stand for? Phil: a?



Compared to DRUPS, today's static UPS boast higher efficiencies, occupy less space, weight, and are far more scalable. While they may be the right choice for today's data centre power protection needs, a?



Ephedrine is a central nervous system stimulant ("upper"). It is used to treat breathing problems and nasal congestion. The HSE and Union of Students in Ireland (USI) ask students to think about drug safety measures when using club drugs. Harm reduction messages from the #SaferStudentNights campaign. Poll



Opioids encompass naturally occurring opium poppy derivatives, such as morphine and codeine, and semi-synthetic opiates like heroin and methadone. They are classed as narcotic analgesics - meaning they decrease pain reaction and sensation. Opioids can produce intense euphoria in a person and a sense of well-being.



The introduction of Garda roadside drug testing begins on 13 April 2017 and Ireland's new drug driving laws take a zero-tolerance approach to certain drugs. Previous drug driving testing. Driving under the influence of drugs has been an offence in Ireland since 1961.



The main advantages of DRUPS equipment compared to battery-powered UPS combined with a diesel-generator are the higher overall system energy efficiency, smaller footprint, use of fewer components, longer technical lifetime (no use of power electronics) and the fact it does not result in chemical waste (no use of batteries).



DRUPS. TCE in one of the IT building project, adopted an alternate type of UPS ie DIESEL ROTARY UNINTERRUPTIBLE POWER SUPPLY SYSTEM (DRUPS) Diesel rotary uninterruptible power supply system (DRUPS) combines the a?|



The DRUPS (Diesel Rotary UPS System) is the perfect solution for mission critical applications, with the models specifically designed to suit IT grade power requirements, and models perfect for industrial and mechanical loads. The Rotary Diesel UPS system is made up from four major components, including the Diesel Engine, Electromagnetic Clutch