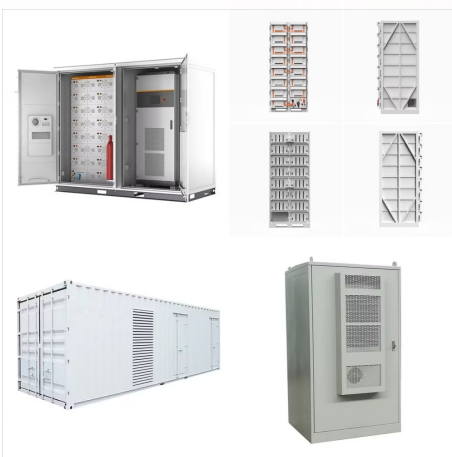




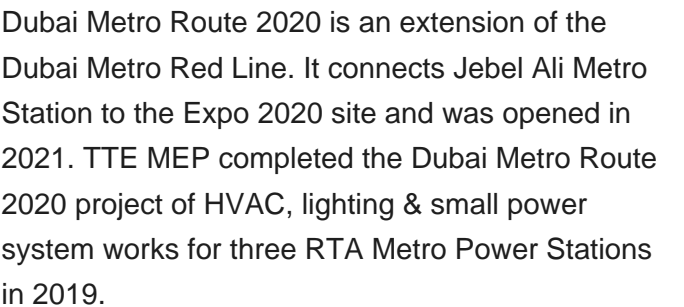
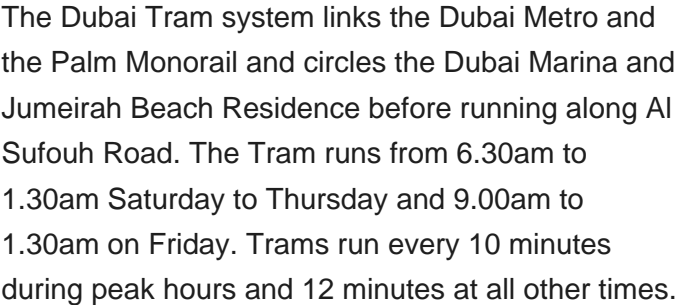
As part of the Consortium, Alstom was responsible for the integration of the entire metro system including 50 Metropolis trainsets produced in Alstom's site in Katowice, Poland, power supply, communication, signalling, automatic ticket control, track works, platform screen doors and a three-year warranty on the whole system, as well as the



Dubai, United Arab Emirates September 2009 - September 2021. Serco successfully launched Dubai Metro in 2009 in partnership with Roads and Transport Authority (RTA). Located in the United Arab Emirates (UAE), the Dubai Metro is the Arabian Peninsula's first urban rail transit system and the world's longest fully automatic driverless train



Electrical appliances and devices made for the United States, Canada, and South American countries will need a transformer and plug socket adapter for use Dubai and the UAE (unless they are dual voltage appliances ??? see below). Dubai and UAE Plugs. In Dubai and the UAE the plugs are UK-style Type G. Type G plugs have 3 flat prongs.





The Dubai Metro by architect Aedas Architectos was built in Dubai, United Arab Emirates in 2005-2010. It is 22km L?nea Roja-52km L?nea Verde long, The fully automated metro system, has added a third rail that provides power if they fail the other two tracks. The Red Line of Dubai Metro has two power stations, one in Al Rashidiya and



Railway system overview The Dubai Metro rail network consists of two lines, which were delivered by DURL in two phases. The first phase scheduled for delivery was the 52.1 km Red Line, which runs from Dubai The traction power feeding system uses a third rail powered at 750 V DC. The Dubai Electricity and Water Authority provides high



This system has been used in the metros of UK, New York, Singapore, Paris, Beijing, Kolkata, Bangalore, Dubai etc. Mainly DC traction voltage was being used earlier, but with advancement in technologies, many metros have adopted 25kV AC system recently. 25kV AC is used in Delhi, Chennai, Jaipur, Hyderabad, Seoul, Paris and Hongkong.



One of the biggest planned project in Dubai is the Dubai Metro Blue Line, one of the new extensions of the transportation system developed for the long-term prospective of Dubai. The line will be a 30 km one and the expansion will include an additional 14 stations which will link most of the urban and industrial precincts such as Dubai Creek



We will continue to keep the Dubai Metro map updated with station name changes and any additional stations that may open once the metro gets extended further out. Station name changes happen occasionally due to companies purchasing the branding rights for a particular station, you can read about any changes in the news section.



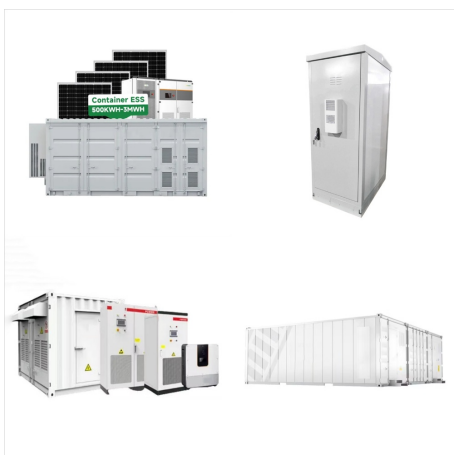
The Dubai Metro is the world's largest automatic public transportation system; - The power supply voltage of the electric trains is 750 volts. Fortunately, it is impossible to fall on the rails and touch the contact rail, because the tracks are separated by a ???



Since its public launch on 9 September 2009, the number of riders that have used the Dubai Metro network has exceeded 2 billion, according to the RTA. The Red Line has transported 1.342 billion commuters, while the Green Line has served 673.531 million passengers. In 2022, the average daily number of riders on Dubai Metro exceeded 616,000.



Dubai Metro has begun its transition into a solar-powered mode of transport. The Roads and Transport Authority (RTA) has started to install solar energy panels at Jebel Ali and Al Qusais as well as the Tram Depot at Al Safouh. The project is expected to be completed early next year and generate 9,959 megawatts of solar power.



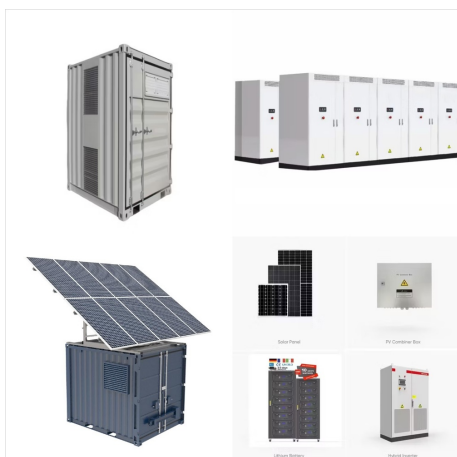
Cable Tray Systems Cable Ladder Systems Cable Trunking Systems Floor Trunking Systems Strut Metal Framing Systems Wire Mesh Cable Basket Systems GRP Cable Management Systems Solar Mounting Systems. PROJECT. HIGHLIGHTS. Dubai Metro Rail Project. Doha Metro Rail Project. Riyadh Metro Rail Project. King Abdul Aziz Airport Jeddah. Shuweihat ???



The Dubai Metro System: A marvel in itself. The Dubai Metro is a true marvel of engineering and innovation, offering a futuristic and seamless transportation experience to the city's residents and visitors. With its sleek trains, state-of-the-art technology, and impressive network of elevated and underground tracks, the metro has transformed



Find out the Dubai Metro schedule, fares, stations, rules and times of last daily trains. Dubai Metro is a state-of-the-art rapid transit system serving Dubai residents since September 9, 2009. Operated by the Roads and Transport Authority (RTA), it offers a safe, reliable, and convenient way for residents and tourists to travel across the



The metro system of Dubai is divided into seven zones spread throughout the city and your fare is determined depending on the number of zones you pass during your trip. The type of ticket you purchase also determines your fare. A single journey ticket can cost anywhere between AED 3 to AED 7.50. As we just mentioned, the fare also depends on



Dubai Metro Map Blue Line. The Dubai Metro Blue Line is a significant expansion to Dubai's metro network, scheduled to begin construction in 2024 and expected to be completed by 2029. Here are detailed features of the future stations and routes:
Length and Stations: The Blue Line will span 30 kilometers with a total of 14 stations. These



Main Stations on the Red Line: Burj Khalifa/Dubai Mall Station: Offers direct access to the world's tallest building and the largest mall. Dubai Marina: Serves the bustling waterfront community, known for its skyscrapers and vibrant nightlife. Deira City Centre: A key station for shopping and business in the heart of old Dubai. Al Rashidiya: The starting point of the Red ???



The Dubai Metro is a driverless, fully automated metro rail network in the city of Dubai, United Arab Emirates. How is Dubai Metro Controlled? Know the Power of Automation. The RTA operates and maintains the Dubai Metro system, including the Red Line and the Green Line, as well as other modes of public transportation in the city, such



The metro construction was a part of Dubai's larger vision under its strategic urban development plan, Dubai Vision 2021. The metro is fully automated, making it one of the few driverless metro systems worldwide. In 2023, Dubai Metro served 260 million passengers, reflecting a 15% increase compared to the previous year.



The document discusses the Dubai Metro system. It provides details about the metro such as its cost of AED28 billion to build, consisting of two lines and 47 stations. It notes the metro aims to strengthen Dubai's infrastructure and position as an economic hub. However, some passengers face issues with technical glitches and a confusing ticket



Dubai has an unmanned metro system that allows you to cross a large part of the city quickly and cheaply. Dubai's sights lie particularly around Sheikh Zayed Road and the metro lines. This is why the metro is the ideal way to explore Dubai. The subways run 7 days a week from early in the morning until midnight. The start time and end time



The Dubai Metro is a driverless, fully automated metro rail network in the city of Dubai, United Arab Emirates. How is Dubai Metro Controlled? Know the Power of Automation. The RTA operates and maintains the Dubai ???



Getting around Dubai is always a breeze, with the Dubai Metro which runs every four minutes during peak times, and the super convenient Dubai RTA buses, with over 2,000 bus stops around the city.. Things could become ???